

2, 3, 4 & 5 AXIS WORKHOLDING

Simple Design

5th Axis Fixtures are manufactured from hardened alloy steel to exacting standards. Our innovative fixtures are lighter, stronger, and more efficient than any traditional vise on the market. With machining access to 5 surfaces of the work piece, parts can be completed in the least number of operations.

Precise Repeatability

The locating pin repeats within .001", meaning parts can be easily located and removed from the fixture without the worry that parts will be relocated in the wrong position.

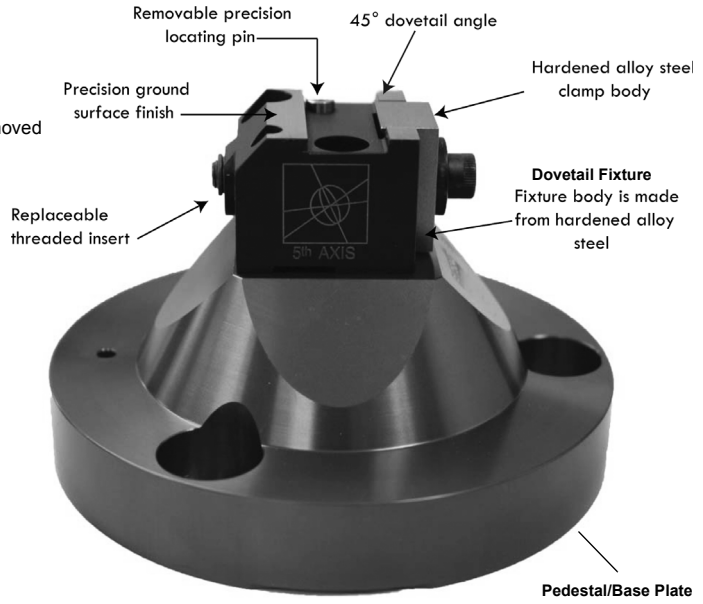
Positive Clamping Force

The 45° gives our fixtures tremendous clamping force, ensuring 1 to 1 positive clamping.

Reduce Material Size and Waste

Our dovetail fixtures hold onto as little as .06" of material. This will reduce your material cost by allowing you to utilize smaller stock sizes and having less material that you need to machine away.

5th AXIS FIXTURES



Innovative Solutions For Your 3, 4, And 5 Axis Machines

Dovetail Fixtures

Length	Width	Height	Stock Size	Part Number	Price Each
1.00	0.70	0.42	.50 to 1.00	5A-D05152WS	\$219.00
1.50	1.00	0.66	1.00 to 3.00	5A-D1151S	\$295.00
2.00	2.00	1.34	2.00 to 4.00	5A-D221M	\$349.00
6.00	3.00	1.94	3.00 and up	5A-D362M	\$495.00

Pedestals and Base Plates

OD	BC	Height	Part Number	Price Each	Number of Screws
4.25	-	2.0	5A-ADPHA5CD115	\$250.00	-
4.95	4.00	1.75	5A-P17534D115	\$249.00	3 - 1/2-13
4.95	7.00	2.50	5A-P2547D221	\$329.00	4 - 1/2-13
2.50	4.00	2.50	5A-P7534D221	\$199.00	3 - 1/2-13



ADPHA5CD115



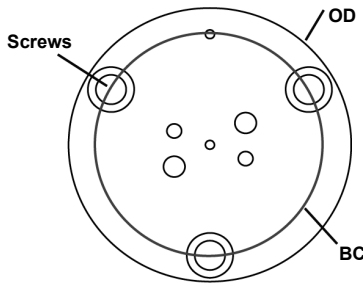
P17534D115



P2547D22



P7534D22



ROUND BAR FIXTURES

The CER40 is a round bar fixture that utilizes an ER40 collet. ER40 collets are available in all sizes and are sold separately. This fixture is the ultimate solution for machining with round stock. Adapter and fixture sold separately.



Round Bar Fixture

Description	Height/OD	Part Number	Price Each
ER 40 Fixture	2.50" Height	5A-CER40	\$295.00
Fixture Base	5.00" OD	5A-P7534CER40	\$199.00

DOVETAIL CUTTER

The DC2253VCMT is a custom indexable cutter that cuts a 45° in your stock. Allow you to replace inserts instead of expensive end mills! Uses standard, V-type inserts.

- Comes with dovetail stock instructions to ensure the stock is prepped correctly
- Includes quality control kit for checking dovetails: Gauge pin set and allen wrench.
- 1" dia shank for set screw, collet, and shrink fit holders.



Dovetail Cutter

Description	Part Number	Price Each
1" Dia, 45° Dovetail Cutter w/ inserts, gauge pin set and allen wrench	5A-DC2253VCMT	\$295.00

Call Us Or Visit Our Website For Our Complete Selection!

5 AXIS WORKHOLDING

DOVELOCK™ DOVETAIL 5 AXIS VISE

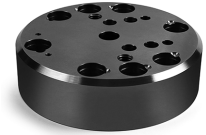
Kurt's DT20 Dovetail 5 Axis Vise is designed for today's aggressive machining needs. Manufactured from 4140 pre-hardened steel, the DoveLock maintains part rigidity and reduces deflection. The DoveLock fits easily into most any machine table with pre-configured hole patterns. An optional riser plate is also available which can be stacked in multiples to achieve the desired clearance from the table.

FEATURES:

- 2.50" tall vise body
- 1.250" thick riser base
- Unique design reduces jaw deflection
- Easy part prep with 0.50" movable jaw stroke
- Movable and stationary jaws are matched pairs
- Lifetime Iron Clad Warranty



Model KURT-DT20



Optional DT20-1 Riser Plate



Dove Lock™ Vise

Jaw Width	Max Jaw Opening	Jaw Height	Clamping Force lbs	Vise Height	Base Height	Base Dia x Height	Overall Stroke	Hex Size	Part Number	Price Each
2.00"	1.668	0.125	up to 4,000	2.50"	1.25"	4.47" x 1.25"	0.500"	0.312	KURT-DT20	\$549.00

Additional Riser Plate

Dia	Height	Weight	Part Number	Price
4.47"	1.250"	5 lbs	KURT-DT20-1	\$137.00

MAXLOCK 5 AXIS ANGLOCK VISE

- Self-centering vise designed for 5-axis machining
- Repeatability within $\pm 0.0002"$
- Reversible, machinable jaws available in aluminum or steel construction
- Users can machine in a step for higher accuracy, eliminating the need for parallels
- Clamp parts on I.D. or O.D.
- Tall jaws provide better spindle clearance
- Flexible mounting options



Optional Riser Kit



Vises

Jaw Width	OAL	Part Number	Price Each
2-1/2"	5.00"	KURT-SCMX250	\$1,465.00
4"	8.00"	KURT-SCMX425	\$1,675.00

Optional Risers

For Use With	Part Number	Price
SCMX250	KURT-SCMX250RK	
SCMX425	KURT-SCMX425RK	

5 AXIS VISE

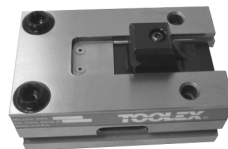
For 5 Axis Applications & Machines With Smaller Work Envelope

- Small footprint (4" x 4" x 6.5") fits most machine pedestal bases
- Clamping pressures to 6,000 lbs.
- Machinable jaws allow maximum part contact – ensuring a rigid, accurate workholding fixture
- Jaws are available in 4140 steel and aluminum
- Vise repeatability = ± 0.0005



Vise Includes 4140 Steel Machinable Jaws And Tool Kit!

Body, Segment & Segment Screw Made From 4140 Hardened Steel For Maximum Rigidity!



Length	Width	Height	Part Number	Price Each
16.000	1.500	4.000	TECO-RWS405X	\$985.00

MAXLOCK MX350 MULTI-AXIS VISE

Specially engineered to hold parts more safely and securely during multi-axis machining by using Kurt's AngLock design to pull the part down. With a 0.625" stroke, this multi-axis vise gives users a wider clamping range before the vise setup must be changed.

The modular design allows for mounting on 2" grid patterns, or, with risers, up to a 100mm grid. Locator bolts are included for quick alignment on 2" grids. When mounted on risers, precision-machined 5/8" holes enable quick alignment using Kurt sine keys. Auxiliary clamping slots for toe clamps allow for even greater mounting flexibility.

- 0.625" stroke allows for a wide range of clamping without changing vise set-up
- Modular design offers a variety of mounting options
- Users can finish machine horizontal surfaces of jaw plates for higher accuracy and to eliminate the need for parallels
- Jaw plates available
- Fully chip-guarded design allows for faster load times and provides smoother operation
- Screw is easy for users to change out, allowing for a broad range of part sizes
- Provides up to 7,000 lbs. of clamping force



Optional Riser



Vise

Jaw Width	Part Number	Price Each
3.50"	KURT-MX350	\$1,780.00

Optional Risers

Slot Width	OAL	Part Number	Price Each
2.95	4.625	KURT-MX350RS	\$782.00
3.97	5.650	KURT-MX350RL	\$865.00

Call Us Today For All Of Your Machine Tool Needs!