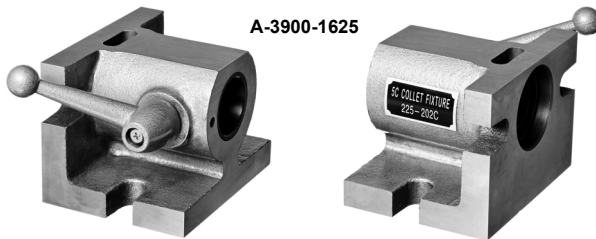
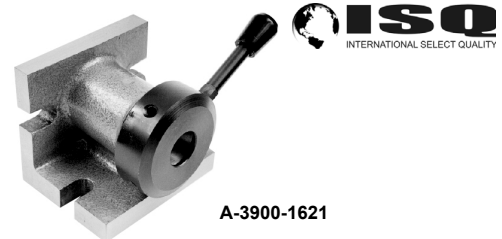


5C FIXTURES/INDEXERS

5C HORIZONTAL & VERTICAL COLLET FIXTURE

- For any standard 5C collet up to 1-1/8"
- Can be used in either horizontal or vertical position
- Lever movement to open or close collet



A-3900-1625

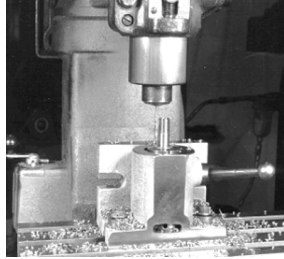
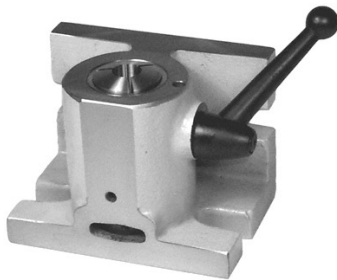
A-3900-1621

Description	Base Size	Height	Part Number	Price Each
5C Hor/Vert Fixture	4-1/4" x 4-1/4"	4-1/4"	A-3900-1621	\$69.00
5C H/V Angle Fixture	5" x 4"	3-3/4"	A-3900-1625	\$80.00

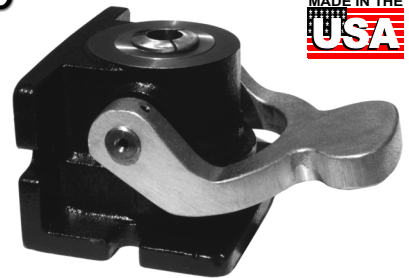
5C COLLET FIXTURE



5C COLLET HOLDING FIXTURE



- Holds 5C collets dead length
- Hardened and ground spindle heavy casting
- Two position-horizontal and vertical
- Lever close
- Made in the USA



Dimensions:
4" H x 6" L x 4.5" W

An indispensable fixture with cam-operated sleeve for opening and closing 5C collets. The collet remains in a fixed position for positive depth control. Spring-loaded handle can be indexed to any desired position for ease of operation while mounted vertically or horizontally.

Size	Cap.	Part Number	Price
5" L x 3-3/4" W x 4" H	1-1/16"	AI-210-5C	\$263.20

Description	Weight	Part Number	Price
Vertical/Horizontal 5C Holding Fixture	18 lbs	KAL-10C	\$295.00

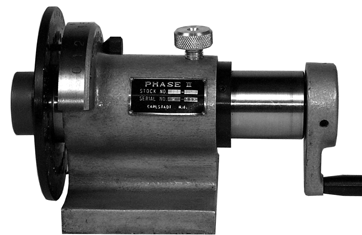
5C INDEXING SPIN JIG FIXTURE

5C SPIN INDEX



- Uses standard 5C collets.
- Indexing fixture for use on milling machines, grinders and inspection equipment
- Hardened and ground spindle
- 0.0004 T.I.R. spindle accuracy
- Direct indexing in ten steps
- Graduated in 5° increments
- Precision ground indexing plate

5C Indexing Spin Jig
Part # A-3900-1604
\$70.00 each



- Hardened and precision ground spindle
- 0.0004" TIR spindle accuracy
- Precision ground 36-position index plate
- Direct indexing in ten steps, graduated in 5° increments
- For use on all milling machines, surface grinders and inspection equipment
- Approximate weight: 18 lbs

5C Spin Index
Part # PH2-225-204
\$95.00 each



5C HORIZONTAL / VERTICAL COLLET INDEX

- For use with 5C collets
- Patented single lever action activates the indexing mechanism
- Precision ground index plate has 24 indexing locations in 15° increments, any of which can be masked for greater versatility
- Spindle accuracy 0.0004"
- Approximate weight: 35 lbs
- Spindle is 2-1/4-8TPI

Optional Tailstock:
• Center Height: Min. 3", Max. 4-1/2"
• Tilt angle: =+/- 11°

Specifications	Max. Variation
Dividing spindle concentricity	0.0004"
Cylinder center bore (per 1") concentricity	0.0004"
Lateral offset of center slot of dividing spindle	0.0004"
Center slot to dividing spindle concentricity	0.0004"
Spindle Center Line parallelism	0.0004"
Base to face squareness	0.0004"



5C Horizontal/Vertical Collet Index
Part # PH2-225-205
\$349.00 each



Optional Tailstock
Part # PH2-240-003
\$165.00 each



Call Us Today For All Of Your Machine Tool Needs!