

CHUCK JAWS- Quick Jaw Change Style

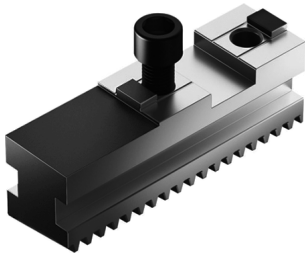
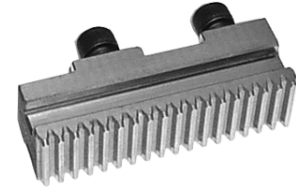
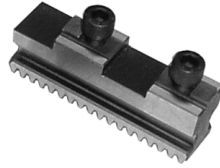
JAWS FOR QUICK JAW CHANGE CHUCKS

Base, Monoblock and Hard Jaws for:

- SMW Autoblok KNCS-N Series
- Schunk ROTA-G & THW PLUS Series
- SMW Systems/Schunk THW Series Quick Change Chucks



FOR QUICK CHANGE CHUCKS!



BASE JAWS

				SCHUNK		EINS	
SMW Autoblok	SchUNK ROTA	SchUNK THW	SchUNK Or SMW Systems	Base Jaws Part Number	Set Price	Base Jaws Part Number	Set Price
KNCS-N 140	-	-	-	GBK-140-S	\$252.70	-	-
KNCS-N 170	ROTA-G 160	THW PLUS	THW-165 R	GBK-160-S	\$267.90	-	-
KNCS-N 210/225	ROTA-G 200	THW PLUS 215	THW-210 R	GBK-200-S	\$335.00	GBK-200-E	\$242.78
KNCS-N 260	ROTA-G 250	THW PLUS 260	THW-250/265 R	GBK-250-S	\$379.00	GBK-250-E	\$274.75
KNCS-N 315	ROTA-G 315	THW PLUS 315	THW-315 R	GBK-315-S	\$466.00	GBK-315-E	\$338.69
KNCS-N 400	ROTA-G 400	-	THW-400 R	GBK-400-S	\$495.00	-	-
KNCS-N 500	ROTA-G 500	-	THW-500-128 R	GBK-500-S	\$879.13	GBK-500-E	\$697.25
KNCS-N 630	-	-	THW-630-160 R	GBK-630-S	\$1,120.00	GBK-630-E	\$816.48

SOFT MONOBLOCK JAWS-Machinable (Dimensions in mm)

							SCHUNK		EINS	
SMW Autoblok	SchUNK ROTA	SchUNK/SMW Systems THW	Width	Total Height	Mach. Length	OAL	Part Number	Set Price	Part Number	Set Price
KNCS-N 170	ROTA-G160	THW PLUS165/185 THW-165R	20	55.5	35	65	UVB-160-S	\$310.85	-	-
KNCS-N 210/225	ROTA-G200	THW PLUS215 THW-210R	22	64.5	40	84	UVB-200-S	\$368.00	UVB-200-E	\$277.34
KNCS-N 260	ROTA-G250	THW PLUS260 THW-250/265R	26	84	55	99	UVB-250-S	\$372.81	UVB-250-E	\$299.81
KNCS-N 315	ROTA-G315	THW PLUS315 THW-315R	32	90	56	121	UVB-315-S	\$486.00	UVB-315-E	\$364.61
KNCS-N 400	ROTA-G400	THW-400R	32	100	66	148	UVB-400-S	\$541.00	-	-
KNCS-N 500	ROTA-G500	THW-500-128R	45	124	77	175	UVB-500-S	\$950.00	UVB-500-E	\$803.52
KNCS-N 630	-	-	45	134	87	230	UVB-630-S	\$1140.95	UVB-630-E	\$966.82

2 STEP MONOBLOCK HARD JAWS (Dimensions in mm)

								SCHUNK		
SMW Autoblok	SchUNK ROTA	SchUNK THW	SchUNK Or SMW Systems	Width	Total Height	Top Step Height	Usable Height	Part Number	Set Price	
KNCS-N 140	-	-	-	20	44	7	22	GST-140-S	\$514.00	
KNCS-N 170	ROTA-G160	THWPLUS165/185	THW-165R	20	46	7	24	GST-170-S	\$514.00	
KNCS-N 210/225	ROTA-G200	THWPLUS215	THW-210R	22	54	8	29	GST-201-S	\$754.00	
KNCS-N 260	ROTA-G250	THWPLUS260	THW-250/265R	26	65	10	36	GST-251-S	\$833.00	
KNCS-N 315	ROTA-G315	THWPLUS315	THW-315R	32	66	11	32	GST-315-S	\$980.00	
KNCS-N 400	ROTA-G400	-	THW-400R	32	70	11	36	GST-400-S	\$1084.00	
KNCS-N 500	ROTA-G500	-	THW-500-128R	45	93	20	46	GST-500-S	\$1530.00	
KNCS-N 630	-	-	THW-630-160R	45	93	20	46	GST-500-S	\$1530.00	

1 STEP HARD JAWS- Tongue & Groove With Base Jaws (Dimensions in mm)

								SCHUNK		
SMW Autoblok	SchUNK ROTA	SchUNK THW	SchUNK Or SMW Systems	Width	Total Height	Top Step Height	OAL	Part Number	Set Price	
KNCS-N 140	-	-	-	20	36.5	7.5	63	SHF-160-S	\$184.00	
KNCS-N 170	ROTA-G160	THWPLUS165/185	THW-165R	20	36.5	7.5	63	SHF-160-S	\$184.00	
KNCS-N 210/225	ROTA-G200	THW PLUS 215	THW-210R	22	38	10	72	SHF-200-S	\$233.00	
KNCS-N 260	ROTA-G250	THWPLUS260	THW-250/265R	30	50	14	90	SHF-250-S	\$264.00	
KNCS-N 315	ROTA-G315	THWPLUS315	THW-315R	30	50	14	90	SHF-250-S	\$264.00	
KNCS-N 400	ROTA-G400	-	THW-400R	36	56	15	105	SHF-315-S	\$325.00	
KNCS-N 500	ROTA-G500	-	THW-500-128R	45	75	20	130	SHF-400-S	\$657.00	
KNCS-N 630	-	-	THW-630-160R	45	75	20	150	SHF-400-S	\$657.00	

Call Us Or Visit Our Website For Our Complete Selection!

LATHE CHUCKS
LIVE CENTERS

VICE JAWS
VICE ACCESSORIES

STRAIGHT SHANK
COLLET HOLDERS

TAP HOLDERS
DRILL CHUCKS

CARBIDE INSERTS
THREADING/GROOVING

CUTTING TOOLS
MACHINERY

PRECISION TOOLS
DEBURRING

COOLANT/FLUIDS
TOOL STORAGE