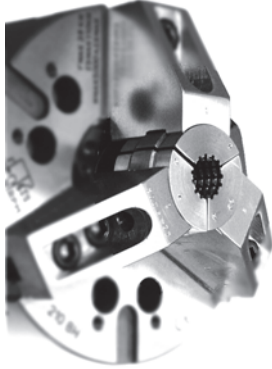


# COLLET PADS & TOP JAWS



## COLLET PADS & TOP JAWS FOR JAW CHUCKS - Collet Pads for Warner Swasey and "S" Style Collet Chucks



Collet Pads were originally used on Turret lathes - these days they can be adapted to be used on all common jaw chucks. The way they work is as follows:

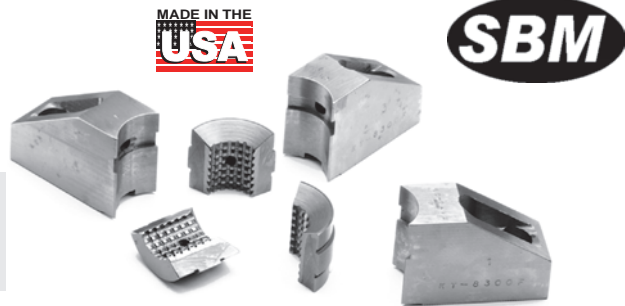
- Replace your existing jaws with a set of special collet pad top jaws made specifically for your particular chuck. These special jaws are made to hold Warner Swasey style turret lathe pads. They have a screw hole bored through them so that you can easily change pads from one size to another without having to remove the jaws.
- Depending on the size of your workpiece or the bar that you need to run through your machine you can purchase various sizes and shapes of collet pads. Collet pads are available with the inside bore Round, with smooth or serrated inside surface; Square, with smooth or serrated inside surface and Hex, with smooth or serrated inside surface.
- Emergency Pads are also available - these are very popular - because they are soft and can be bored by the machinist to the desired shape and size.

### TOP JAWS FOR COLLET PADS

For precision workholding, Top Jaws for collet pads are designed to mount directly onto your power or manual chuck. Using Top Jaws offers an economical, convenient way to increase your chuck capacity. Top Jaws are Quick Change, mounting in minutes.



Collet Pad Top Jaws can be configured to fit most 3 jaw chucks that use soft top jaws, regardless of the lock type (Serrated or American Standard). Please call if you do not see your chuck listed below.



**Helpful Hint:**  
A fine boring cut of 0.030", when collet pad top jaws are installed for the first time on your jaw chuck, easily prepares the collet pad top jaws for high concentricity operation for years to come when loaded on the same master jaws.

Chuck Size	Chuck Make & Model	Critical Dimensions			Warner Swasey Collet Pad #	Max Round Collet Pad Capacity	Collet Pad Top Jaws Part Number	Price Per Set of 3 Jaws
		Groove Width	Screw Size	Hole Space				
6"	KITAGAWA - B-206, B-06; HOWA 6	0.472	M10	0.787	3	1.5"	CPJ-KT0600WS3-U	\$452.00
	MMK (Matsumoto) - HA_-6, ZA_-6	0.433	M8	0.985	3	1.5"	CPJ-SG0600WS3-U	\$452.00
8"	KITAGAWA - B-208, B-08; STRONG N208 MMK (Matsumoto) - ZA_-8, HA_-8	0.551	M12	0.984	3	1.5"	CPJ-KT0800WS3-U	\$452.00
					4	2"	CPJ-KT0800WS4-U	\$452.00
					5	2.5"	CPJ-KT0800WS5-U	\$452.00
	8" NIKKO	0.551	M10	1.181	3	1.5"	CPJ-SG0800WS3-U	\$452.00
					4	2"	CPJ-SG0800WS4-U	\$452.00
10"	KITAGAWA - B210, B10; STRONG N210 MMK (Matsumoto) - ZA_-10, HA_-10	0.630	M12	1.181	3	1.5"	CPJ-KT1000WS3-U	\$483.00
					4	2"	CPJ-KT1000WS4-U	\$483.00
					5	2.5"	CPJ-KT1000WS5-U	\$483.00
					6	3"	CPJ-KT1000WS6-U	\$483.00
	10" MMK (Matsumoto) ON HITACHI SEIKI CNC	0.630	M12	1.250	3	1.5"	CPJ-SE1000WS3-U	\$483.00
					4	2"	CPJ-SE1000WS4-U	\$483.00
					5	2.5"	CPJ-SE1000WS5-U	\$483.00
					6	3"	CPJ-SE1000WS6-U	\$483.00
12"	KITAGAWA - B-12, HO-12; MMK (Matsumoto) - ZA_-12, HA_-12; HOWA - HO15M12	0.709	M14	1.181	3	1.5"	CPJ-KT1200WS3-U	\$512.00
					4	2"	CPJ-KT1200WS4-U	\$512.00
					5	2.5"	CPJ-KT1200WS5-U	\$512.00
	KITAGAWA - B-212	0.827	M16	1.181	6	3"	CPJ-KT1200WS6-U	\$512.00
					3	1.5"	CPJ-KT1208WS3-U	\$512.00
					4	2"	CPJ-KT1208WS4-U	\$512.00
15"	KITAGAWA - B-15	0.866	M20	1.690	5	2.5"	CPJ-KT1208WS5-U	\$512.00
					6	3"	CPJ-KT1208WS6-U	\$512.00
					3	1.5"	CPJ-KT1500WS3-U	\$532.00
					4	2"	CPJ-KT1500WS4-U	\$532.00
					5	2.5"	CPJ-KT1500WS5-U	\$532.00
	KITAGAWA - B-215	1.005	M20	1.690	6	3"	CPJ-KT1500WS6-U	\$532.00
					3	1.5"	CPJ-KT1508WS3-U	\$532.00
					4	2"	CPJ-KT1508WS4-U	\$532.00
					5	2.5"	CPJ-KT1508WS5-U	\$532.00
					6	3"	CPJ-KT1508WS6-U	\$532.00

Call Us Today For All Of Your Machine Tool Needs!

## WARNER & SWASEY COLLET PADS

Convert Your 3 Jaw Chuck Into A Precision Collet Chuck. For Warner & Swasey And Jaw Chuck Lathes.

Collet Pads provide high concentricity, uniformity of gripping power and ease of change for various sizes of bar type work with OD holding. Originally designed for use with Warner & Swasey and other screw machines, master collets have been adapted for use with Jaw Chucks by using collet pad top jaws.



**How To Order:**

1. Select collet type, shape and surface.
2. Find your desired range of bore in 1/16 increments.
3. Add the decimal equivalent to the end of part number.

**Ordering Example:**

For a #3 W&S Machine, 1/4" serrated round ID, the part number would be: **CP-WS3RE02500**  
For decimal equivalents, please see the table on page 65.

Warner & Swasey Machine Number	Used On Warner & Swasey Master Collets	Capacity of Master (ID)	Inside Diameter Shape	Inside Surface	Desired Range Of Bore (1/16 inc.)	Part Number (add bore of collet pad)	Price Per Set	Screw				
<b>#3</b>	<b>461-1002, 462-1024, 1369-1008</b>	1-1/2	Round	Soft Emergency		Blank	<b>CP-WS3BLANK-U</b>	<b>\$36.63</b>	<b>\$3.00 ea</b>			
				Smooth	1/4 to 5/16	<b>CP-WS3RM</b>	<b>\$53.74</b>					
					3/8 to 1-1/2	<b>CP-WS3RM</b>	<b>\$41.34</b>					
				Serrated	1/4 to 5/16	<b>CP-WS3RE</b>	<b>\$70.41</b>					
					3/8 to 15/16	<b>CP-WS3RE</b>	<b>\$58.01</b>					
				1 to 1-1/2	<b>CP-WS3RE</b>	<b>\$58.01</b>						
		1-5/16	Hex	Smooth	1/4 to 5/16	<b>CP-WS3HM</b>	<b>\$69.47</b>					
					3/8 to 1-5/16	<b>CP-WS3HM</b>	<b>\$53.44</b>					
				Serrated	1/4 to 5/16	<b>CP-WS3HE</b>	<b>\$94.47</b>					
					3/8-1-5/16	<b>CP-WS3HE</b>	<b>\$78.44</b>					
				Smooth	1/4 to 5/16	<b>CP-WS3SM</b>	<b>\$69.47</b>					
					3/8 to 1-1/16	<b>CP-WS3SM</b>	<b>\$53.44</b>					
1/4 to 5/16	<b>CP-WS3SE</b>	<b>\$94.47</b>										
<b>#4</b>	<b>1129-1102, 1369-113</b>	2	Round	Soft Emergency		Blank	<b>CP-WS4BLANK-U</b>	<b>\$45.38</b>	<b>\$3.00 ea</b>			
				Smooth	1/4 to 5/16	<b>CP-WS4RM</b>	<b>\$64.23</b>					
					3/8 to 2	<b>CP-WS4RM</b>	<b>\$49.41</b>					
				Serrated	1/4 to 5/16	<b>CP-WS4RE</b>	<b>\$80.90</b>					
					3/8 to 15/16	<b>CP-WS4RE</b>	<b>\$66.08</b>					
				1 to 2	<b>CP-WS4RE</b>	<b>\$66.08</b>						
		1-3/4	Hex	Smooth	1/4 to 5/16	<b>CP-WS4HM</b>	<b>\$79.66</b>					
					3/8 to 1-3/4	<b>CP-WS4HM</b>	<b>\$61.51</b>					
				Serrated	1/4 to 5/16	<b>CP-WS4HE</b>	<b>\$104.96</b>					
					3/8 to 1-3/4	<b>CP-WS4HE</b>	<b>\$86.51</b>					
				Smooth	1/4 to 5/16	<b>CP-WS4SM</b>	<b>\$79.66</b>					
					3/8 to 1-3/8	<b>CP-WS4SM</b>	<b>\$61.51</b>					
		1/4 to 5/16	<b>CP-WS4SE</b>	<b>\$104.96</b>								
		5/16 to 1-3/8	<b>CP-WS4SE</b>	<b>\$86.51</b>								
		<b>#5</b>	<b>471-1001</b>	2-1/2	Round	Soft Emergency		Blank		<b>CP-WS5BLANK-U</b>	<b>\$52.43</b>	<b>\$3.00 ea</b>
						Smooth	1/4 to 5/16	<b>CP-WS5RM</b>		<b>\$78.65</b>		
							3/8 to 2-1/2	<b>CP-WS5RM</b>		<b>\$60.50</b>		
						Serrated	1/4 to 5/16	<b>CP-WS5RE</b>		<b>\$95.32</b>		
3/8 to 15/16	<b>CP-WS5RE</b>						<b>\$77.17</b>					
1 to 2-1/2	<b>CP-WS5RE</b>					<b>\$77.17</b>						
2-3/16	Hex			Smooth	1/4 to 5/16	<b>CP-WS5HM</b>	<b>\$94.38</b>					
					3/8 to 2-3/16	<b>CP-WS5HM</b>	<b>\$72.60</b>					
				Serrated	1/4 to 5/16	<b>CP-WS5HE</b>	<b>\$119.38</b>					
					3/8 to 2-3/16	<b>CP-WS5HE</b>	<b>\$97.60</b>					
				Smooth	1/4 to 5/16	<b>CP-WS5SM</b>	<b>\$94.38</b>					
					3/8 to 1-3/4	<b>CP-WS5SM</b>	<b>\$72.60</b>					
1/4 to 5/16	<b>CP-WS5SE</b>			<b>\$119.38</b>								
3/8 to 1-3/4	<b>CP-WS5SE</b>			<b>\$97.60</b>								
<b>#6</b>	<b>4669-1001</b>			3	Round	Soft Emergency		Blank	<b>CP-WS6BLANK-U</b>	<b>\$95.79</b>	<b>\$3.00 ea</b>	
						Smooth	1/4 to 5/16	<b>CP-WS6RM</b>	<b>\$150.75</b>			
							3/8 to 3	<b>CP-WS6RM</b>	<b>\$115.96</b>			
						Serrated	1/4 to 5/16	<b>CP-WS6RE</b>	<b>\$167.41</b>			
		3/8 to 15/16	<b>CP-WS6RE</b>				<b>\$132.63</b>					
		1 to 3	<b>CP-WS6RE</b>			<b>\$132.63</b>						
		2-5/8	Hex	Smooth	1/4 to 5/16	<b>CP-WS6HM</b>	<b>\$199.25</b>					
					3/8 to 2-5/8	<b>CP-WS6HM</b>	<b>\$153.27</b>					
				Serrated	1/4 to 5/16	<b>CP-WS6HE</b>	<b>\$224.25</b>					
					3/8 to 2-5/8	<b>CP-WS6HE</b>	<b>\$178.27</b>					
				Smooth	1/4 to 5/16	<b>CP-WS6SM</b>	<b>\$199.25</b>					
					3/8 to 2-1/8	<b>CP-WS6SM</b>	<b>\$153.27</b>					
		1/4 to 5/16	<b>CP-WS6SE</b>	<b>\$224.25</b>								
		3/8 to 2-1/8	<b>CP-WS6SE</b>	<b>\$178.27</b>								

Call Us Or Visit Our Website For Our Complete Selection!

# COLLET PADS-WARNER & SWASEY & "S" STYLE

## "S" STYLE COLLET PADS



- Available hardened & ground for round, hex or square work shapes with the inside pad surface smooth, square or serrated
- Also available as soft pads to machine to size (called emergency collet pads)
- S12, S16, S20 & S22 series pads are 3 split
- S26, S30 & S40 are 4 split
- Clamp screws also available, please see following page

**How To Order:**

1. Select collet type, shape and surface.
2. Find your desired range of bore in 1/16 increments.
3. Add the decimal equivalent to the end of part number.

**Ordering Example:**

For S16 collet pads, 1/4" serrated round ID, the part number would be: **CP-S16RE02500**  
For decimal equivalents, please see following page.



Type	ID Shape	Inside Surface	Desired Bore Range (1/16 inc.)	Part Number (add bore of collet pad)	Price Per Set	
S12	Round	Soft Emergency		CP-S12BLANK-U	\$40.99	
		Smooth	1/4 - 5/16	CP-S12RM	---Y	\$54.60
			3/8 to 1-1/4	CP-S12RM	---Y	\$42.00
		Serrated	1/4 to 5/16	CP-S12RE	---Y	\$71.27
	3/8 to 1-3/16		CP-S12RE	---Y	\$58.67	
	Hex	Smooth	1/4 to 5/16	CP-S12HM	---Y	\$74.26
			3/8 to 1-1/16	CP-S12HM	---Y	\$57.13
		Serrated	1/4 to 5/16	CP-S12HE	---Y	\$99.26
			3/8 to 1-1/16	CP-S12HE	---Y	\$82.13
	Square	Smooth	1/4 to 5/16	CP-S12SM	---Y	\$74.26
			3/8 to 7/8	CP-S12SM	---Y	\$57.13
		Serrated	1/4 to 5/16	CP-S12SE	---Y	\$99.26
3/8 to 7/8			CP-S12SE	---Y	\$82.13	
S16	Round	Soft Emergency		CP-S16BLANK-U	\$52.08	
		Smooth	1/4 to 5/16	CP-S16RM	---Y	\$67.94
			3/8 to 1-5/8	CP-S16RM	---Y	\$52.26
		Serrated	1/4 to 5/16	CP-S16RE	---Y	\$84.60
	3/8 to 1-5/8		CP-S16RE	---Y	\$68.93	
	Hex	Smooth	1/4 to 5/16	CP-S16HM	---Y	\$95.24
			3/8 to 1-5/16	CP-S16HM	---Y	\$73.26
		Serrated	1/4 to 5/16	CP-S16HE	---Y	\$120.24
			3/8 to 1-5/16	CP-S16HE	---Y	\$98.26
	Square	Smooth	1/4 to 5/16	CP-S16SM	---Y	\$95.24
			3/8 to 1-1/8	CP-S16SM	---Y	\$73.26
		Serrated	1/4 to 5/16	CP-S16SE	---Y	\$120.24
3/8 to 1-1/8			CP-S16SE	---Y	\$98.26	
S20	Round	Soft Emergency		CP-S20BLANK-U	\$51.08	
		Smooth	1/4 to 5/16	CP-S20RM	---Y	\$67.71
			3/8 to 2	CP-S20RM	---Y	\$52.08
		Serrated	1/4 to 5/16	CP-S20RE	---Y	\$84.38
	3/8 to 2		CP-S20RE	---Y	\$68.75	
	Hex	Smooth	1/4 to 5/16	CP-S20HM	---Y	\$87.37
			3/8 to 1-5/8	CP-S20HM	---Y	\$67.21
		Serrated	1/4 to 5/16	CP-S20HE	---Y	\$112.37
			3/8 to 1-5/8	CP-S20HE	---Y	\$92.21
	Square	Smooth	1/4 to 5/16	CP-S20SM	---Y	\$87.37
			3/8 to 1-3/8	CP-S20SM	---Y	\$67.21
		Serrated	1/4 to 5/16	CP-S20SE	---Y	\$112.37
3/8 to 1-3/8			CP-S20SE	---Y	\$92.21	
S22	Round	Soft Emergency		CP-S22BLANK-U	\$62.17	
		Smooth	1/4 to 5/16	CP-S22RM	---Y	\$82.13
			3/8 to 2-1/4	CP-S22RM	---Y	\$63.18
		Serrated	1/4 to 5/16	CP-S22RE	---Y	\$98.79
	3/8 to 2-1/4		CP-S22RE	---Y	\$79.84	
	Hex	Smooth	1/4 to 5/16	CP-S22HM	---Y	\$109.66
			3/8 to 1-15/16	CP-S22HM	---Y	\$84.35
		Serrated	1/4 to 5/16	CP-S22HE	---Y	\$134.65
			3/8 to 1-15/16	CP-S22HE	---Y	\$109.64
	Square	Smooth	1/4 to 5/16	CP-S22SM	---Y	\$109.66
			3/8 to 1-9/16	CP-S22SM	---Y	\$84.35
		Serrated	1/4 to 5/16	CP-S22SE	---Y	\$134.66
3/8 to 1-9/16			CP-S22SE	---Y	\$109.35	

Type	ID Shape	Inside Surface	Desired Bore Range (1/16 inc.)	Part Number (add bore of collet pad)	Price Per Set	
S26	Round	Soft Emergency		CP-S26BLANK-U	\$67.21	
		Smooth	1/4 to 5/16	CP-S26RM	---Y	\$88.68
			3/8 to 2-5/8	CP-S26RM	---Y	\$68.22
		Serrated	1/4 to 5/16	CP-S26RE	---Y	\$105.35
	3/8 to 2-5/8		CP-S26RE	---Y	\$84.88	
	Hex	Smooth	1/4 to 5/16	CP-S26HM	---Y	\$116.21
			3/8 to 2-1/4	CP-S26HM	---Y	\$89.39
		Serrated	1/4 to 5/16	CP-S26HE	---Y	\$112.97
			3/8 to 2-1/4	CP-S26HE	---Y	\$114.39
	Square	Smooth	1/4 to 5/16	CP-S26SM	---Y	\$116.21
			3/8 to 1-13/16	CP-S26SM	---Y	\$89.39
		Serrated	1/4 to 5/16	CP-S26SE	---Y	\$141.21
3/8 to 1-13/16			CP-S26SE	---Y	\$114.39	
S30	Round	Soft Emergency		CP-S30BLANK-U	\$113.30	
		Smooth	1/4 to 5/16	CP-S30RM	---Y	\$133.25
			3/8 to 3	CP-S30RM	---Y	\$102.50
		Serrated	1/4 to 5/16	CP-S30RE	---Y	\$149.22
	3/8 to 3		CP-S30RE	---Y	\$119.17	
	Hex	Smooth	1/4 to 5/16	CP-S30HM	---Y	\$172.58
			3/8 to 2-9/16	CP-S30HM	---Y	\$132.75
		Serrated	1/4 to 5/16	CP-S30HE	---Y	\$197.58
			3/8 to 2-9/16	CP-S30HE	---Y	\$157.75
	Square	Smooth	1/4 to 5/16	CP-S30SM	---Y	\$172.58
			3/8 to 2-1/16	CP-S30SM	---Y	\$132.75
		Serrated	1/4 to 5/16	CP-S30SE	---Y	\$197.58
3/8 to 2-1/16			CP-S30SE	---Y	\$157.75	
S35	Round	Soft Emergency		CP-S35BLANK-U	\$104.42	
		Smooth	1/4 to 5/16	CP-S35RM	---Y	\$152.91
			3/8 to 3-1/2	CP-S35RM	---Y	\$117.63
		Serrated	1/4 to 5/16	CP-S35RE	---Y	\$169.58
	3/8 to 3-1/2		CP-S35RE	---Y	\$134.29	
	Hex	Smooth	1/4 to 5/16	CP-S35HM	---Y	\$170.41
			3/8 to 2-15/16	CP-S35HM	---Y	\$131.08
		Serrated	1/4 to 5/16	CP-S35HE	---Y	\$195.41
			3/8 to 2-15/16	CP-S35HE	---Y	\$156.08
	Square	Smooth	1/4 to 5/16	CP-S35SM	---Y	\$170.41
			3/8 to 2-7/16	CP-S35SM	---Y	\$131.08
		Serrated	1/4 to 5/16	CP-S35SE	---Y	\$195.41
3/8 to 2-7/16			CP-S35SE	---Y	\$156.08	
S40	Round	Soft Emergency		CP-S40BLANK-U	\$318.28	
		Smooth	1/4 to 5/16	CP-S40RM	---Y	\$415.08
			3/8 to 4	CP-S40RM	---Y	\$319.29
		Serrated	1/4 to 5/16	CP-S40RE	---Y	\$431.75
	3/8 to 3-15/16		CP-S40RE	---Y	\$335.96	
	Hex	Smooth	1/4 to 5/16	CP-S40HM	---Y	\$454.40
			3/8 to 3-7/16	CP-S40HM	---Y	\$349.54
		Serrated	1/4 to 5/16	CP-S40HE	---Y	\$479.40
			3/8 to 3-7/16	CP-S40HE	---Y	\$374.54
	Square	Smooth	1/4 to 5/16	CP-S40SM	---Y	\$454.50
			3/8 to 2-13/16	CP-S40SM	---Y	\$349.54
		Serrated	1/4 to 5/16	CP-S40SE	---Y	\$479.40
3/8 to 2-13/16			CP-S40SE	---Y	\$374.54	

Call Us Today For All Of Your Machine Tool Needs!

# COLLET PAD ACCESSORIES

TABLE OF CONTENTS

LATHE CHUCKS  
LIVE CENTERS

## EMERGENCY SOFT PRE-BORED COLLET PADS

- Pre-bored to save time
- Sold by the set
- Additional collet pad pre-bored sizes and styles available- please call for more information
- Made in USA



Collet Pad Series	Prebored To:	Part Number	Price Each
WS4	0.950	CP-WS4BL10000-U	\$55.00
WS4	1.450	CP-WS4BL15000-U	\$55.00
WS5	0.950	CP-WS5BL10000-U	\$62.00
S30	0.450	CP-S30BL05000-U	\$123.00
S30	0.950	CP-S30BL10000-U	\$123.00
S30	1.450	CP-S30BL15000-U	\$123.00
S30	1.950	CP-S30BL20000-U	\$123.00
S30	2.450	CP-S30BL25000-U	\$123.00

## CLAMP SCREWS FOR "S" STYLE COLLET PADS

- Assembly includes 1 clamp and 1 screw
- Sold by each
- Made in USA



For Collet Pad Series	Part Number	Price Each
S12, S15, S16, S20 & S26	CP-SCLMPSCRW1-S	\$11.00
S22, S30, S35, S40 & S50	CP-SCLMPSCRW2-S	\$11.00

## PART NUMBER SUFFIX CHART

For Collet Pads



Use the table to customize your part number. For example, a #3 W & S collet pad, round shape, serrated inside surface with a 1/4" ID, the part number would be:

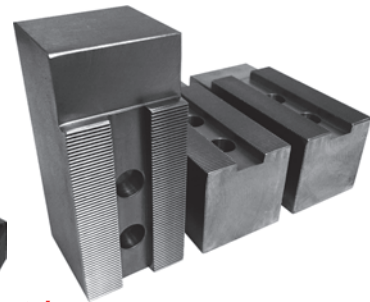
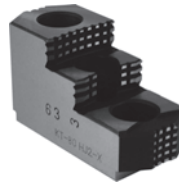
**CP-WS3RE02500**

Frac.	Dec.	Part No. Suffix	Frac.	Dec.	Part No. Suffix	Frac.	Dec.	Part No. Suffix	Frac.	Dec.	Part No. Suffix
1/4	0.2500	02500	1-3/16	1.1875	11875	2-1/8	2.1250	21250	3-1/16	3.0625	30625
5/16	0.3125	03125	1-1/4	1.2500	12500	2-3/16	2.1875	21875	3-1/8	3.1250	31250
3/8	0.3750	03750	1-5/16	1.3125	13125	2-1/4	2.2500	22500	3-3/16	3.1875	31875
7/16	0.4375	04375	1-3/8	1.3750	13750	2-5/16	2.3125	23125	3-1/4	3.2500	32500
1/2	0.5000	05000	1-7/16	1.4375	14375	2-3/8	2.3750	23750	3-5/16	3.3125	33125
9/16	0.5625	05625	1-1/2	1.5000	15000	2-7/16	2.4375	24375	3-3/8	3.3750	33750
5/8	0.6250	06250	1-9/16	1.5625	15625	2-1/2	2.5000	25000	3-7/16	3.4375	34375
11/16	0.6875	06875	1-5/8	1.6250	16250	2-9/16	2.5625	25625	3-1/2	3.5000	35000
3/4	0.7500	07500	1-11/16	1.6875	16875	2-5/8	2.6250	26250	3-9/16	3.5625	35625
13/16	0.8125	08125	1-3/4	1.7500	17500	2-11/16	2.6875	26875	3-5/8	3.6250	36250
7/8	0.8750	08750	1-13/16	1.8125	18125	2-3/4	2.7500	27500	3-11/16	3.6875	36875
15/16	0.9375	09375	1-7/8	1.8750	18750	2-13/16	2.8125	28125	3-3/4	3.7500	37500
1	1.0000	10000	1-15/16	1.9375	19375	2-7/8	2.8750	28750	3-13/16	3.8125	38125
1-1/16	1.0625	10625	2	2.0000	20000	2-15/16	2.9375	29375	3-7/8	3.8750	38750
1-1/8	1.1250	11250	2-1/16	2.0625	20625	3	3.0000	30000	3-15/16	3.9375	39375

## SPECIAL ORDER JAWS AVAILABLE!



- Super Quick Turnaround Time- 5 Days Or Less In Most Cases!
- **Special Order Round Jaws Up To 32" dia!**
- Special Order Soft Jaws Up To 8" Height!
- Soft Jaws Available In Any Length-Steel Or Aluminum
- Tongue And Groove, Square Serrated & Acme Serrated Jaws Up To 8" Height!
- Made Per Your Special Specifications In The USA! Please See Our Special Order Forms On Pages 635-640.



**Special Order Chuck Jaws Available! Please Call Today For A Quote!**

## POWER CHUCK LUBRICANT

**LOWER FRICTION & INCREASE GRIPPING FORCE!**

**CHUCK-EEZ**

B

**CHUCK-EEZ®** ensures long chuck life, machine accuracy and operator safety. Formulated with a high percentage of molybdenum disulfide to reduce seizing, galling, fretting wear and lower friction under conditions of extreme pressure. Rust and oxidation inhibitors incorporated to maximize complete rust protection. Able to withstand pressures up to 500,000 pounds per square inch!

- Double to triple clamping pressure
- Keeps work piece clamped in place
- Provides boundary lubrication protection
- Lowers friction and wear
- Assists in wear-in of new chucks
- Lowers maintenance costs
- High resistance to centrifuge force
- Greasing chuck once per shift is recommended
- **QUANTITY DISCOUNTS!**



Container Size	Case Qty	Part Number	Price Each
4 Oz Cartridge	24	EZ-21471	\$5.86
4 Oz Cartridge w/ grease gun	1	EZ-OKIT-21471	\$31.93
16 Oz Cartridge	12	EZ-21478	\$17.93
10 Lb Pail	1	EZ-21444	\$146.98
40 Lb Pail	1	EZ-21445	\$561.04
135 Lb Keg	1	EZ-21446	\$1,848.83
450 Lb Drum	1	EZ-21448	\$5,894.85

Call Us Or Visit Our Website For Our Complete Selection!

**2019-20 MASTER CATALOG**

**65**

VICE JAWS  
VICE ACCESSORIES

STRAIGHT SHANK  
COLLET HOLDERS

TAP HOLDERS  
DRILL CHUCKS

CARBIDE INSERTS  
THREADING/GROOVING

CUTTING TOOLS  
MACHINERY

PRECISION TOOLS  
DEBURRING

COOLANT/FLUIDS  
TOOL STORAGE