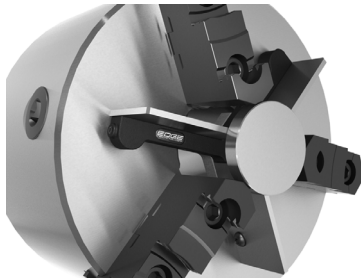


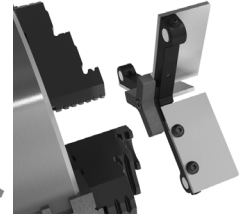
CHUCK/LATHE STOPS

CHUCK STOP SET

For 3 Jaw Chucks 6" & Larger



Designed to locate shorter parts beyond the chuck jaws to provide clearance for facing operations. The Chuck Stop includes 10 sets of different height parallel bars to achieve the required spacing. A centering plug is used to keep the unit centered to the ID of the chuck and strong neodymium magnets secure it to the face of the chuck.



Accurately Locate Parts Beyond The Chuck Jaws To Provide Clearance For Facing Operations!

- 10 sets of hardened parallel bars with case. 0.0002" parallelism accuracy
- Parallel bar heights from 1/2" to 1-5/8" in 1/8" increments
- Strong neodymium magnets secure the stop to the chuck face
- A centering plug fits the ID of the chuck and keeps the Chuck Stop centered
- Included centering plug diameters are 1.4", 2.0", 2.5", 3.0", 3.5", and 4.0"
- The Chuck Stop is 6.0" in diameter
- Designed for 3 jaw chucks only
- For use on 6" diameter chucks and larger



Set Includes:

- Chuck stop
- 10 parallels-1/8" to 1-5/8" x 1/8" increments
- 6 center plugs

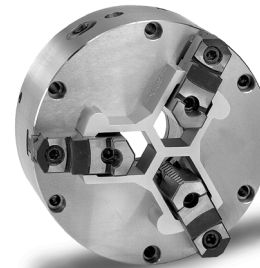
CHUCK STOP SET

Part # EDGE-30000

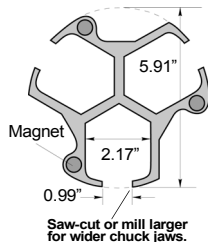
\$149.99 ea

CHUCK STOPS

This product is so useful and simple, you'll wonder why you never thought of it. The Royal chuck stop is a precision machined aluminum extrusion which mounts squarely against the face of almost any 3 jaw lathe chuck, providing a fixed reference surface for workpieces to locate against.



Easily Locate Short Parts In A 3-Jaw Chuck!



FEATURES:

- Allows short parts to project past the chuck jaws, providing clearance for facing operations.
- Eliminates the need to bore soft jaws, reducing setup time.
- Front and rear locating surfaces are parallel within ± 0.0004 ".
- 25mm slot width can be milled larger for chucks with wider jaws.
- Interlocking design coupled with three strong magnets holds stop securely in place-much safer than using parallels which can be thrown out by centrifugal force.
- Anodized aluminum finish provides good wear-resistance.

Accommodates Chuck Jaws Up To 2 1/8" Wide!



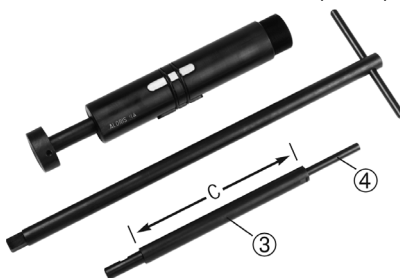
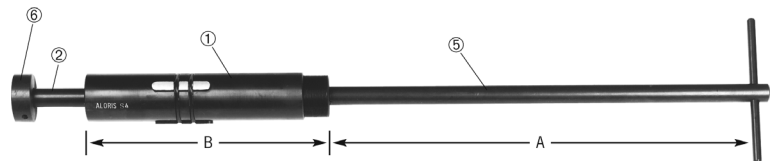
Description	Part Number	Set Price
Standard Set: 15, 20 & 25mm stops	ROY-25200	\$289.10
Deluxe Set: 15, 20, 25, 30 & 35mm stops	ROY-25210	\$502.74

UNIVERSAL LATHE SPINDLE & COLLET STOPS

For CNC, Manual Lathes & Indexing Heads

Cut time dramatically on jobs where the part must be registered in machine more than one time or where more than one part is to be machined. Just slide the body into the spindle of the machine, rotate the T-handle wrench which expands 3 keys, locking the body securely into position. When the chuck is opened and the next piece is loaded into machine all distances from the stop will repeat exactly.

Fully Adjustable To Fit A Wide Variety Of Applications!



- Completely self-centering
- Installs in seconds!
- Greater rigidity insures duplication
- Cannot vibrate or change position once it is locked
- Rejections cut to a minimum

A	B	C	Spindle Size	Part Number	Price
12-1/4"	4-1/2"	6"	1" - 1-1/4"	ALOR-S1	\$339.00
19"	6-7/16"	6-1/2"	1-5/16" - 1-11/16"	ALOR-S2	\$418.00
21-1/2"	7-7/8"	10-1/2"	1-3/4" - 2-7/16"	ALOR-S3	\$497.00
22-1/4"	9-1/4"	10-1/2"	2-1/2" - 3-1/2"	ALOR-S4	\$751.00

Call Us Today For All Of Your Machine Tool Needs!

2019-20 MASTER CATALOG

LATHE/CHUCK STOPS

ACCU-STOP

Customizable Precision Stop For CNC Lathes

Precise. Versatile. Safe.

The Accu-Stop spindle stop provides a solid, precise stopping surface for work pieces. Its modular assembly allows you to stop parts from anywhere outside the chuck's bore to nearly the entire length of the draw tube.

How Accu-Stop Works

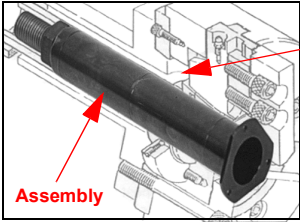
Accu-Stop bolts to the front of your CNC lathe's chuck, allowing the work piece and the stop to turn together to eliminate friction, gouging, and damage to the work piece. Modular assembly makes it easy to configure along the draw tube to accommodate a wide range of work piece lengths.

The Accu-Stop spindle stop is made of low-carbon steel that is coated with zinc oxide for durability. The standard assembly includes: faceplate and sub-faceplate, three extension tubes, end cap, threaded rod, and lock nut.

All that is needed to order is the make / model of your chuck and an actual measured ID of your drawtube.

Assembly Includes:

- Face Plate
 - Sub Face Plate
 - 3 extension tubes
 - End Cap
 - Threaded rod & lock nut
- Package Includes:**
- Complete assembly
 - Rigid strap wrench
 - Accu-stop vise



Adjust length by adding or removing tube section and adjusting rod.

ORDERING INFORMATION:

- To Order, We Will Need:
1. Make/Model of lathe
 2. Date manufactured
 3. Make/Model of chuck
 4. Inside diameter of the draw tube.



- Ensures accuracy/repeatability within .0005"
- Heavy duty and highly accurate
- Replaces inaccurate and expensive stopping mechanisms
- Customize to precisely fit your needs
- For Big Bore chucks, use next larger size up (ex: BB-208 will use AS-3000)
- Made in the USA



Chuck Size	Description	Part Number	Price Each
6"	Assembly 16.5"	AS-1000	\$554.80
	Accu-Stop Package	AS-P1000	\$893.95
	Extra Tube (5" Long)	AS-1003	\$65.00
	Tubing stop option*	AS-TSO1000	\$85.00
8"	Assembly 16.5"	AS-2000	\$554.80
	Accu-Stop Package	AS-P2000	\$893.95
	Extra Tube (5" Long)	AS-2003	\$65.00
	Tubing stop option*	AS-TSO2000	\$85.00
10"	Assembly 16.5"	AS-3000	\$649.80
	Accu-Stop Package	AS-P3000	\$988.95
	Extra Tube (5" Long)	AS-3003	\$79.00
	Tubing stop option*	AS-TSO3000	\$98.00
12"	Assembly 20.25" (under 3" dia drawtube)	AS-4000SB	\$934.80
	Assembly 20.25" (under 3" dia drawtube)	AS-4000LB	\$944.30
	Package (under 3" dia drawtube)	AS-P4000SB	\$1,273.95
	Package (over 3" dia drawtube)	AS-P4000LB	\$1,283.45
	Extra Tube (6" Long)	AS-4003SB	\$79.00
	Tubing stop option*	AS-TSO4000	\$115.00

*For Big Bore Chucks, Please Order The Next Larger Size-Ex: BB-208 will use AS-3000 series
*If machining tubing, you may need the tubing stop option

TAILSTOCK ALIGNMENT BAR

The Tailstock Alignment Bar is used to align the tailstock to the headstock. Accurate alignment is critical to eliminate any taper in work pieces that are supported by the tail stock. It makes the process of tailstock alignment fast, easy and accurate.



Tailstock Alignment Bar
Part # EDGE-27000
\$49.99 ea

- Hardened steel bar ends are precision ground after assembly for superior accuracy
- Bar end diameters are equal within 0.0001"
- Bar made from high strength aluminum
- Durable anodized finish

POWER CHUCK LUBRICANT

CHUCK-EEZ® ensures long chuck life, machine accuracy and operator safety. Formulated with a high percentage of molybdenum disulfide to reduce seizing, galling, fretting wear and lower friction under conditions of extreme pressure. Rust and oxidation inhibitors incorporated to maximize complete rust protection. Able to withstand pressures up to 500,000 pounds per square inch!



- Double to triple clamping pressure
- Keeps work piece clamped in place
- Provides boundary lubrication protection
- Lowers friction and wear
- Assists in wear-in of new chucks
- Lowers maintenance costs
- High resistance to centrifuge force
- For optimum performance, it is highly recommended that you grease your chuck once per shift
- **QUANTITY DISCOUNTS!**

Quantity Discounts	
12-23	Save 10%
24-35	Save 12%
36 +	Save 15%



LOWER FRICTION & INCREASE GRIPPING FORCE!

Container Size	Case Qty	Part Number	Price Each
4 Oz Cartridge	24	EZ-21471	\$5.86
4 Oz Cartridge w/ grease gun	1	EZ-OKIT-21471	\$31.93
16 Oz Cartridge	12	EZ-21478	\$17.93
10 Lb Pail	1	EZ-21444	\$146.98
40 Lb Pail	1	EZ-21445	\$561.04
135 Lb Keg	1	EZ-21446	\$1,848.83
450 Lb Drum	1	EZ-21448	\$5,894.85

Call Us Or Visit Our Website For Our Complete Selection!

LATHE CHUCKS
LIVE CENTERS

VICE JAWS
VICE ACCESSORIES

STRAIGHT SHANK
COLLET HOLDERS

TAP HOLDERS
DRILL CHUCKS

CARBIDE INSERTS
THREADING/GROOVING

CUTTING TOOLS
MACHINERY

PRECISION TOOLS
DEBURRING

COOLANT/FLUIDS
TOOL STORAGE