

PITBULL CLAMPS

The Pitbull™ Clamp is a unique method of holding your workpieces using a low gripping profile, generating both vertical and horizontal clamping forces. For example, the Pitbull™ Clamp which uses a 8-32 screw clamps on only .100 of an inch while generating up to 1500 lbs. of vertical and horizontal clamping forces. It uses a standard cap screw and an oil resistant O-ring, while using only a 1/2" square of your fixture space.

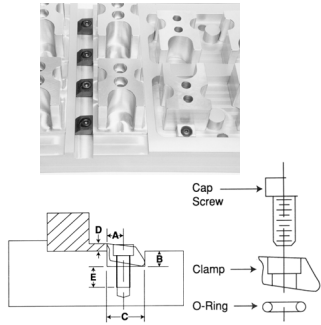


FEATURES:

- Extremely low bite
- Positive down force
- High resistance to rip-out
- Simple, sturdy, high quality design and components

Description	A	B	C	D*	Clamp Width	Screw Size	Max Holding Force (lbs.)	Torque (in./lbs.)	Total Throw	Pkg Qty	Part Number	Price Each
Tool Steel, Knife Edge	.150	.140	.375	.075	.375	4-40	650	16	.0075	8	MITEE-26000	\$70.87
Tool Steel, Blunt Edge	.150	.140	.375	.075	.375	4-40	650	16	.0075	8	MITEE-26010	\$70.87
Brass, Blunt Edge	.150	.140	.375	.075	.375	4-40	200	5	.0075	8	MITEE-26015	\$70.87
Tool Steel, Knife Edge	.200	.187	.500	.100	.500	8-32	1500	50	.016	8	MITEE-26020	\$75.24
Tool Steel, Blunt Edge	.200	.187	.500	.100	.500	8-32	1500	50	.016	8	MITEE-26030	\$75.24
Brass, Blunt Edge	.200	.187	.500	.100	.500	8-32	400	25	.016	8	MITEE-26040	\$75.24
Tool Steel, Knife Edge	.300	.280	.750	.150	.750	1/4-20	3600	200	.024	6	MITEE-26050	\$72.96
Tool Steel, Blunt Edge	.300	.280	.750	.150	.750	1/4-20	3600	200	.024	6	MITEE-26060	\$72.96
Brass, Blunt Edge	.300	.280	.750	.150	.750	1/4-20	950	50	.024	6	MITEE-26065	\$72.96
Tool Steel, Knife Edge	.400	.250	1.00	.250	1.00	3/8-16	6000	360	.050	4	MITEE-26070	\$78.90
Tool Steel, Blunt Edge	.400	.250	1.00	.250	1.00	3/8-16	6000	360	.050	4	MITEE-26075	\$78.90
Tool Steel, Knife Edge	.600	.375	1.50	.375	1.50	1/2-13	12000	1800	.075	2	MITEE-26080	\$69.02
Tool Steel, Blunt Edge	.600	.375	1.50	.375	1.50	1/2-13	12000	1800	.075	2	MITEE-26085	\$69.02

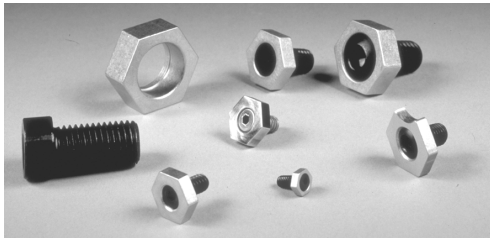
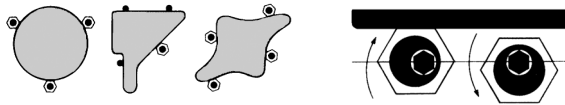
* "D" is clamp height



FIXTURE CLAMPS

The Cam Action Mitee-Bite Fixture Clamp is made up of two simple components: a hardened steel socket cap screw with an offset head and a hexagonal washer.

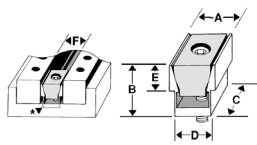
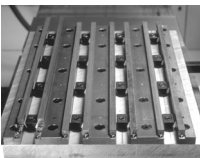
- Low profile makes computer programming easier.
- Small size allows more parts per load.



Screw Size	Thread Length	Hex Size	Hex Height	Drill & Tap Dist.†	Max Hold. Force	Total Throw	Pkg Qty	Part Number	Pkg. Price
8-32	3/8	5/16	.110	.150	205 lbs.	.030	10	MITEE-10202	\$48.17
10-32	3/8	1/2	.160	.250	350 lbs.	.040	10	MITEE-10207	\$50.68
1/4-20	1/2	5/8	.190	.308	800 lbs.	.040	10	MITEE-10204	\$50.68
5/16-24	1/2	13/16	.190	.400	750 lbs.	.040	12	MITEE-10205	\$63.51
5/16-18	1/2	13/16	.190	.400	750 lbs.	.040	12	MITEE-10201	\$63.51
3/8-16	3/4	13/16	.250	.400	2000 lbs.	.050	10	MITEE-10206	\$58.43
1/2-13	1	1	.375	.500	4000 lbs.	.100	8	MITEE-10208	\$63.51
5/8-11	1 1/4	1 3/16	.500	.590	6000 lbs.	.100	4	MITEE-10210	\$48.17

UNIFORM CLAMP

This compact, economical workholding device enables you to fixture more parts on the machine table. This simple, efficient method of clamping workpieces will decrease your set up time and increase your profits and production.

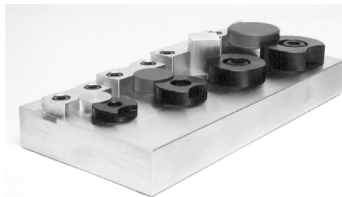
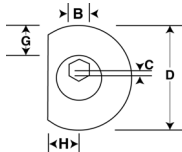


Thread Size	Hex Key Size	Max. Spread	Hold. Force	Pkg Qty	A	B	C	D	E	F	Part Number	Price Per Pkg
2-56	5/64	.265	200 lbs.	6	.240	.27	.320	.210	.140	.250	MITEE-60250	\$59.61
4-40	3/32	.395	310lbs.	6	.360	.38	.470	.310	.185	.375	MITEE-60375	\$59.61
8-32	9/64	.540	500lbs.	8	.485	.57	.625	.410	.220	.500	MITEE-60500	\$59.61
1/4-20	3/16	.800	1500lbs.	6	.735	.77	.940	.635	.375	.750	MITEE-60750	\$60.71
5/16-18	1/4	1.060	2000lbs.	4	.980	1.02	1.250	.820	.500	1.000	MITEE-61000	\$59.61
1/2-13	3/8	1.590	3500lbs.	2	1.470	1.52	1.875	1.215	.750	1.500	MITEE-61500	\$99.28
5/8-11	1/2	2.100	6000lbs.	2	1.960	2.03	2.500	1.625	1.00	2.000	MITEE-62000	\$150.53

MACHINABLE FIXTURE CLAMPS

These clamps with the machinable steel washers provide more flexibility for holding round or unusually shaped parts. Parts can be held directly to the fixture plate surface or elevated for through drilling. A special screw is provided with each package to hold the washer in the proper place during machining.

- Low Profile
- Made of mild steel for machinability
- One machining screw included with each package



A	B	C	D	E	F	G*	H†	Max. Holding Force	Pkg Qty	Part Number	Price Each
1/4-20	1/8	.040	.980	.250	.470	.250	.308	800 lbs.	4	MITEE-10504	\$41.52
3/8-16	3/16	.050	1.23	.350	.710	.275	.400	2000 lbs.	4	MITEE-10506	\$48.30
1/2-13	5/16	.100	1.48	.450	.900	.300	.500	4000 lbs.	4	MITEE-10508	\$56.72
5/8-11	3/8	.100	1.73	.550	1.125	.350	.590	6000 lbs.	4	MITEE-10510	\$69.83

* "G" is the amount of machinable stock. † "H" is the distance from edge of workpiece to drill & tap hole.

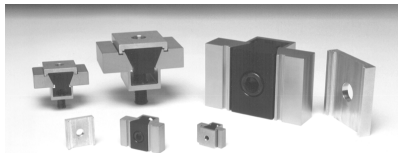


Call Us Or Visit Our Website For Our Complete Selection!

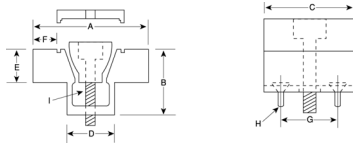
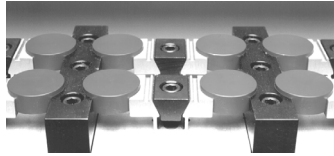
CLAMPING PRODUCTS

MACHINABLE UNIFORM FORCE CLAMPS

Full Line Available!
Please call for more information.



Now you can hold those round and unusually shaped parts with ease. This compact method of workholding will allow more parts per load at a lower price than vise soft jaws. This compact Uniform Force Clamp is available with extra material on the clamping jaws so it can be machined to conform to the shape of your workpiece. A unique locking plate is provided to make the clamp rigid while machining the jaws to your specifications, without vibration.



Description	A*	B	C	D	E	F†	G	H**	I	Part Number	Price Each
Clamp Assembly W/Plate	1.125	.50	.62	.420	.25	.18	.400	2-56	8-32	MITEE-60050	\$20.19
Clamp Assembly, W/Out Plate										MITEE-60055	\$15.87
Clamp Assembly W/Plate	1.50	.75	.94	.632	.37	.26	.625	6-32	1/4-20	MITEE-60075	\$21.38
Clamp Assembly, W/Out Plate										MITEE-60080	\$16.44
Clamp Assembly W/Plate	2.00	1.0	1.25	.820	.50	.39	.812	6-32	5/16-18	MITEE-60100	\$29.50
Clamp Assembly, W/Out Plate										MITEE-60105	\$23.66
Clamp Assembly W/Plate	3.00	1.5	1.87	1.215	.75	.62	1.20	10-32	1/2-13	MITEE-60150	\$81.84
Clamp Assembly, W/Out Plate										MITEE-60153	\$74.20
Clamp Assembly W/Plate	4.00	2.0	2.5	1.625	1.0	.80	1.625	1/4-20	5/8-11	MITEE-60200	\$134.14
Clamp Assembly, W/Out Plate										MITEE-60203	\$121.13

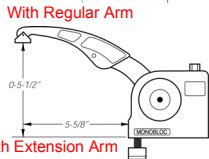
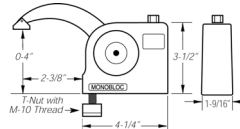
*A: The distance needed between workpieces for clamp clearance, drill and tap mounting holes on the center of "A" dimension.
†F: The amount of machinable stock on jaws. **H: Mounting Screws included.

STANDARD DUTY MONO-BLOC CLAMPS

Ideal for Bridgeport-Type Mills!



One of the fastest and strongest milling clamps available. Modular design: Start with two clamps and build up with risers. Easy set up and tear down, making them ideal for odd-shaped parts and short cycle times. Worm-and-gear design ensures that the clamp will not loosen with use. Up to 12" clamping height with riser blocks.



T-Slot Size	Part Number	Price
9/16"	MITEE-25727	\$772.00
5/8"	MITEE-25729	\$772.00
3/4"	MITEE-25731	\$772.00

Description	Part Number	Price Each
2 Standard-Duty Mono-Blocs w/ 2 5/8" Arm (Includes T-wrench)	MITEE-25705	\$294.15
2 Standard-Duty Riser Blocks	MITEE-25710	\$89.55
1 Extension Arm	MITEE-25540	\$72.30
1 Standard-Duty T-Wrench	MITEE-25720	\$24.55
2 M-10x35mm Screws	MITEE-25730	\$9.85
2 M-10x40mm Screws	MITEE-25733	\$9.85

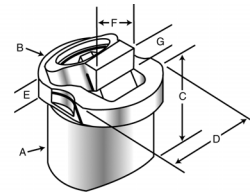
Regular Arm: Clamping Range 0-4". 2400 lbs force
Extension Arm: Clamping Range 0-5 1/2". 1300 lbs force

Kit includes high-impact plastic storage/ carrying case with room to store tools and T-nuts for other size mills.

DYNA-FORCE CLAMP



The majority of the Dyna-Force Clamp is below the surface of the fixture which provides excellent clamp support and makes for a very low profile. The clamp jaw, which is relief cut for maximum contact with the workpiece, slides on an angle for positive downforce. Clamp jaw is available with smooth or serrated faces.



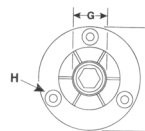
A*	B	C	D	E	F	Min. G	Recom. G	Max G	Clamp Travel	Drive Screw	Key Size	Clamp Jaw & Hardness	Part Number	Price
20.00	24.90	19.00	19.90	4.50	13.50	3.25	5.00	6.75	2.0	6mm	5mm	smooth 34RC	MITEE-28314	\$70.49
												serrated 44RC	MITEE-28318	\$76.33
25.00	29.90	24.00	24.90	5.00	15.00	4.50	6.50	8.35	2.2	8mm	6mm	smooth 34RC	MITEE-28320	\$73.39
												serrated 44RC	MITEE-28322	\$79.28
30.00	37.90	29.00	29.90	7.00	20.00	4.50	7.50	10.75	3.8	10mm	8mm	smooth 34RC	MITEE-28324	\$111.58
												serrated 44RC	MITEE-28328	\$120.37

* "A" is body diameter

† Smooth jaw only will have relief cut.

ID XPANSION CLAMP

Heat Treated Cone & Screw For Long Life!



A	B	C	D	E	F	G†	H*	I	Part Number	Price Each
.86	.63	.59	.23	1.170	.49	.28	6-32 on .825 BHC	8-32	MITEE-31050	\$34.87
.98	.75	.59	.23	1.240	.56	.48	6-32 on .910 BHC	1/4-20	MITEE-31100	\$34.87
.98	.75	.59	.23	1.476	.79	.53	6-32 on 1.140 BHC	5/16-18	MITEE-31150	\$37.10
1.13	.88	.69	.25	1.968	1.06	.79	8-32 on 1.550 BHC	3/8-16	MITEE-31200	\$48.26
1.25	1.0	.81	.25	2.205	1.39	1.00	8-32 on 1.790 BHC	1/2-13	MITEE-31250	\$59.52
1.56	1.25	1.06	.31	2.736	1.65	1.35	10-32 on 2.200 BHC	5/8-11	MITEE-31300	\$76.29
1.56	1.25	1.06	.31	2.972	2.03	1.35	10-32 on 2.515 BHC	5/8-11	MITEE-31350	\$83.70
1.79	1.48	1.27	.31	4.232	3.06	1.35	1/4-20 on 3.646 BHC	5/8-11	MITEE-31400	\$133.1

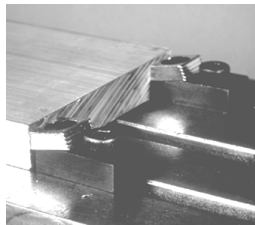
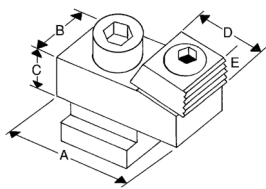
G† - Minimum diameter "F" dimension can be machined H* - (3) Mounting Screws

The ideal way to hold multiple parts on an inside diameter for machining on your VMC or HMC. Ideal for secondary operations and easily machined to size on a lathe or mill, allowing for more parts per workcube or fixture.

Call Us Today For All Of Your Machine Tool Needs!

T-SLOT TOE CLAMP

A low profile cam action clamp with positive downforce. Clamp is mounted in the T-slots of machine tables by sliding the clamp to the workpiece and tightening the locking screw.
Total Distance of Movement - .100



T-Slot Size	A	B	C	D	E	Part Number	Price Each
9/16	1.94	1.12	.62	1.00	.38	MITEE-24128	\$38.19
5/8	1.94	1.12	.62	1.00	.38	MITEE-24148	\$38.19
11/16	1.94	1.12	.62	1.00	.38	MITEE-24168	\$38.19
3/4	1.94	1.12	.62	1.00	.38	MITEE-24188	\$40.42



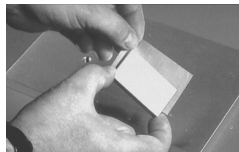
MITEE-GRIP

The Invisible Clamp!

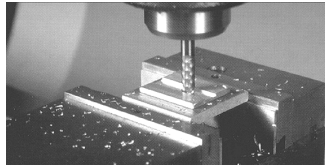


Mitee-Grip™ is a heat activated wax base compound embedded in precision paper, coated on nylon mesh or in a stick form. This holding media maintains parallelism on precision parts. Mitee-Grip™ is very useful when machining thin or hard to hold parts and allows machining on five sides of a workpiece without using a clamp.

From This...



To This In Minutes!!



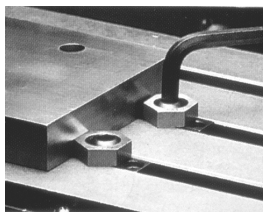
FEATURES:

- Paper product is excellent for holding smooth flat parts and maintaining parallelism.
- The mesh product captures additional wax material in the web and aids in holding irregularly shaped parts.
- Typically additional holding force can be attained with this material.



Description	Part Number	Price Each
12"x5" Paper Roll	MITEE-10240	\$32.30
12"x25" Paper Roll	MITEE-10245	\$120.98
10"x5" Mesh Roll	MITEE-10250	\$39.38
10"x25" Mesh Roll	MITEE-10252	\$141.12
Compound - 1 Stick	MITEE-10230	\$22.18
Compound - 3 Sticks	MITEE-10235	\$58.47

MITEE-BITE T-SLOT KITS



- Locks in machine T-slot for low profile clamping
 - Fast set-ups possible right on the machine table
 - Brass hex follows contour of unusually shaped parts
- All clamps available in metric



CONTENTS:

- 4 Mitee-Bite T-nuts
- 6 Mitee-Bite Cam Clamps
- 2 Hex Keys

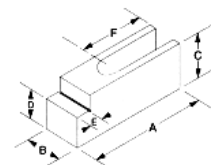
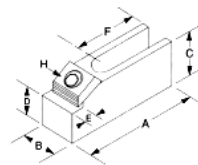
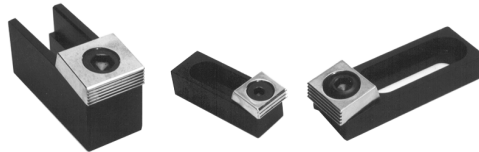


Table Slot	Size & Pitch	Thread Length	Hex Size	Hex Height	Part Number	Price Each
3/8	1/4-20	1/2	5/8	3/16	MITEE-10640	\$97.38
7/16	5/16-18	1/2	13/16	3/16	MITEE-10641	\$97.38
1/2	3/8-16	3/4	13/16	1/4	MITEE-10642	\$97.38
9/16	3/8-16	3/4	13/16	1/4	MITEE-10643	\$97.38
5/8	1/2-13	1	1	3/8	MITEE-10644	\$97.38
11/16	1/2-13	1	1	3/8	MITEE-10646	\$97.38

MULTI-FIXTURE CLAMPS AND STOPS

The MITEE-BITE Multi-Fixture Clamp offers increased versatility through its unique riser clamp design.

- Provides flexible set ups for hard to hold parts
- Works in both plates with tapped hole layouts or T-slot configurations.
- Can be mounted vertically or horizontally.
- Stops locate workpiece for repeat positioning.
- Larger sizes are ideal for mold shop applications.
- Tapered mounting slot prevents movement when clamping pressure is applied.
- Steps, as well as end faces of flat stops, are precision ground.



Item	A	B	C	D +.0000 -.0005	E	F	G	H Cam Screw	Mounting Screw	Slot	Part Number	Price Each
Clamp	2.5	0.75	0.62	0.460	0.31	0.83	0.53	MB-6	5/16	Closed	MITEE-23140	\$46.93
Stop	2.5	0.75	0.75	0.460	0.31	1.11	0.53	NA	5/16	Closed	MITEE-23180	\$39.05
Clamp	3.75	1.12	0.62	0.480	0.37	1.68	0.50	MB-8	1/2	Closed	MITEE-23150	\$51.82
Stop	3.75	1.12	0.87	0.480	0.37	1.68	0.50	NA	1/2	Closed	MITEE-23200	\$46.93
Clamp	2.16	0.75	0.62	NA	NA	0.83	0.53	MB-6	5/16	Closed	MITEE-23145	\$43.65
Stop	2.2	0.75	0.75	NA	NA	1.11	0.53	NA	5/16	Closed	MITEE-23148	\$32.78



T-SLOT CLAMPING KIT



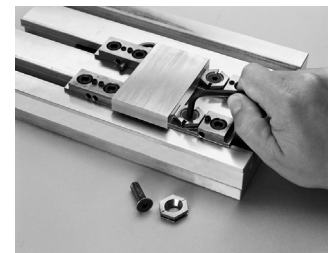
- Quick and easy setting with hex key wrench
- For 5/8" T-slot
- Crafted from hardened tool steel
- Kit Includes: 4 T-nuts, 6 clamps, 2 hex keys and fitted case

Clamping Kit
Part # A-3900-0318
\$62.00 each

MINILOCK CAM ACTION WORKHOLDING SYSTEM



This product employs the same AngLock concept as the world famous Kurt vises. When a quarter turn is applied to the screw, the split clamp jaw is forced both laterally and down, precisely clamping the part and preventing part lift at the same time.



Thread	Hex Dia x Thickness	Pkg Qty	Part Number	Price Each
1/4-20 x .625"	.688 x .188	6	KURT-MT4	\$159.00
5/16-18 x .750"	.875 x .250	6	KURT-MT5	\$138.35
3/8-16 x 1.00"	.938 x .312	6	KURT-MT6	\$189.00
1/2-13 x 1.25"	1.125 x .375	6	KURT-MT8	\$234.75

Call Us Or Visit Our Website For Our Complete Selection!

LATHE CHUCKS
LIVE CENTERS

VISE JAWS
VISE ACCESSORIES

STRAIGHT SHANK
COLLET HOLDERS

TAP HOLDERS
DRILL CHUCKS

CARBIDE INSERTS
THREADING/GROOVING

CUTTING TOOLS
MACHINERY

PRECISION TOOLS
DEBURRING

COOLANT/FLUIDS
TOOL STORAGE