

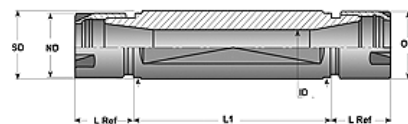
COLLET EXTENSIONS/STRAIGHT SHANK HOLDERS

DOUBLE ENDED STRAIGHT SHANK HOLDERS



ER Series Collet Extensions

- Ideal for Swiss Machines
- Available in Inch and Metric shank sizes
- Comes complete with collet nuts (wrench sold separately)

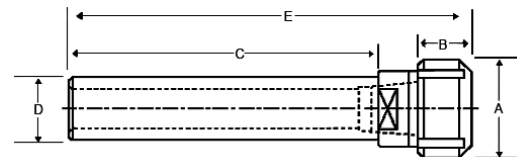


| Collet Series | Shank Dia. (SD) | Shank Length (L1) | OAL (mm) | Nut Dia (ND) | Nut Length | Part Number | Price Each | Thread of Nut | Collet Nut Part Number | Wrench Part Number |
|---------------|-----------------|-------------------|----------|--------------|------------|----------------|-----------------|---------------|------------------------|--------------------|
| ER08 | 5/8" | 15mm | 45 | 0.48" | 0.44" | D-E08F06-15N-R | \$146.50 | M10X.75 | CN-EK08MN-K | WR-ER08MN |
| | 5/8" | 25mm | 55 | 0.48" | 0.44" | D-E08F06-25N-R | \$150.25 | M10X.75 | CN-EK08MN-V | WR-ER08MN |
| ER11 | 16mm | 40mm | 79 | 0.63" | 0.44" | D-E11F16M40N-R | \$130.75 | M13X.75 | CN-EK11MN-K | WR-ER11MN |
| | 16mm | 50mm | 90 | 0.63" | 0.44" | D-E11F16M50N-R | \$152.88 | M13X.75 | CN-EK11MN-K | WR-ER11MN |
| | 3/4" | 25mm | 65 | 0.63" | 0.44" | D-E11F07-25N-R | \$126.25 | M13X.75 | CN-EK11MN-K | WR-ER11MN |
| | 3/4" | 40mm | 80 | 0.63" | 0.44" | D-E11F07-40N-R | \$126.25 | M13X.75 | CN-EK11MN-K | WR-ER11MN |
| | 3/4" | 70mm | 110 | 0.63" | 0.44" | D-E11F07-70N-R | \$126.25 | M13X.75 | CN-EK11MN-K | WR-ER11MN |
| | 3/4" | 90mm | 130 | 0.63" | 0.44" | D-E11F07-90N-R | \$126.25 | M13X.75 | CN-EK11MN-K | WR-ER11MN |
| | 20mm | 30mm | 70 | 0.63" | 0.44" | D-E11F20M30N-R | \$143.50 | M13X.75 | CN-EK11MN-K | WR-ER11MN |
| | 20mm | 50mm | 90 | 0.63" | 0.44" | D-E11F20M50N-R | \$145.00 | M13X.75 | CN-EK11MN-K | WR-ER11MN |
| | 20mm | 70mm | 109 | 0.63" | 0.44" | D-E11F20M70N-R | \$153.00 | M13X.75 | CN-EK11MN-K | WR-ER11MN |
| | 20mm | 90mm | 129 | 0.63" | 0.44" | D-E11F20M90N-R | \$153.00 | M13X.75 | CN-EK11MN-K | WR-ER11MN |
| ER16 | 3/4" | 55mm | 107 | 0.87" | 0.67" | D-E16F07-55N-R | \$152.50 | M19X1 | CN-EK16MN-K | WR-ER16MN |
| | 20mm | 30mm | 85 | 0.87" | 0.67" | D-E16F20M30N-R | \$152.50 | M19X1 | CN-EK16MN-K | WR-ER16MN |
| | 20mm | 55mm | 107 | 0.87" | 0.67" | D-E16F20M55N-R | \$160.75 | M19X1 | CN-EK16MN-K | WR-ER16MN |
| | 22mm | 55mm | 111 | 0.87" | 0.67" | D-E16F22M55N-R | \$153.00 | M19X1 | CN-EK16MN-K | WR-ER16MN |
| | 22mm | 75mm | 131 | 0.87" | 0.67" | D-E16F22M75N-R | \$155.50 | M19X1 | CN-EK16MN-K | WR-ER16MN |
| | 25mm | 36mm | 92 | 0.87" | 0.67" | D-E16F25M36N-R | \$153.00 | M19X1 | CN-EK16MN-K | WR-ER16MN |
| | 25mm | 62mm | 118 | 0.87" | 0.67" | D-E16F25M62N-R | \$155.50 | M19X1 | CN-EK16MN-K | WR-ER16MN |
| | 1" | 30mm | 85 | 0.87" | 0.67" | D-E16F10-30N-R | \$155.50 | M19X1 | CN-EK16MN-K | WR-ER16MN |
| ER20 | 1" | 62mm | 118 | 0.87" | 0.67" | D-E16F10-62N-R | \$155.50 | M19X1 | CN-EK16MN-K | WR-ER16MN |
| | 25mm | 36mm | 92 | 1.10" | 0.75" | D-E20F25M36N-R | \$129.00 | M24X1 | CN-EK20MN-K | WR-ER20MN |
| | 25mm | 66mm | 122 | 1.10" | 0.75" | D-E20F25M66N-R | \$129.00 | M24X1 | CN-EK20MN-K | WR-ER20MN |
| | 32mm | 55mm | 111 | 1.10" | 0.75" | D-E20F32M55N-R | \$139.00 | M24X1 | CN-EK20MN-K | WR-ER20MN |
| ER20 | 32mm | 75mm | 131 | 1.10" | 0.75" | D-E20F32M75N-R | \$139.00 | M24X1 | CN-EK20MN-K | WR-ER20MN |

TG STRAIGHT SHANK HOLDERS

TG Series Collet Extensions

- Crafted from heat treated alloy steel
- Available with round or flattened shank
- Supplied with collet nut



| Collet Series | Shank D | C | OAL | Nut Dia | Length of Nut | Type of Nut | Shank Type | Part Number | Price Each | Collet Nut Part Number | Wrench Part Number |
|---------------|---------|------|-------|---------|---------------|-------------|------------|----------------|-----------------|------------------------|--------------------|
| TG 75 | 0.750 | 2.75 | 5.79 | 2.10 | 2.44 | HEX | Flat | S-T75F07-27H-K | \$206.27 | CN-TG75-K | WR-TG75-K |
| TG 75 | 1.000 | 2.75 | 5.79 | 2.10 | 2.44 | HEX | Flat | S-T75F10-27H-K | \$215.42 | CN-TG75-K | WR-TG75-K |
| TG 75 | 1.250 | 3.25 | 6.30 | 2.10 | 2.44 | HEX | Flat | S-T75F12-32H-K | \$223.17 | CN-TG75-K | WR-TG75-K |
| TG 75 | 1.250 | 6.00 | 8.50 | 2.10 | 2.44 | HEX | Round | S-T75R12-60H-K | \$247.50 | CN-TG75-K | WR-TG75-K |
| TG 75 | 1.500 | 3.37 | 6.42 | 2.10 | 2.44 | HEX | Flat | S-T75F15-33H-K | \$229.86 | CN-TG75-K | WR-TG75-K |
| TG 75 | 1.500 | 6.00 | 7.80 | 2.10 | 2.44 | HEX | Round | S-T75R15-60H-K | \$258.50 | CN-TG75-K | WR-TG75-K |
| TG 75 | 1.750 | 3.50 | 6.54 | 2.10 | 2.44 | HEX | Flat | S-T75F17-35H-K | \$231.62 | CN-TG75-K | WR-TG75-K |
| TG 75 | 2.000 | 4.00 | 7.05 | 2.10 | 2.44 | HEX | Flat | S-T75F20-40H-K | \$237.95 | CN-TG75-K | WR-TG75-K |
| TG 100 | 0.750 | 2.75 | 5.98 | 2.44 | 1.41 | HEX | Flat | S-T10F07-27H-K | \$206.27 | CN-TG100-K | WR-TG100-K |
| TG 100 | 1.000 | 2.75 | 5.98 | 2.44 | 1.41 | HEX | Flat | S-T10F10-27H-K | \$215.42 | CN-TG100-K | WR-TG100-K |
| TG 100 | 1.250 | 3.25 | 6.50 | 2.44 | 1.41 | HEX | Flat | S-T10F12-32H-K | \$223.17 | CN-TG100-K | WR-TG100-K |
| TG 100 | 1.250 | 6.00 | 9.30 | 2.44 | 1.41 | HEX | Round | S-T10R12-60H-K | \$247.50 | CN-TG100-K | WR-TG100-K |
| TG 100 | 1.500 | 3.37 | 6.61 | 2.44 | 1.41 | HEX | Flat | S-T10F15-33H-K | \$229.86 | CN-TG100-K | WR-TG100-K |
| TG 100 | 1.500 | 6.00 | 9.30 | 2.44 | 1.41 | HEX | Round | S-T10R15-60H-K | \$258.50 | CN-TG100-K | WR-TG100-K |
| TG 100 | 1.750 | 3.50 | 6.73 | 2.44 | 1.41 | HEX | Flat | S-T10F17-35H-K | \$231.62 | CN-TG100-K | WR-TG100-K |
| TG 100 | 1.750 | 6.00 | 8.20 | 2.44 | 1.41 | HEX | Round | S-T10R17-60H-K | \$269.50 | CN-TG100-K | WR-TG100-K |
| TG 100 | 2.000 | 4.00 | 7.24 | 2.44 | 1.41 | HEX | Flat | S-T10F20-40H-K | \$237.95 | CN-TG100-K | WR-TG100-K |
| TG 100 | 2.000 | 6.00 | 8.20 | 2.44 | 1.41 | HEX | Round | S-T10R20-60H-K | \$280.50 | CN-TG100-K | WR-TG100-K |
| TG 150 | 1.750 | 8.00 | 11.70 | - | - | HEX | Round | S-T15R17-80H-K | \$297.00 | CN-TG150-K | WR-TG150-K |
| TG 150 | 2.000 | 8.00 | 11.70 | - | - | HEX | Round | S-T15R20-80H-K | \$297.00 | CN-TG150-K | WR-TG150-K |

Call Us Today For All Of Your Machine Tool Needs!