

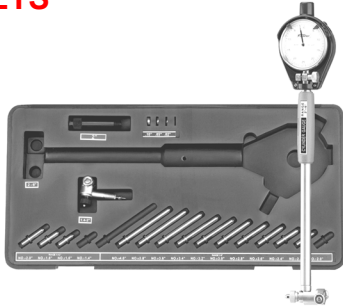
# BORE GAGES

C

## DIAL BORE GAGE SETS



- Easy-to-read
- Carbide anvils
- Graduation: .0005"
- Chrome plated handle
- Insulated grip
- Includes extension holder and fitted case
- Complete in shop hardened case



| Range   | Graduation | Part Number    | Price    |
|---------|------------|----------------|----------|
| .7-1.5" | 0.0005"    | FOW-52-646-100 | \$117.00 |
| 2-6"    | 0.0005"    | FOW-52-646-300 | \$110.00 |
| 1.4-6"  | 0.0005"    | FOW-52-646-400 | \$140.00 |

## DIAL BORE GAGE SETS



- For close tolerance measurements of holes taper and roundness
- Gages supplied with AGD Group II dial indicator
- Easy setting with micrometers or ring gage
- 0.0005" graduations on dial indicator
- Self centering



| Range      | Probe Depth | No. of Anvils | Part Number | Price    |
|------------|-------------|---------------|-------------|----------|
| 0.4 - 0.7" | 4"          | .11           | A-4400-0062 | \$115.00 |
| 0.7 - 1.5" | 6"          | 9             | A-4400-0063 | \$95.00  |
| 1.4 - 2.4" | 6"          | 6             | A-4400-0064 | \$95.00  |
| 2.0 - 6.0" | 6"          | 11            | A-4400-0007 | \$89.00  |
| 1.4 - 6.0" | 6"          | 17            | A-4400-1406 | \$140.00 |

## DIAL BORE GAGE



- Resolution: .0005"
- 2-point contact
- Non-slip insulating grip
- Carbide contacts for extended wear
- Aluminum case with gage and accessory cutouts
- Gage chart for quick and easy anvil selection



| Measuring Range | Probe Depth | Contacts | Extension | Part Number | Price    |
|-----------------|-------------|----------|-----------|-------------|----------|
| 0.7-1.5"        | 6"          | 2        | -         | STR-12456   | \$249.00 |
| 1.4-2.4"        | 6"          | 4        | -         | STR-12457   | \$249.00 |
| 2-6"            | 6"          | 4        | (1x) 2    | STR-12458   | \$278.00 |

## DIGITAL BORE GAGES



- Used for precise bore measurements, this gage is the perfect instrument for easy set-ups and gauging
- Uses a digital indicator for accurate results
- Fast and easy inch/metric conversion, no need for revolution counters
- Zero-setting function and RS 232 output
- Rapid display and hold function
- Includes 11 anvils



| Grad.  | Range | Part Number | Price    |
|--------|-------|-------------|----------|
| .0005" | 2-6"  | PH2-900-274 | \$140.00 |
| .0001" | 2-6"  | PH2-900-284 | \$175.00 |

## BORE GAGE COMBO SET

- Bore Gage Features:**
- Range: 1.4"-6"/35mm-150mm
  - Carbide anvils
  - Easily adjustable
  - Self-centering
  - Includes 2" contact extension



- Indicator Features:**
- Dual reading inch/metric electronic indicator.
  - Bar graph and numeric digital display
  - Resolution: .00005"/.001mm
  - Preset with recall
  - ABS/INC measurement
  - Min/Max/TIR

| Description                     | Part Number    | Price    |
|---------------------------------|----------------|----------|
| 1.4-6" Electronic Bore Gage Set | FOW-54-646-401 | \$255.00 |

## PRECISION RADIUS GAGE SETS



- Radius gage set in a plastic case
- Five different gaging surfaces on each gage for both convex and concave radius
- Made of satin finish rust and stain resistant stainless steel
- Includes handy gage holders



| No. Of Pieces | Description                              | Part Number | Price   |
|---------------|--|-------------|---------|
| 25            | 1/64"-17/64 x 64ths & 9/32"-1/2" x 32nds | A-4901-0040 | \$41.00 |
| 26            | .5-13mm by 0.5mm                         | A-4901-0047 | \$38.00 |

## TELESCOPING HOLE GAGES

- FEATURES:**
- 6 piece set.
  - Range: 5/16" to 6"
  - Double action rigid handle with self-centering feature for quick checking of inside measurements.
  - Completely assembled with handle.
  - Constant spring tension for uniform feel.



| Brand  | Part Number    | Price    |
|--------|----------------|----------|
| FOWLER | FOW-52-470-006 | \$101.80 |
| PEC    | PEC-3S-6       | \$86.53  |

## SMALL HOLE GAGES



- FEATURES:**
- Size adjustment by knurled knob
  - Gaging surface is fully hardened
  - Satin chrome finish
  - Extra long for gaging deep holes and slots
  - Final size is obtained by measuring over the contact points with a micrometer
  - Supplied in fitted case



| Range       | Part Number | Price   |
|-------------|-------------|---------|
| .125"-.500" | PEC-4S-4    | \$50.57 |

Call Us Or Visit Our Website For Our Complete Selection!

LATHE CHUCKS  
LIVE CENTERS

WISE JAWS  
WISE ACCESSORIES

STRAIGHT SHANK  
COLLET HOLDERS

TAP HOLDERS  
DRILL CHUCKS

CARBIDE INSERTS  
THREADING/GROOVING

CUTTING TOOLS  
MACHINERY

PRECISION TOOLS  
DEBURRING

COOLANT/FLUIDS  
TOOL STORAGE

CHUCK JAWS  
LATHE WORKHOLDING

MACHINE VISES  
VISE JAWS

RETENTION KNOBS  
ER, DA, TG COLLETS

TOOLHOLDERS  
TAP HOLDERS

INDEXABLE DRILLS  
TURNING & BORING

ENDMILLS, DRILLS  
TAPS & REAMERS

ABRASIVES  
MEASURING TOOLS

MRO & SAFETY  
FLAT STOCK/DRILL ROD

## DIAL TEST INDICATORS

### DIAL TEST INDICATORS

With Dovetail Mounts



- Series 708 reads to .0001"
- Large 1-3/8 diameter dial
- Angled head for better reading position
- Precision gear-driven design with smooth, jeweled movement
- Three dovetail positioning mounts provide added versatility
- 13/16" long carbide contacts are frictionally adjustable and replaceable
- Dial color options: White or Black
- **Attachments included:** dovetail body clamp, tool post holder, swivel post snug w/ dovetail indicator clamp and snug/rod unit



A

| Description                 | Range | Dial Reading | Part Number | Price    |
|-----------------------------|-------|--------------|-------------|----------|
| Black Dial, w/ attachments  | .010" | 0-5-0        | STR-64608   | \$384.00 |
| White Dial, w/ attachments  | .010" | 0-5-0        | STR-64217   | \$384.00 |
| White Dial, w/o attachments | .020" | 0-5-0        | STR-64213   | \$366.00 |
| White Dial, w/ attachments  | .020" | 0-5-0        | STR-64218   | \$448.00 |

### DIAL TEST INDICATORS

With Dovetail Mounts



All Fowler Test Indicators Include:

- Bi-directional constant clockwise rotation
- Automatic reversal
- 3 dovetail mounts
- Jeweled movement
- 2 dovetail clamps
- Universal holder
- Complete in a molded case!

Range: .030"  
Dial reading: 0-15-0



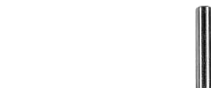
| Grad.  | Dial Dia. | Point Length | Dial Color | Part Number    | Price   |
|--------|-----------|--------------|------------|----------------|---------|
| 0.001" | 1"        | 1/2"         | White      | FOW-52-562-774 | \$80.00 |
| .0005" | 1-1/2"    | 1/2"         | White      | FOW-52-562-776 | \$80.00 |
| .0005" | 1-1/2"    | 1/2"         | Black      | FOW-52-562-780 | \$80.00 |

### TEST INDICATOR ACCESSORIES

- Accessories for Starrett Series 708 and 811 test indicators
- Replacement attachments
- Additional accessories also available



Dovetail Body Clamp



Tool Post Holder



Swivel Post Snug w/  
Dovetail Indicator Clamp



Indicator Attachment



Snug and Rod Unit



Indicator Axial Support

| Description                                  | Part Number | Price    |
|--|-------------|----------|
| Dovetail Body Clamp                          | STR-72441   | \$23.50  |
| Tool Post Holder                             | STR-71361   | \$23.50  |
| Swivel Post Snug w/ Dovetail Indicator Clamp | STR-72440   | \$23.50  |
| Snug and Rod Unit                            | STR-72442   | \$29.00  |
| Indicator Axial Support                      | STR-65101   | \$101.00 |
| Indicator Attachment-Dovetail Style          | STR-68713   | \$195.00 |

### TEST INDICATOR KIT

- 0-0.03" Dial Test Indicator set with .0005" Graduation
- Three dovetail positioning mounts work with most existing test indicator accessories
- Precision design with smooth jeweled movement
- Contact point reverses automatically
- Frictionally adjustable contacts.
- Meets or exceeds ANSI/ASME specifications
- High contrast easy to read dial
- Narrow body for in reach ability
- Interchangeable with 3808AC
- Includes 2 contact points, 2 dovetail clamps, 1 swivel post holder, 1 tool post holder and 1 contact wrench in a fitted case



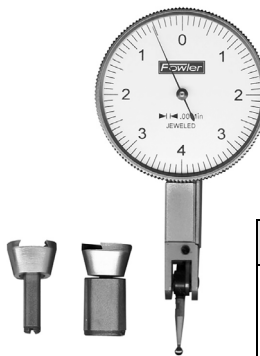
Test Indicator Kit  
Part #A-4409-1208

\$72.00

### TEST INDICATORS



- Total Range: .008"
- Dial reading: 0-4 -0
- Jewelled movement
- Bi-directional constant clockwise rotation
- Easy-to-read tilted dial
- Auto-reverse
- 0.0001" graduation
- 1/2" point length



| Dial Dia. | Dial Color | Part Number    | Price   |
|-----------|------------|----------------|---------|
| 1"        | White      | FOW-52-563-770 | \$90.00 |
| 1"        | Black      | FOW-52-563-771 | \$90.00 |
| 1-1/2"    | White      | FOW-52-563-777 | \$90.00 |
| 1-1/2"    | Black      | FOW-52-563-772 | \$90.00 |

### DIAL TEST INDICATOR

- Precision pivot bearing
- Dial reading 0-15-0
- 0.098" contact point
- Satin chrome finish
- Jeweled movements
- Dovetail mount top, back & front
- Includes case & 2 stems



| Range   | Graduation | Brand     | Part Number | Price   |
|---------|------------|-----------|-------------|---------|
| 0-0.03" | 0.0005"    | IMPORT    | IND-25010L  | \$25.34 |
| 0-0.03" | 0.0005"    | ISQ       | A-4400-0010 | \$41.00 |
| 0-0.03" | 0-0005"    | ISQ Ultra | A-4409-1201 | \$47.00 |

### DIAL TEST INDICATORS



- Range: 0.060"
- Jeweled movement
- Revolution counter
- Easy-to-read tilted dial
- Automatic reversal
- 210° Swivel arc
- Tungsten carbide points: .040", .080" and .120" diameter
- 5/32" stem



Twice The Range Of  
Most Indicators!

| Dial Dia. | Grad.  | Part Number    | Price   |
|-----------|--------|----------------|---------|
| 1-1/2"    | .0005" | FOW-52-562-001 | \$99.00 |
| 1"        | .0005" | FOW-52-562-002 | \$99.00 |



Call Us Today For All Of Your Machine Tool Needs!

## UNIVERSAL INDICATOR HOLDER

For use with Test Indicators. Attaches to spindle with dovetail mount.

- For Bridgeport® type Machines.
- Clamping Diameter 1-7/8".
- Length from Clamping Bracket to indicator 4-1/2".
- For Milling Machines and Jigbores.
- A Quicker way of Indicating.
- Suitable for all popular Indicators with 5/32" shank or dovetail.
- Does not disturb the working tool.
- Mounts with single pressure screw
- Guaranteed accurate readings.



**Indicator Holder**  
Part #IND-87050B  
**\$11.50**

## TEST INDICATOR & UNIVERSAL INDICATOR HOLDER SET

### UNIVERSAL HOLDER SET:

- For Bridgeport type mills.
- Mounts directly on machine quill with single pressure screw.
- 1 7/8" clamping diameter.
- Stays clear of working tool.



**Indicator Holder Set**  
Part # UTH-500  
**\$35.00**

## X-TEST & XTRA-MAG COMBO

### Mag Base:

- 2 universal ball sockets
- Microfine adjustment screw
- 3-9/16" extension arm
- Dovetail mounting

*Complete In a Shop Hardened Case!*

### Test Indicator:

- Range: .060"
- Reading: 0-15-0, 1-1/2" dial dia
- Jewelled movement
- Graduation: .0005"
- Automatic reversal
- Tungsten carbide points: .040", .080" & .120"



*Virtually unlimited positioning as a Universal Base!*

| Description                  | Part Number    | Price    |
|------------------------------|----------------|----------|
| Xtra Mag with Test Indicator | FOW-52-562-105 | \$172.20 |

## XTRA MAG®

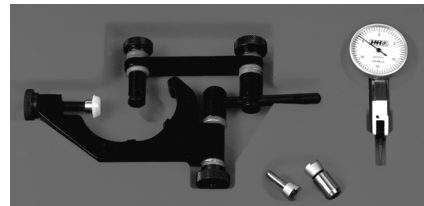
## PRECISION TEST INDICATOR KIT

### Indicator Holder:

- 2 universal ball sockets
- Microfine adjustment screw
- 3-9/16" extension arm
- Dovetail mounting

### 0-0.03" Test Indicator:

- Resolution: 0.0005"
- Precise pivot bearing
- 0.098" contact point
- Satin chrome finish
- Dovetail mount top, back and front
- 2 stems (7/32" & 1/4")
- Jeweled movement, automatic reversing



**Test Indicator Kit**  
Part # A-4400-0013  
**\$59.66**



## DIAL INDICATORS-AGD GROUPS 2 & 3



- Indicators have a shockless, hardened steel gear train and jewel bearings
- Lug on center back
- Conforms to AGD Standards



AGD Group 2



AGD Group 3

| Grad.                                | Range    |        | Dial Reading | Part Number | Price    |
|--------------------------------------|----------|--------|--------------|-------------|----------|
|                                      | One Rev. | Total  |              |             |          |
| <b>AGD Group 2- Face Dia: 2-1/4"</b> |          |        |              |             |          |
| .0005"                               | .050"    | .500"  | 0-50         | STR-53292   | \$185.00 |
|                                      |          | 1.000" | 0-50         | STR-53304   | \$185.00 |
| .001"                                | .100"    | .500"  | 0-100        | STR-53293   | \$160.00 |
|                                      |          | 1.000" | 0-50-0       | STR-53287   | \$157.00 |
|                                      |          |        | 0-100        | STR-53295   | \$154.00 |
| <b>AGD Group 3- Face Dia: 2-3/4"</b> |          |        |              |             |          |
| .001"                                | .100"    | .500"  | 0-50-0       | STR-53607   | \$201.00 |
|                                      |          | 1.000" | 0-100        | STR-53613   | \$201.00 |

## DIAL INDICATORS



- Graduation: .001"
- 1" total travel (range)
- 0-100 continuous reading
- Revolution counter
- Tolerance markers
- Lug back mount
- Includes certificate of calibration
- 3 year warranty

| Reading | Face  | Part Number     | Price   |
|---------|-------|-----------------|---------|
| .001"   | White | FOW-52-520-1102 | \$68.00 |
| .001"   | Black | FOW-52-520-1101 | \$68.00 |
| .0005"  | White | FOW-52-520-129  | \$81.00 |



## DIAL INDICATOR Inch & Metric Reading



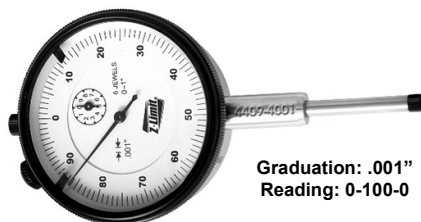
- Two dial indicators in one
- Inch on one side and metric on the opposite side
- Range: 0.5"/12.5mm
- 8mm mounting stem with 3/8" adaptor bushing included
- Jeweled movements
- Carbide contact point
- 1" spline contact point included
- Includes NIST certificate for both inch and metric readings

| Grad.  | Part Number    | Price   |
|--------|----------------|---------|
| 0.001" | FOW-52-530-115 | \$95.00 |



## 1" TRAVEL INDICATOR

- 1" Jeweled & dual back travel indicator
- 6 jewel movement
- Bezel lock screw is designed for easy adjustments
- Contact point is interchangeable with 4-48 thread points
- 3/8" diameter stem
- 2.19" in diameter dial face
- Reading range pointers are installed in the bezel
- Long form of calibration certificate is included
- Flat back is installed with an extra lug back included



Graduation: .001"  
Reading: 0-100-0



**1" Travel Indicator**  
Part # A-4409-4001  
**\$38.00**

Call Us Or Visit Our Website For Our Complete Selection!

LATHE CHUCKS  
LIVE CENTERS

VICE JAWS  
VICE ACCESSORIES

STRAIGHT SHANK  
COLLET HOLDERS

TAP HOLDERS  
DRILL CHUCKS

CARBIDE INSERTS  
THREADING/GROOVING

CUTTING TOOLS  
MACHINERY

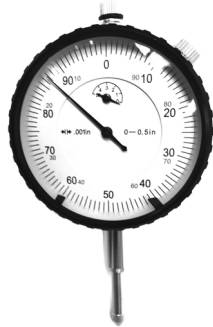
PRECISION TOOLS  
DEBURRING

COOLANT/FLUIDS  
TOOL STORAGE



# DIAL INDICATORS & ACCESSORIES

## AGD GROUP 2 DIAL INDICATORS



- Rack and contact point made of hardened stainless steel
- 3/8" diameter stem
- Contact point is interchangeable with thread 4-48
- Jeweled movement
- 2" diameter dial face
- Lug back



| Range   | Graduation | Part Number | Price   |
|---------|------------|-------------|---------|
| 0-0.50" | .001"      | A-4400-0004 | \$18.16 |
| 0-1"    | 0.001"     | A-4400-0001 | \$19.00 |
| 0-1"    | 0.0005"    | A-4400-1100 | \$19.80 |
| 0-1"    | 0.0001"    | A-4400-1000 | \$61.67 |
| 0-2"    | 0.001"     | A-4400-0002 | \$43.00 |

## INDICATOR & STAND COMBO



- Stand Features:**
- 6" x 6" x 2" granite base
  - Positive lock screw
  - Fine adjustment knob for zero setting
  - Column height is 8"

- Black Face Indicator features:**
- Reading: .001"
  - 1" Travel
  - AGD Group 2
  - Dial diameter: 2.25"
  - Continuous reading: 0—100



| Indicator  | Part Number    | Price    |
|------------|----------------|----------|
| Black Face | FOW-52-580-109 | \$135.00 |

## DIAL INDICATOR & STAND

- Granite Stand:**
- Fine adjustment
  - 0.00005" granite flatness
  - 10" height
  - Accepts all AGD indicators with lug back
  - Stand base is 6" x 6" x 2"



- Indicator:**
- 0-1" range
  - 3/8" diameter stem
  - Contact point is interchangeable with thread 4-48
  - Jeweled movement
  - 2" diameter dial face
  - Lug back

**Stand & Indicator**  
Part # A-4401-2001  
**\$65.00 each**

**Granite Stand Only**  
Part # A-4401-0020  
**\$55.00 each**

## MAGNETIC BASE

- MAGNETIC BASE:**
- Fine adjustment
  - On/off switch
  - Power pull: 130 lbs
  - Overall height: 9"
  - Max. reach: 16"
  - Holds most AGD group indicators
  - Base: 2" wide x 2-1/2" deep



- DIAL INDICATOR:**
- 0-1" range
  - 3/8" diameter stem
  - Contact point is interchangeable with thread 4-48
  - Jeweled movement
  - 2" diameter dial face
  - Lug back

**Base & Indicator**  
Part # A-4401-0015  
**\$47.00 each**

**Magnetic Base Only**  
Part # A-4401-0001  
**\$22.00 each**

## MAG BASE & INDICATOR COMBO

- Articulating Mag Base Features:**
- Adjust in almost unlimited ways.
  - Fine adjust
  - 85 lb. pull
  - V-slot on base for mounting on rounded surfaces

- AGD Indicator Features:**
- 1" travel.
  - Continuous reading: 0-100.
  - Reading: .001"
  - AGD group 2, 2-1/4" dial diameter.
  - Revolution counter
  - Tolerance markers
  - Lug back mount
  - Carbide point

*Can Be Set Up In Almost Unlimited Positions!*



| Description          | Part Number    | Price    |
|----------------------|----------------|----------|
| Mag Base & Indicator | FOW-52-585-150 | \$169.90 |
| Mag Base Only        | FOW-52-585-008 | \$92.20  |

## ELECTRONIC INDICATOR



- Direct Inch/Metric Conversion
- 2-1/4" dial face
- 1"/25mm travel
- Lug Back with 3/8" stem mountings
- Resolution .0005"/.01mm
- Tolerance indicators
- Min/Max measurement
- Floating zero
- Carbide-tipped point



| Description             | Dial Face | Part Number    | Price   |
|-------------------------|-----------|----------------|---------|
| 1"                      | 2-1/4"    | FOW-54-520-250 | \$75.00 |
| 1" Inch/Metric/Fraction | 2-1/4"    | FOW-54-520-260 | \$80.00 |

## ELECTRONIC INDICATOR



- Large, easy to read LCD
- **Range:** .500" (12.7mm)
- **Resolution:** .0005" (.01mm)
- Power On/Off button
- Reverse travel
- Zero setting at any position
- 3/8" diameter stem
- 4-48 spindle thread
- Lug on center back
- Plastic storage case with clear cover

**0-.500" Range**  
**Electronic Indicator**  
Part # STR-68813  
**\$182.00**



## ELECTRONIC INDICATOR



- Extra large LCD display
- **Range:** 0-0.5"
- **Resolution:** .0005" (.01mm)
- 4-48 thread
- Absolute zero reset button
- Zero setting at any position
- Includes SR44, 1.55V battery
- Lug back
- Supplied in fitted case

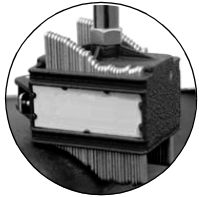
**0-.500" Range**  
**Electronic Indicator**  
Part # A-4400-0115  
**\$78.00**



Call Us Today For All Of Your Machine Tool Needs!

## PRO-QUALITY CONTOUR MAGNETIC BASE

- Magnetic base conforms to any shape
- Cam lock mechanism
- Unlimited versatility
- Fine adjustment
- On/off knob



**Contour Magnetic Base**  
Part # A-4401-0510  
**\$30.00**

## UNIVERSAL MAGNETIC BASE



- 3D rigid steel arm movement
- Unique central locking mechanism
- Fine adjust
- On/off switch
- Max. reach on Mini model is 7.5"



A-4401-0810



A-4401-0511

| Description                  | Base Size       | Part Number | Price   |
|------------------------------|-----------------|-------------|---------|
| MINI Universal Magnetic Base | 1.2" w x 1.5" d | A-4401-0810 | \$42.00 |
| Universal Magnetic Base      | 2" w x 2-1/2" d | A-4401-0511 | \$46.00 |

## FLEXIBLE ARM MAGNETIC BASE

- Flexible Magnetic Base
- Permanent magnet with on/off switch control
- Adjustable cable tension
- Stem flexes a full 360°
- Overall length is 13"
- Power pull is 130 lbs
- Base dimension is 2" wide x 2-1/2" depth
- Can be used with all AGD dial indicators
- Cam lever operates the cable and locks it rigid at any desired position



**Flexible Magnetic Base**  
Part # A-4401-0002  
**\$40.00**

## SURFACE GAGE WITH BUILT-IN SWITCHABLE MAGNETIC BASE



- Set includes 3-1/8" x 2-1/16" permanent magnetic base with on/off switch, fine adjustment on base and a 5/16" x 9" upright.
- .0005" test indicator (FOW#52-562-778) with .040", .080" & 120" contact points.
- Swivel clamp to mount indicator.
- Two dovetail stems: 5/32" & 3/8"
- 4" hardened scriber.
- Form fitted shop-hardened case for easy accessibility, and storage.



Indicator Not Included

| Description | Part Number    | Price    |
|-------------|----------------|----------|
| Xtra-Surf   | FOW-52-155-743 | \$109.00 |

## FLEX ARM MAG BASE SET

Includes Indicator & Flex Arm Mag Base



### Dial Indicator Features:

- AGD group 2
- Black face
- Dial dia: 2-1/4"
- Travel: 1", Reading: .001"
- Continuous reading: .100"
- Carbide tipped point

### Flex Arm Mag Base Features:

- Corrosion resistant chrome plated flex arm
- 85 lb. pull magnet
- Holds rigidly in almost any position
- V-base for mounting on rounded surfaces



| Description              | Part Number    | Price    |
|--------------------------|----------------|----------|
| Set w/ Dial Indicator    | FOW-52-585-500 | \$191.18 |
| Set w/ Digital Indicator | FOW-52-585-100 | \$171.24 |

## FINE ADJUST MAG BASE SET

Includes Indicator & Magnetic Base



### Dial Indicator Features:

- AGD group 2
- Black face
- Dial dia: 2-1/4"
- Travel: 1", Reading: .001"
- Continuous reading: .100"
- Carbide tipped point

### Magnetic Base Features:

- Fine adjustment
- 85 lb. pull magnet
- V-bottom base



| Description                        | Part Number    | Price    |
|------------------------------------|----------------|----------|
| Set w/ AGD Dial Indicator          | FOW-52-585-125 | \$135.00 |
| Set w/ Indi-X/Electronic Indicator | FOW-52-585-075 | \$170.00 |

## LARGE DIAMETER MAGNETIC BASE

With Articulating Arm & LED Flashlight



- 14 LED Ultra-bright flashlight
- Powerful, low-profile magnetic base
- Positive-locking 6" articulating arm allows for easy and accurate positioning
- Quick release mounting bracket clamp
- Batteries included



*This Product Is Ideal For Focused Applications In Industrial And Automotive!*

**Mag Base & Flashlight**  
Part # FOW-52-630-460

**\$52.16** each



Call Us Or Visit Our Website For Our Complete Selection!

LATHE CHUCKS  
LIVE CENTERS

WISE JAWS  
WISE ACCESSORIES

STRAIGHT SHANK  
COLLET HOLDERS

TAP HOLDERS  
DRILL CHUCKS

CARBIDE INSERTS  
THREADING/GROOVING

CUTTING TOOLS  
MACHINERY

PRECISION TOOLS  
DEBURRING

COOLANT/FLUIDS  
TOOL STORAGE