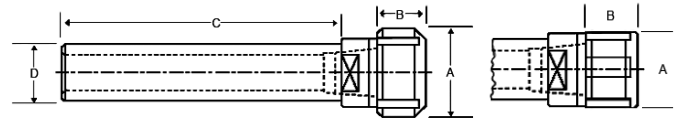


COLLET EXTENSIONS/STRAIGHT SHANK HOLDERS

ER STRAIGHT SHANK HOLDERS

ER-8, ER-11 & ER-16 Collet Extensions

- Crafted from heat treated alloy steel
- Available with round or flattened shank
- Supplied with collet nut



Collet Series	Shank Dia D	Shank Length C	Nut Dia A	Nut Length B	Nut Type	Shank Type	Part Number	Price Each	Thread of Nut	Collet Nut Part Number	Wrench Part Number
---------------	-------------	----------------	-----------	--------------	----------	------------	-------------	------------	---------------	------------------------	--------------------

ER 8 STRAIGHT SHANK COLLET HOLDERS

ER08	0.375	2.50	0.48	0.44	Mini	Round	S-E08R03-25N-R	\$83.50	M10X.75	CN-ER08MN-K	WR-ER08MN
ER08	0.375	3.50	0.48	0.44	Mini	Round	S-E08R03-35N-R	\$88.50	M10X.75	CN-ER08MN-K	WR-ER08MN
ER08	0.500	2.50	0.48	0.44	Mini	Round	S-E08R05-25N-R	\$83.50	M10X.75	CN-ER08MN-K	WR-ER08MN
ER08	0.500	2.50	0.48	0.44	Mini	Flatted	S-E08F05-25N-R	\$83.50	M10X.75	CN-ER08MN-K	WR-ER08MN
ER08	0.500	3.70	0.48	0.44	Mini	Round	S-E08R05-37N-R	\$83.50	M10X.75	CN-ER08MN-K	WR-ER08MN
ER08	0.500	3.70	0.48	0.44	Mini	Flatted	S-E08F05-37N-R	\$83.50	M10X.75	CN-ER08MN-K	WR-ER08MN

ER 11 STRAIGHT SHANK COLLET HOLDERS

ER11	0.500	3.00	0.63	0.44	Mini	Round	S-E11R05-30N-R	\$77.06	M13 X .75	CN-ER11MN-K	WR-ER11MN
ER11	0.500	3.00	0.75	0.44	Hex	Round	S-E11R05-30H-R	\$77.06	M14 X .75	CN-ER11H-K	WR-ER11H
ER11	0.500	4.00	0.63	0.44	Mini	Flatted	S-E11F05-40N-R	\$75.06	M13 X .75	CN-ER11MN-K	WR-ER11MN
ER11	0.500	6.00	0.63	0.44	Mini	Round	S-E11R05-60N-R	\$84.38	M13 X .75	CN-ER11MN-K	WR-ER11MN
ER11	0.500	6.00	0.63	0.44	Mini	Flatted	S-E11F05-60N-R	\$84.38	M13 X .75	CN-ER11MN-K	WR-ER11MN
ER11	0.500	6.00	0.75	0.44	Hex	Flatted	S-E11F05-60H-R	\$73.10	M14 X .75	CN-ER11H-K	WR-ER11H
ER11	0.500	6.20	0.75	0.44	Hex	Round	S-E11R05-62H-R	\$73.10	M14 X .75	CN-ER11H-K	WR-ER11H
ER11	0.625	2.00	0.63	0.44	Mini	Round	S-E11R06-20N-R	\$84.38	M13 X .75	CN-ER11MN-K	WR-ER11MN
ER11	0.625	3.00	0.63	0.44	Mini	Round	S-E11R06-30N-R	\$84.38	M13 X .75	CN-ER11MN-K	WR-ER11MN
ER11	0.625	3.00	0.75	0.44	Hex	Round	S-E11R06-30H-R	\$84.38	M14 X .75	CN-ER11H-K	WR-ER11H
ER11	0.625	6.00	0.63	0.44	Mini	Round	S-E11R06-60N-R	\$84.38	M13 X .75	CN-ER11MN-K	WR-ER11MN
ER11	0.625	6.20	0.75	0.44	Hex	Round	S-E11R06-62H-R	\$81.90	M14 X .75	CN-ER11H-K	WR-ER11H

ER 16 STRAIGHT SHANK COLLET HOLDERS

ER16	0.500	6.00	0.87	0.67	Mini	Round	S-E16R05-60N-R	\$99.50	M19X1	CN-ER16MN-K	WR-ER16MN
ER16	0.625	3.00	0.87	0.67	Mini	Round	S-E16R06-30N-R	\$84.38	M19X1	CN-ER16MN-K	WR-ER16MN
ER16	0.625	3.00	1.10	0.67	Hex	Round	S-E16R06-30H-R	\$76.50	M22X1.5	CN-ER16H-K	WR-ER16H
ER16	0.625	3.70	1.10	0.67	Hex	Round	S-E16R06-37H-R	\$77.50	M22X1.5	CN-ER16H-K	WR-ER16H
ER16	0.625	6.00	0.87	0.67	Mini	Round	S-E16R06-60N-R	\$94.83	M19X1	CN-ER16MN-K	WR-ER16MN
ER16	0.625	6.00	0.87	0.67	Mini	Flatted	S-E16F06-60N-R	\$94.83	M19X1	CN-ER16MN-K	WR-ER16MN
ER16	0.750	2.00	1.10	0.67	Hex	Round	S-E16R07-20H-R	\$72.00	M22X1.5	CN-ER16H-K	WR-ER16H
ER16	0.750	2.50	1.10	0.67	Hex	Round	S-E16R07-25H-R	\$72.00	M22X1.5	CN-ER16H-K	WR-ER16H
ER16	0.750	2.50	1.10	0.67	Hex	Flatted	S-E16F07-25H-R	\$72.00	M22X1.5	CN-ER16H-K	WR-ER16H
ER16	0.750	3.00	0.87	0.67	Mini	Round	S-E16R07-30N-R	\$84.38	M19X1	CN-ER16MN-K	WR-ER16MN
ER16	0.750	3.60	1.10	0.67	Hex	Round	S-E16R07-36H-R	\$72.00	M22X1.5	CN-ER16H-K	WR-ER16H
ER16	0.750	4.00	1.10	0.67	Hex	Round	S-E16R07-40H-R	\$77.50	M22X1.5	CN-ER16H-K	WR-ER16H
ER16	0.750	4.00	1.10	0.67	Hex	Flatted	S-E16F07-40H-R	\$77.50	M22X1.5	CN-ER16H-K	WR-ER16H
ER16	0.750	5.20	0.87	0.67	Mini	Round	S-E16R07-52N-R	\$100.05	M19X1	CN-ER16MN-K	WR-ER16MN
ER16	0.750	6.00	0.87	0.67	Mini	Flatted	S-E16F07-52N-R	\$83.50	M19X1	CN-ER16MN-K	WR-ER16MN
ER16	0.750	6.00	1.10	0.67	Hex	Round	S-E16R07-60H-R	\$83.00	M22X1.5	CN-ER16H-K	WR-ER16H
ER16	0.750	2.50	1.10	0.67	Hex	Flatted	S-E16F07-60H-R	\$83.00	M22X1.5	CN-ER16H-K	WR-ER16H
ER16	1.00	2.50	1.10	0.67	Hex	Round	S-E16R10-25H-R	\$72.00	M22X1.5	CN-ER16H-K	WR-ER16H
ER16	1.00	2.50	1.10	0.67	Hex	Flatted	S-E16F10-25H-R	\$70.00	M22X1.5	CN-ER16H-K	WR-ER16H
ER16	1.00	4.00	1.10	0.67	Hex	Round	S-E16R10-40H-R	\$77.50	M22X1.5	CN-ER16H-K	WR-ER16H
ER16	1.00	4.00	1.10	0.67	Hex	Flatted	S-E16F10-40H-R	\$77.50	M22X1.5	CN-ER16H-K	WR-ER16H
ER16	1.00	6.00	1.10	0.67	Hex	Round	S-E16R10-60H-R	\$83.00	M22X1.5	CN-ER16H-K	WR-ER16H

ER 20 STRAIGHT SHANK COLLET HOLDERS

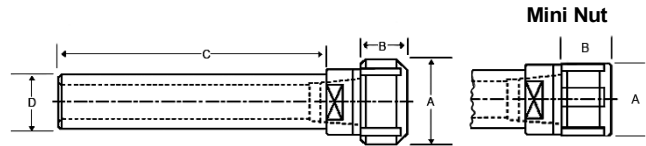
ER20	0.750	2.50	1.10	0.75	Mini	Round	S-E20R07-25N-R	\$83.25	M24X1	CN-ER20MN-K	WR-ER20MN
ER20	0.750	2.50	1.34	0.75	Hex	Round	S-E20R07-25H-R	\$72.00	M25X1.5	CN-ER20H-K	WR-ER20H
ER20	0.750	2.50	1.34	0.75	Hex	Flatted	S-E20F07-25H-R	\$72.00	M25X1.5	CN-ER20H-K	WR-ER20H
ER20	0.750	4.00	1.10	0.75	Mini	Round	S-E20R07-40N-R	\$102.50	M24X1	CN-ER20MN-K	WR-ER20MN
ER20	0.750	4.00	1.34	0.75	Hex	Round	S-E20R07-40H-R	\$77.50	M25X1.5	CN-ER20H-K	WR-ER20H
ER20	0.750	6.00	1.34	0.75	Hex	Round	S-E20R07-60H-R	\$83.00	M25X1.5	CN-ER20H-K	WR-ER20H
ER20	0.750	6.00	1.34	0.75	Hex	Flatted	S-E20F07-60H-R	\$83.00	M25X1.5	CN-ER20H-K	WR-ER20H

Call Us Today For All Of Your Machine Tool Needs!

ER STRAIGHT SHANK HOLDERS

ER Collet Extensions

- Crafted from heat treated alloy steel
- Available with round or flatted shank
- Supplied with collet nut



Collet Series	Shank Dia D	Shank Length C	Nut Dia A	Nut Length B	Nut Type	Shank Type	Part Number	Price Each	Thread of Nut	Collet Nut Part Number	Wrench Part Number
---------------	-------------	----------------	-----------	--------------	----------	------------	-------------	------------	---------------	------------------------	--------------------

ER 20 STRAIGHT SHANK COLLET HOLDERS (continued from previous page)

ER20	1.00	2.50	1.34	0.75	Hex	Round	S-E20R10-25H-R	\$72.00	M25X1.5	CN-ER20H-K	WR-ER20H
ER20	1.00	4.00	1.34	0.75	Hex	Round	S-E20R10-40H-R	\$77.50	M25X1.5	CN-ER20H-K	WR-ER20H
ER20	1.00	5.20	1.10	0.75	Mini	Round	S-E20R10-52N-R	\$88.50	M24X1	CN-ER20MN-K	WR-ER20MN
ER20	1.00	6.00	1.34	0.75	Hex	Round	S-E20R10-60H-R	\$83.00	M25X1.5	CN-ER20H-K	WR-ER20H

ER 25 STRAIGHT SHANK COLLET HOLDERS

ER25	0.500	4.00	1.65	0.79	Spanner	Round	S-E25R05-40S-R	\$83.00	M32X1.5	CN-ER25S-K	WR-ER25S
ER25	0.750	2.50	1.65	0.79	Spanner	Round	S-E25R07-25S-R	\$77.50	M32X1.5	CN-ER25S-K	WR-ER25S
ER25	0.750	2.50	1.65	0.79	Spanner	Flatted	S-E25F07-25S-R	\$77.50	M32X1.5	CN-ER25S-K	WR-ER25S
ER25	0.750	4.00	1.65	0.79	Spanner	Round	S-E25R07-40S-R	\$83.00	M32X1.5	CN-ER25S-K	WR-ER25S
ER25	0.750	4.00	1.65	0.79	Spanner	Flatted	S-E25F07-40S-R	\$83.00	M32X1.5	CN-ER25S-K	WR-ER25S
ER25	0.750	6.00	1.65	0.79	Spanner	Round	S-E25R07-60S-R	\$88.50	M32X1.5	CN-ER25S-K	WR-ER25S
ER25	0.750	6.00	1.65	0.79	Spanner	Flatted	S-E25F07-60S-R	\$86.50	M32X1.5	CN-ER25S-K	WR-ER25S
ER25	1.00	2.50	1.65	0.79	Spanner	Round	S-E25R10-25S-R	\$77.50	M32X1.5	CN-ER25S-K	WR-ER25S
ER25	1.00	2.50	1.65	0.79	Spanner	Flatted	S-E25F10-25S-R	\$75.50	M32X1.5	CN-ER25S-K	WR-ER25S
ER25	1.00	2.50	1.38	0.79	Mini	Flatted	S-E25F10-25N-R	\$77.50	M30X1	CN-ER25MN-K	WR-ER25MN
ER25	1.00	4.00	1.38	0.79	Mini	Round	S-E25R10-40N-R	\$102.50	M30X1	CN-ER25MN-K	WR-ER25MN
ER25	1.00	4.00	1.65	0.79	Spanner	Round	S-E25R10-40S-R	\$83.00	M32X1.5	CN-ER25S-K	WR-ER25S
ER25	1.00	4.00	1.65	0.79	Spanner	Flatted	S-E25F10-40S-R	\$83.00	M32X1.5	CN-ER25S-K	WR-ER25S
ER25	1.00	6.00	1.65	0.79	Spanner	Round	S-E25R10-60S-R	\$88.50	M32X1.5	CN-ER25S-K	WR-ER25S
ER25	1.00	6.00	1.65	0.79	Spanner	Flatted	S-E25F10-60S-R	\$88.50	M32X1.5	CN-ER25S-K	WR-ER25S

ER 32 STRAIGHT SHANK COLLET HOLDERS

ER32	1.00	2.00	1.97	0.87	Spanner	Round	S-E32R10-20S-R	\$83.00	M40X1.4	CN-ER32S-K	WR-ER32S
ER32	1.00	2.50	1.97	0.87	Spanner	Round	S-E32R10-25S-R	\$83.00	M40X1.4	CN-ER32S-K	WR-ER32S
ER32	1.00	2.50	1.97	0.87	Spanner	Flatted	S-E32F10-25S-R	\$81.00	M40X1.4	CN-ER32S-K	WR-ER32S
ER32	1.00	4.00	1.97	0.87	Spanner	Round	S-E32R10-40S-R	\$88.50	M40X1.4	CN-ER32S-K	WR-ER32S
ER32	1.00	4.00	1.97	0.87	Spanner	Flatted	S-E32F10-40S-R	\$86.50	M40X1.4	CN-ER32S-K	WR-ER32S
ER32	1.00	6.00	1.97	0.87	Spanner	Round	S-E32R10-60S-R	\$94.00	M40X1.4	CN-ER32S-K	WR-ER32S
ER32	1.00	6.00	1.97	0.87	Spanner	Flatted	S-E32F10-60S-R	\$94.00	M40X1.4	CN-ER32S-K	WR-ER32S
ER32	1.25	2.00	1.97	0.87	Spanner	Round	S-E32R12-20S-R	\$83.00	M40X1.4	CN-ER32S-K	WR-ER32S
ER32	1.25	2.50	1.97	0.87	Spanner	Round	S-E32R12-25S-R	\$83.00	M40X1.4	CN-ER32S-K	WR-ER32S
ER32	1.25	4.00	1.97	0.87	Spanner	Round	S-E32R12-40S-R	\$88.50	M40X1.4	CN-ER32S-K	WR-ER32S
ER32	1.25	4.00	1.97	0.87	Spanner	Flatted	S-E32F12-40S-R	\$86.50	M40X1.4	CN-ER32S-K	WR-ER32S
ER32	1.25	6.00	1.97	0.87	Spanner	Round	S-E32R12-60S-R	\$94.00	M40X1.4	CN-ER32S-K	WR-ER32S

ER 40 STRAIGHT SHANK COLLET HOLDERS

ER40	1.00	2.50	2.48	0.98	Spanner	Round	S-E40R10-25S-R	\$94.00	M50X1.5	CN-ER40S-K	WR-ER40S
ER40	1.00	2.50	2.48	0.98	Spanner	Flatted	S-E40F10-25S-R	\$94.00	M50X1.5	CN-ER40S-K	WR-ER40S
ER40	1.00	4.00	2.48	0.98	Spanner	Round	S-E40R10-40S-R	\$99.50	M50X1.5	CN-ER40S-K	WR-ER40S
ER40	1.00	4.00	2.48	0.98	Spanner	Flatted	S-E40F10-40S-R	\$99.50	M50X1.5	CN-ER40S-K	WR-ER40S
ER40	1.00	6.00	2.48	0.98	Spanner	Round	S-E40R10-60S-R	\$103.50	M50X1.5	CN-ER40S-K	WR-ER40S
ER40	1.25	2.50	2.48	0.98	Spanner	Round	S-E40R12-25S-R	\$94.00	M50X1.5	CN-ER40S-K	WR-ER40S
ER40	1.25	4.00	2.48	0.98	Spanner	Round	S-E40R12-40S-R	\$99.50	M50X1.5	CN-ER40S-K	WR-ER40S
ER40	1.25	4.00	2.48	0.98	Spanner	Flatted	S-E40F12-40S-R	\$99.50	M50X1.5	CN-ER40S-K	WR-ER40S
ER40	1.25	6.00	2.48	0.98	Spanner	Round	S-E40R12-60S-R	\$103.50	M50X1.5	CN-ER40S-K	WR-ER40S
ER40	1.25	6.00	2.48	0.98	Spanner	Flatted	S-E40F12-60S-R	\$103.00	M50X1.5	CN-ER40S-K	WR-ER40S

Call Us Or Visit Our Website For Our Complete Selection!

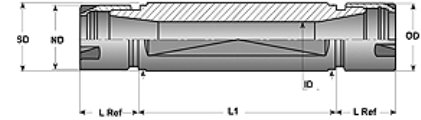
COLLET EXTENSIONS/STRAIGHT SHANK HOLDERS

DOUBLE ENDED STRAIGHT SHANK HOLDERS



ER Series Collet Extensions

- Ideal for Swiss Machines
- Available in Inch and Metric shank sizes
- Comes complete with collet nuts (wrench sold separately)

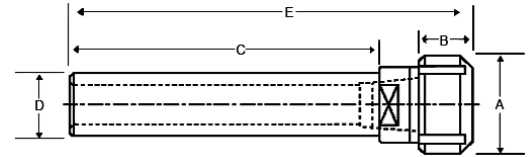


Collet Series	Shank Dia. (SD)	Shank Length (L1)	OAL (mm)	Nut Dia (ND)	Nut Length	Part Number	Price Each	Thread of Nut	Collet Nut Part Number	Wrench Part Number
ER08	5/8"	15mm	45	0.48"	0.44"	D-E08F06-15N-R	\$146.50	M10X.75	CN-EK08MN-K	WR-ER08MN
	5/8"	25mm	55	0.48"	0.44"	D-E08F06-25N-R	\$150.25	M10X.75	CN-EK08MN-V	WR-ER08MN
ER11	16mm	40mm	79	0.63"	0.44"	D-E11F16M40N-R	\$130.75	M13X.75	CN-EK11MN-K	WR-ER11MN
	16mm	50mm	90	0.63"	0.44"	D-E11F16M50N-R	\$152.88	M13X.75	CN-EK11MN-K	WR-ER11MN
	3/4"	25mm	65	0.63"	0.44"	D-E11F07-25N-R	\$126.25	M13X.75	CN-EK11MN-K	WR-ER11MN
	3/4"	40mm	80	0.63"	0.44"	D-E11F07-40N-R	\$126.25	M13X.75	CN-EK11MN-K	WR-ER11MN
	3/4"	70mm	110	0.63"	0.44"	D-E11F07-70N-R	\$126.25	M13X.75	CN-EK11MN-K	WR-ER11MN
	3/4"	90mm	130	0.63"	0.44"	D-E11F07-90N-R	\$126.25	M13X.75	CN-EK11MN-K	WR-ER11MN
	20mm	30mm	70	0.63"	0.44"	D-E11F20M30N-R	\$143.50	M13X.75	CN-EK11MN-K	WR-ER11MN
	20mm	50mm	90	0.63"	0.44"	D-E11F20M50N-R	\$145.00	M13X.75	CN-EK11MN-K	WR-ER11MN
	20mm	70mm	109	0.63"	0.44"	D-E11F20M70N-R	\$153.00	M13X.75	CN-EK11MN-K	WR-ER11MN
	20mm	90mm	128	0.63"	0.44"	D-E11F20M90N-R	\$153.00	M13X.75	CN-EK11MN-K	WR-ER11MN
ER16	3/4"	55mm	107	0.87"	0.67"	D-E16F07-55N-R	\$152.50	M19X1	CN-EK16MN-K	WR-ER16MN
	20mm	30mm	85	0.87"	0.67"	D-E16F20M30N-R	\$152.50	M19X1	CN-EK16MN-K	WR-ER16MN
	20mm	55mm	107	0.87"	0.67"	D-E16F20M55N-R	\$160.75	M19X1	CN-EK16MN-K	WR-ER16MN
	22mm	55mm	111	0.87"	0.67"	D-E16F22M55N-R	\$153.00	M19X1	CN-EK16MN-K	WR-ER16MN
	22mm	75mm	131	0.87"	0.67"	D-E16F22M75N-R	\$155.50	M19X1	CN-EK16MN-K	WR-ER16MN
	25mm	36mm	92	0.87"	0.67"	D-E16F25M36N-R	\$153.00	M19X1	CN-EK16MN-K	WR-ER16MN
	25mm	62mm	118	0.87"	0.67"	D-E16F25M62N-R	\$155.50	M19X1	CN-EK16MN-K	WR-ER16MN
	1"	30mm	85	0.87"	0.67"	D-E16F10-30N-R	\$155.50	M19X1	CN-EK16MN-K	WR-ER16MN
1"	62mm	118	0.87"	0.67"	D-E16F10-62N-R	\$155.50	M19X1	CN-EK16MN-K	WR-ER16MN	
ER20	25mm	36mm	92	1.10"	0.75"	D-E20F25M36N-R	\$129.00	M24X1	CN-EK20MN-K	WR-ER20MN
	25mm	66mm	122	1.10"	0.75"	D-E20F25M66N-R	\$129.00	M24X1	CN-EK20MN-K	WR-ER20MN
	32mm	55mm	111	1.10"	0.75"	D-E20F32M55N-R	\$139.00	M24X1	CN-EK20MN-K	WR-ER20MN
	32mm	75mm	131	1.10"	0.75"	D-E20F32M75N-R	\$139.00	M24X1	CN-EK20MN-K	WR-ER20MN

TG STRAIGHT SHANK HOLDERS

TG Series Collet Extensions

- Crafted from heat treated alloy steel
- Available with round or flattened shank
- Supplied with collet nut



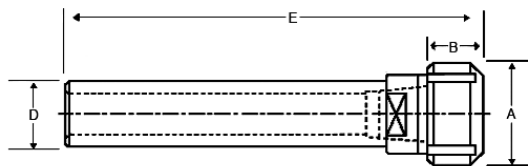
Collet Series	Shank D	C	OAL	Nut Dia	Length of Nut	Type of Nut	Shank Type	Part Number	Price Each	Collet Nut Part Number	Wrench Part Number
TG 75	0.750	2.75	5.79	2.10	2.44	HEX	Flat	S-T75F07-27H-K	\$206.27	CN-TG75-K	WR-TG75-K
TG 75	1.000	2.75	5.79	2.10	2.44	HEX	Flat	S-T75F10-27H-K	\$215.42	CN-TG75-K	WR-TG75-K
TG 75	1.250	3.25	6.30	2.10	2.44	HEX	Flat	S-T75F12-32H-K	\$223.17	CN-TG75-K	WR-TG75-K
TG 75	1.250	6.00	8.50	2.10	2.44	HEX	Round	S-T75R12-60H-K	\$247.50	CN-TG75-K	WR-TG75-K
TG 75	1.500	3.37	6.42	2.10	2.44	HEX	Flat	S-T75F15-33H-K	\$229.86	CN-TG75-K	WR-TG75-K
TG 75	1.500	6.00	7.80	2.10	2.44	HEX	Round	S-T75R15-60H-K	\$258.50	CN-TG75-K	WR-TG75-K
TG 75	1.750	3.50	6.54	2.10	2.44	HEX	Flat	S-T75F17-35H-K	\$231.62	CN-TG75-K	WR-TG75-K
TG 75	2.000	4.00	7.05	2.10	2.44	HEX	Flat	S-T75F20-40H-K	\$237.95	CN-TG75-K	WR-TG75-K
TG 100	0.750	2.75	5.98	2.44	1.41	HEX	Flat	S-T10F07-27H-K	\$206.27	CN-TG100-K	WR-TG100-K
TG 100	1.000	2.75	5.98	2.44	1.41	HEX	Flat	S-T10F10-27H-K	\$215.42	CN-TG100-K	WR-TG100-K
TG 100	1.250	3.25	6.50	2.44	1.41	HEX	Flat	S-T10F12-32H-K	\$223.17	CN-TG100-K	WR-TG100-K
TG 100	1.250	6.00	9.30	2.44	1.41	HEX	Round	S-T10R12-60H-K	\$247.50	CN-TG100-K	WR-TG100-K
TG 100	1.500	3.37	6.61	2.44	1.41	HEX	Flat	S-T10F15-33H-K	\$229.86	CN-TG100-K	WR-TG100-K
TG 100	1.500	6.00	9.30	2.44	1.41	HEX	Round	S-T10R15-60H-K	\$258.50	CN-TG100-K	WR-TG100-K
TG 100	1.750	3.50	6.73	2.44	1.41	HEX	Flat	S-T10F17-35H-K	\$231.62	CN-TG100-K	WR-TG100-K
TG 100	1.750	6.00	8.20	2.44	1.41	HEX	Round	S-T10R17-60H-K	\$269.50	CN-TG100-K	WR-TG100-K
TG 100	2.000	4.00	7.24	2.44	1.41	HEX	Flat	S-T10F20-40H-K	\$237.95	CN-TG100-K	WR-TG100-K
TG 100	2.000	6.00	8.20	2.44	1.41	HEX	Round	S-T10R20-60H-K	\$280.50	CN-TG100-K	WR-TG100-K
TG 150	1.750	8.00	11.70	-	-	HEX	Round	S-T15R17-80H-K	\$297.00	CN-TG150-K	WR-TG150-K
TG 150	2.000	8.00	11.70	-	-	HEX	Round	S-T15R20-80H-K	\$297.00	CN-TG150-K	WR-TG150-K

Call Us Today For All Of Your Machine Tool Needs!

DA STRAIGHT SHANK HOLDERS

DA Series Collet Extensions

- Fits standard double angle (DA) collets
- Crafted from heat treated alloy steel
- Available with round shank
- Supplied with hex collet nut

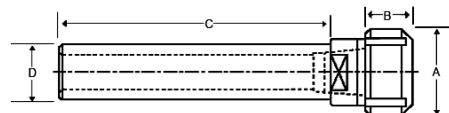


Collet Series	Shank D	C	OAL	Max Dia Thru Shank	Nut Dia	Length of Nut	Part Number	Price Each	Collet Nut Part Number	Wrench Hex Size	Nut Thread
DA 100	1.000	3.00	4.00	9/16	1.06	0.900	S-D10R10-30H-F	\$69.70	CN-DA10S10-F	7/8	-
DA 100	1.000	3.00	4.00	.586	1.43	0.900	S-D10R10-30H-K	\$65.70	CN-DA10S09-K	1-1/4	1"-14
DA 100	1.000	5.62	7.30	9/16	1.06	1.540	S-D10R10-56H-F	\$69.70	CN-DA10E10-F	7/8	-
DA 100	1.000	5.62	7.30	.590	1.43	0.900	S-D10R10-56H-K	\$65.70	CN-DA10S09-K	1-1/4	1"-14
DA 180	1.000	5.00	6.20	3/4	1.56	0.870	S-D18R10-50H-F	\$92.20	CN-DA18S18-F	1-3/8	-
DA 180	1.000	5.00	6.20	.668	1.72	0.900	S-D18R10-50H-K	\$88.20	CN-DA18S09-K	1-1/2	1-1/4"-12
DA 180	1.250	5.00	6.20	3/4	1.56	0.870	S-D18R12-50H-F	\$85.90	CN-DA18S18-F	1-3/8	-
DA 180	1.250	5.00	6.20	.718	1.72	0.900	S-D18R12-50H-K	\$81.90	CN-DA18S09-K	1-1/2	1-1/4"-12
DA 180	1.500	5.00	6.20	3/4	1.56	0.870	S-D18R15-50H-F	\$93.10	CN-DA18S18-F	1-3/8	-
DA 180	1.500	5.00	6.20	.866	1.72	0.900	S-D18R15-50H-K	\$89.10	CN-DA18S09-K	1-1/2	1-1/4"-12
DA 180	1.750	5.00	6.20	3/4	1.56	0.870	S-D18R17-50H-F	\$99.40	CN-DA18S18-F	1-3/8	-
DA 180	1.750	5.00	6.20	.866	1.72	0.900	S-D18R17-50H-K	\$95.40	CN-DA18S09-K	1-1/2	1-1/4"-12
DA 200	0.625	3.00	3.75	3/8	0.75	0.710	S-D20R06-30H-F	\$58.90	CN-DA20S06-F	11/16	-
DA 200	0.625	3.00	3.75	.453	1.14	0.758	S-D20R06-30H-K	\$54.90	CN-DA20S07-K	1"	3/4"-16
DA 200	0.750	3.00	3.80	3/8	0.81	0.710	S-D20R07-30H-F	\$65.20	CN-DA20S07-F	3/4	-
DA 200	0.750	3.00	3.80	.478	1.14	0.758	S-D20R07-30H-K	\$61.20	CN-DA20S07-K	1"	3/4"-16
DA 200	0.750	5.62	7.10	3/8	0.81	1.340	S-D20R07-56H-F	\$65.20	CN-DA20E07-F	11/16	-
DA 200	0.750	5.62	7.10	.478	1.14	0.758	S-D20R07-56H-K	\$61.20	CN-DA20S07-K	1"	3/4"-16
DA 300	0.500	2.75	3.60	1/4	0.56	0.700	S-D30R05-27H-F	\$54.40	CN-DA30S05-F	1/2	-
DA 300	0.500	2.75	3.60	.343	0.76	0.729	S-D30R05-27H-K	\$50.40	CN-DA30S07-K	11/16	9/16"-18
DA 300	0.500	5.62	6.80	1/4	0.56	1.000	S-D30R05-56H-F	\$54.40	CN-DA30E05-F	1/2	-
DA 300	0.500	5.62	6.80	.343	0.76	0.729	S-D30R05-56H-K	\$50.40	CN-DA30S07-K	11/16	9/16"-18
DA 300	0.625	3.20	3.75	1/4	0.56	0.700	S-D30R06-32H-F	\$58.90	CN-DA30S05-F	1/2	-
DA 300	0.625	3.20	3.75	.343	0.76	0.729	S-D30R06-32H-K	\$54.90	CN-DA30S07-K	11/16	9/16"-18

AF STRAIGHT SHANK HOLDERS

AF Series Collet Extensions

- Fits Acura-Flex™ (AF) collets
- Crafted from heat treated alloy steel
- Available with round shank
- Supplied with hex collet nut



Collet Series	Shank D	C	Nut Dia	Length of Nut	Type of Nut	Shank Type	Part Number	Price Each [E]	Collet Nut Part Number	Thread Of Nut	Nut Industry Reference #
AF 25	0.500	5.50	0.73	0.54	HEX	Round	S-A25R05-55H-R	\$103.00	CN-AF25H	9/16-28	C9400022
AF 25	0.750	5.50	0.73	0.54	HEX	Round	S-A25R07-55H-R	\$103.00	CN-AF25H	9/16-28	C9400022
AF 38	0.625	4.00	1.06	0.62	HEX	Round	S-A38R06-40H-R	\$80.50	CN-AF38H	13/16-12	C9400002
AF 38	0.750	4.00	1.06	0.62	HEX	Round	S-A38R07-40H-R	\$89.00	CN-AF38H	13/16-12	C9400002
AF 38	0.750	5.50	1.06	0.62	HEX	Round	S-A38R07-55H-R	\$103.00	CN-AF38H	13/16-12	C9400002
AF 50	0.750	4.00	1.34	0.69	HEX	Round	S-A50R07-40H-R	\$84.00	CN-AF50H	1"-12	C9400020
AF 50	0.750	6.00	1.34	0.69	HEX	Round	S-A50R07-60H-R	\$103.00	CN-AF50H	1"-12	C9400020
AF 50	1.000	4.00	1.34	0.69	HEX	Round	S-A50R10-40H-R	\$79.00	CN-AF50H	1"-12	C9400020
AF 50	1.000	6.00	1.34	0.69	HEX	Round	S-A50R10-60H-R	\$89.00	CN-AF50H	1"-12	C9400020
AF 75	1.000	4.50	1.96	1.06	HEX	Round	S-A75R10-45H-R	\$79.00	CN-AF75H	1-1/2"-12	C900005
AF 75	1.250	5.50	1.96	1.06	HEX	Round	S-A75R12-55H-R	\$114.00	CN-AF75H	1-1/2"-12	C900005
AF 100	1.250	5.00	2.48	1.19	HEX	Round	S-A10R12-50H-R	\$79.00	CN-AF100H	2"-12	C940021
AF 100	1.500	6.50	2.48	1.19	HEX	Round	S-A10R15-65H-R	\$139.00	CN-AF100H	2"-12	C940021

DIAMOND PLATE SPONGECOTE

Anti-Fatigue Mats-No. 415

- For use in dry work areas
- Anti-fatigue
- Nitricell sponge base for unparalleled comfort
- Safety beveled edges
- Slip and wear resistant
- 9/16" thickness
- 3 Year Warranty



Size	Thickness	Color	Part Number	Price
2' x 3'	9/16"	Black	WW-415916-2-3BK	\$55.30
		Blk/Yellow	WW-415916-2-3BY	\$63.02
3' x 5'	9/16"	Black	WW-415916-3-5BK	\$134.47
		Blk/Yellow	WW-415916-3-5BY	\$145.08

Call Us Or Visit Our Website For Our Complete Selection!



COLLET ACCESSORIES

ER COLLET NUTS & WRENCHES

- Replacement nuts & wrenches for ER collet holders
- Nuts available in mini, hex & spanner
- For ER Collets, please see pages 152-156



HEX NUT



SPANNER NUT



MINI NUT



HEX WRENCH



SPANNER WRENCH



MINI WRENCH

Collet Series	Nut Type	Nut Dia		Nut Length		Threads	Part Number	Price Each	Ref #	Brand	Collet Wrench	
		mm	Inch	mm	Inch						Part Number	Price Each
ER08	Mini	12.2	.48	11.3	.44	-	CN-ER08MN-K	\$25.00	-	Kingston	WR-ER08MN	\$17.50
ER11	Mini	16	0.63	11.3	.44	M13 X .75	CN-ER11MN-K	\$29.00	CN-111	Kingston	WR-ER11MN	\$17.50
	Hex	19	0.75	11.3	.44	M14 X .75	CN-ER11H-K	\$31.25	CN-110	Kingston	WR-ER11H	\$30.16
ER16	Mini	22	0.87	17	.67	M19 X 1	CN-ER16MN-K	\$32.00	CN-162	Kingston	WR-ER16MN	\$17.50
	Hex	28	1.10	17	.67	M22 X 1.5	CN-ER16H-K	\$31.25	CN-160	Kingston	WR-ER16H	\$30.16
ER20	Mini	28	1.10	19	.75	M24 X 1	CN-ER20MN-K	\$36.00	CN-201	Kingston	WR-ER20MN	\$19.50
	Hex	34	1.34	19	.75	M25 X 1.5	CN-ER20H-K	\$31.25	CN-200	Kingston	WR-ER20H	\$30.16
ER25	Mini	35	1.38	20	.79	M30 X 1	CN-ER25MN-K	\$39.00	-	Kingston	WR-ER25MN	\$20.50
	Spanner	42	1.65	20	.79	M32 X 1.5	CN-ER25S-K	\$33.43	CN-250	Kingston	WR-ER25S-KT	\$28.00
ER32	Spanner	50	1.97	22	.87	M40 X 1.4	CN-ER32S-K	\$33.43	CN-320	Kingston	WR-ER32S	\$30.16
ER40	Spanner	63	2.48	25	.98	M50 X 1.5	CN-ER40S-K	\$47.60	CN-400	Kingston	WR-ER40S	\$30.16

DA, TG & AF COLLET NUTS & WRENCHES



Collet Series	Nut Dia		Nut Length		Threads	Part Number	Price Each	Ref #	Brand	Collet Wrench		
	mm	Inch	mm	Inch						Part Number	Price Each	
TG Series Collet Nuts & Wrenches												
TG75	55.4	2.18	23.1	.91	-	CN-TG075-K	\$32.70	-	Kingston	WR-TG075-K	\$34.00	
TG100	63.0	2.48	32.8	1.29	-	CN-TG100-K	\$39.24	CN-108	Kingston	WR-TG100-K	\$37.00	
TG150	82.6	3.25	44.5	1.75	-	CN-TG150-K	\$54.50	-	Kingston	WR-TG150-K	\$36.00	

AF Series Collet Nuts & Wrenches												
AF25	-	0.73	-	0.54	9/16-28	CN-AF25H-K	\$24.30	CN-AF25	Kingston	-	-	
AF38	-	1.06	-	0.62	13/16-12	CN-AF38H-K	\$27.98	CN-AF38	Kingston	-	-	
AF50	-	1.34	-	0.69	1-12	CN-AF50H-K	\$31.25	CN-AF50	Kingston	-	-	
AF75	-	1.96	-	1.06	1-1/2-12	CN-AF75H-K	\$48.69	CN-AF75	Kingston	-	-	
AF100	-	2.48	-	1.19	2-12	CN-AF100H-K	\$59.59	-	Kingston	-	-	

DA Series Collet Nuts & Wrenches												
DA100	-	1.06	-	0.90	-	CN-DA10S10-F	\$21.50	CN-106	Craftsman	-	-	
	-	1.06	-	1.54	-	CN-DA10E10-F	\$21.50	CN-105	Craftsman	-	-	
	-	1.06	-	1.5	15/16-20	CN-DA10ECN10-P	\$37.00	-	Parlec	WR-ECN10W-P	\$22.70	
	-	1.39	-	.910	1-14	CN-DACN100-A	\$29.45	-	Briney	WR-DA10W-A	\$21.00	
DA180	-	1.56	-	0.87	-	CN-DA18S18-F	\$21.50	CN-185	Craftsman	-	-	
	-	1.44	-	1.6	1 1/4-16	CN-DA18ECN12-P	\$35.00	-	Parlec	WR-ECN12W-P	\$34.00	
	-	1.7	-	.85	1 1/4-12	CN-DA18180CN-P	\$55.00	-	Parlec	WR-180CNW-P	\$42.00	
	-	1.7	-	.875	1 1/4-12	CN-DACN180-A	\$33.25	-	Briney	WR-DA18W-A	\$22.00	
DA200	-	0.75	-	0.71	-	CN-DA20S06-F	\$19.50	CN-213	Craftsman	-	-	
	-	0.81	-	0.71	-	CN-DA20S07-F	\$19.50	CN-212	Craftsman	-	-	
	-	.81	-	1.38	11/16-20	CN-DA20ECN75-P	\$35.00	-	Parlec	WR-ECN75W-P	\$18.60	
	-	1.1	-	.88	3/4-16	CN-DA20CN20-P	\$35.00	-	Parlec	WR-ECN20W-P	\$23.70	
	-	1.125	-	.875	3/4-16	CN-DACN200-A	\$27.55	-	Briney	WR-DA20W-A	\$19.00	
	-	0.81	-	1.34	-	CN-DA20E07-F	\$19.50	CN-211	Craftsman	-	-	
DA300	-	0.56	-	0.70	-	CN-DA30S05-F	\$16.50	CN-306	Craftsman	-	-	
	-	0.56	-	1.00	-	CN-DA30E05-F	\$16.50	CN-305	Craftsman	-	-	
	-	.56	-	1.1	7/16-32	CN-DA30ECN50-P	\$29.00	-	Parlec	WR-ECN50W-P	\$15.50	
	-	.62	-	1.1	1/2-28	CN-DA30CN30-P	\$29.00	-	Parlec	WR-ECN50W-P	\$15.50	
	-	.860	-	.7	9/16-18	CN-DACN300-A	\$23.75	-	Briney	WR-DA30W-A	\$17.00	

Call Us Today For All Of Your Machine Tool Needs!

CHUCK JAWS
LATHE WORKHOLDING

MACHINE VISES
VISE JAWS

RETENTION KNOBS
ER, DA, TG COLLETS

TOOLHOLDERS
TAP HOLDERS

INDEXABLE DRILLS
TURNING & BORING

ENDMILLS, DRILLS
TAPS & REAMERS

ABRASIVES
MEASURING TOOLS

MRO & SAFETY
FLAT STOCK/DRILL ROD