

# Accu-Collets™

# ER COLLETS

PRICES REDUCED OVER  
**45% OFF**  
2017 LIST PRICES!



PRECISION Collets: 0.0005" TIR  
ULTRA PRECISION: 0.0002" TIR

- **PRECISION** Collets 0.0005" TIR
- **ULTRA PRECISION:** 0.0002" TIR
- **TRUE INCH** and metric sizes
- Crafted from high quality European spring steel
- **Fractional Collets** manufactured specifically for US shop requirements
- **INDIVIDUALLY TESTED** for quality and accuracy!
- Accu-Collets improve tool life, part finish and reduces spindle wear
- **100% Satisfaction Guarantee!**



**ACCURACY**  
Precision Collets 0.0005" TIR  
Ultra Precision Collets 0.0002" TIR  
Measured at 4x length from collet nose

## ER-8 COLLETS Precision

Starting At:

**\$14<sup>75</sup>** each

ULTRA PRECISION Starting At: **\$21.00 ea**

## ER-11 COLLETS Precision

Starting At:

**\$8<sup>75</sup>** each

ULTRA PRECISION Starting At: **\$21.00 ea**

## ER-16 COLLETS Precision

Starting At:

**\$8<sup>75</sup>** each

ULTRA PRECISION Starting At: **\$21.00 ea**

## ER-20 COLLETS Precision

Starting At:

**\$9<sup>75</sup>** each

ULTRA PRECISION Starting At: **\$23.00 ea**

## ER-25 COLLETS Precision

Starting At:

**\$9<sup>75</sup>** each

ULTRA PRECISION Starting At: **\$23.00 ea**

## ER-32 COLLETS Precision

Starting At:

**\$10<sup>25</sup>** each

ULTRA PRECISION Starting At: **\$26.00 ea**

## ER-40 COLLETS Precision

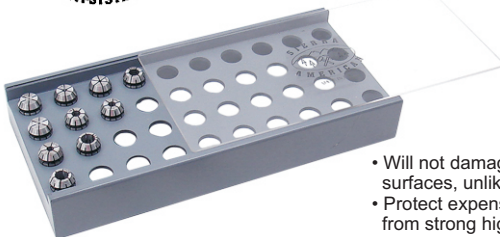
Starting At:

**\$11<sup>25</sup>** each

ULTRA PRECISION Starting At: **\$26.00 ea**



## ER COLLET TRAYS



**PROTECT & ORGANIZE  
YOUR COLLETS!**

- Will not damage accurate locating surfaces, unlike steel stamped trays
- Protect expensive tooling—engineered from strong high impact plastic
- Sliding see through plastic cover
- Up to 40 collets per tray—holds a full set plus special & metric sizes
- Angled seat location to secure collet
- 5 Year Limited Warranty



**5C COLLET TRAY**  
76 Holes • 17-3/8" x 14" x 3-1/8"  
Part #: SIE-5C-76  
**\$30.67 ea**

Collet Series	Tray Cap.	Part Number	Price
ER11	40	SIE-SAER-11-40	\$ 35.65
ER16	40	SIE-SAER-16-40	\$ 35.65
ER20	40	SIE-SAER-20-40	\$ 38.73
ER25	40	SIE-SAER-25-40	\$ 38.73
ER32	40	SIE-SAER-32-40	\$ 39.97
ER40	28	SIE-SAER-40-28	\$ 39.97



## COLLET SETS

PRICES REDUCED OVER  
**50% OFF**  
2017 LIST PRICES!



- True inch and metric sets
- Many more set varieties in stock
- Includes wood tray
- **NEW LOWER PRICES!**

Series	Description	# Collets	Part Number	OLD Price	NEW PRICE!
ER-8	1/16" - 3/16" x 1/64"	9	08-SET9-INCH	\$126.00	\$ 118.00
ER-11	1/16" - 1/4" x 1/64"	13	11-SET13-INCH	\$182.00	\$ 105.00
ER-11	1mm - 7mm x .5mm	13	11-SET13	\$214.50	\$ 105.00
ER-16	1/16" - 3/8" x 1/32"	11	16-SET11-INCH	\$181.50	\$ 87.50
ER-16	1mm - 10mm x 1mm	10	16-SET10	\$165.00	\$ 78.75
ER-20	1/16" - 1/2" x 1/32"	15	20-SET15-INCH	\$270.00	\$ 136.50
ER-20	1mm - 13mm X 1mm	12	20-SET12	\$216.00	\$ 107.25
ER-25	1/16" - 5/8" x 1/32"	18	25-SET18-INCH	\$324.00	\$ 165.75
ER-32	3mm - 20mm x 1mm	18	32-SET18	\$324.00	\$ 174.25
ER-32	1/8" - 3/4" x 1/32"	21	32-SET21-INCH	\$378.00	\$ 205.00
ER-40	1/8" - 1" x 1/64"	15	40-SET15-INCH	\$337.50	\$ 157.50

**MTM TOOL SUPPLY**  
Industrial Tool Warehouse

Sales  
800.325.7096  
Fax  
800.327.1588



# ER COLLET EXTENSIONS

Straight Shank Collet Chucks • Includes Collet Nut

- For ER series collets
- Crafted from high grade alloy steel
- Precision ground shank
- TIR- 0.0001"
- Wrench flats extend full length of shank
- Collet nut included
- Available with mini, hex & spanner nuts
- Wrench sold separately



## ER SERIES

Collet Type	Shank Dia	Shank Length	Nut Dia	Nut Type	Shank Type	Part Number	Price EA
ER08	0.375	2.50	0.48	Mini	Round	S-E08R03-25N-R	\$83.50
ER08	0.375	3.50	0.48	Mini	Round	S-E08R03-35N-R	\$88.50
ER08	0.500	2.50	0.48	Mini	Round	S-E08R05-25N-R	\$83.50
ER08	0.500	2.50	0.48	Mini	Flatted	S-E08F05-25N-R	\$83.50
ER08	0.500	3.70	0.48	Mini	Round	S-E08R05-37N-R	\$84.50
ER08	0.500	3.70	0.48	Mini	Flatted	S-E08F05-37N-R	\$83.50
ER11	0.500	3.00	0.63	Mini	Round	S-E11R05-30N-R	\$77.06
ER11	0.500	3.00	0.75	Hex	Round	S-E11R05-30H-R	\$77.06
ER11	0.500	4.00	0.63	Mini	Flatted	S-E11F05-40N-R	\$75.06
ER11	0.500	6.00	0.63	Mini	Round	S-E11R05-60N-R	\$84.38
ER11	0.500	6.00	0.63	Mini	Flatted	S-E11F05-60N-R	\$84.38
ER11	0.500	6.00	0.75	Hex	Flatted	S-E11F05-60H-R	\$73.10
ER11	0.500	6.20	0.75	Hex	Round	S-E11R05-62H-R	\$73.10
ER11	0.625	2.00	0.63	Mini	Round	S-E11R06-20N-R	\$84.38
ER11	0.625	3.00	0.63	Mini	Round	S-E11R06-30N-R	\$84.38
ER11	0.625	3.00	0.75	Hex	Round	S-E11R06-30H-R	\$84.38
ER11	0.625	6.00	0.63	Mini	Round	S-E11R06-60N-R	\$84.38
ER11	0.625	6.20	0.75	Hex	Round	S-E11R06-62H-R	\$81.90
ER16	0.500	6.00	0.87	Mini	Round	S-E16R05-60N-R	\$99.50
ER16	0.625	3.00	0.87	Mini	Round	S-E16R06-30N-R	\$84.38
ER16	0.625	3.00	1.10	Hex	Round	S-E16R06-30H-R	\$76.50
ER16	0.625	3.70	1.10	Hex	Round	S-E16R06-37H-R	\$77.50
ER16	0.625	6.00	0.87	Mini	Round	S-E16R06-60N-R	\$94.83
ER16	0.625	6.00	0.87	Mini	Flatted	S-E16F06-60N-R	\$94.83
ER16	0.750	2.00	1.10	Hex	Round	S-E16R07-20H-R	\$72.00
ER16	0.750	2.50	1.10	Hex	Round	S-E16R07-25H-R	\$72.00
ER16	0.750	2.50	1.10	Hex	Flatted	S-E16F07-25H-R	\$72.00
ER16	0.750	3.00	0.87	Mini	Round	S-E16R07-30N-R	\$84.38
ER16	0.750	3.60	1.10	Hex	Round	S-E16R07-36H-R	\$72.00
ER16	0.750	4.00	1.10	Hex	Round	S-E16R07-40H-R	\$77.50
ER16	0.750	4.00	1.10	Hex	Flatted	S-E16F07-40H-R	\$77.50
ER16	0.750	5.20	0.87	Mini	Round	S-E16R07-52N-R	\$83.50
ER16	0.750	6.00	0.87	Mini	Flatted	S-E16F07-52N-R	\$83.50
ER16	0.750	6.00	1.10	Hex	Round	S-E16R07-60H-R	\$83.00
ER16	0.750	2.50	1.10	Hex	Flatted	S-E16F07-60H-R	\$83.00
ER16	1.00	2.50	1.10	Hex	Round	S-E16R10-25H-R	\$72.00
ER16	1.00	2.50	1.10	Hex	Flatted	S-E16F10-25H-R	\$70.00
ER16	1.00	4.00	1.10	Hex	Round	S-E16R10-40H-R	\$77.50
ER16	1.00	4.00	1.10	Hex	Flatted	S-E16F10-40H-R	\$77.50
ER16	1.00	6.00	1.10	Hex	Round	S-E16R10-60H-R	\$83.00
ER20	0.750	2.50	1.10	Mini	Round	S-E20R07-25N-R	\$83.25
ER20	0.750	2.50	1.34	Hex	Round	S-E20R07-25H-R	\$72.00
ER20	0.750	2.50	1.34	Hex	Flatted	S-E20F07-25H-R	\$72.00
ER20	0.750	4.00	1.10	Mini	Round	S-E20R07-40N-R	\$77.50

Collet Type	Shank Dia	Shank Length	Nut Dia	Nut Type	Shank Type	Part Number	Price EA
ER20	0.750	4.00	1.34	Hex	Round	S-E20R07-40H-R	\$77.50
ER20	0.750	6.00	1.34	Hex	Round	S-E20R07-60H-R	\$83.00
ER20	0.750	6.00	1.34	Hex	Flatted	S-E20F07-60H-R	\$83.00
ER20	1.00	2.50	1.34	Hex	Round	S-E20R10-25H-R	\$72.00
ER20	1.00	4.00	1.34	Hex	Round	S-E20R10-40H-R	\$77.50
ER20	1.00	5.20	1.10	Mini	Round	S-E20R10-52N-R	\$88.50
ER20	1.00	6.00	1.34	Hex	Round	S-E20R10-60H-R	\$83.00
ER25	0.500	4.00	1.65	Spanner	Round	S-E25R05-40S-R	\$83.00
ER25	0.750	2.50	1.65	Spanner	Round	S-E25R07-25S-R	\$77.50
ER25	0.750	2.50	1.65	Spanner	Flatted	S-E25F07-25S-R	\$77.50
ER25	0.750	4.00	1.65	Spanner	Round	S-E25R07-40S-R	\$83.00
ER25	0.750	4.00	1.65	Spanner	Flatted	S-E25F07-40S-R	\$83.00
ER25	0.750	6.00	1.65	Spanner	Round	S-E25R07-60S-R	\$88.50
ER25	0.750	6.00	1.65	Spanner	Flatted	S-E25F07-60S-R	\$86.50
ER25	1.00	2.50	1.65	Spanner	Round	S-E25R10-25S-R	\$77.50
ER25	1.00	2.50	1.65	Spanner	Flatted	S-E25F10-25S-R	\$75.50
ER25	1.00	2.50	1.38	Mini	Flatted	S-E25F10-25N-R	\$77.50
ER25	1.00	4.00	1.38	Mini	Round	S-E25R10-40N-R	\$83.00
ER25	1.00	4.00	1.65	Spanner	Round	S-E25R10-40S-R	\$83.00
ER25	1.00	4.00	1.65	Spanner	Flatted	S-E25F10-40S-R	\$83.00
ER25	1.00	6.00	1.65	Spanner	Round	S-E25R10-60S-R	\$88.50
ER25	1.00	6.00	1.65	Spanner	Flatted	S-E25F10-60S-R	\$88.50
ER32	1.00	2.00	1.97	Spanner	Round	S-E32R10-20S-R	\$83.00
ER32	1.00	2.50	1.97	Spanner	Round	S-E32R10-25S-R	\$83.00
ER32	1.00	2.50	1.97	Spanner	Flatted	S-E32F10-25S-R	\$81.00
ER32	1.00	4.00	1.97	Spanner	Round	S-E32R10-40S-R	\$88.50
ER32	1.00	4.00	1.97	Spanner	Flatted	S-E32F10-40S-R	\$86.50
ER32	1.00	6.00	1.97	Spanner	Round	S-E32R10-60S-R	\$94.00
ER32	1.00	6.00	1.97	Spanner	Flatted	S-E32F10-60S-R	\$94.00
ER32	1.25	2.00	1.97	Spanner	Round	S-E32R12-20S-R	\$83.00
ER32	1.25	2.50	1.97	Spanner	Round	S-E32R12-25S-R	\$83.00
ER32	1.25	4.00	1.97	Spanner	Round	S-E32R12-40S-R	\$88.50
ER32	1.25	4.00	1.97	Spanner	Flatted	S-E32F12-40S-R	\$86.50
ER32	1.25	6.00	1.97	Spanner	Round	S-E32R12-60S-R	\$94.00
ER40	1.00	2.50	2.48	Spanner	Round	S-E40R10-25S-R	\$94.00
ER40	1.00	2.50	2.48	Spanner	Flatted	S-E40F10-25S-R	\$94.00
ER40	1.00	4.00	2.48	Spanner	Round	S-E40R10-40S-R	\$99.50
ER40	1.00	4.00	2.48	Spanner	Flatted	S-E40F10-40S-R	\$99.50
ER40	1.00	6.00	2.48	Spanner	Round	S-E40R10-60S-R	\$103.50
ER40	1.25	2.50	2.48	Spanner	Round	S-E40R12-25S-R	\$94.00
ER40	1.25	4.00	2.48	Spanner	Round	S-E40R12-40S-R	\$99.50
ER40	1.25	4.00	2.48	Spanner	Flatted	S-E40F12-40S-R	\$99.50
ER40	1.25	6.00	2.48	Spanner	Round	S-E40R12-60S-R	\$103.50
ER40	1.25	6.00	2.48	Spanner	Flatted	S-E40F12-60S-R	\$103.00