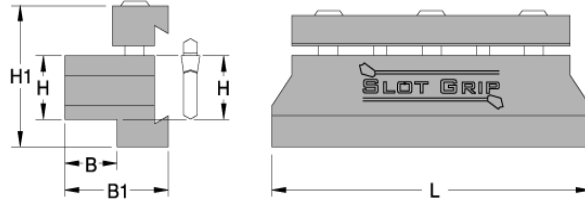


TOOL BLOCKS FOR PART-OFF BLADES

CUT-OFF TOOL BLOCKS

Slot Grip block toolholders are designed to hold Slot Grip and competitive cut-off blades firm and secure using a wedge locking system. Center height of the cutting edge and shank height are equal to allow easy set-up. Block toolholders are available in a wide range of sizes and are available in either a two piece design for versatility or one piece design for economy.



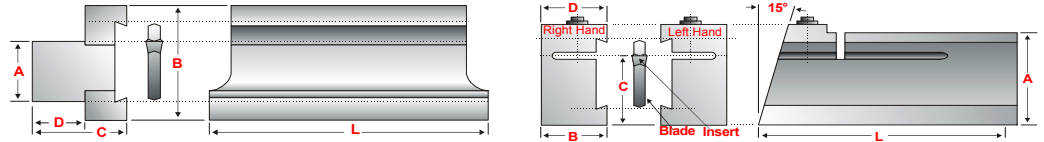
- For manual lathes
- For CNC turning centers
- Wedge locking system



Blade and Inserts Sold Separately

Description	H	H1	B	B1	L	Part Number	Price	Blade Used	Screw Used
SGTBN12,7-2	0.500	1.375	0.500	1.000	3.00	DN62970	\$145.45	_GIH19-2	A40467 10-24 x 1.0
SGTBN16-2	0.625	1.375	0.625	1.000	3.00	DN62971	\$145.45		
SGTBN16-5	0.625	1.750	0.625	1.250	3.50	DN62972	\$145.45	_GIH26-2	A40468
SGTBN19-5	0.750	2.000	0.750	1.375	3.50	DN62973	\$150.62	Thru SGIH26-6	1/4-20 x 1-1/4
SGTBN19-6	0.750	2.000	0.750	1.375	4.50	DN62974	\$153.26		
SGTBN25,4-6	1.000	2.125	0.875	1.500	4.50	DN62975	\$155.18	_GIH32-3	A40469
SGTBN31,8-6	1.250	2.375	1.125	1.750	4.50	DN62976	\$162.20	Thru SGIH32-9	1/4-20 x 1-1/2
SGTBN38,1-6	1.500	2.875	1.625	2.250	4.50	DN62977	\$217.56		

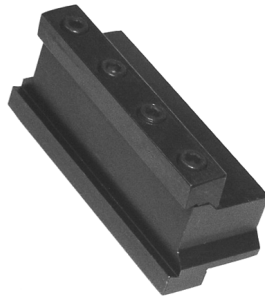
CUT-OFF TOOL BLOCKS



- Compatible with blades from Dorian, Ceratizit and other industry standard _GIH type blades
- Please see following page for inserts

NGTBN

A	B	C	D	L	Use Blade	Brand	Part Number	Price Each
5/8"	1-1/2"	1-5/16"	5/8"	3-7/16"	_GIH 26-2,3,4,5,6	CERATIZIT	NGTBN-16-5	\$110.98
3/4"	1-1/2"	1-7/16"	3/4"	3-7/16"	_GIH 26-2,3,4,5,6	USST	UGTBN-19-5	\$48.00
1"	1-7/8"	1-15/32"	25/32"	4-5/16"	_GIH 32-3,4,5,6	USST	UGTBN-25-6	\$62.00
1-1/4"	1-7/8"	1-13/16"	1-1/8"	4-5/16"	_GIH 32-3,4,5,6,R/L-9	CERATIZIT	NGTBN-32-6	\$141.02
1-1/2"	1-7/8"	2-27/64"	1-5/8"	4-5/16"	GIH 32-9	CERATIZIT	NGTBN-38-6	\$148.44

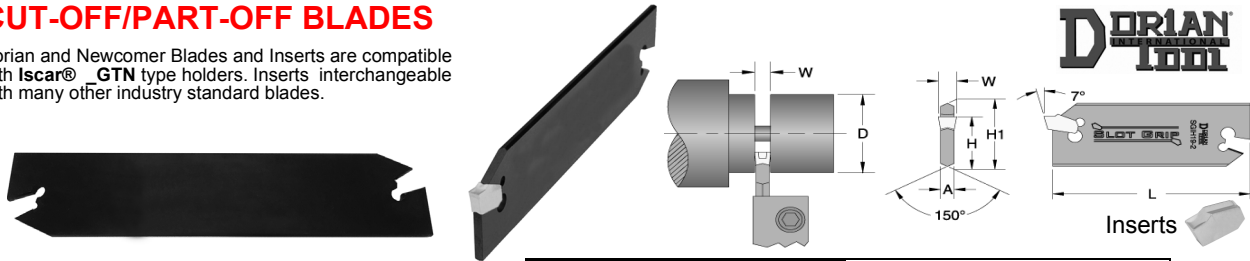


NGTBR/L

A	B	C	D	L	Use Blade	Right or Left	Brand	Part Number	Price Each
1"	3/4"	3/4"	43/64"	3-7/16"	_GIH 19-2	Right Left	CERATIZIT CERATIZIT	NGTBR-19-2 NGTBL-19-2	\$139.23 \$139.23
1-1/4"	25/32"	1"	19/32"	4-3/4"	_GIH 26-2,3,4,5,6	Right Left	CERATIZIT CERATIZIT	NGTBR-25-6 NGTBL-25-6	\$182.86 \$182.86

CUT-OFF/PART-OFF BLADES

Dorian and Newcomer Blades and Inserts are compatible with Iscar® _GTN type holders. Inserts interchangeable with many other industry standard blades.



Industry Reference #	W Inch	W mm	A	L	H	DORIAN			CERATIZIT			Insert Reference #
						Max Work Dia	Positive Stop Part Number	Price Each	Max Work Dia	Positive Stop Part Number	Price Each	
_GIH19-2	0.087	2	0.063	3.38	0.618	1.57"	DN62950	\$61.19	1.5"	NGIH-19-2-PS	\$105.80	_GT(N/R/L)-2
_GIH26-2	0.087	2	0.063	4.33	0.842	2.00"	DN62951	\$72.89	3.0"	NGIH-26-2-PS	\$101.26	_GT(N/R/L)-2
_GIH26-3	0.122	3	0.094	4.33	0.842	3.00"	DN62952	\$72.89	3.0"	NGIH-26-3-PS	\$74.60	_GT(N/R/L)-3
_GIH26-4	0.161	4	0.125	4.33	0.842	3.15"	DN62953	\$72.89	3.0"	NGIH-26-4-PS	\$102.28	_GT(N/R/L)-4
_GIH26-5	0.201	5	0.156	4.33	0.842	3.15"	DN62954	\$72.89	3.0"	NGIH-26-5-PS	\$87.18	_GT(N/R/L)-5
_GIH26-6	0.252	6	0.203	4.33	0.842	3.15"	DN62955	\$72.89	3.0"	NGIH-26-6-PS	\$66.96	_GT(N/R/L)-6
_GIH32-3	0.122	3	0.094	5.90	0.984	3.94"	DN62956	\$84.31	4.0"	NGIH-32-3-PS	\$82.99	_GT(N/R/L)-3
_GIH32-4	0.161	4	0.125	5.90	0.984	3.94"	DN62957	\$84.31	4.0"	NGIH-32-4-PS	\$95.68	_GT(N/R/L)-4
_GIH32-5	0.201	5	0.156	5.90	0.984	4.71"	DN62958	\$84.31	5.0"	NGIH-32-5-PS	\$109.08	_GT(N/R/L)-5
_GIH32-6	0.252	6	0.203	5.90	0.984	4.72"	DN62959	\$84.31	5.0"	NGIH-32-6-PS	\$107.75	_GT(N/R/L)-6
_GIH32-8	0.315	8	0.268	5.90	0.984	5.51"	DN62960	\$124.93	5.0"	NGIH-32-8-PS	\$96.42	_GT(N/R/L)-8
_GIH32-9	0.378	9	0.312	5.90	0.984	5.51"	DN62961	\$124.93	5.0"	NGIH-32-9-PS	\$99.27	_GT(N/R/L)-9

Call Us Today For All Of Your Machine Tool Needs!

CHUCK JAWS
LATHE WORKHOLDING

MACHINE VISES
VISE JAWS

RETENTION KNOBS
ER, DA, TG COLLETS

TOOLHOLDERS
TAP HOLDERS

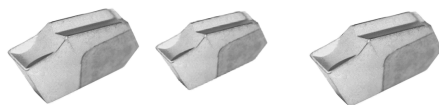
INDEXABLE DRILLS
TURNING & BORING

ENDMILLS, DRILLS
TAPS & REAMERS

ABRASIVES
MEASURING TOOLS

MRO & SAFETY
FLAT STOCK/DRILL ROD

CUT-OFF INSERTS



Insert Ref#	Insert Size	W width ±.004"	W width mm.	L Lead Angle	Newcomer Inserts						Dorian Tools Inserts					
					UnCoated C2	Price each	Uncoated C5	Price each	Coated C5	Price each	Uncoated C2	Price each	Uncoated C5	Price each	Coated C5-C6	Price each
GTN-2	2	0.087	2mm	0°	CI-201	\$5.67	CI-301	\$6.24	CI-401	\$8.09	DN82220	\$7.03	DN82221	\$7.03	DN82222	\$9.59
GTR-2-8	2	0.087	2mm	8°	-	-	CI-304	\$7.20	-	-	DN82248	\$7.03	DN82249	\$7.03	DN82250	\$9.59
GTL-2-8	2	0.087	2mm	8°	CI-205	\$6.53	CI-305	\$7.20	CI-405	\$8.90	DN82276	\$7.03	DN82277	\$7.03	DN82278	\$9.59
GTN-2.4	2	0.093	2mm	0°	CI-208	\$5.67	CI-308	\$6.24	CI-408	\$8.09	-	-	-	-	-	-
GTR-2.4-8	2	0.093	2mm	8°	CI-211	\$6.53	CI-311	\$7.20	CI-411	\$8.90	-	-	-	-	-	-
GTL-2.4-8	2	0.093	2mm	8°	CI-212	\$6.53	CI-312	\$7.20	CI-412	\$8.90	-	-	-	-	-	-
GTN-3	3	0.12	3mm	0°	CI-215	\$5.67	CI-315	\$6.24	CI-415	\$8.09	DN82224	\$7.03	DN82225	\$7.03	DN82226	\$9.59
GTR-3-8	3	0.12	3mm	8°	CI-218	\$6.53	-	-	-	-	DN82252	\$7.03	DN82253	\$7.03	DN82254	\$9.59
GTL-3-8	3	0.12	3mm	8°	-	-	CI-319	\$7.20	-	-	DN82280	\$7.03	DN82281	\$7.03	DN82282	\$9.59
GTN-4	4	0.16	4mm	0°	CI-222	\$6.77	CI-322	\$7.47	CI-422	\$9.18	DN82228	\$7.74	DN82229	\$7.74	DN82230	\$9.90
GTR-4-8	4	0.16	4mm	8°	CI-225	\$7.59	CI-325	\$8.36	-	-	DN82256	\$7.74	DN82257	\$7.74	DN82258	\$9.90
GTL-4-8	4	0.16	4mm	8°	CI-226	\$7.59	CI-326	\$8.36	CI-426	\$10.19	DN82284	\$7.74	DN82285	\$7.74	DN82286	\$9.90
GTN-4.8	4	0.187	4mm	0°	CI-229	\$7.59	CI-329	\$8.31	CI-429	\$9.72	-	-	-	-	-	-
GTR-4.8-8	4	0.187	4mm	8°	CI-232	\$8.29	CI-332	\$9.13	CI-432	\$10.59	-	-	-	-	-	-
GTL-4.8-8	4	0.187	4mm	8°	CI-233	\$8.29	CI-333	\$9.13	CI-433	\$10.59	-	-	-	-	-	-
GTN-5	5	0.2	5mm	0°	CI-238	\$8.29	CI-338	\$8.31	CI-438	\$9.72	DN82232	\$8.47	DN82233	\$8.47	DN82234	\$9.91
GTR-5-8	5	0.2	5mm	8°	CI-239	\$8.29	CI-339	\$9.13	CI-439	\$10.59	DN82260	\$8.47	DN82261	\$8.47	DN82262	\$9.91
GTL-5-8	5	0.2	5mm	8°	CI-240	\$8.29	CI-340	\$9.13	CI-440	\$10.59	DN82288	\$8.47	DN82289	\$8.47	DN82290	\$9.91
GTN-6	6	0.25	6mm	0°	CI-243	\$8.65	CI-343	\$9.53	CI-443	\$11.20	DN82236	\$9.34	DN82237	\$9.34	DN82238	\$12.54
GTR-6-8	6	0.25	6mm	8°	CI-246	\$9.44	CI-346	\$10.41	CI-446	\$12.07	DN82264	\$9.34	DN82265	\$9.34	DN82266	\$12.54
GTL-6-8	6	0.25	6mm	8°	CI-247	\$9.44	CI-347	\$10.41	CI-447	\$12.07	DN82292	\$9.34	DN82293	\$9.34	DN82294	\$12.54
GTN-8	8	0.315	8mm	0°	CI-250	\$12.36	CI-350	\$13.60	CI-450	\$15.71	DN82240	\$14.67	DN82241	\$14.67	DN82242	\$18.57
GTR-8-4	8	0.315	8mm	4°	CI-251	\$13.21	CI-351	\$14.54	CI-451	\$16.59	DN82268	\$14.67	DN82269	\$14.67	DN82270	\$18.57
GTL-8-4	8	0.315	8mm	4°	CI-252	\$13.21	CI-352	\$14.54	CI-452	\$16.59	DN82296	\$14.67	DN82297	\$14.67	DN82298	\$18.57
GTN-9	9	0.375	9mm	0°	CI-257	\$16.15	CI-357	\$17.79	CI-457	\$20.20	DN82244	\$16.68	DN82245	\$16.68	DN82246	\$19.24
GTR-9-4	9	0.375	9mm	4°	CI-258	\$16.99	CI-358	\$18.74	CI-458	\$21.12	DN82272	\$16.68	DN82273	\$16.68	DN82274	\$19.24
GTL-9-4	9	0.375	9mm	4°	CI-259	\$16.99	CI-359	\$18.69	CI-459	\$21.12	DN82300	\$16.68	DN82301	\$16.68	DN82302	\$19.24

CUT-OFF TOOL KITS

Each kit consists of a tool block, a blade and 10 N52 or PV52 carbide inserts. A New-Grip wrench is also included for removing inserts from the blade and an Allen wrench for positioning and removing the blade from the block.



B



#2 New-Grip Starter Kit

- 1 ea NGTBN-16-5 (5/8") Block
- 1 ea NGIH-26-2 Blade
- 10 ea NGTN-2-N52 Inserts
- 1ea New-Grip Wrench
- 1 ea Allen Wrench

Part # NEW-KIT2
\$300.76

#4 New-Grip Starter Kit

- 1 ea NGTBN-16-5 (5/8") Block
- 1 ea NGIH-26-3-PS Blade
- 10 ea NGTN-3-PV52 Inserts
- 1ea New-Grip Wrench
- 1 ea Allen Wrench

Part # NEW-KIT4
\$330.26

#3 New-Grip Starter Kit

- 1 ea NGTBN-19-5 (3/4") Block
- 1 ea NGIH-26-3 Blade
- 10 ea NGTN-3-N52 Inserts
- 1ea New-Grip Wrench
- 1 ea Allen Wrench

Part # NEW-KIT3
\$282.63

#5 New-Grip Starter Kit

- 1 ea NGTBN-25-6 (1") Block
- 1 ea NGIH-32-3-PS Blade
- 10 ea NGTN-3-PV52 Inserts
- 1ea New-Grip Wrench
- 1 ea Allen Wrench

Part # NEW-KIT5
\$346.97

PART-OFF TOOL SETS

Includes Tool Block, Blade & Inserts



- Buy the kit and save time and money!
- Compatible with industry standard brands
- Sets include tool block, part off blade and (10) CVD coated general purpose carbide inserts, suitable for steels/stainless with 0° lead angle



BLADE & (10) INSERTS SET

Blade Size	Blade Reference #	Insert Size	Insert Width	Blade + Inserts Set Part Number	Set Price
1.02" 26mm	26-2	GTN-2	0.087	BI-6895-722	\$106.92
	26-3	GTN-3	0.122	BI-6895-723	\$106.92
1.26" 32mm	32-4	GTN-4	0.161	BI-6895-734	\$116.33
	32-5	GTN-5	0.201	BI-6895-735	\$123.26

TOOL BLOCK, BLADE & (10) INSERTS SET

Blade Size	Blade Reference #	Insert Size	Block Reference #	Complete Set Part Number	Set Price
1.02" 26mm	26-3	GTN-3	19-5 3/4" shank	BI-6895-903	\$185.63
	26-4	GTN-4		BI-6895-904	\$188.10
	26-5	GTN-5		BI-6895-905	\$194.54
1.26" 32mm	32-3	GTN-3	19-6 3/4" shank	BI-6895-913	\$196.02
	32-4	GTN-4		BI-6895-914	\$198.50
1.26" 32mm	32-3	GTN-3	25-6 1" shank	BI-6895-923	\$196.02
	32-4	GTN-4		BI-6895-924	\$198.50
	32-5	GTN-5		BI-6895-925	\$205.43

Call Us Or Visit Our Website For Our Complete Selection!

LATHE CHUCKS
LIVE CENTERS
VISE ACCESSORIES
VISE JAWS
STRAIGHT SHANK COLLET HOLDERS
TAP HOLDERS
DRILL CHUCKS
CARBIDE INSERTS
THREADING/GROOVING
CUTTING TOOLS
MACHINERY
PRECISION TOOLS
DEBURRING
COOLANT/FLUIDS
TOOL STORAGE