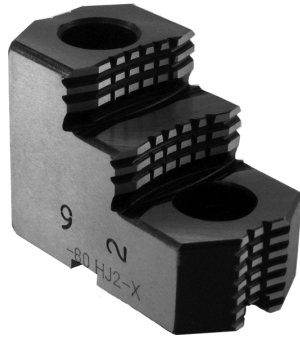
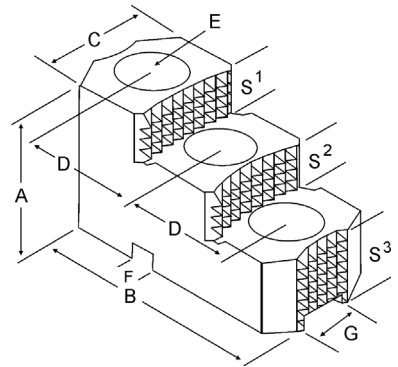


HARD JAWS-Acme & Square Key Serrated

HARD JAWS ACME & SQUARE KEY SERRATED



- FEATURES:**
- Designed for first operation roughing, expect standard runout between **0.005-0.010**
 - Reversible-suitable for OD & ID workholding.
 - **XTRA BITE** -very aggressive bite. Has conical teeth for extra gripping power and ground body to provide improved runout.



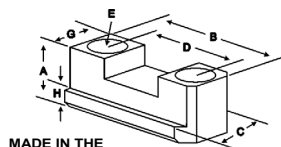
Acme Key Serrated Hard Jaws

GROUP	Chuck Size	Critical Dimensions											Part Number	Price Per Set		
		Groove Width G	Tongue Width F	Screw Size E	Hole Space D	Tap Hole	Width Inch C	OAL Inch B	Height Inch A	No. of Holes	No. of Steps	Top Step Ht S1			Mid Step Ht S2	Bot Step Ht S3
AI-07-1/2-17	10	0.750	1.031	1/2	1.750	5/16-18	1.750	4.250	2.480	2	2	0.600	0.600	1.280	AC-100HJ2-X	\$665.39
AI-08-5/8-20	12	0.875	1.031	5/8	2.000	5/16-18	1.750	4.875	2.469	2	2	0.550	0.550	1.369	AC-120HJ2-X	\$855.50
AI-10-3/4-25	15 & UP	1.000	1.531	3/4	2.500	3/8-16	2.500	5.500	3.469	2	2	0.950	0.950	1.569	AC-150HJ2-X	\$1,007.60

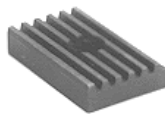
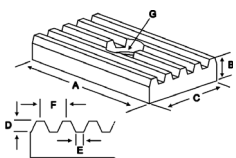
Square Key Serrated Hard Jaws

GROUP	Chuck Size	Critical Dimensions											Part Number	Price Per Set		
		Groove Width G	Tongue Width F	Screw Size E	Hole Space D	Tap Hole	Width Inch C	OAL Inch B	Height Inch A	No. of Holes	No. of Steps	Top Step Ht S1			Mid Step Ht S2	Bot Step Ht S3
SI-07-1/2-17	12	0.750	0.994	1/2	1.750	5/16-18	1.750	4.875	2.469	2	2	0.650	0.650	1.169	SP-120HJ2-X	\$665.39
SI-07-5/8-17	12	0.750	0.994	5/8	1.750	5/16-18	1.750	4.875	2.469	2	2	0.650	0.650	1.169	SP-125HJ2-X	\$665.39
SI-10-3/4-25	15 & UP	1.000	1.488	3/4	2.500	3/8-16	2.500	5.500	3.469	2	2	0.950	0.950	1.569	SP-150HJ2-X	\$950.56

ACME SERRATED KEY TYPE JAW NUTS & MASTER KEYS

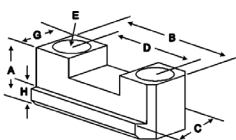


Chuck Size	Critical Dimensions						2 Screws Included With Each Jaw Nut				
	Heel Height H	Groove Width G	Screw Size E	Holes Space D	Hght Inch A	Width Inch C	Length Inch B	Jaw Nut Part Number	Price Each	Screw Part Number	Price Each
10	0.380	0.677	1/2-13	1.750	0.641	0.940	2.50	AC-100JN	\$55.92	S1/213150	\$2.25
12	0.440	0.801	5/8-11	2.000	0.744	1.060	3.00	AC-125JN	\$58.49	S5/811150	\$3.25
15 - 18	0.550	0.933	3/4-10	2.500	0.930	1.250	3.50	AC-155JN	\$61.66	S3/410175	\$4.25

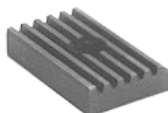
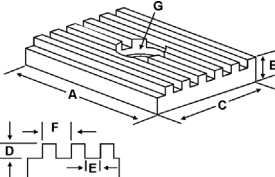


Chuck Size	Critical Dimensions				Width Inch C	Height Inch B	Length Inch A	Master Key Part Number	Price Each
	Screw Size G	Pitch F	Slot E	Depth D					
10-12	5/16	0.250	0.093	0.130	1.030	1/2"	1.687	AC-120AK	\$39.99
10-12	3/8	0.250	0.093	0.130	1.187	1/2"	2.000	AC-125AK	\$46.14
15-18	3/8	0.250	0.093	0.130	1.530	1/2"	2.000	AC-150AK	\$49.21
15-18	3/8	0.250	0.093	0.130	1.530	1/2"	2.437	AC-180AK	\$49.21

SQUARE SERRATED KEY TYPE JAW NUTS & MASTER KEYS



Chuck Size	Critical Dimensions						2 Screws Included With Each Jaw Nut				
	Heel Height H	Groove Width G	Screw Size E	Hole Space D	Hght Inch A	Width Inch C	Length Inch B	Jaw Nut Part Number	Price Each	Screw Part Number	Price Each
10 - 12	0.375	0.748	1/2-13	1.750	1.000	1.000	2.438	SP-100JN	\$55.04	S1/213150	\$2.25
10 - 12	0.375	0.748	5/8-11	1.750	1.000	1.000	2.500	SP-125JN	\$55.04	S5/811150	\$3.25
15 - 18	0.438	1.000	3/4-10	2.500	1.250	1.250	3.750	SP-155JN	\$60.20	S3/410175	\$4.25



Chuck Size	Critical Dimensions				Width Inch C	Hght Inch B	Length Inch A	Master Key Part Number	Price Each
	Screw Size G	Pitch F	Slot E	Depth D					
10 - 12	5/16	0.250	0.124	0.130	.993	0.500	1.688	SP-120SQK	\$28.48
15 - 18	3/8	0.250	0.124	0.130	1.487	0.500	2.000	SP-150SQK	\$36.84
15 - 18	3/8	0.250	0.124	0.130	1.487	0.500	2.250	SP-180SQK	\$32.75

Call Us Today For All Of Your Machine Tool Needs!