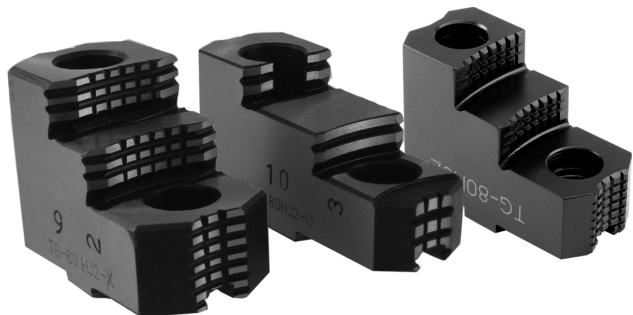


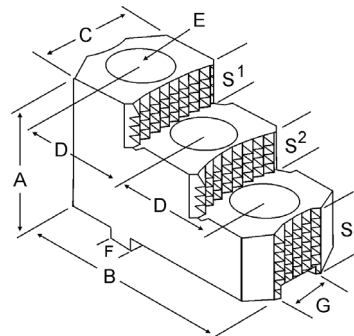
HARD JAWS-American Standard Tongue & Groove

HARD JAWS AMERICAN STANDARD TONGUE & GROOVE



FEATURES:

- Designed for first operation roughing, expect standard runout between 0.005-0.010
- Reversible-suitable for OD & ID workholding.
- **GRIP-RITE-OEM** style hard jaws have ground tips and provide better runout.
- **XTRA BITE** -very aggressive bite. Has conical teeth for extra gripping power and ground body to provide improved runout.
- **SHARK JAWS** have conical teeth for extra gripping power and black oxide for long life. Ideal for castings and scaly material. Made in the USA.



XTRA BITE (-X)
Very aggressive grip, ground body and sides for improved runout.



GRIP-RITE (-U)
OEM Style with ground tips and sides for improved runout.



SHARK JAWS
Conical teeth for gripping, black oxide for long life. Made in the USA.

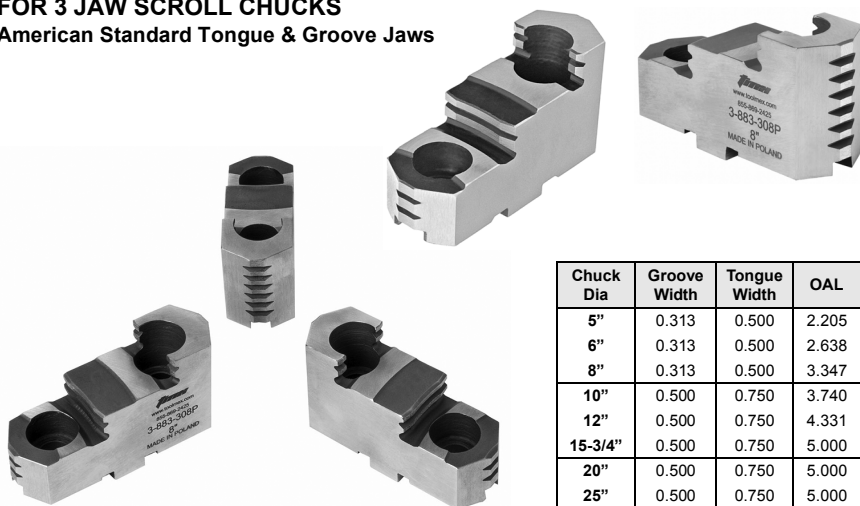
Critical Dimensions

Group	Chuck Size	Type	Groove Width G	Tongue Width F	Screw Size E	Hole Space D	Width Inch C	OAL Inch B	Height Inch A	No. of Holes	No. of Steps	Top Step Ht S1	Mid Step Ht S2	Bot Step Ht S3	Part Number	Price Per Set	Code
TI-31-3/8-15	6	MEDIUM DUTY	0.312	0.500	3/8	1.500	1.035	2.834	1.511	2	2	0.354	0.354	0.803	TG-60HJ2-U	\$282.80	E
							1.500	2.780	1.969	2	2	0.530	0.530	0.909	TG-60HJ2-X	\$297.68	E
TI-31-3/8-17	8	MEDIUM DUTY	0.312	0.500	3/8	1.750	1.250	2.875	2.000	2	2	0.600	0.360	1.040	TG-80HJ2	\$359.60	D
							1.114	3.227	1.629	2	2	0.394	0.394	0.843	TG-80HJ2-U	\$307.03	E
							1.500	3.287	1.969	2	2	0.530	0.530	0.909	TG-80HJ2-X	\$323.19	E
TI-50-1/2-21	10	MEDIUM DUTY	0.500	0.750	1/2	2.125	1.750	3.770	2.500	2	2	0.688	0.440	1.380	TG-100HJ2	\$378.53	D
							1.389	4.034	2.063	2	2	0.551	0.551	0.961	TG-100HJ2-U	\$323.19	E
							1.750	3.920	2.469	2	2	0.650	0.650	1.169	TG-100HJ2-X	\$340.20	E
TI-50-1/2-25	12	MEDIUM DUTY	0.500	0.750	1/2	2.500	1.750	4.500	2.500	2	2	0.680	0.440	1.380	TG-120HJ2	\$511.01	D
							1.586	4.585	2.063	2	2	0.591	0.591	0.882	TG-120HJ2-U	\$436.31	E
							1.750	4.550	2.500	2	2	0.650	0.650	1.200	TG-120HJ2-X	\$459.27	E
TI-50-5/8-25		HEAVY DUTY	0.500	0.750	5/8	2.500	1.750	4.550	2.500	2	2	0.650	0.650	1.200	TG-125HJ2-X	\$493.29	E
TI-50-5/8-30	15 & UP	MEDIUM DUTY	0.500	0.750	5/8	3.000	1.980	5.392	2.613	2	2	0.551	0.551	1.511	TG-150HJ2-U	\$533.26	E
							2.500	5.350	3.469	2	2	0.950	0.950	1.569	TG-150HJ2-X	\$561.33	E
TI-50-3/4-30	15 & UP	HEAVY DUTY	0.500	0.750	3/4	3.000	2.500	5.350	3.469	2	2	0.950	0.950	1.569	TG-155HJ2-X	\$623.70	E

OEM HARD TOP JAWS

FOR 3 JAW SCROLL CHUCKS

American Standard Tongue & Groove Jaws



Hard Jaws For 4 & 6 Jaw Chucks Also Available!



Chuck Dia	Groove Width	Tongue Width	OAL	Height	BISON		TMX	
					Part Number	Price Per Set	Part Number	Price Per Set
5"	0.313	0.500	2.205	1.516	TG-50HJ2-BI	\$188.10	TG-50HJ2-T	\$159.98
6"	0.313	0.500	2.638	1.634	TG-60HJ2-BI	\$230.40	TG-60HJ2-T	\$158.82
8"	0.313	0.500	3.347	1.713	TG-80HJ2-BI	\$232.20	TG-80HJ2-T	\$176.71
10"	0.500	0.750	3.740	2.023	TG-100HJ2-BI	\$271.80	TG-100HJ2-T	\$200.44
12"	0.500	0.750	4.331	2.165	TG-120HJ2-BI	\$334.80	TG-120HJ2-T	\$246.25
15-3/4"	0.500	0.750	5.000	2.539	TG-150HJ2-BI	\$456.30	TG-150HJ2-T	\$329.97
20"	0.500	0.750	5.000	2.933	TG-200HJ2-BI	\$761.40	TG-200HJ2-T	\$602.97
25"	0.500	0.750	5.000	3.228	TG-250HJ2-BI	\$907.20	-	-
32"	0.500	0.750	5.000	3.228	TG-250HJ2-BI	\$907.20	-	-

Call Us Or Visit Our Website For Our Complete Selection!