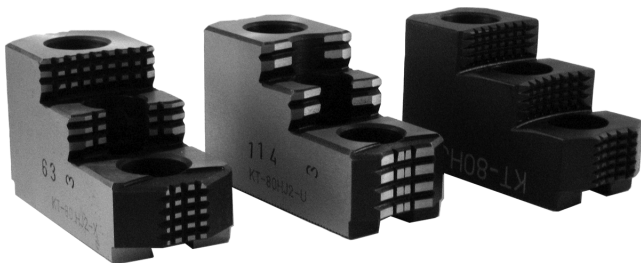


# HARD JAWS-1.5mm X 60° Serrations

## 1.5mm x 60° Serration Hard Jaws

For Kitagawa®, Samchully® Strong®, MMK & Howa Chucks



### FEATURES:

- Designed for first operation roughing, expect standard runout between **0.005-0.010**
- Reversible-suitable for OD & ID workholding.
- **GRIP-RITE/OEM Style** hard jaws have ground tips and provide better runout.
- **XTRA BITE** -very aggressive bite. They have conical teeth for extra gripping power and ground body to provide improved runout.
- **SHARK JAWS** have conical teeth for extra gripping power and black oxide for long life. Ideal for castings! Made in the USA.
- 1 & 2 step jaws available.

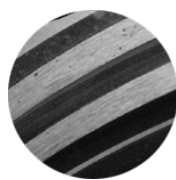
**Need Help Finding The Correct Chuck Jaws? See Our "Easy Jaw Finder" On Pages 622-634**

We offer one of the largest selections of Hard Jaws in the USA. For your convenience, we offer 3 unique styles of hard jaws. Choose the best fit for your application!



### XTRA BITE (-X)

Very aggressive grip, ground body and sides for improved runout.



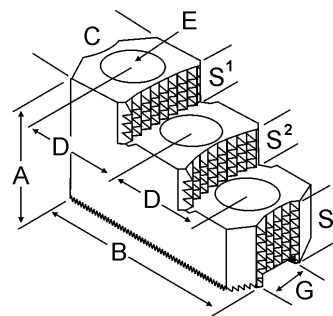
### GRIP-RITE (-U)/OEM STYLE

with ground tips and sides for improved runout.



### SHARK JAW

Conical teeth for gripping, black oxide for long life. Ideal for castings and scaly material. Made in the USA.



### Critical Dimensions

Group Number	Chuck Size	Groove Width G	Screw Size E	Hole Space D	Width Inch C	OAL Inch B	Height Inch A	No. of Holes	No. of Steps	Top Step Ht S1	Mid Step Ht S2	Bot Step Ht S3	Part Number	Price Per Set	Style	Code
<b>K1-11-25</b>	<b>6</b>	<b>0.433 (11mm)</b>	<b>8mm</b>	<b>0.985 (25mm)</b>	1.250	3.000	1.969	3	2	0.500	0.500	0.969	<b>SG-60HJ2-X</b>	<b>\$307.80</b>	XTRA-BITE	E
<b>K1-12-20</b>	<b>6</b>	<b>0.472 (12mm)</b>	<b>10mm</b>	<b>0.787 (20mm)</b>	1.220	2.900	2.000	3	1	0.500	-	1.000	<b>KT-60HJ1</b>	<b>\$355.56</b>	Shark Jaws	D
Kitagawa BB-06,B-06, B-206, BT-06					1.220	2.646	1.423	3	1	0.359	-	1.064	<b>KT-60HJ1-U</b>	<b>\$273.18</b>	OEM Style	E
					1.220	2.900	2.000	3	2	0.500	0.500	1.000	<b>KT-60HJ2</b>	<b>\$355.56</b>	Shark Jaws	D
					1.220	2.728	1.740	3	2	0.402	0.402	0.936	<b>KT-60HJ2-U</b>	<b>\$245.75</b>	OEM Style	E
					1.250	3.000	1.969	3	2	0.500	0.500	0.969	<b>KT-60HJ2-X</b>	<b>\$256.55</b>	XTRA-BITE	E
<b>K1-14-25</b>	<b>8</b>	<b>0.551 (14mm)</b>	<b>12mm</b>	<b>0.984 (25mm)</b>	1.500	3.300	2.000	3	1	0.500	-	1.000	<b>KT-80HJ1</b>	<b>\$420.66</b>	Shark Jaws	D
8" Kitagawa B-08,B-208, MMK ZA6-8, HA6-8					1.382	3.402	1.669	3	1	0.591	-	1.078	<b>KT-80HJ1-U</b>	<b>\$323.19</b>	OEM Style	E
					1.500	3.300	2.000	3	2	0.500	0.500	1.000	<b>KT-80HJ2</b>	<b>\$420.66</b>	Shark Jaws	D
					1.382	3.409	2.000	3	2	0.465	0.465	1.070	<b>KT-80HJ2-U</b>	<b>\$294.53</b>	OEM Style	E
					1.500	3.500	1.969	3	2	0.530	0.530	0.909	<b>KT-80HJ2-X</b>	<b>\$312.71</b>	XTRA-BITE	E
<b>K1-16-25</b>	<b>8</b>	<b>0.630 (16mm)</b>	<b>12mm</b>	<b>0.984 (25mm)</b>	1.500	3.300	2.000	3	2	0.500	0.500	1.000	<b>HO-80HJ2</b>	<b>\$439.53</b>	Shark Jaws	D
<b>K1-16-30</b>	<b>10</b>	<b>0.630 (16mm)</b>	<b>12mm</b>	<b>1.181 (30mm)</b>	1.750	4.000	2.000	3	1	0.750	-	1.250	<b>KT-100HJ1</b>	<b>\$500.80</b>	Shark Jaws	D
B-10, B-210, BT-10/210					1.579	3.980	1.737	3	1	0.635	-	1.102	<b>KT-100HJ1-U</b>	<b>\$384.75</b>	OEM Style	E
HA6/8-10, ZA6-10, ZA8-10					1.750	4.250	2.469	3	1	1.250	-	1.219	<b>KT-100HJ1-X</b>	<b>\$405.00</b>	XTRA-BITE	E
					1.750	4.000	2.500	3	2	0.650	0.500	1.350	<b>KT-100HJ2</b>	<b>\$500.80</b>	Shark Jaws	D
					1.579	3.980	2.130	3	2	0.520	0.520	1.090	<b>KT-100HJ2-U</b>	<b>\$336.60</b>	OEM Style	E
					1.750	4.250	2.469	3	2	0.650	0.650	1.169	<b>KT-100HJ2-X</b>	<b>\$370.44</b>	XTRA-BITE	E
<b>K1-16-32</b>	<b>10</b>	<b>0.630 (16mm)</b>	<b>12mm</b>	<b>1.266 (32mm)</b>	1.500	4.125	2.000	3	2	0.650	0.500	1.350	<b>MT-100HJ2</b>	<b>\$486.63</b>	Shark Jaws	D
<b>K1-18-30</b>	<b>12</b>	<b>0.709 (18mm)</b>	<b>14mm</b>	<b>1.181 (30mm)</b>	1.750	4.600	2.000	3	1	0.750	-	1.250	<b>KT-120HJ1</b>	<b>\$540.84</b>	Shark Jaws	D
B-12, BT-12, HA8-12, MMK-12, ZA8-12					1.969	4.091	2.051	3	1	0.669	-	1.382	<b>KT-120HJ1-U</b>	<b>\$415.53</b>	OEM Style	E
					2.000	4.875	2.469	3	1	1.300	-	1.168	<b>KT-120HJ1-X</b>	<b>\$437.40</b>	XTRA-BITE	E
					1.750	4.600	2.500	3	2	0.650	0.500	1.350	<b>KT-120HJ2</b>	<b>\$540.84</b>	Shark Jaws	D
					2.000	4.042	2.480	3	2	0.543	0.442	1.495	<b>KT-120HJ2-U</b>	<b>\$391.99</b>	OEM Style	E
					2.000	4.875	2.469	3	2	0.650	0.650	1.169	<b>KT-120HJ2-X</b>	<b>\$415.42</b>	XTRA-BITE	E
					1.750	4.600	2.500	3	2	0.650	0.500	1.350	<b>KT-128HJ2</b>	<b>\$540.84</b>	Shark Jaws	D
<b>K1-21-30</b>	<b>12</b>	<b>0.827 (21mm)</b>	<b>16mm</b>	<b>1.181 (30mm)</b>	2.000	4.042	2.480	3	2	0.543	0.442	1.495	<b>KT-128HJ2-U</b>	<b>\$390.92</b>	OEM Style	E
B-212 BT-212					2.000	4.875	2.469	3	2	0.650	0.650	1.169	<b>KT-128HJ2-X</b>	<b>\$416.29</b>	XTRA-BITE	E
					2.500	5.400	3.000	3	2	0.730	0.730	1.540	<b>KT-150HJ2</b>	<b>\$701.09</b>	Shark Jaws	D
<b>K1-22-43</b>	<b>15 &amp; 18</b>	<b>0.866 (22mm)</b>	<b>20mm</b>	<b>1.693 (43mm)</b>	2.448	5.850	3.385	3	2	0.827	0.827	1.731	<b>KT-150HJ2-U</b>	<b>\$504.90</b>	OEM Style	E
B-15, B-18, BT-15					2.500	5.500	3.500	3	2	0.950	0.950	1.600	<b>KT-150HJ2-X</b>	<b>\$554.85</b>	XTRA-BITE	E
					2.500	5.400	3.000	3	2	0.730	0.730	1.540	<b>KT-151HJ2</b>	<b>\$701.09</b>	Shark Jaws	D
<b>K1-26-43</b>	<b>15 &amp; 18</b>	<b>1.005 (25.5mm)</b>	<b>20mm</b>	<b>1.693 (43mm)</b>	2.448	5.850	3.385	3	2	0.827	0.827	1.731	<b>KT-151HJ2-U</b>	<b>\$538.65</b>	OEM Style	E
B-215 N18, N15					2.500	5.500	3.500	3	2	0.950	0.950	1.600	<b>KT-151HJ2-X</b>	<b>\$554.85</b>	XTRA-BITE	E
					2.500	5.500	3.500	3	2	0.950	0.950	1.600	<b>KT-151HJ2-X</b>	<b>\$554.85</b>	XTRA-BITE	E

Call Us Or Visit Our Website For Our Complete Selection!

LATHE CHUCKS  
LIVE CENTERS

WISE JAWS  
WISE ACCESSORIES

STRAIGHT SHANK  
COLLET HOLDERS

TAP HOLDERS  
DRILL CHUCKS

CARBIDE INSERTS  
THREADING/GROOVING

CUTTING TOOLS  
MACHINERY

PRECISION TOOLS  
DEBURRING

COOLANT/FLUIDS  
TOOL STORAGE