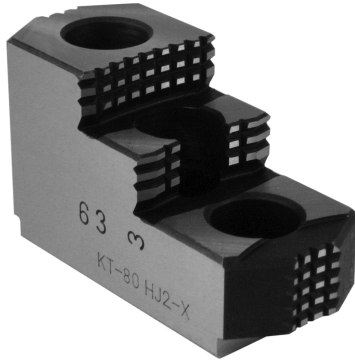


# HARD JAWS-3.0mm x 60° & 1/16" x 90° Serrations

## HARD JAWS 3.0mm x 60° & 1/16" x 90° Serrations

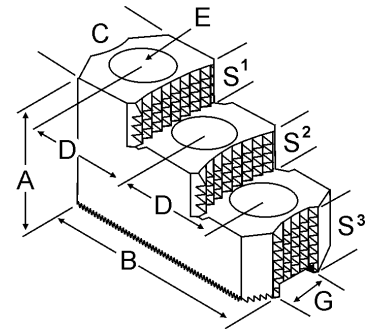


**FEATURES:**

- Designed for first operation roughing, expect standard runout between **0.005-0.010**
- Reversible-suitable for OD & ID workholding.
- **XTRA BITE** -very aggressive bite. Has conical teeth for extra gripping power and ground body to provide improved runout.



**XTRA BITE (-X)**  
Very aggressive grip, ground body and sides for improved runout.



### 3.0mm x 60° Serrations Hard Jaws-For Kitagawa, MMK, Howa & Other Chucks

Critical Dimensions														
Group Number	Chuck Size	Groove Width G	Screw Size E	Hole Space D	Width Inch C	OAL Inch B	Height Inch A	No. of Holes	No. of Steps	Top Step Ht S1	Mid Step Ht S2	Bot Step Ht S3	Part Number	Price Per Set
K3-16-30	10	0.630 (16mm)	12mm	1.181 (30mm)	1.750	4.250	2.500	3	2	0.650	0.650	1.200	H3-100HJ2-X	\$700.25
K3-18-30	12	0.710 (18mm)	14mm	1.181 (30mm)	1.750	4.875	2.469	3	2	0.650	0.650	1.169	H3-120HJ2-X	\$754.11
	15-20	1.023 (26mm)	20mm	1.969 (50mm)	2.500	6.500	3.469	3	2	0.950	0.950	1.569	H3-150HJ2-X	\$897.75
K3-22-50	15	0.866 (22mm)	20mm	1.969 (50mm)	2.500	6.500	3.469	3	2	0.950	0.950	1.569	M3-150HJ2-X	\$897.75
K3-25-49	18-24	0.984 (25mm)	20mm	1.907 (48.5mm)	2.500	6.500	3.469	3	2	0.950	0.950	1.569	K3-240HJ2-X	\$897.75

### 1/16" x 90° Serrations Hard Jaws- For SMW Autoblok, Rohm, Pratt Burnerd & Other Chucks

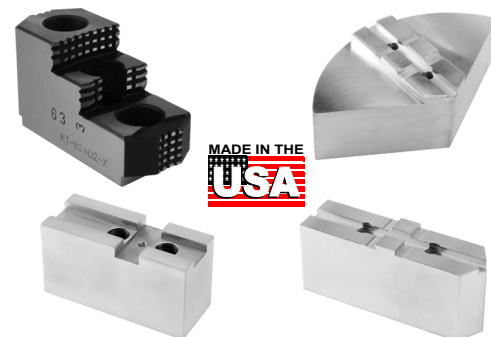
Critical Dimensions														
Group Number	Chuck Size	Groove Width G	Screw Size E	Hole Space D	Width Inch C	OAL Inch B	Height Inch A	No. of Holes	No. of Steps	Top Step Ht S1	Mid Step Ht S2	Bot Step Ht S3	Part Number	Price Per Set
I1-43-71	6	0.433 (11mm)	5/16	0.719 (18.5mm)	1.250	3.000	2.000	3	2	0.500	0.500	1.000	PH-60HJ2-X	\$448.87
I1-55-87	6	0.551 (14mm)	3/8	0.875 (22mm)	1.250	3.000	2.000	3	2	0.375	0.375	1.250	PH-61HJ2-X	\$448.87
I1-66-94	8	0.669 (17mm)	1/2	0.945 (24mm)	1.500	3.500	1.969	3	2	0.530	0.530	0.909	PH-80HJ2-X	\$484.79
I1-78-118	10 & 12	0.787 (20mm)	1/2	1.181 (30mm)	1.750	4.250	2.469	3	2	0.650	0.650	1.169	PH-100HJ2-X	\$628.43
I1-82-117	10 & 12	0.827 (21mm)	1/2	1.181 (30mm)	1.750	4.875	2.469	3	2	0.650	0.650	1.169	PH-120HJ2-X	\$628.43
I1-82-156	14-18	0.827 (21mm)	5/8	1.562 (39.5mm)	1.750	4.875	2.469	3	2	0.650	0.650	1.169	PH-150HJ2-X	\$923.40

## SPECIAL ORDER JAWS AVAILABLE!



- Super Quick Turnaround Time- 3 Days Or Less In Most Cases!
- **Special Order Round Jaws Up To 32" dia!**
- Special Order Soft Jaws Up To 8" Height!
- Soft Jaws Available In Any Length-Steel Or Aluminum
- Tongue And Groove, Square Serrated & Acme Serrated Jaws Up To 8" Height!
- Made Per Your Special Specifications In The USA! Please See Our Special Order Forms On Pages 555-560.

**Please Call Today For A Quote!**



**Call Us Today For All Of Your Machine Tool Needs!**