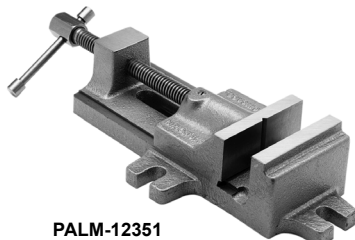


DRILL PRESS VISES

General Purpose



PALM-12302



PALM-12351

These General Purpose vises are recommended for use on drill presses, milling machines, grinders, and other machine tools. They have fine thread adjusting screws and ground steel jaws. The fixed jaw is grooved horizontally and vertically for holding round pieces. They feature bolt lugs for mounting on a machine table.

General Purpose Drill Press Vise

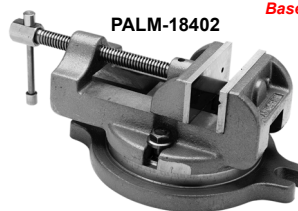
Jaw Width	Jaw Depth	Jaw Opening	Height	Ship Wgt.	Part Number	Price
1-3/4"	1"	1-1/2"	1-7/8"	3 lbs	PALM-12153	\$76.63
3"	1-1/2"	3"	2-5/8"	8 lbs	PALM-12302	\$116.40

Utility Vise

3-1/2"	1-1/2"	4"	2-1/2"	12 lbs	PALM-12351	\$198.85
--------	--------	----	--------	--------	------------	----------

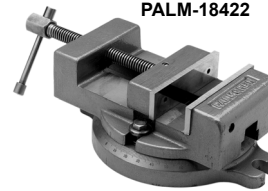


SWIVEL MACHINE VISES



PALM-18402

Base Rotates 360°!



PALM-18422

These durable, general-purpose machine vises are excellent for milling and grinding. The fixed jaw plate has a vertical and a horizontal groove to better hold rounded pieces. Includes a 360° (1° graduations) swivel base. Locking bolts fasten the vise to the base. The Low Profile vise is designed for applications where low overall height is necessary. Including the swivel base, the low profile vise is only 3-1/2" in height.

Machine Vise W/Base

Jaw Width	Jaw Depth	Jaw Opening	Height	Base Size	Ship Wgt.	Part Number	Price
4"	1-3/4"	4"	4-3/4"	9" x 7-1/2"	23 lbs	PALM-18402	\$252.85
6"	2"	6"	5-1/2"	12" x 10"	50 lbs	PALM-18602	\$490.71

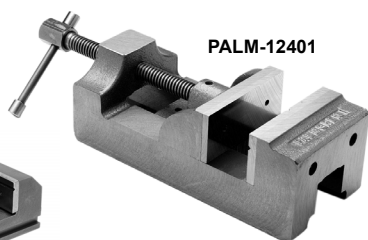
Low Profile Machine Vise W/Base

4-1/2"	1-1/4"	4"	3-1/2"	9-5/8 x 7-1/8"	25 lbs	PALM-18422	\$336.79
--------	--------	----	--------	----------------	--------	------------	----------



DRILL PRESS VISES

The traditional design for drilling, tapping, reaming and grinding. The rectangular shape allows it to be used laying on its base, sides or end for tremendous flexibility. Machined on five sides, the fixed jaw is grooved.



PALM-12401



PALM-12603

Traditional Drill Press Vises

Jaw Width	Jaw Depth	Jaw Opening	Height	Jaw Type	Ship Wgt.	Part Number	Price
2-3/8"	1-1/2"	2-1/2"	2-1/2"	Grooved	6 lbs	PALM-12253	\$92.15
3"	1-3/4"	3"	3"	Smooth	11 lbs	PALM-12301	\$183.33
4"	1-3/4"	4"	3-1/4"	Grooved	19 lbs	PALM-12401	\$218.25

Industrial Drill Press Vises

4"	1-1/2"	4"	2-11/16"	Grooved Trapezoid	10 lbs	PALM-12352	\$59.17
6"	2"	6"	3-1/2"		26 lbs	PALM-12603	\$129.01



PRECISION SCREWLESS VISES



- Oil hardened
- Precision ground
- Rapid positioning notches
- .00025" square and parallel

Jaw Width	Jaw Depth	Max. Opening	OAL	Part Number	Price Each
1"	3/8"	1"	2-5/8"	A-3900-0020	\$45.00
2"	1-1/4"	3"	6"	A-3900-0022	\$68.00
3"	1-5/8"	4"	7-5/8"	A-3900-0024	\$125.00

PRECISION SINE VISE



- Hardened and precision ground, providing a tolerance of 0.0004" for both parallelism and squareness
- Sine range: 6-60°
- Jaw can be opened or closed without unbolting from work surface



Jaw Width	Jaw Opening	Jaw Depth	Base Size	Part Number	Price Each
2"	2-5/8"	1"	5-3/8" x 2"	A-3900-2603	\$125.00
3"	4"	1-1/4"	7-5/8" x 3"	A-3900-2605	\$192.00

CRADLE ANGLE VISES

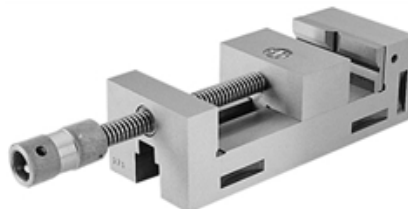


The Palmgren cradle-style angle vises are the quickest way to set your work between 0° and 90°. The vise has an alignment pin for rapid set-up and lock at preset angles of 0°, 15°, 30°, 45°, 60°, 75° and 90°. A hand-tightened mechanism allows locking at all other positions. The base has a 0° to 90° vertical scale in 1° graduations for precise angle settings. The fixed jaw is grooved.

Jaw Width	Jaw Depth	Jaw Opening	Height at 0°	Base Size (sq)	Ship Wgt.	Part Number	Price
3"	1-1/8"	3"	4"	6-9/16"	13 lbs	PALM-11250	\$70.81
4"	1-1/2"	4"	4-1/2"	7-9/16"	20 lbs	PALM-11351	\$100.88



PRECISION TOOLMAKER'S VISE



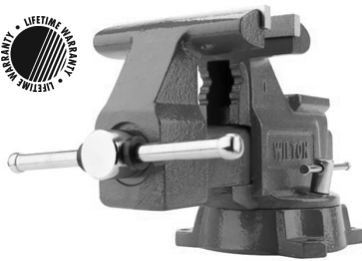
- All surfaces are hardened and precision ground square and parallel to accuracy of +/- .0002"
- Clamping slots are provided and jaws are easily replaced
- Ground "V" way

Jaw Width	Jaw Opening	Jaw Depth	Part Number	Price
2"	2.5"	1.00"	A-3900-0067	\$105.00
3"	4"	1.38"	A-3900-0251	\$163.00

Call Us Or Visit Our Website For Our Complete Selection!

VICES-WORKSHOP & MILLING

UTILITY WORKSHOP VISE



- Heavy duty 30,000 PSI casting for strength and durability
- Large anvil work surface
- 180° swivel base with lockdown allows for quick and easy positioning
- Powder coat paint resists scratches and provides a tough durable surface
- Built-in pipe jaws handle various pipe sizes
- Ideal for general clamping applications

Jaw Width	Jaw Opening	Throat Depth	Pipe Jaw Capacity	Ship Wgt. Lbs.	Part Number	Price
4 1/2"	4"	2-5/8"	1/8"-2"	19	WI-11126	\$119.99
5 1/2"	5"	3-7/16"	1/8"-2 1/2"	29	WI-11127	\$144.99
6 1/2"	5 1/2"	3-11/16"	1/8"-2 1/2"	41	WI-11128	\$194.99
6	6	4-3/16"	1/8-3	63	WI-00191	\$264.99
8	7-1/2"	4-1/2"	1/8-3	80	WI-11800	\$369.99

SHOP VISES



- Designed for general duty applications
- 30,000 PSI ductile iron body
- 360° swivel base for quick and easy positioning
- Built in pipe jaws handle various pipe sizes
- Rubber pinch point safety guards
- Replaceable serrated top jaws
- Large anvil work surface

Jaw Width	Max. Opening	Throat Depth	Part Number	Price Each
4"	4"	2-3/4"	WI-63300	\$144.99
5"	5"	3"	WI-63301	\$164.99
6"	6"	3-1/2"	WI-63302	\$244.99
8"	8"	4"	WI-63304	\$339.99

TRADESMAN VISE



FEATURES:

- Designed for general purpose, service or maintenance work.
- Wide jaws provide greater clamping surface
- Precision thrust bearing creates greater clamping pressure and increases longevity
- Top Jaws are reversible-standard serrated jaws for extra grip on sturdy materials or smooth jaws for more delicate pieces
- Large anvil and fully enclosed spindle



Call For Our Promotional Pricing!

Jaw Width	Jaw Opening	Throat Depth	Pipe Jaw Capacity	Ship Wgt. Lbs.	Part Number	Price
4 1/2"	4"	3 1/4"	1/4"-2 1/2"	42	WI-63199	\$544.00
5 1/2"	5"	3 3/4"	1/4"-3"	53	WI-63200	\$663.00
6 1/2"	6 1/2"	4"	1/4"-3 1/2"	73	WI-63201	\$740.00

COMBO BENCH & PIPE VISES



- 65,000 PSI ductile castings
- Sealed construction
- Straight line pull power tunnel design
- Precision fit slide bar to 0.003"
- Replaceable serrated steel jaws
- Large anvil
- 360° swivel base with dual lockdowns
- LIFETIME WARRANTY



Jaw Width	Jaw Opening	Jaw Depth	Pipe Jaw Capacity	Part Number	Price
5"	6"	3.50"	1/4 - 2-1/2"	PALM-29745	\$245.64
6"	7"	3.75"	1/4 - 3-1/2"	PALM-29746	\$303.21
8"	8-1/4"	4.75"	1/4 - 3-1/2"	PALM-29748	\$445.36

PRECISION MACHINE VISES

FEATURES:

- Vises are matched
- 4 jaw plate positions allow extra capacity with the jaw plates in the outside position
- Chip cover protects lead screw from damage
- Compatible with industry standard vise jaws
- Integral key and large fasteners reduce deflection by 50%

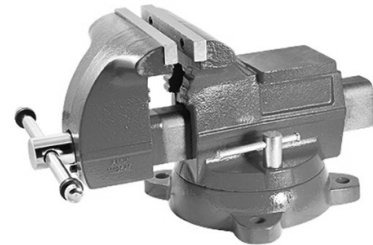


Vise Size	Jaw Opening	Bed Height	OAL	Part Number	Price Each
6"	7.5"	2.875	17.2"	SOWA-327-275	\$561.45
	8.9"	2.875	17.2"	SOWA-327-290	\$592.00
Swivel Base				SOWA-327-280	\$118.88

WORKSHOP BENCH VISES



- 20,000 PSI castings
- Hardened steel face jaws
- Heavily reinforced 4 lug base
- 270° swivel base
- Powder coated finish
- Polished anvil horn for shaping



Jaw Width	Jaw Opening	Part Number	Price
4-1/2"	4"	A-3900-2514	\$82.00
5-1/2"	5"	A-3900-2515	\$105.00
6-1/2"	5.5"	A-3900-2516	\$130.00

PRECISION MILLING VISES



- Equipped with Dual Force anti-lift mechanism
- Friction reducing needle bearings help increase clamping pressure
- Hardened vise bed and jaw plates
- Semi-hard steel screw
- 60,000 PSI ductile iron castings
- Accepts industry standard vise jaws



Description	Vise Size	Jaw Opening	Jaw Depth	Part Number	Price
w/ swivel base	6"	8.75"	1-3/4"	PALM-26604	\$532.10
stationary base	6"	8.75"	1-3/4"	PALM-26608	\$402.90

Call Us Today For All Of Your Machine Tool Needs!

6" MILLING MACHINE VISE



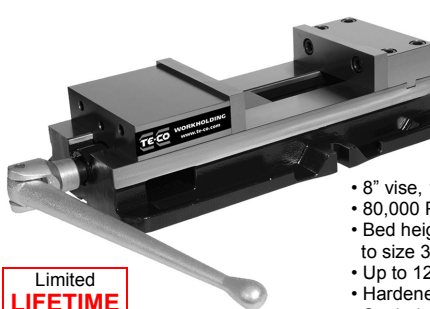
9" OPENING!

- Up to 8,200 lbs of clamping force
- Bed height matched to size 2.875" +/-0.0005"
- Repeatability within .001"
- Hardened vise bed and jaw plates
- Sealed bearing system increases bearing life

Limited **LIFETIME** Warranty

Vise Size	Vise Opening	Bed Height	OAL	Part Number	Price Each
6"	9"	2.875"	17.21"	PWS-6900	\$485.00

8" MILLING MACHINE VISE



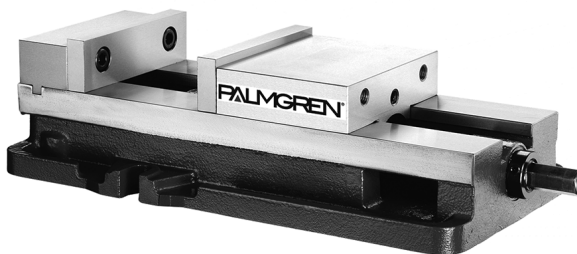
11" OPENING!

- 8" vise, 11" opening
- 80,000 PSI ductile iron body
- Bed height matched to size 3.310" +/-0.0005"
- Up to 12,000lbs of clamping force
- Hardened vise bed and jaw plates
- Sealed and lubricated needle roller thrust bearing for maximum life

Limited **LIFETIME** Warranty

Vise Size	Vise Opening	Bed Height	OAL	Part Number	Price Each
8"	11"	3.310"	21.81"	PWS-8110	\$1,465.00

PRECISION MILLING VISES

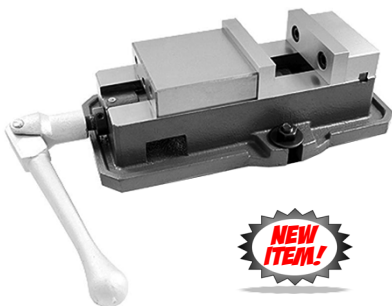


- Equipped with Dual Force anti-lift mechanism
- Friction reducing needle bearings help increase clamping pressure
- Hardened vise bed and jaw plates
- Repeatability within 0.001"
- Bed heights matched to +/-0.0004"
- 80,000 PSI stress relieved ductile iron castings
- Accepts industry standard vise jaws
- Bed height: 6" vise-2.875", 8" vise-3.310"
- LIFETIME GUARANTEE

DUAL FORCE DESIGN
1/2 pound of downward force for every pound of horizontal force.

Model	Vise Size	Jaw Opening	Jaw Depth	Part Number	Price
MPS67	6"	7.50"	1.752"	PALM-25928	\$599.14
MPS68	6"	8.90"	1.752"	PALM-25929	\$625.71
MPS80	8"	10.00"	12.205"	PALM-25930	\$1,302.86

Ultra-Series PRECISION MILLING VISES

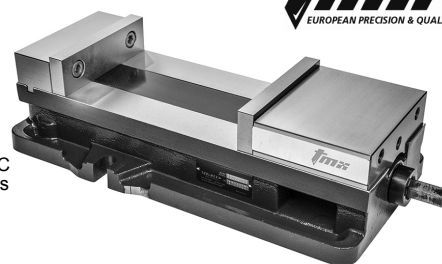


- High quality, super precision, ground to accuracy
- Totally enclosed heat treated lead screw
- Smooth operation and high repeatability
- Lock-down type clamping
- Jaws interchangeable with industry standard vise jaws



Jaw Width	Jaw Opening	OAL	Part Number	Price Each
4"	4"	13.50"	A-3900-2204	\$290.00
6"	7.5"	21.00"	A-3900-2206	\$397.00
Optional Swivel Base For 6" Vise			A-3900-2207	\$62.00

PRECISION MACHINE VISES

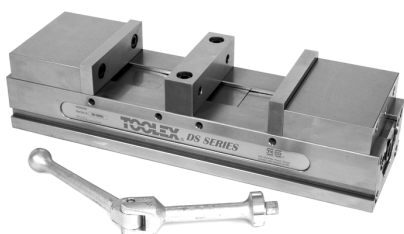


- Body made from high quality ductile Iron hardened to 45RC
- Sealed bearing system allows for increased vise life
- Close tolerance bed heights for excellent accuracy
- Anti-lift mechanism keeps workpiece from lifting
- Chip cover protects lead screw

10 YEAR WARRANTY

Jaw Width	Jaw Opening	Bed Height	Width	OAL	Part Number	Price Each
6"	7.5"	2.88"	9.25"	17.01"	BI-3220-006	\$399.00
6"	9"	2.88"	8.75"	17.20"	BI-3220-0068	\$459.00
8"	10"	3.31"	11.61"	21.85"	BI-3220-0081	\$899.00

DOUBLE STATION MACHINE VISES



- Body manufactured from 80,000 PSI ductile cast iron
- Ways are flame hardened to 40 R/C maximum
- Vise Capacity - 4" jaw opening per side
- Jaw mounting and indexing to accuracies of ±.0005
- Standard Hard Jaw Set made of 1018 steel
- Carrier jaws will accept both AccuSnap and QuickChange master jaws



Vise Size	Bed Height	OAL	Vise Opening	Part Number	Price Each
6"	3.150"	20.50"	4"	TECO-DS6000	\$1,255.00

Call Us Or Visit Our Website For Our Complete Selection!

CHUCK JAWS
LATHE WORKHOLDING

MACHINE VISES
VISE JAWS

RETENTION KNOBS
ER, DA, TG COLLETS

TOOLHOLDERS
TAP HOLDERS

INDEXABLE DRILLS
TURNING & BORING

ENDMILLS, DRILLS
TAPS & REAMERS

ABRASIVES
MEASURING TOOLS

MRO & SAFETY
FLAT STOCK/DRILL ROD

MACHINE VISES

KURT SIDEWINDER VISE

The Kurt SideWinder is a vise that mounts vertically to the back of any Kurt 6" vise with an integral bracket. The bracket includes a stabilization leg that will mount to the table on the movable end of the vise and a workstop to position the height of the part. For doing 2nd operation workholding, allowing the user to hold the part vertically rather than horizontally

- Saves set up time for 2nd op vertical work
- Machining can be done on both vises in the same setup
- Vise is at an elevated position which is more conducive to longer reach machining
- Round nut controls deflection to a greater degree
- Can be mounted to any Kurt industry standard 6" vise
- Stabilizer foot for vibration control
- Does not interfere with the host vise
- Pull type vise
- AngLock design



Jaw Width	Max Jaw Opening	Jaw Height	Clamping Force lbs	Hex Size	Overall Bracket Width	Weight	Part Number	Price Each
2.50"	2.50"	1.060"	up to 2,450 lbs	3/8	14.00"	20 lbs	KURT-SDW25	\$499.00
3.47"	3.75"	1.235"	up to 4,000 lbs	9/16	20.86"	45 lbs	KURT-SDW35	\$799.00

KURT TOOLROOM VISE

An extremely versatile vise that can fit on the smallest machine tables with ease. The vise is fully chip guarded. Mounting can be accomplished through the body or with outrigger toe clamps mounted to the outside of the body (sold separately). All sides of the vise are ground and can easily be mounted on its side with the toe clamps (sold separately). Four cavities in the ends of the body make mounting this vise with the toe clamps very quick and easy. By using a receiver vise this vise can be used as a sine vise with 30, 45 and 60° angles built into the side of the body on the stationary side. To utilize this feature remove the triangular shaped magnets and place the dowel pins in the proper holes to get the angle you desire.



Optional KTR35-CK Clamp Kit



Optional KTR35-TK Toe Kit



Shown Mounted w/
Optional KTR35-TK Clamp Kit



Optional KTR35-KK Key Kit



On All Kurt AngLock Workholding Products

Optional Accessories

Description	Part Number	Price
Clamping Kit 3/8"	KURT-KTR35-CK	\$99.00
Toe Kit	KURT-KTR35-TK	\$95.00
Key Kit	KURT-KTR35-KK	\$95.00

Toolroom Vise

Jaw Width	Max Jaw Opening	Jaw Height	Jaw Height to Step	Clamping Force lbs	Vise Height	Base Height	OAL	Hex Size	Weight	Part Number	Price Each
3.470"	4.060"	1.235"	1.118"	up to 4,500	2.50"	2.00"	10.125"	0.561	20 lbs	KURT-KTR35	\$799.00

KURT VERSATILE LOCK® SERIES

The Versatile Lock vise is the industry's ultimate single station CNC vise. It offers ultra-precision function through these important design features: The original, time proven Kurt AngLock design prevents parts from lifting upward under heavy clamping loads. The "pull-type" jaw clamping reduces jaw stationary deflection by at least 80%. One piece vise body and stationary jaw provide greater strength while reducing weight.

FEATURES:

- Can be mounted upright or on either side.
- Matched stationary jaw to keyway including the body height ±0.001".
- 0.0005" clamping repeatability.
- Footprint on the short version is 13". Ideal for the smallest machines.
- All air units feature a 1/4" vise stroke.
- Air vise has a precise and repeatable "gentle touch" for delicate parts.



On All Kurt AngLock Workholding Products



3600V Vise-Standard & Short

Vise Size	Vise Opening	Bed Height	OAL	Weight	Part Number	Price Each
6"	6"	3.187"	15.060"	69 lbs	KURT-3600V	\$835.00
6"	4"	3.187"	12.940"	64 lbs	KURT-3620V	\$942.00

Standard Air Vise

6"	6"	3.187"	15.060"	75 lbs	KURT-3600A	\$2,239.00
----	----	--------	---------	--------	------------	------------



3600A-Standard Air

Call Us Today For All Of Your Machine Tool Needs!



KURT ANGLOCK® D-SERIES VISES

The original Kurt Anglock® D-Series vises are designed for precision part clamping on basic machine tools such as knee-type mills, grinders and machining centers. D-Series vises are ideal for use in running production parts where datums, flatness and parallelism are important.



MODEL DX6



- 6" vise, full 9" opening
- AngLock® design- spherical segment creates all-directional alignment and reduces jaw lift
- Narrower body style allows for more vises on the machine
- Recessed pocket for easier lifting
- Thru-body chip evacuation
- Pull-type design reduces stress on vise body
- Same bed height as D688
- 4 bolt stationary design fastens from the top
- Bearing pack is larger, stronger and more durable than bearing in D688



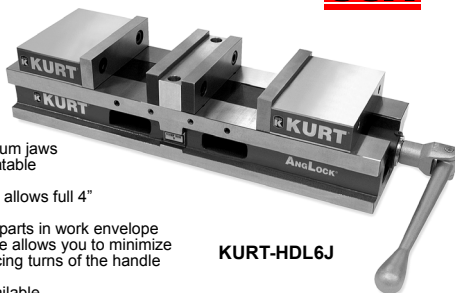
DX6 Vise
6" Jaw Width
Part # **KURT-DX6**
\$569.00

LATHE CHUCKS
LIVE CENTERS

VISE JAWS
VISE ACCESSORIES

HDL DUAL STATION VISE

HDL Anglock Vises are high density long vises with two clamping stations, providing repeatable clamping to 0.001" with heavy duty features. Features a rugged 80,000PSI ductile iron body with steel components to provide strength, rigidity and long term accuracy while absorbing machining vibration.



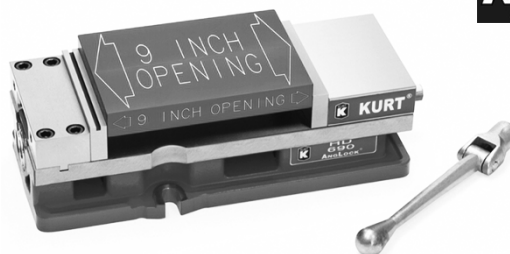
FEATURES:

- Also available with aluminum jaws
- 2 Clamping stations-repeatable clamping to 0.001"
- Standard hard jaw system allows full 4" opening in each station
- Maximizes the number of parts in work envelope
- Adjustable pre-load feature allows you to minimize pre-load range, thus reducing turns of the handle to open or close vise
- Hydraulic models also available
- Lifetime Iron Clad™ Warranty

KURT-HDL6J

Jaw Width	Max. Opening	Bed Height	OAL	Weight	Part Number	Price
6"	4.00"	3.125"	21.00"	110 lbs	KURT-HDL6J	\$1,993.00

KURT HD690 VISE



- "Pull" Type reduces stress in vise body for more accurate clamping
- Full 9" opening
- Wider stationary jaw is more stable and provides less deflection
- Stationary jaw bolts from the top reduces stress in the body and will lay flatter when assembled
- Narrow body width allows for more vises in the same work envelope
- Taller body design equals less deflection under load
- Bolts and locates on 40mm, 50mm and 2" grid patterns
- Quick change movable jaw allows for use of a machinable jaw for odd shaped parts
- Also available in hydraulic and reverse models



Jaw Width	Max. Opening	Bed Height	OAL	Weight	Part Number	Price
6"	9.00"	3.125"	16.810"	75 lbs	KURT-HD690	\$776.00

STRAIGHT SHANK
COLLET HOLDERS

TAP HOLDERS
DRILL CHUCKS

CARBIDE INSERTS
THREADING/GROOVING

D810 PRECISION VISE



Features a large 10" jaw opening and provides up to 11,600 lbs. of clamping force. The AngLock® design of the stationary jaw reduces vise deflection by 25% while allowing disassembly of the vise without removing body from the machine table.

- AngLock design assures the movable jaw does not lift
- Standard bed height of +/-0.001"
- Hardened vise bed and jaw plates
- Semi-hard steel screw
- 80,000 PSI ductile iron body



Jaw Width	Max. Opening	Bed Height	Jaw Height	Width	OAL	Weight	Part Number	Price
8"	10.00"	3.31"	2.20"	11.00"	21.81"	158 lbs	KURT-D810	\$1,675.00

CUTTING TOOLS
MACHINERY

SWIVEL BASE

For Kurt Anglock type vise. Allows positioning in increments of 1°.



D688 vise shown mounted on D60-4-SA swivel base

Vise Size	Vise Model	Part Number	Price Each
4"	D40, DX40	KURT-D40-4-SA	\$464.00
6"	D675, D688, DX6	KURT-D60-4-SA	\$419.00
8"	D810	KURT-D80-4-SA	\$1,134.00

ANGLOCK® VISE REPAIR KITS

Anglock® repair kit includes thrust bearings, washers and all wear parts for each specific Kurt Anglock® vise.



Vise Model	Description	Part Number	Price
D675	Repair Kit	KURT-D675-KIT	\$37.00
D 688	Rebuild Kit	KURT-D688-KIT	\$37.00
D 810	Rebuild Kit	KURT-D810-KIT	\$40.00
DL 430	Serial #'s <3300	KURT-DL430-KIT1	\$42.00
DL 640	Serial #'s 1000-3734	KURT-DL640-K1	\$57.00
DL 640	Serial #'s 3735-4999	KURT-DL640-K2	\$57.00

PRECISION TOOLS
DEBURRING

COOLANT/FLUIDS
TOOL STORAGE

Call Us Or Visit Our Website For Our Complete Selection!