

# LIGHTWEIGHT CLAW JAWS

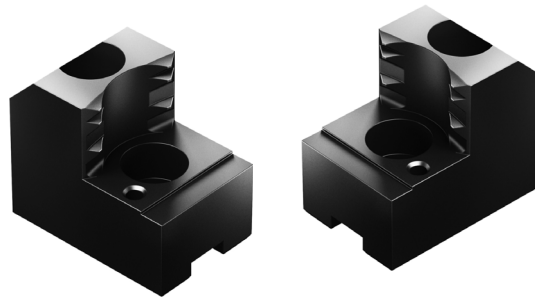
## HARD CLAW JAWS

### Very Aggressive Bite Hard Jaws

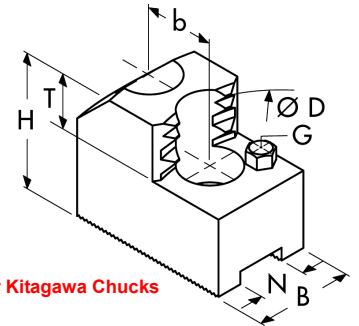
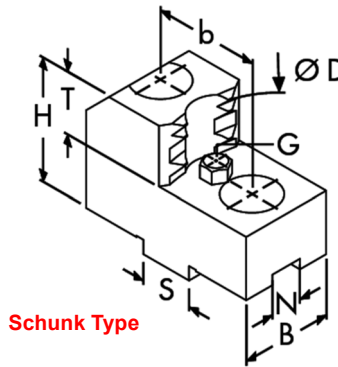
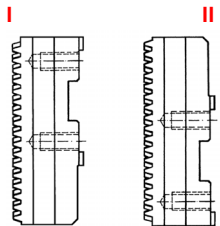


**Benefits:**

- Optimized clamping contour for maximum clamping force of the whole clamping range
- Transmission of high RPMs for economic cutting at high cutting speeds
- High speeds at a low centrifugal force resulting in higher clamping forces due to a low weight
- Highly versatile clamping ranges leads to significantly lower investment costs
- Form-fit clamping of the workpiece at a high machining performance and optimum clamping force
- Additional third row of teeth allows for higher cutting data during "on-the-fly processing"
- Highest flexibility through standardization
- Extensive product range for I.D., O.D. and bar clamping
- Case-hardened for less wear at the teeth



**Position of Base Jaw**



For Kitagawa Chucks

SchUNK Type



**For Quick Jaw Change Schunk Chucks**

Schunk Chuck Type	Clamping Range mm	Position of Base Jaw		Swing Dia mm	Groove Width N	Hole to Hole b	Tongue Width S	Width B	Height H	Gripping Face Ht T	Work Stop Thread G	Part Number	Set Price	Mfg. Model No
		I	II											

**8" (200mm, 210mm, 215mm) Size Chucks (Group TK-10-08-40)**

THW 210-R	28-82	•		248	10mm	40mm	20mm	26mm	45mm	25mm	M 6	WK-080-CO-10-S	\$463.60	SZKA 212
THW 210-R	66-119		•	250				30mm	45mm	25mm	M 6	WK-080-CO-20-S	\$463.60	SZKA 213
THW 210-R	103-157	•		248				30mm	45mm	25mm	M 6	WK-080-CO-20-S	\$463.60	SZKA 213
THW 210-R	138-192	•		254				30mm	45mm	25mm	M 6	WK-080-CO-30-S	\$463.60	SZKA 216

**10" (250mm, 260mm) Size Chucks (Group TK-12-12-40)**

THW 250-R	31-86		•	297	12mm	40mm	20mm	30mm	50mm	25mm	M 6	WK-100-CO-10-S	\$503.13	SZKA 263
THW 250-R	82-143		•	297				40mm	50mm	25mm	M 6	WK-100-CO-20-S	\$503.13	SZKA 266
THW 250-R	144-207	•		301				40mm	50mm	25mm	M 6	WK-100-CO-20-S	\$503.13	SZKA 266
THW 250-R	177-240	•		315				40mm	50mm	25mm	M 6	WK-100-CO-30-S	\$503.13	SZKA 268

**12" (315mm) Size Chucks (Group TK-12-12-40)**

THW 315-R	31-112		•	346	12mm	40mm	20mm	30mm	50mm	25mm	M 6	WK-100-CO-10-S	\$503.13	SZKA 263
THW 315-R	86-170		•	346				40mm	50mm	25mm	M 6	WK-100-CO-20-S	\$503.13	SZKA 266
THW 315-R	119-204		•	346				40mm	50mm	25mm	M 6	WK-100-CO-30-S	\$503.13	SZKA 268
THW 315-R	206-291	•		366				40mm	50mm	25mm	M 6	WK-100-CO-30-S	\$503.13	SZKA 268

**FOR KITAGAWA® CHUCKS**

Kitagawa Chuck Type	Clamping Range mm	Swing Dia mm	Groove Width N	Hole to Hole b	Screw Size	Width B	Height H	Gripping Face Ht T	Workstop Thread G	Part Number	Set Price	Mfg. Model No
---------------------	-------------------	--------------	----------------	----------------	------------	---------	----------	--------------------	-------------------	-------------	-----------	---------------

**6" (165mm) Size Chucks (Group K1-12-20)**

B 206, HOH 6/206	31-52	172	12mm	20mm	M10	30mm	47mm	20mm	M6	KT-060-COD-10-S	\$353.58	SZAJ 16-6
N 160; N 6	32-47	166										
B 206, HOH 6/206	42-67	172	12mm	20mm	M10	30mm	47mm	20mm	M6	KT-060-COD-20-S	\$353.58	SZAJ 16-7
B 160; B 6	32-65	170										
N 160; N 6	47-63	166	12mm	20mm	M10	30mm	47mm	20mm	M6	KT-060-COD-30-S	\$353.58	SZAJ 16-8
B 206	58-81	172										
B 160; B 6	47-81	170	12mm	20mm	M10	30mm	47mm	20mm	M6	KT-060-COD-40-S	\$353.58	SZAJ 16-9
HOH 6/206	58-83	172										
N 160; N 6	63-77	166	12mm	20mm	M10	35mm	47mm	20mm	M6	KT-060-COD-50-S	\$353.58	SZAJ 16-10
B 206, HOH 6/206	72-97	172										
B 160; B 6	61-95	170	12mm	20mm	M10	40mm	47mm	20mm	M6	KT-060-COD-50-S	\$353.58	SZAJ 16-10
N 160; N 6	77-93	166										
B 206, HOH 6/206	88-113	172	12mm	20mm	M10	40mm	47mm	20mm	M6	KT-060-COD-50-S	\$353.58	SZAJ 16-10
B 160; B 6	77-111	170										
N 160; N 6	93-107	166										

See Following Page For Claw Jaws for 8", 10" & 12" Kitagawa Chucks

**Call Us Today For All Of Your Machine Tool Needs!**

## HARD CLAW JAWS-For Kitagawa® Chucks (continued)



LATHE CHUCKS  
LIVE CENTERS

VICE JAWS  
VICE ACCESSORIES

STRAIGHT SHANK  
COLLET HOLDERS

TAP HOLDERS  
DRILL CHUCKS

CARBIDE INSERTS  
THREADING/GROOVING

CUTTING TOOLS  
MACHINERY

PRECISION TOOLS  
DEBURRING

COOLANT/FLUIDS  
TOOL STORAGE

Kitagawa Chuck Model	Clamping Range mm	Swing Dia mm	Groove Width N	Hole to Hole b	Screw	Width B	Height H	Gripping Face H T	Workstop Thread G	Part Number	Set Price	Mfg. Model No
----------------------	-------------------	--------------	----------------	----------------	-------	---------	----------	-------------------	-------------------	-------------	-----------	---------------

### 8" (210mm) Size Chucks-Group K1-14-25

B 208, HOH 8/208	35-64	211	14mm	25mm	M12	35mm	53mm	25mm	M6	KT-080-CO-10-S	\$400.58	SZAJ 20-1
B 200, B 8	33-61	208										
N 200, N 8	42-68	212										
B 208, HOH 8, HOH 208	62-92	211	14mm	25mm	M12	35mm	53mm	25mm	M6	KT-080-CO-20-S	\$400.58	SZAJ 20-2
B 200, B 8	47-89	208										
N 200, N 8	68-96	216										
B 208, HOH 8/208	92-122	211	14mm	25mm	M12	40mm	53mm	25mm	M6	KT-080-CO-30-S	\$400.58	SZAJ 20-3
B 200, B 8	77-119	208										
N 200, N 8	98-128	217										
B 208, HOH 8/208	122-153	211	14mm	25mm	M12	40mm	53mm	25mm	M6	KT-080-CO-40-S	\$400.58	SZAJ 20-4
B 200, B 8	113-150	208										
N 200, N 8	128-153	212										
B 208, HOH 8/208	144-173	229	14mm	25mm	M12	40mm	53mm	25mm	M6	KT-080-CO-50-S	\$400.58	SZAJ 20-16
B 200, B 8	135-170	226										
N 200, N 8	153-173	230										

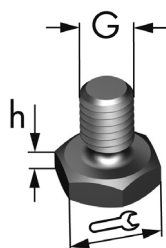
### 10" (254mm) Size Chucks-Group K1-16-30

B 210	43-84	260	16mm	30mm	M12	40mm	58mm	25mm	M6	KT-100-CO-10-S	\$487.00	SZAJ 25-1
B 250, B 10	40-81	258										
HOH 10 K, HOH 250	38-79	255										
N 250, N 10	37-78	255										
B 210	84-128	260	16mm	30mm	M12	40mm	58mm	25mm	M6	KT-100-CO-20-S	\$487.00	SZAJ 25-2
B 250, B 10	76-123	258										
HOH 10K, HOH 250	79-123	255										
N 250, N 10	78-122	257										
B 210	128-173	264	16mm	30mm	M12	40mm	58mm	25mm	M6	KT-100-CO-30-S	\$487.00	SZAJ 25-3
B 250, B 10	120-167	262										
HOH 10 K, HOH 250	123-168	259										
N 250, N 10	122-167	263										
B 210	173-214	280	16mm	30mm	M12	40mm	58mm	25mm	M6	KT-100-CO-40-S	\$487.00	SZAJ 25-4
B 250, B 10	165-212	278										
HOH 10K, HOH 250	168-209	275										
N 250, N 10	167-208	274										

### 12" (300mm, 304mm) Size Chucks-Group K1-18-30

B 300, B 12	45-108	320	18mm	30mm	M14	50mm	65mm	25mm	M8	KT-120-CO-10-S	\$585.00	SZAJ 30-1
HOH 12 K, HOH 300	45-110	322										
N 300, N 12	42-116	328										
B 300, B 12	93-168	334										
B 300, B 12	99-170	336	18mm	30mm	M14	50mm	65mm	25mm	M8	KT-120-CO-20-S	\$585.00	SZAJ 30-2
HOH 12 K, HOH 300	99-170	336										
N 300, N 12	102-176	342										
B 300, B 12	158-234	325										
B 300, B 12	163-236	327	18mm	30mm	M14	50mm	65mm	25mm	M8	KT-120-CO-30-S	\$585.00	SZAJ 30-3
HOH 12 K, HOH 300	163-236	327										
N 300, N 12	166-242	333										
B 300, B 12	227-299	370										
B 300, B 12	228-301	372	18mm	30mm	M14	50mm	65mm	25mm	M8	KT-120-CO-40-S	\$585.00	SZAJ 30-4
HOH 12 K, HOH 300	228-301	372										
N 300, N 12	231-307	378										
B 212	45-111	323										
B 212	108-173	337	21mm	30mm	M16	50mm	65mm	25mm	M8	KT-128-CO-10-S KT-128-CO-20-S KT-128-CO-30-S KT-128-CO-40-S	\$585.00	SZAJ 30-5 SZAJ 30-6 SZAJ 30-7 SZAJ 30-8
B 212	173-238	328										
B 212	238-302	373										

## SCREWS FOR WORKSTOP



Screw Head Height h	Wrench Size	Workstop Screw Thread G	Part Number	Price	MFG Id.-No.	Screw Head Height h	Wrench Size	Workstop Screw Thread G	Part Number	Price	MFG Id.-No.
5	8	M 5	SCH-AB55	\$7.00	122 171	25	10	M 6	SCH-AB256	\$9.00	122 169
10	8	M 5	SCH-AB105	\$7.00	122 172	5	14	M 8	SCH-AB58	\$7.00	122 161
15	8	M 5	SCH-AB155	\$7.00	122 173	10	14	M 8	SCH-AB108	\$7.00	122 163
5	10	M 6	SCH-AB56	\$7.00	122 160	15	14	M 8	SCH-AB158	\$7.00	122 165
10	10	M 6	SCH-AB106	\$7.00	122 162	20	14	M 8	SCH-AB208	\$9.00	122 167
15	10	M 6	SCH-AB156	\$7.00	122 164	25	14	M 8	SCH-AB258	\$9.00	122 168
20	10	M 6	SCH-AB206	\$9.00	122 166	30	14	M 8	SCH-AB308	\$9.00	122 170

Call Us Or Visit Our Website For Our Complete Selection!