

# LATHE TOOLHOLDER BUSHINGS



## LATHE TOOLHOLDER BUSHINGS

Bush-Rite lathe bushings have quickly become a popular choice in machine shops throughout North America due to their high standards for accuracy, quality and performance. Bush-Rite products are 100% guaranteed to be free from defect in workmanship and material. Bush-Rite offers a large variety of bushings including Types C, CS (short), J, Z, B, DD, LB, LBF and boring bar sleeves.



**FEATURES:**

- Increased step diameter for easy and perfect sealing.
- Concentric ground and diamond polished OD & ID resulting in a mirror smooth chrome-like finish
- "Easy Entry" feature on OD for quick insertion
- Wrench flats for easy removal
- Step relief for easy removal and gripping on Z style
- Type and size clearly marked on surface of head diameter for easy identification
- 100% Satisfaction Guaranteed!

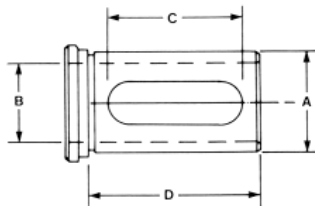
### TYPE C BUSHINGS

Designed for universal use on all CNC turning machines. To adapt a wide variety of boring bars, drills, reamers and shank type tools.



**SPECIFICATIONS:**

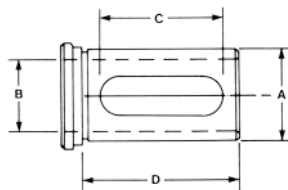
**Material:** ALLOY STEEL 8620  
**Hardness Data:** Rc 55-57 for longer tool life  
**Case Hardened and Ground Concentric OD & ID**  
**Axial Concentricity:** OD & ID- 0.002"  
**Tolerance:** H6 & g6 in grinding the OD & ID



A O.D.	C Slot Length	D Length Under Head	B I.D.	Part Number	Price Each
3/4"	1-7/8"	2-1/4"	1/4"	TBC-07-0250-B	\$50.43
			5/16"	TBC-07-0312-B	
			3/8"	TBC-07-0375-B	
			1/2"	TBC-07-0500-B	
1"	2-3/8"	2-3/4"	1/4"	TBC-10-0250-B	\$53.68
			5/16"	TBC-10-0312-B	
			3/8"	TBC-10-0375-B	
			1/2"	TBC-10-0500-B	
			5/8"	TBC-10-0625-B	
1-1/4"	2-7/8"	3-1/4"	3/4"	TBC-10-0750-B	\$54.88
			3/8"	TBC-12-0375-B	
			1/2"	TBC-12-0500-B	
			5/8"	TBC-12-0625-B	
			3/4"	TBC-12-0750-B	
1-1/4"	2-7/8"	3-1/4"	7/8"	TBC-12-0875-B	\$54.88
			1"	TBC-12-1000-B	

A O.D.	C Slot Length	D Length Under Head	B I.D.	Part Number	Price Each
1-1/2"	3"	3-3/8"	3/8"	TBC-15-0375-B	\$59.80
			1/2"	TBC-15-0500-B	
			5/8"	TBC-15-0625-B	
			3/4"	TBC-15-0750-B	
			7/8"	TBC-15-0875-B	
1-3/4"	3-1/8"	3-1/2"	1"	TBC-15-1000-B	\$68.59
			1 1/4"	TBC-15-1250-B	
			1 1/2"	TBC-15-1500-B	
			1 3/4"	TBC-15-1750-B	
			1 7/8"	TBC-15-2000-B	
2"	3-5/8"	4"	5/8"	TBC-20-0625-B	\$69.58
			3/4"	TBC-20-0750-B	
			1"	TBC-20-1000-B	
			1-1/4"	TBC-20-1250-B	
			1-1/2"	TBC-20-1500-B	
2"	3-5/8"	4"	1-3/4"	TBC-20-1750-B	\$69.58

### TYPE CS SHORT SERIES BUSHINGS



Similar to the "C" Style bushing, but with a shorter overall length. Designed for universal use on all CNC turning machines. To adapt a wide variety of boring bars, drills, reamers and shank type tools.

A O.D.	C Slot Length	D Length Under Head	B I.D.	Part Number	Price Each
3/4"	1-1/8"	1-1/2"	1/4"	TBCS-07-0250-B	\$44.38
			5/16"	TBCS-07-0312-B	
			3/8"	TBCS-07-0375-B	
			1/2"	TBCS-07-0500-B	
1"	1-3/8"	1-3/4"	1/4"	TBCS-10-0250-B	\$50.96
			5/16"	TBCS-10-0312-B	
			3/8"	TBCS-10-0375-B	
			1/2"	TBCS-10-0500-B	
			5/8"	TBCS-10-0625-B	
1"	1-3/8"	1-3/4"	3/4"	TBCS-10-0750-B	\$50.96

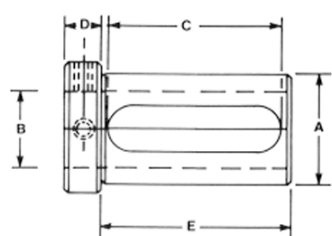
A O.D.	C Slot Length	D Length Under Head	B I.D.	Part Number	Price Each
1-1/4"	1-3/4"	2-1/8"	3/8"	TBCS-12-0375-B	\$53.90
			1/2"	TBCS-12-0500-B	
			5/8"	TBCS-12-0625-B	
			3/4"	TBCS-12-0750-B	
1-1/2"	2-1/8"	2-1/2"	7/8"	TBCS-12-0875-B	\$57.82
			1"	TBCS-12-1000-B	
			3/8"	TBCS-15-0375-B	
			1/2"	TBCS-15-0500-B	
			5/8"	TBCS-15-0625-B	
1-1/2"	2-1/8"	2-1/2"	3/4"	TBCS-15-0750-B	\$57.82
			7/8"	TBCS-15-0875-B	
			1"	TBCS-15-1000-B	
1-1/2"	2-1/8"	2-1/2"	1 1/4"	TBCS-15-1250-B	\$57.82

Call Us Today For All Of Your Machine Tool Needs!



## TYPE Z BUSHINGS

The most flexible toolholder bushing for all types of N/C-CNC turning centers, turret lathes and chucks. Elongated slot give the user a complete interchangeability with all brands of equipment.



### FEATURES:

- Increased step diameter for easy and perfect sealing.
- Concentric ground and diamond polished OD & ID resulting in a mirror smooth finish
- "Easy Entry" feature on OD for quick insertion
- Wrench flats for easy removal
- Step relief for easy removal and gripping on Z style bushings
- Type and size clearly marked on surface of head diameter for easy identification
- 100% Satisfaction Guaranteed!

A O.D.	E Length Under Head	D Head Thick.	C Slot Length	B I.D.	Part Number	Price Each
3/4"				1/4"	TBZ-07-0250-B	\$60.52
				5/16"	TBZ-07-0312-B	
				3/8"	TBZ-07-0375-B	
1"	2-3/4"	1/2"	2-3/8"	1/4"	TBZ-10-0250-B	\$72.80
				5/16"	TBZ-10-0312-B	
				3/8"	TBZ-10-0375-B	
1-1/4"	3"	5/8"	2-5/8"	1/2"	TBZ-10-0500-B	\$82.32
				5/8"	TBZ-10-0625-B	
				3/4"	TBZ-10-0750-B	
				3/8"	TBZ-12-0375-B	
				5/8"	TBZ-12-0625-B	
				3/4"	TBZ-12-0750-B	
				7/8"	TBZ-12-0875-B	
				1"	TBZ-12-1000-B	

A O.D.	E Length Under Head	D Head Thick.	C Slot Length	B I.D.	Part Number	Price Each
1-1/2"	3-1/4"	3/4"	2-7/8"	3/8"	TBZ-15-0375-B	\$87.22
				1/2"	TBZ-15-0500-B	
				5/8"	TBZ-15-0625-B	
				3/4"	TBZ-15-0750-B	
				7/8"	TBZ-15-0875-B	
1-3/4"	3-1/2"	3/4"	3-1/8"	1"	TBZ-15-1000-B	\$92.30
				1-1/4"	TBZ-15-1250-B	
				1/2"	TBZ-17-0500-B	
				5/8"	TBZ-17-0625-B	
				3/4"	TBZ-17-0750-B	
2"	3-3/4"	3/4"	3-3/8"	7/8"	TBZ-17-0875-B	\$98.90
				1"	TBZ-17-1000-B	
				1-1/4"	TBZ-17-1250-B	
				1-1/2"	TBZ-17-1500-B	
				1-3/4"	TBZ-20-1750-B	

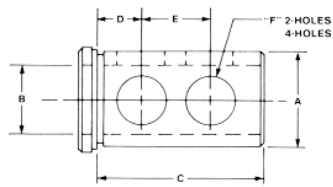
## TYPE J BUSHINGS

Type J bushings have clearance holes so that you can clamp directly on the tool with set screws for positive alignment of the cutting edge of the tool.



### FEATURES:

- Increased step diameter for easy and perfect sealing.
- Concentric ground and diamond polished on OD & ID resulting in a mirror smooth finish
- "Easy Entry" feature on OD for quick insertion



A O.D.	C	E	D	F	B I.D.	Part Number	Price Each
3/4"	1-1/2"	13/16"	3/8"	3/8"	1/4"	TBJ-07-0250-B	\$38.33
					5/16"	TBJ-07-0312-B	
					3/8"	TBJ-07-0375-B	
1"	1-3/4"	7/8"	7/16"	5/8"	1/2"	TBJ-07-0500-B	\$42.37
					3/8"	TBJ-10-0375-B	
					1/2"	TBJ-10-0500-B	
1-1/4"	2-1/8"	1"	5/8"	5/8"	5/8"	TBJ-10-0625-B	\$45.56
					3/4"	TBJ-10-0750-B	
					3/8"	TBJ-12-0375-B	
					1/2"	TBJ-12-0500-B	
					5/8"	TBJ-12-0625-B	
					3/4"	TBJ-12-0750-B	
					7/8"	TBJ-12-0875-B	
					1"	TBJ-12-1000-B	

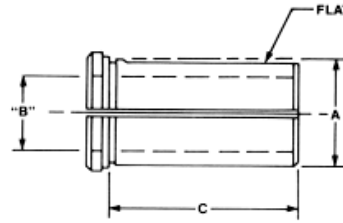
A O.D.	C	E	D	F	B I.D.	Part Number	Price Each
1-1/2"	2-1/2"	1-1/8"	11/16"	7/8"	3/8"	TBJ-15-0375-B	\$51.11
					1/2"	TBJ-15-0500-B	
					5/8"	TBJ-15-0625-B	
					3/4"	TBJ-15-0750-B	
					7/8"	TBJ-15-0875-B	
1-3/4"	3"	1-1/4"	3/4"	7/8"	1"	TBJ-15-1000-B	\$60.52
					1-1/4"	TBJ-15-1250-B	
					1/2"	TBJ-17-0500-B	
					5/8"	TBJ-17-0625-B	
					3/4"	TBJ-17-0750-B	
2"	3-1/2"	1-1/2"	3/4"	1"	7/8"	TBJ-17-0875-B	\$64.55
					1"	TBJ-17-1000-B	
					1-1/4"	TBJ-17-1250-B	
					1-1/2"	TBJ-17-1500-B	
					1-3/4"	TBJ-20-1750-B	

Call Us Or Visit Our Website For Our Complete Selection!

# LATHE TOOLHOLDER BUSHINGS

## TYPE B BUSHINGS

These split bushings are made with flexible manufacturing systems for all types and sizes of NC and CNC lathes and chucks. Used to adapt drills, boring bars and other shank tools, these bushings are heat treated and precision ground concentric.



**FEATURES:**

- Increased step diameter for easy and perfect sealing.
- Concentric ground and diamond polished OD & ID resulting in a mirror smooth finish
- "Easy Entry" feature on OD for quick insertion
- Wrench flats for easy removal
- Step relief for easy removal and gripping on Z style bushings
- Type and size clearly marked on surface of head diameter for easy identification
- 100% Satisfaction Guaranteed!

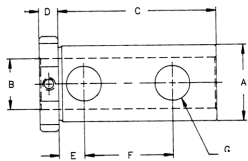
A OD	C	B ID	Part Number	Price Each
3/4	1-1/2	1/4	TBB-07-0250-B	\$44.83
		5/16	TBB-07-0312-B	
		3/8	TBB-07-0375-B	
1	1-3/4	1/2	TBB-07-0500-B	\$49.31
		3/8	TBB-10-0375-B	
		1/2	TBB-10-0500-B	
		5/8	TBB-10-0625-B	
1-1/4	2-1/8	3/4	TBB-10-0750-B	\$53.79
		3/8	TBB-12-0375-B	
		1/2	TBB-12-0500-B	
		5/8	TBB-12-0625-B	
		3/4	TBB-12-0750-B	
		7/8	TBB-12-0875-B	
1	TBB-12-1000-B			

A OD	C	B ID	Part Number	Price Each
1-1/2	2-1/2	3/8	TBB-15-0375-B	\$58.27
		1/2	TBB-15-0500-B	
		5/8	TBB-15-0625-B	
		3/4	TBB-15-0750-B	
		7/8	TBB-15-0875-B	
		1	TBB-15-1000-B	
1-3/4	3	1-1/4	TBB-15-1250-B	\$71.45
		1/2	TBB-17-0500	
		5/8	TBB-17-0625	
		3/4	TBB-17-0750	
		7/8	TBB-17-0875	
		1	TBB-17-1000	
		1-1/4	TBB-17-1250	
1-1/2	TBB-17-1500			

## TYPE LB BUSHINGS

This long solid body bushing has four clearance holes so that you can clamp directly on the tool with set screws for positive alignment of the cutting edge of the tool. Manufactured to include clearance notches for coolant. Hardened and precision ground concentric.

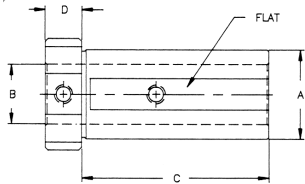
FOR OKUMA  
LB-15 LATHES



A O.D.	C	D	E	F	B I.D.	Part Number	Price Each
1-1/2"	3-1/8"	3/8"	1/2"	1-3/4"	1/4"	TBLB-15-0250-B	\$93.10
					3/8"	TBLB-15-0375-B	
					1/2"	TBLB-15-0500-B	
					5/8"	TBLB-15-0625-B	
					3/4"	TBLB-15-0750-B	
					7/8"	TBLB-15-0875-B	
					1"	TBLB-15-1000-B	
1-1/4"	TBLB-15-1250-B						

## TYPE LBF BUSHINGS

Manufactured with a flat for clamping the toolholder and two set screws for clamping a variety of drill, boring bars and other shank tools. Equipped with two clearance notches for coolant. Heat treated and precision ground concentric.

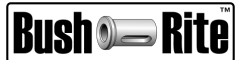


A OD	C	D	B ID	Part Number	Price Each
1-1/2"	3-5/32"	5/8"	1/4"	TBLBF-15-0250-B	\$89.98
			3/8"	TBLBF-15-0375-B	
			1/2"	TBLBF-15-0500-B	
			5/8"	TBLBF-15-0625-B	
			3/4"	TBLBF-15-0750-B	
			7/8"	TBLBF-15-0875-B	
			1"	TBLBF-15-1000-B	
1-1/4"	TBLBF-15-1250-B				

## 5C COLLET TOOL HOLDER

**FEATURES:**

- Inexpensive way to hold tooling in CNC and conventional lathes and chuck turrets
- Reduce need for separate sleeves and tool holders for different boring bar sizes
- Made in USA
- Collets sold separately



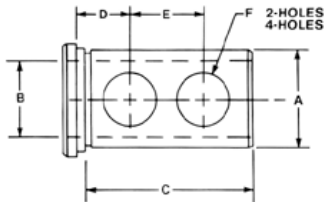
Buy The Set And Save 10%!

OD	Part Number	Price Each
1-1/2"	CH150	\$50.00
1-3/4"	CH175	\$65.00
2"	CH200	\$70.00
Buy 1 Of Each-SAVE 10%!		

Call Us Today For All Of Your Machine Tool Needs!

## TYPE DD BUSHINGS

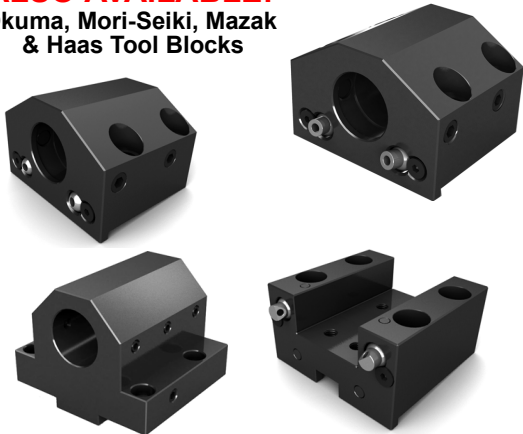
Combination of the industry standard "B" style split bushing and "J" set screw clearance bushing design. This bushing has clearance holes and a split milled flat, can be used as a conventional "B" style or "J" style bushing.



A Outside Dia	C Length Under Head	D	E	F Hole Size	No. of Holes	B Inside Dia.	Part Number	Price Each
1-1/2	2-1/2	11/16	1-1/8	7/8	2	3/8	TBDD-15-0375	<b>\$67.75</b>
						1/2	TBDD-15-0500	
						5/8	TBDD-15-0625	
						3/4	TBDD-15-0750	
						7/8	TBDD-15-0875	
						1	TBDD-15-1000	
1-3/4	3	3/4	1-1/4	7/8	2	1-1/4	TBDD-15-1250	<b>\$73.64</b>
						1/2	TBDD-17-0500	
						5/8	TBDD-17-0625	
						3/4	TBDD-17-0750	
						7/8	TBDD-17-0875	
						1	TBDD-17-1000	
2	3 1/2	3/4	1-1/2	1	2	1-1/2	TBDD-17-1500	<b>\$81.50</b>
						1/2	TBDD-20-0500	
						5/8	TBDD-20-0625	
						3/4	TBDD-20-0750	
						7/8	TBDD-20-0875	
						1	TBDD-20-1000	
2-1/2	4	7/8	1-3/4	1-1/4	2	1-1/2	TBDD-20-1250	<b>\$95.24</b>
						1-3/4	TBDD-20-1750	
						1/2	TBDD-25-0500	
						5/8	TBDD-25-0625	
						3/4	TBDD-25-0750	
						7/8	TBDD-25-0875	
						1	TBDD-25-1000	
						1-1/4	TBDD-25-1250	
						1-1/2	TBDD-25-1500	
						1-3/4	TBDD-25-1750	
3	4-1/2	1	2	1-1/4	4	2	TBDD-25-2000	<b>\$114.87</b>
						2-1/4	TBDD-25-2250	
						1	TBDD-30-1000	
						1-1/4	TBDD-30-1250	
						1-1/2	TBDD-30-1500	
						1-3/4	TBDD-30-1750	
3-1/2	5-1/4	1-1/4	2-1/2	1-1/4	4	2	TBDD-30-2000	<b>\$144.33</b>
						2-1/4	TBDD-30-2250	
						1-1/2	TBDD-35-1500	
						1-3/4	TBDD-35-1750	
						2	TBDD-35-2000	
						2-1/4	TBDD-35-2250	
2-1/2	TBDD-35-2500							
						3	TBDD-35-3000	

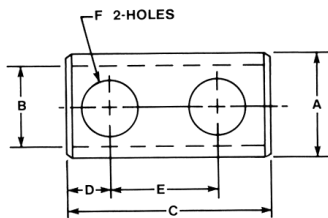
### ALSO AVAILABLE!

Okuma, Mori-Seiki, Mazak & Haas Tool Blocks



## TYPE L BUSHINGS

"L" style bushings are used to adapt drill, boring bars and shank tools to any size in a standard turret or toolholder. All "L" style bushings have set screw clearance holes opposite the slot and have a split with a flat on the O.D.



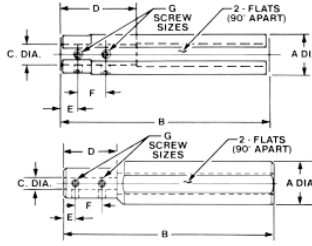
A O D	C OAL	D	E	F	No Of Holes	B I D	Part Number	Price Each
1-1/2	3	3/4	1-5/8	7/8	2	3/8	TBL-15-0375	<b>\$68.73</b>
						1/2	TBL-15-0500	
						5/8	TBL-15-0625	
						3/4	TBL-15-0750	
						1	TBL-15-1000	
						1-1/4	TBL-15-1250	

A O D	C OAL	D	E	F	No Of Holes	B I D	Part Number	Price Each
1-3/4	3	3/4	1-5/8	7/8	2	1/2	TBL-17-0500	<b>\$75.60</b>
						5/8	TBL-17-0625	
						3/4	TBL-17-0750	
						1	TBL-17-1000	
						1-1/4	TBL-17-1250	
						1-1/2	TBL-17-1500	
2-1/4	4-1/2	7/8	2	1	2	5/8	TBL-22-0625	<b>\$83.46</b>
						3/4	TBL-22-0750	
						1	TBL-22-1000	
						1-1/4	TBL-22-1250	
						1-1/2	TBL-22-1500	
						1-3/4	TBL-22-1750	
2-3/4	4-1/2	7/8	2	1	2	2	TBL-22-2000	<b>\$99.16</b>
						3/4	TBL-27-0750	
						1	TBL-27-1000	
						1-1/4	TBL-27-1250	
						1-1/2	TBL-27-1500	
						1-3/4	TBL-27-1750	
						2	TBL-27-2000	
						2-1/4	TBL-27-2250	

Call Us Or Visit Our Website For Our Complete Selection!

# LATHE TOOLHOLDER BUSHINGS

## BORING BAR SLEEVES



Boring bar sleeves are used to adapt all boring bar or shank type tools to any CNC turning machine or machining center for extensions or hard to reach areas. They are hardened, precision ground concentric. "B" sleeves are diamond polished, while sleeves 1-3/4 OD and larger are black oxidized. Innovative design on the 1-1/2 OD boring bar sleeves helps the tools stay cool longer by projecting the coolant directly on the cutting edge.

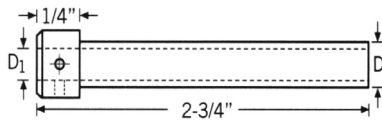
A	B	Scw Size	E	F	D	C	Part Number	Price Each [F]	
3/4	5	10-32	5/16	5/8	1-1/2	1/4	TBBS-07-0250-B*	\$80.05	
					1-1/2	5/16	TBBS-07-0312-B		
					1-1/2	3/8	TBBS-07-0375-B		
1	6	1/4-28	7/16	5/8	3	1/2	TBBS-07-0500-B	\$82.32	
					1-3/4	3/16	TBBS-10-0187-B*		
					1-3/4	1/4	TBBS-10-0250-B*		
1-1/4	6-1/2	1/4-28	7/16	5/8	1-3/4	3/8	TBBS-10-0312-B*	\$97.12	
					1-3/4	5/16	TBBS-10-0375-B*		
					2	1/2	TBBS-10-0500-B		
1-1/4	6-1/2	10-32	7/16	5/8	1-1/2	3/8	TBBS-12-0375-B*	\$100.33	
					5/8	2-1/4	1/2		TBBS-12-0500-B*
					3/4	2-1/4	5/8		TBBS-12-0625-B*
1-1/2	7	5/16-24	7/16	5/8	3/4	3	3/4	TBBS-12-0750-B	\$100.33
					3/4	4	7/8	TBBS-12-0875-B	
					3/4	4	1	TBBS-12-1000-B	
1-1/2	8	1/4-28	7/16	5/8	2	3/8	TBBS-15-0375-B*	\$100.33	
					11/16	2-1/4	1/2		TBBS-15-0500-B*
					3/4	2-1/4	5/8		TBBS-15-0625-B*
1-1/2	8	1/4-28	7/16	5/8	3/4	2-1/2	3/4	TBBS-15-0750-B*	\$100.33
					3/4	3	7/8	TBBS-15-0875-B	
					7/8	4	1	TBBS-15-1000-B	

\*Reduced nose diameter

A	B	Scw Size	E	F	D	C	Part Number	Price Each [D]		
1-3/4	8	5/16-24	5/16	5/8	2-1/2	1/2	TBBS-17-0500	\$106.06		
		5/16-24	7/16	1	2-1/2	5/8	TBBS-17-0625			
		3/8-24	7/16	1	2-1/2	7/8	TBBS-17-0875			
2	9	7/16-20	7/16	1	2-1/2	1	TBBS-17-1000	\$117.18		
					2	5/8	TBBS-20-0625			
					2-3/4	3/4	TBBS-20-0750			
2-1/2	10	1/2-20	7/16	1	2	7/8	TBBS-20-0875	\$137.46		
					3-1/2	5/8	TBBS-20-1000			
					5/8	1	3		1-1/4	TBBS-20-1250
2-1/2	10	1/2-20	7/16	1	3-1/2	3/4	TBBS-25-0625	\$137.46		
					3-1/2	5/8	TBBS-25-0750			
					4	1	TBBS-25-1000			
3	11-1/2	1/2-20	1/2	1	4	1	TBBS-25-1250	\$175.00		
					3-1/2	1-1/2	TBBS-30-1000			
					4-1/2	1-1/4	TBBS-30-1250			
4	14	5/8-18	1/2	1	3-3/4	1-3/4	TBBS-30-1500	\$304.00		
					3-3/4	1-3/4	TBBS-30-1750			
					4-1/2	2	TBBS-30-2000			
4	14	5/8-18	19/32	1-7/8	3-3/4	1-1/2	TBBS-40-1500	\$304.00		
					3-3/4	1-3/4	TBBS-40-1750			
					3-3/4	2	TBBS-40-2000			
4	14	5/8-18	5/8	2	4	2-1/2	TBBS-40-2500	\$304.00		
					3/4	1-1/4	4		3	TBBS-40-3000

## TYPE H BORING BAR SLEEVES

SHORT LENGTH-Ideal For Solid Carbide Boring, Grooving And Threading Tools

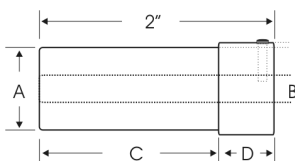


OD D2	OAL	Head Thick.	ID D1	Industry Reference #	FLATTED SHANK Part Number	ROUND SHANK Part Number	Price Each	Screw Size
1/2"	2-3/4"	1/4"	1/8	MI-TH84	TBH-05-0125-FB	TBH-05-0125-B	\$27.53	6-40 UNF x 1/4
				MI-TH85	TBH-05-0187-FB	TBH-05-0187-B		6-40 UNF x 3/16
				MI-TH86	TBH-05-0250-FB	TBH-05-0250-B		6-40 x 1/8
				MI-TH87	TBH-05-0312-FB	TBH-05-0312-B		
				MI-TH88	TBH-05-0375-FB	TBH-05-0375-B		
5/8"	2-3/4"	1/4"	1/8	MI-TH104	TBH-06-0125-FB	TBH-06-0125-B	\$27.53	6-40 UNF x 5/16
				MI-TH105	TBH-06-0187-FB	TBH-06-0187-B		6-40 UNF x 1/4
				MI-TH106	TBH-06-0250-FB	TBH-06-0250-B		6-40 x 3/16
				MI-TH107	TBH-06-0312-FB	TBH-06-0312-B		
				MI-TH108	TBH-06-0375-FB	TBH-06-0375-B		
3/4"	2-3/4"	1/4"	1/8	MI-TH204	TBH-07-0125-FB	TBH-07-0125-B	\$34.27	6-40 UNF x 3/8
				MI-TH205	TBH-07-0187-FB	TBH-07-0187-B		6-40 UNF x 5/16
				MI-TH206	TBH-07-0250-FB	TBH-07-0250-B		6-40 x 1/4
				MI-TH207	TBH-07-0312-FB	TBH-07-0312-B		
				MI-TH208	TBH-07-0375-FB	TBH-07-0375-B		

## TYPE G BUSHINGS

For Gang Tools

- 3/4" Long head helps equalize the tool length compared to collet chuck and OD tool holders.
- Set screw helps preset the tools flat on the bushing for ease of clamping
- Ground concentric



A OD	C Length Under Head	D Head Thickness	Clearance Groove	Head Dia. Nominal	B ID	Part Number	Price Each	Screw Size
<b>Part Stop/ Plug</b>								
3/4	1-1/4	3/4	0.04	7/8	-	TBG-07-PLUG-B	\$28.08	-
<b>Bushings</b>								
3/4	1-1/4	3/4	0.04	7/8	1/8	TBG-07-0125-B	\$33.65	6-40 x 3/8
					3/16	TBG-07-0187-B		6-40 x 3/8
					1/4	TBG-07-0250-B		1/4 x 5/16
					5/16	TBG-07-0312-B		1/4 x 5/16
					3/8	TBG-07-0375-B		1/4 x 5/16
					1/2	TBG-07-0500-B		1/4 x 3/16

Buy All 7 And Save 10% From Individual Prices

Call Us Today For All Of Your Machine Tool Needs!