

KDK STYLE QUICK CHANGE TOOL POSTS

#101/151/201 KDK STYLE TURNING & FACING HOLDER

BEST VALUE

- Interchangeable with KDK same series tool holders
- No. 101 is for KDK-100 quick change tool posts
- No. 151 is for KDK-150 quick change tool posts
- All working parts are hardened and ground

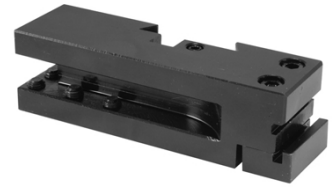


Holder No.	Tool Bit Cap.	Lathe Swing	Part Number	Price
101	1/2"	12-16"	KDK-101	\$47.00
151	5/8"	15-18"	KDK-151	\$58.00
201	3/4"	18-24"	KDK-201	\$79.00

#104/154/204 KDK STYLE PARTING BAR HOLDER

BEST VALUE

- Interchangeable with KDK same series tool holders
- No. 104 is for KDK-100 quick change tool posts
- No. 154 is for KDK-150 quick change tool posts
- All working parts are hardened and ground



Holder No.	Blade Cap.	Lathe Swing	Part Number	Price
104	1/8" x 11/16"	12-16"	KDK-104	\$86.00
154	1/8" x 7/8"	15-18"	KDK-154	\$92.00
204	1/8" X 1-1/8"	18-24"	KDK-204	\$125.00

#102/152/202 KDK STYLE THREADING & FACING HOLDER

BEST VALUE

- Interchangeable with KDK same series tool holders
- No. 102 is for KDK-100 quick change tool posts
- No. 152 is for KDK-150 quick change tool posts
- All working parts are hardened and ground



Holder No.	Tool Bit Cap.	Lathe Swing	Part Number	Price
102	1/2"	12-16"	KDK-102	\$62.00
152	5/8"	15-18"	KDK-152	\$83.00
202	3/4"	18-24"	KDK-202	\$99.50

#105/155/205 KDK STYLE BORING BAR HOLDER

BEST VALUE

- No. 104 is for KDK-100 quick change tool posts
- No. 154 is for KDK-150 quick change tool posts
- All working parts are hardened and ground

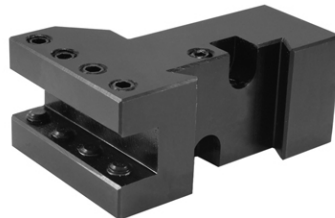


Holder No.	Boring Bar Cap.	Lathe Swing	Part Number	Price
105	1" hole	12-16"	KDK-105	\$64.00
155	1-1/4" hole	15-18"	KDK-155	\$73.00
205	1-1/2" hole	18-24"	KDK-205	\$93.00

#103/153/203 KDK STYLE EXTENSION TURNING BAR HOLDER

BEST VALUE

- Interchangeable with KDK same series tool holders
- No. 103 is for KDK-100 quick change tool posts
- No. 153 is for KDK-150 quick change tool posts
- All working parts are hardened and ground



Holder No.	Tool Bit Cap.	Lathe Swing	Part Number	Price
103	1/2"	12-16"	KDK-103	\$89.00
153	5/8"	15-18"	KDK-153	\$96.00
203	3/4"	18-24"	KDK-203	\$125.00

#119 KDK STYLE 5C COLLET HOLDER

BEST VALUE

- Interchangeable with KDK same series tool holders
- No. 119 is for kdk-100/150 quick change tool posts
- For lathes having 1" center height or more
- All working parts are hardened and ground
- Includes spanner wrench and lock ring



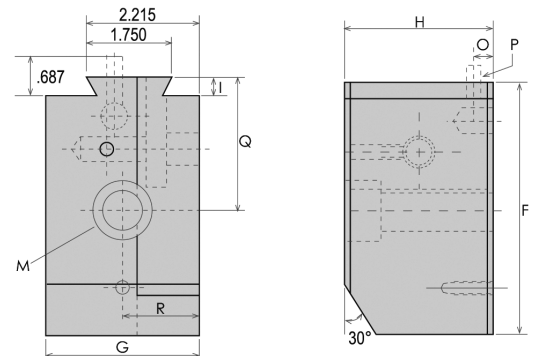
Holder No.	Part Number	Price
119	KDK-119	\$84.38

KDK STYLE TOOL POSTS SERIES 100, 150 & 200

BEST VALUE



- Interchangeable with KDK same series
- All working parts are hardened and ground
- Lathe Swing:
12-16" (100 series)
15-18" (150 series)
18-24" (200 series)
- Lock down bolt diameter:
7/16 (100 series)
5/8" (150 series)
3/4" (200 series)
- T-slot nut and mounting bolt not included



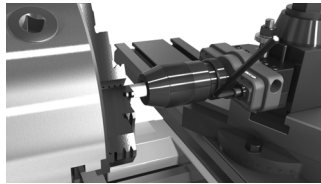
Series	F	G	H	I	M	O	P	Q	R	Part Number	Price
100	3.50	2.50	2.25	.312	7/16"	.331	1/4"	.875	1.375	KDK-100	\$213.00
150	4.37	2.50	2.25	.312	5/8"	.331	5/16"	2.312	1.250	KDK-150	\$262.00
200	5.00	2.87	3.00	.312	3/4"	.331	5/16"	2.562	1.437	KDK-200	\$340.00

Call Us Today For All Of Your Machine Tool Needs!

TOOL POST DRILL CHUCK

Designed to decrease the time it takes to drill a hole on the lathe. Peck drilling can be performed much faster since the drill bit is held at the tool post instead of the tailstock. Hole depths can also be monitored on the carriage DRO during the drilling process.

EDGE TECHNOLOGY



Tool Post Drill Chuck
Part # EDGE-41000
\$99.99 ea

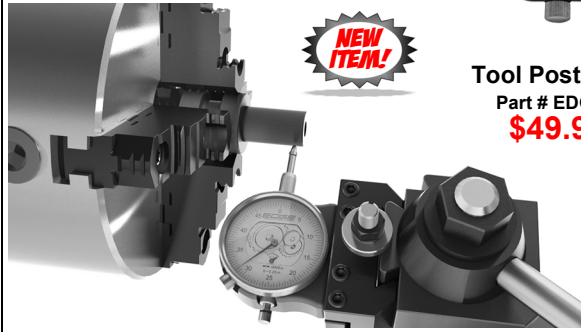
- Precision 1/32"-1/2" keyless drill chuck included
- Fast and accurate procedure to align drill chuck with spindle
- Precision alignment pin magnetically held in body cavity for convenience
- Mounts in any tool post tool holder
- Made from high strength aluminum
- Durable anodized finish



TOOL POST INDICATOR

Reduce set up time with the Tool Post Indicator by Edge Technology. This unit is much faster to install and more rigid than a mag base indicator holder. It is the best way to align a work piece in a 4 jaw chuck.

EDGE TECHNOLOGY



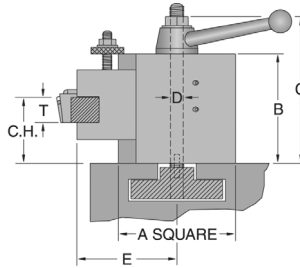
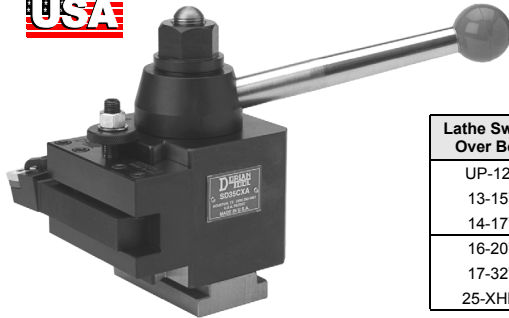
Tool Post Indicator
Part # EDGE-42000
\$49.99 ea

- High resolution 0.0005" indicator included
- Mounts in any tool post tool holder
- Body made from high strength aluminum
- Durable anodized finish
- Includes padded case

SUPER QUICK CHANGE TOOL POST

Engineered and built to perform with precision, rigidity, and simplicity from the tool-room lathe to the extra heavy duty lathe.

MADE IN THE USA



DORIAN TOOL

- Maintenance Free
- Dorian tool posts are fully interchangeable with other industry standard tool posts
- Repetitive accuracy within millionths
- New locking system eliminates the worm gear and gib, which are the most affected by wear & tear usage
- Holding force produces over 20,000 lbs per sq. in.

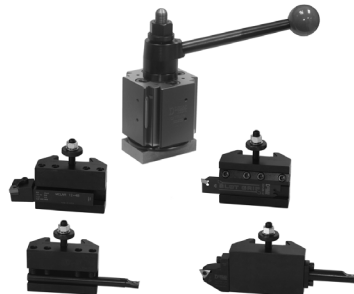
Lathe Swing Over Bed	A	B	C	D	E	T-Tool Cap.	C.H.		Desc.	Part Number	Price
							Min.	Max.			
UP-12"	2.50	2.250	3.937	0.500	1.875	0.500	0.875	1.625	SD25AXA	DN01000	\$342.70
13-15"	3.00	2.750	4.437	0.625	2.375	0.625	1.062	2.125	SD30BXA	DN01002	\$428.74
14-17"	3.50	3.250	5.500	0.750	2.687	0.750	1.250	2.250	SD35CXA	DN01004	\$586.46
16-20"	4.00	3.750	6.375	0.875	3.250	1.000	1.562	2.750	SD40CA	DN01006	\$737.30
17-32"	5.00	4.625	7.375	1.000	4.125	1.250	2.000	3.375	SD50DA	DN01008	\$1,055.87
25-XHD	6.00	5.000	8.125	1.125	5.187	1.500	2.500	3.500	SD60EA	DN01010	\$1,629.66

QUADRA INDEX TOOL POST SETS

- Absolute zero backlash
- Four quick change tool holders locked simultaneously
- The Quadra offers repetitive accuracy within millionths.
- New patented locking system eliminates the traditional worm gear and gib which are the most affected by wear and tear.
- First Time Buyers Set includes 1 tool post and 4 holders.
- Includes 1 square shank tool, 1 boring bar, 1 cut-off blade, 1 internal threading bar, and 4 inserts

MADE IN THE USA

DORIAN TOOL

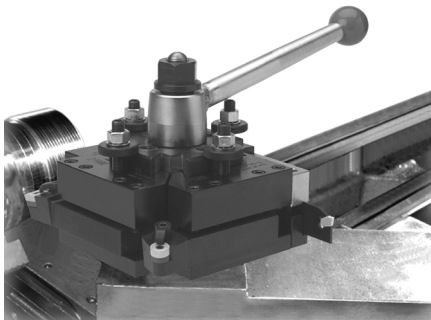


- First Time Buyers Set Includes:**
- Tool post • No. 1 Turning & facing holder
 - No. 2 Turning, facing & boring holder
 - No. 7-71C Cut-off holder
 - No 881 Threading & grooving holer

Holders Tooled Up At No Charge With:

- | | | |
|------------------------|--|--------------------------------------|
| 1) STNCR toolholder | 2) Gold coated TCMT turning & boring inserts | 1) Gold coated TNMC threading insert |
| 1) SI-STCMB boring bar | 1) High Speed cut-off blade | 1) Gold coated Laydown insert |

Set Description	QITP25-FTB	QITP30-FTB	QITP35-FTB	QITP40-FTB
Part Number	DN00056	DN00058	DN00060	DN00062
Lathe Swing	Up to 12"	13"-15"	14"-17"	16"-20"
Price	\$1,539.61	\$1,727.27	\$2,053.70	\$2,532.97



Call Us Or Visit Our Website For Our Complete Selection!

LATHE CHUCKS
LIVE CENTERS

VICE JAWS
VICE ACCESSORIES

STRAIGHT SHANK
COLLET HOLDERS

TAP HOLDERS
DRILL CHUCKS

CARBIDE INSERTS
THREADING/GROOVING

CUTTING TOOLS
MACHINERY

PRECISION TOOLS
DEBURRING

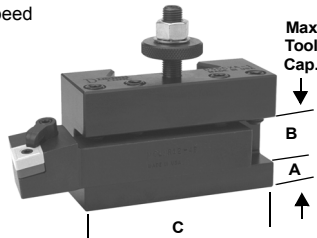
COOLANT/FLUIDS
TOOL STORAGE

QUICK CHANGE TOOL POST HOLDERS



TURNING & FACING HOLDER NO. 1

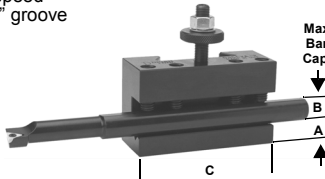
For turning & facing with high speed or carbide square shank tools.



A	B	C	Desc. SDN	Part Number	Price	QITP	Part Number	Price
.375	.500	2.75	D25AXA-1	DN01100	\$58.56	QITP25-1	DN00100	\$91.26
.437	.625	3.25	D30BXA-1	DN01250	\$66.48	QITP30-1	DN00250	\$109.51
.500	.750	3.75	D35CXA-1	DN01400	\$86.44	QITP35-1	DN00400	\$135.37
.562	1.00	4.50	D40CA-1	DN01550	\$107.35	QITP40-1	DN00550	\$150.58
.750	1.25	6.00	D50DA-1	DN01700	\$172.55	QITP50-1	DN00700	\$248.55
1.00	1.50	7.00	D60EA-1	DN01850	\$267.66	QITP60-1	DN00850	\$364.85

TURNING, FACING & BORING HOLDER NO. 2

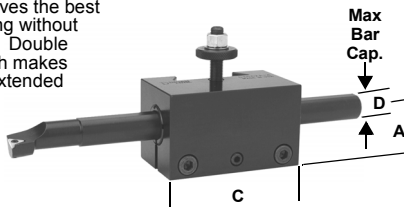
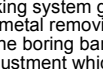
For turning & facing with high speed or square shank tool, plus a "V" groove for holding a boring bar



A	B	C	Desc. SDN	Part Number	Price	QITP	Part Number	Price
.375	.500	2.75	D25AXA-2	DN01104	\$61.34	QITP25-2	DN00104	\$97.33
.437	.625	3.25	D30BXA-2	DN01254	\$73.32	QITP30-2	DN00254	\$115.59
.500	.625	3.75	D35CXA-2	DN01404	\$90.63	QITP35-2	DN00404	\$150.58
.562	.750	4.50	D40CA-2	DN01554	\$114.31	QITP40-2	DN00554	\$167.30
.750	.875	6.00	D50DA-2	DN01704	\$184.77	QITP50-2	DN00704	\$267.66
1.00	1.25	7.00	D60EA-2	DN01854	\$277.23	QITP60-2	DN00854	\$374.41

HEAVY DUTY BORING BAR HOLDER No. 4

Precision ground bore with 360° collar locking system gives the best rigidity in metal removing without scarring the boring bar. Double height adjustment which makes the tool reversible for extended center height range.



A	B	C	Desc. SDN	Part Number	Price	QITP	Part Number	Price
0.625	.750	2.75	D25AXA-4	DN01110	\$104.18	QITP25-4	DN00110	\$136.96
0.750	1.00	3.25	D30BXA-4	DN01260	\$121.59	QITP30-4	DN00260	\$153.74
1.000	1.00	3.75	D35CXA-4	DN01410	\$139.76	QITP35-4	DN00410	\$184.48
1.125	1.25	4.50	D40CA-4	DN01560	\$167.71	QITP40-4	DN00560	\$223.61
1.500	1.50	6.00	D50DA-4	DN01710	\$263.54	QITP50-4	DN00710	\$332.35
1.750	2.00	7.00	D60EA-4	DN01860	\$428.34	QITP60-4	DN00860	\$486.08

HIGH SPEED & CARBIDE COMBINATION CUTOFF HOLDER No. 7-71C

For High Speed and Dorcut True Grip blades. Gives max. rigidity & performance in cutting & face grooving. The taper lock system & double height adjustment make it reversible for positioning.

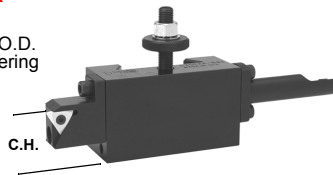


Cutting tool sold separately

DorCut Blades	High Speed	Desc. SDN	Part Number	Price	Desc. QITP	Part Number	Price
19-2	P3	D25AXA-7-71C	DN01126	\$170.22	QITP25-7-71C	DN00126	\$203.19
19-2	P3	D30BXA-7-71C	DN01276	\$194.06	QITP30-7-71C	DN00276	\$222.86
26-2 to 26-6	P5	D35CXA-7-71C	DN01428	\$209.22	QITP35-7-71C	DN00428	\$250.90
26-2 to 26-6	P5	D40CA-7-71C	DN01576	\$240.49	QITP40-7-71C	DN00576	\$278.33
32-3 to 32-9	P9	D50DA-7-71C	DN01726	\$289.97	QITP50-7-71C	DN00726	\$296.48
32-3 to 32-9	P9	D60EA-7-71C	DN01876	\$328.21	QITP60-7-71C	DN00876	\$415.69

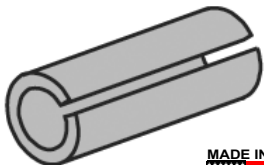
UNIVERSAL THREADING & GROOVING HOLDER No. 881

The most advanced tool holder for O.D. and I.D. threading. Capable of covering all threading requirements. Using standard carbide inserts.



CH	Supplied Insert	Desc. SDN	Part Number	Price	Desc. QITP	Part Number	Price
.875	TNMC-32	D25AXA-881	DN01132	\$183.87	QITP25-881	DN00132	\$215.52
1.00	TNMC-32	D30BXA-881	DN01282	\$202.74	QITP30-881	DN00282	\$231.33
1.25	TNMC-32	D35CXA-881	DN01434	\$217.48	QITP35-881	DN00434	\$255.05
1.50	TNMC-32	D40CA-881	DN01582	\$243.19	QITP40-881	DN00582	\$292.60

REDUCER BUSHINGS



No. 4 Holder Style	O.D.	I.D.	Desc.	Part Number	Price Each	No. 41 Holder Style	O.D.	I.D.	Desc.	Part Number	Price Each
25-4	0.75	0.50	D25-4B	DN03705	\$82.34	25-41	1.00	0.75	D25-41B	DN03719	\$89.19
30-4	1.00	0.75	D30-4B	DN03707	\$89.19	30-41	1.25	1.00	D30-41B	DN03721	\$104.06
35-4	1.00	0.75	D35-4B	DN03709	\$96.06	35-41	1.25	1.00	D35-41B	DN03723	\$112.06
40-4	1.25	1.00	D40-4B	DN03711	\$104.06	40-41	1.50	1.25	D40-41B	DN03725	\$153.61
50-4	1.50	1.25	D50-4B	DN03713	\$153.61	50-41	2.00	1.50	D50-41B	DN03727	\$218.03
60-4	2.00	1.50	D60-4B	DN03715	\$218.03	60-41	2.50	2.00	D60-41B	DN03729	\$265.29

Call Us Today For All Of Your Machine Tool Needs!

QUICK CHANGE TOOL POSTS

B

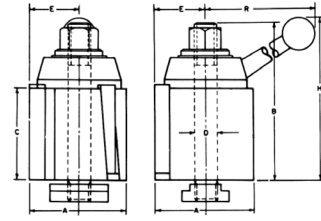
QUICK CHANGE TOOL POST & SETS

- Takes only seconds to change tools
- Rugged-no chatter or vibration
- No time wasted with shims
- Unlimited versatility
- Safe and easy to operate
- Speed your lathe operations up to 90%

SETS INCLUDE:

- 1 Tool Post
- # 1: Turning and facing holder
- # 2: Boring, turning and facing holder
- # 4D: Boring bar holder
- # 7: Universal parting (part-off) blade holder

Full Line Available!
Please call for more information.

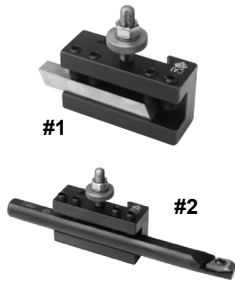


INDIVIDUAL QUICK CHANGE TOOL POSTS

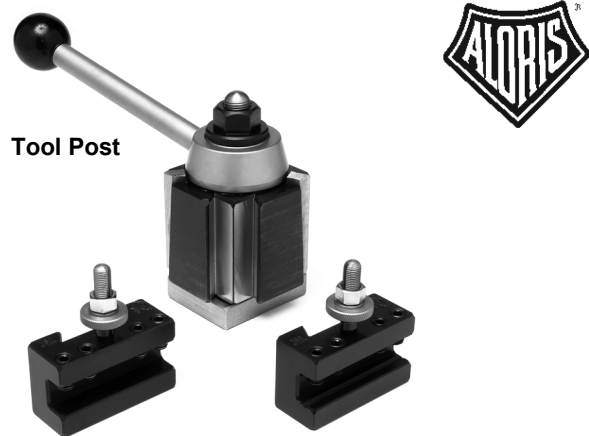
Series	A	B	C	D	E	H	R	Part Number	Price	Tool Post Sets	
										Part Number	Price
AXA	2-1/2	3-7/8	2-1/4	9/16	1-3/8	4-11/16	5-3/4	ALOR-AXA	\$357.00	ALOR-1-BS	\$651.00
BXA	3	4-5/8	2-3/4	5/8	1-5/8	5-9/16	7-5/16	ALOR-BXA	\$434.00	ALOR-2-BS	\$759.00
CXA	3-1/2	5-1/8	3	3/4	1-7/8	6-1/8	7-7/8	ALOR-CXA	\$592.00	ALOR-3-BS	\$972.00
CA	4	6-1/4	3-5/8	7/8	2-1/8	7	9	ALOR-CA	\$745.00	ALOR-4-BS	\$1,218.00
DA	5	7-5/8	4-5/8	1	2-11/16	8-3/4	10-7/8	ALOR-DA	\$1,052.00	ALOR-5-BS	\$1,685.00
EA	6	8-1/2	5	1-1/4	3-1/8	10	13-3/4	ALOR-EA	\$1,662.00	ALOR-6-BS	\$2,647.00

SUPER-PRECISION INTRO-PRO SETS

Precision engineered to ensure repetitive accuracy. Advanced design provides built-in quick tool changing, versatility with positive rigidity to meet the most exacting working tolerances. Quickly and easily installed on any engine lathe, bench or CNC lathe for a wide range of operations-from fine precision work to heavy duty cutting.



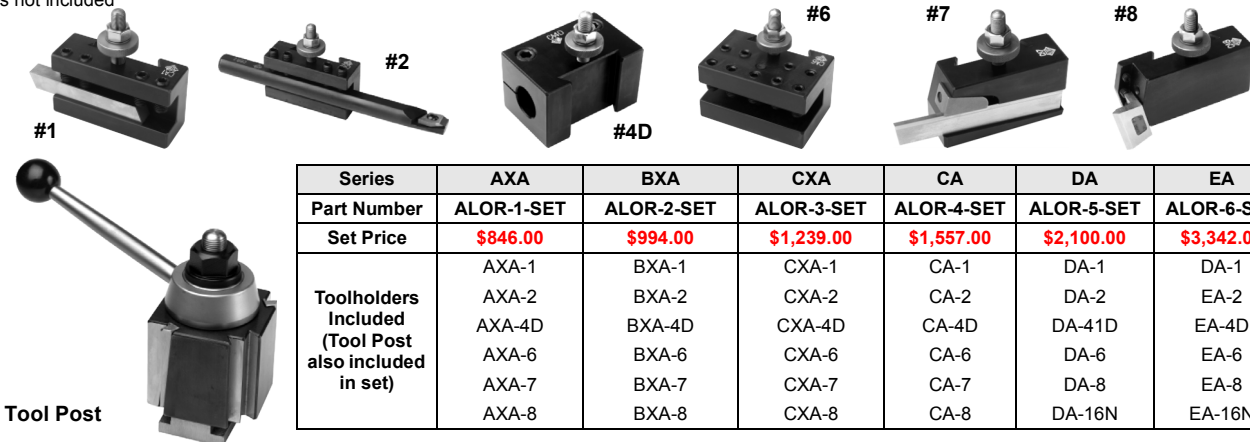
- Save By Buying The Set!
- All sets include tool post and custom T-bolt
- Intro-Pro 3 piece set include (1) tool post, (1) #1 turning & facing holder, and (1) #2 boring, turning & facing holder



Series	AXA	BXA	CXA	CA	DA	EA
Part Number	ALOR-1-IP	ALOR-2-IP	ALOR-3-IP	ALOR-4-IP	ALOR-5-IP	ALOR-6-IP
Set Price	\$454.10	\$548.15	\$733.00	\$916.00	\$1,303.00	\$2,064.00

7 PIECE TOOL POST AND HOLDERS SET

- Save by buying the set
- All sets include tool post and custom T-bolt
- Tools not included



Series	AXA	BXA	CXA	CA	DA	EA
Part Number	ALOR-1-SET	ALOR-2-SET	ALOR-3-SET	ALOR-4-SET	ALOR-5-SET	ALOR-6-SET
Set Price	\$846.00	\$994.00	\$1,239.00	\$1,557.00	\$2,100.00	\$3,342.00
Toolholders Included (Tool Post also included in set)	AXA-1	BXA-1	CXA-1	CA-1	DA-1	DA-1
	AXA-2	BXA-2	CXA-2	CA-2	DA-2	EA-2
	AXA-4D	BXA-4D	CXA-4D	CA-4D	DA-41D	EA-4D
	AXA-6	BXA-6	CXA-6	CA-6	DA-6	EA-6
	AXA-7	BXA-7	CXA-7	CA-7	DA-8	EA-8
	AXA-8	BXA-8	CXA-8	CA-8	DA-16N	EA-16N

Call Us Or Visit Our Website For Our Complete Selection!

LATHE CHUCKS
LIVE CENTERS

WISE JAWS
WISE ACCESSORIES

STRAIGHT SHANK
COLLET HOLDERS

TAP HOLDERS
DRILL CHUCKS

CARBIDE INSERTS
THREADING/GROOVING

CUTTING TOOLS
MACHINERY

PRECISION TOOLS
DEBURRING

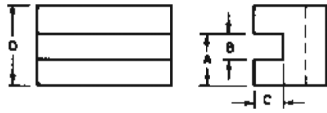
COOLANT/FLUIDS
TOOL STORAGE

QUICK CHANGE TOOL POSTS

B

#1 TURNING & FACING HOLDERS

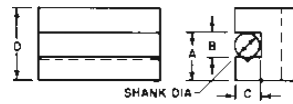
- Takes various sizes of bits
- Turning and facing tools can be locked in together
- Saves time and labor when changing operations.



Series	A	B	C	D	Tool Bit	Part Number	Price
AXA	15/16	1/2	7/16	1-1/2	3/16-1/2	ALOR-AXA-1	\$58.00
BXA	1-1/8	5/8	1/2	1-3/4	1/4-5/8	ALOR-BXA-1	\$68.00
CXA	1-7/16	3/4	5/8	2-1/8	1/2-3/4	ALOR-CXA-1	\$85.00
CA	1-11/16	1	3/4	2-1/2	1/2-1	ALOR-CA-1	\$103.00
DA	2-3/16	1-1/4	1	3-1/8	1/2-1-1/4	ALOR-DA-1	\$153.00
EA	2-11/16	1-1/2	1-1/4	4	3/4-1-1/2	ALOR-EA-1	\$240.00

#2 BORING, TURNING & FACING HOLDERS

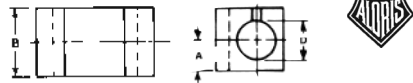
- "V" groove holds round shank boring bars and tools as well as square tool bits



Series	A	B	C	D	Tool Bit	Shank	Part Number	Price
AXA	15/16	1/2	7/16	1-1/2	3/16-1/2	7/16	ALOR-AXA-2	\$63.00
BXA	1-5/8	5/8	1/2	1-3/4	1/4-5/8	1/2	ALOR-BXA-2	\$75.00
CXA	1-7/16	3/4	5/8	2-1/8	1/2-3/4	3/4	ALOR-CXA-2	\$94.00
CA	1-11/16	1	3/4	2-1/2	1/2-1	13/16	ALOR-CA-2	\$116.00
DA	2-3/16	1-1/4	1	3-1/8	1/2-1-1/4	1	ALOR-DA-2	\$166.00
EA	2-11/16	1-1/2	1-1/4	4	3/4-1-1/2	1-1/4	ALOR-EA-2	\$270.00

#4D BORING BAR HOLDER

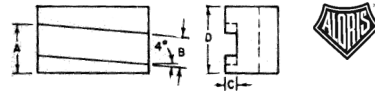
- Precision ground bore & split clamping design
- Provides excellent clamping pressure
- Optional bushings available to accommodate different tool diameters



Series	A	B	D	Part Number	Price
AXA	3/4	1-1/2	3/4	ALOR-AXA-4D	\$88.00
BXA	1	2	1	ALOR-BXA-4D	\$107.00
CXA	1	2	1	ALOR-CXA-4D	\$124.00
CA	1-3/8	2-3/4	1-1/4	ALOR-CA-4D	\$152.00
DA	1-5/8	3-1/4	1-1/2	ALOR-DA-4D	\$227.00
EA	2-1/4	4-1/2	2-1/2	ALOR-EA-4D	\$357.00

#7 UNIVERSAL PARTING BLADE HOLDER

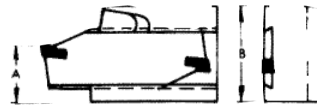
- For use with "T" type blades or bevel blades having parallel top and bottom edges
- Enables cut-off close to chuck
- Absence of vibration prevents breaking blades



Series	A	B	C	D	Blade Ht.	Part Number	Price
AXA	13/16	1/2	3/16	1-1/2	1/2	ALOR-AXA-7	\$101.60
BXA	1	11/16	3/16	1-3/4	11/16	ALOR-BXA-7	\$115.00
CXA	1-3/16	3/4	3/16	2	3/4	ALOR-CXA-7	\$128.00
CA	1-7/16	7/8	1/4	2-1/2	7/8	ALOR-CA-7	\$166.00
DA	1-3/4	1-1/8	1/4	2-3/4	1-1/8	ALOR-DA-7	\$189.00
EA	1-7/8	1-1/8	1/4	3	1-1/8	ALOR-EA-7	\$257.00

#71 CUT-OFF & GROOVING HOLDER

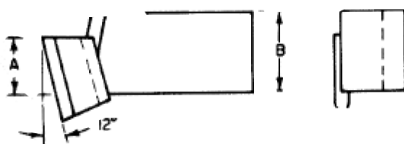
- Designed for high rigidity under heavy duty conditions
- Simple blade position adjustment
- Self-locking throwaway insert blade can be used
- Cool, chatter-free operations at high speeds



Series	A	B	USED WITH BLADE WIDTHS	Part Number	Price
AXA	31/32	1-5/8	.087 & .093X.750	ALOR-AXA-71	\$207.00
BXA	1-7/32	2	.093-.120-.187	ALOR-BXA-71	\$210.00
CXA	1-9/32	2	.120-.160-.187	ALOR-CXA-71	\$242.00
CA	1-7/16	2-1/2	.120-.187-.250	ALOR-CA-71	\$253.00
DA	1-17/32	2-5/8	.120-.187-.250	ALOR-DA-71	\$286.00
EA	2-1/16	3-3/8	3/16 OR 1/4	ALOR-EA-71	\$380.00

#8 THREADING HOLDER

This universal threading holder comes with an interchangeable high speed threading blade which has two cutting edges. You may now reverse your spindle and cut a thread without fear of hitting shoulders. Holders supplied with blade as follows: AXA-P10, BXA/CXA-P6, CA/DA/EA-P4.



Series	A	B	Used With	Part Number	Price
AXA	13/16	1-5/8	Any Threading Blade	ALOR-AXA-8	\$124.00
BXA	1	1-3/4	Any Threading Blade	ALOR-BXA-8	\$131.00
CXA	1-1/8	2	Any Threading Blade	ALOR-CXA-8	\$151.00
CA	1-1/4	2-1/4	Any Threading Blade	ALOR-CA-8	\$173.00
DA	1-1/2	2-3/4	Any Threading Blade	ALOR-DA-8	\$217.00

60° High Speed Threading Blades

Capacity	Model #	Part Number	Price
4 or more TPI	P-4	ALOR-P-4	\$52.00
6 or more TPI	P-6	ALOR-P-6	\$52.00
10 or more TPI	P-10	ALOR-P-10	\$52.00

Call Us Today For All Of Your Machine Tool Needs!

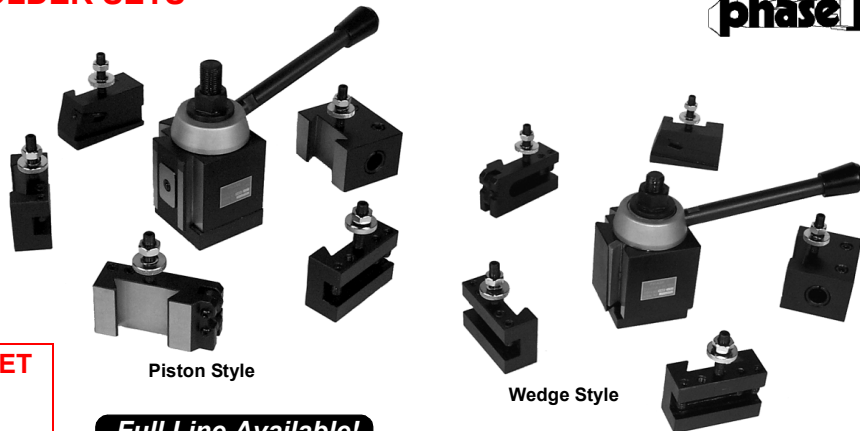
QUICK CHANGE TOOL POST/HOLDER SETS

PISTON & WEDGE STYLE

- Select either piston or wedge style
- Precision engineered to assure repetitive accuracy
- Wedge-type tool post has 0.0001" repeatability
- Piston-type tool post has 0.0002" repeatability
- Tool posts accept industry standard series toolholders within same series (ex: 100 AXA series)
- Each set consists of one toolpost and 5 holders, one of each style No. 1, No. 2, No. 4, No. 7 and No. 10

Toolholder Styles

- No. 1: Turning and facing holder
- No. 2: Boring, turning and facing holder
- No. 4: Heavy-duty boring bar holder
- No. 7: Universal parting (part-off) blade holder
- No. 10: Knurling, turning and facing holder



Piston Style

Wedge Style

Full Line Available!
Please call for more information.

Piston Sets

Series	Swing	Part Number	Set Price
100 AXA	9-12"	PH2-251-100	\$219.00
200 BXA	10-15"	PH2-251-200	\$253.00
300 CXA	13-18"	PH2-251-300	\$373.00
400 CA	14-20"	PH2-251-400	\$605.00

Wedge Sets

Series	Swing	Part Number	Set Price
100 AXA	9-12"	PH2-251-111	\$274.00
200 BXA	10-15"	PH2-251-222	\$329.00
300 CXA	13-18"	PH2-251-333	\$461.00
400 CA	14-20"	PH2-251-444	\$655.00
500 DA	17-48"	PH2-251-555	\$1,540.00

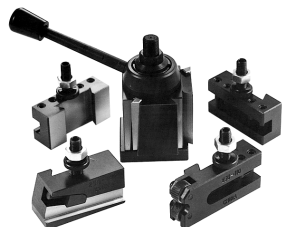
MINI QUICK-CHANGE TOOL POST SET

- Fits 7x10, 7x12 & 7x14 mini lathes
- No tools required to change tooling
- Made from aluminum



6 Piece Set Includes:

- Tool post
- Mounting hardware
- 2 turning tool holders
- Boring tool holder
- Cut-off blade holder



MINI QUICK-CHANGE SET

Part # A-3900-5350

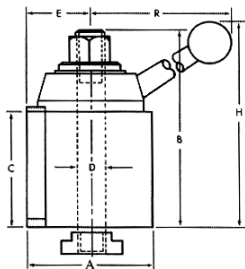
\$109.00

QUICK CHANGE TOOL POSTS

PISTON OR WEDGE TYPE

Both piston and wedge style quick change tool posts are precision engineered to assure repetitive accuracy. Advanced design provides built-in quick tool changing versatility with positive rigidity to meet the most exacting tolerances. Quickly and easily installed on an engine, bench or turret lathe for a wide range of operations, from fine, precise work to heavy duty cutting.

Piston type posts are economical, while the wedge type posts are clearly ultra-precise. Both accept the same series toolholders, and are interchangeable with Aloris, Dorian and DTM Tooling. **Please note, base must be machined to fit your compound rest.**

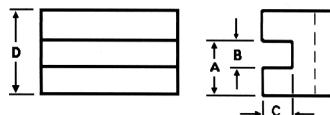


Style	Series	Swing	A	B	C	D	E	H	R	Part Number	Price Each
PISTON STYLE	100 AXA	9-12"	2-1/2"	3-7/8"	2-1/4"	9/16"	1-7/16"	4-11/16"	5-3/4"	PH2-250-100	\$116.00
	200 BXA	10-15"	3"	4-5/8"	2-3/4"	5/8"	1-5/8"	5-9/16"	7-5/16"	PH2-250-200	\$132.00
	300 CXA	13-18"	3-3/8"	5-1/8"	3"	3/4"	1-7/8"	6-1/8"	7-7/8"	PH2-250-300	\$175.00
	400 CA	14-20"	4"	6-1/4"	3-5/8"	7/8"	2-1/8"	7"	9"	PH2-250-400	\$290.00
WEDGE STYLE	100 AXA	9-12"	2-1/2"	3-7/8"	2-1/4"	9/16"	1-3/8"	4-11/16"	5-3/4"	PH2-250-111	\$153.00
	200 BXA	10-15"	3"	4-5/8"	2-3/4"	5/8"	1-9/16"	5-9/16"	7-5/16"	PH2-250-222	\$172.00
	300 CXA	13-18"	3-1/2"	5-1/8"	3"	3/4"	1-29/32"	6-1/8"	7-7/8"	PH2-250-333	\$250.00
	400 CA	14-20"	4"	6-1/4"	3-5/8"	7/8"	2-1/8"	7"	9"	PH2-250-444	\$336.00
	500 DA	17-48"	5"	7-3/8"	4-5/8"	1"	2-11/16"	-	-	PH2-250-555	\$770.00

TURNING & FACING HOLDERS

NO. 1

- Accepts various size bits
- Turning and facing tools can be locked in together
- Save time and labor when changing operations



No. 1-TURNING AND FACING HOLDERS

Series	A	B	C	D	Toolbit	Part Number	Price
100 AXA	15/16"	1/2"	7/16"	1-1/2"	3/16-1/2"	PH2-250-101	\$28.00
200 BXA	1-1/8"	5/8"	1/2"	1-3/4"	1/4-5/8"	PH2-250-201	\$30.00
300 CXA	1-7/16"	3/4"	5/8"	2-1/8"	1/4-3/4"	PH2-250-301	\$41.00
400 CA	1-11/16"	1"	3/4"	2-1/2"	1/2-1"	PH2-250-401	\$51.00
500 DA	3-3/16"	1-1/4"	1"	3-1/8"	3/4-1-1/4"	PH2-250-501	\$120.00



Call Us Or Visit Our Website For Our Complete Selection!

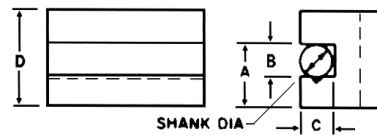
QUICK-CHANGE TOOL POSTS & HOLDERS

BORING, TURNING & FACING HOLDERS

NO. 2



- V-groove holds round shank boring bars and tools as well as square toolbits
- Boring bars sold separately



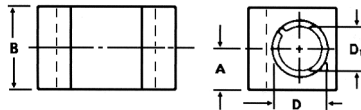
Series	A	B	C	D	Toolbit	Shank	Part Number	Price
100 AXA	15/16"	1/2"	7/16"	1-1/2"	3/16-1/2"	7/16"	PH2-250-102	\$29.00
200 BXA	1-1/8"	5/8"	1/2"	1-3/4"	1/4-5/8"	1/2"	PH2-250-202	\$33.00
300 CXA	1-7/16"	3/4"	5/8"	2-1/8"	1/2-3/4"	3/4"	PH2-250-302	\$43.00
400 CA	1-11/16"	1"	3/4"	2-1/2"	1/2-1"	13/16"	PH2-250-402	\$54.00
500 DA	2-3/16"	1-1/4"	1"	3-1/8"	3/4-1-1/4"	1-1/8"	PH2-250-502	\$125.00

HEAVY DUTY BORING BAR HOLDERS

NO. 4



- Equipped with a split bushing to accommodate a boring bar of a smaller diameter
- Grips with extreme rigidity
- Cuts smoothly without chatter
- Boring bars sold separately



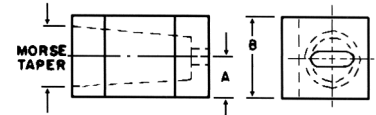
Series	A	B	D	D1	Part Number	Price
100 AXA	3/4"	1-1/2"	3/4"	5/8"	PH2-250-104	\$43.00
200 BXA	7/8"	1-3/4"	1"	3/4"	PH2-250-204	\$51.00
300 CXA	1"	2"	1"	3/4"	PH2-250-304	\$61.00
400 CA	1-1/4"	2-1/2"	1-1/4"	1"	PH2-250-404	\$75.00
500 DA	1-9/16"	3-1/8"	1-1/2"	1-1/4"	PH2-250-504	\$154.00

MORSE TAPER HOLDERS

NO. 5



- Drills with carriage by using power feed instead of tailstock
- Easily centered
- For MT2, MT3 & MT 4 drills (sold separately)



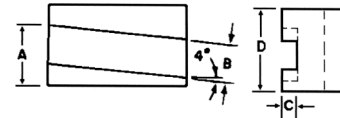
Series	A	B	Hole Size	Part Number	Price
100 AXA	3/4"	1-1/2"	2MT	PH2-250-105	\$44.00
200 BXA	7/8"	1-3/4"	2MT	PH2-250-205	\$47.00
300 CXA	1"	2"	3MT	PH2-250-305	\$60.00
400 CA	1-1/4"	2-1/2"	3MT	PH2-250-405	\$74.00
500 DA	1-9/16"	3-1/8"	4MT	PH2-250-505	\$115.00

UNIVERSAL PARTING BLADE HOLDERS

NO. 7



- For bevel as well as T-cut blades
- Enables you to cut-off close to chuck
- Absence of vibration prevents breaking blades



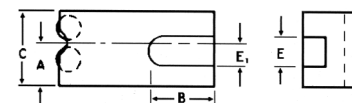
Series	A	B	C	D	Toolbit	Shank	Part Number	Price
100 AXA	15/16"	1/2"	7/16"	1-1/2"	3/16-1/2"	7/16"	PH2-250-107	\$44.00
200 BXA	1-1/8"	5/8"	1/2"	1-3/4"	1/4-5/8"	1/2"	PH2-250-207	\$46.00
300 CXA	1-7/16"	3/4"	5/8"	2-1/8"	1/2-3/4"	3/4"	PH2-250-307	\$57.00
400 CA	1-11/16"	1"	3/4"	2-1/2"	1/2-1"	13-16"	PH2-250-407	\$75.00
500 DA	2-3/16"	1-1/4"	1"	3-1/8"	3/4-1-1/4"	1-1/8"	PH2-250-507	\$136.00

KNURLING, TURNING AND FACING HOLDERS

NO. 10



- For turning and facing as well as knurling
- Supplied with a set of high-speed, precision ground, lapped medium diamond knurls
- Knurl dimensions: 3/4" x 3/8" x 1/4"
- Uses American standard knurls



Series	A	B	C	E	E1	Toolbit	Part Number	Price
100 AXA	7/8"	2-1/2"	1-9/16"	1/2"	13/32"	3/16-1/2"	PH2-250-110	\$53.00
200 BXA	1"	2-5/8"	1-3/4"	5/8"	1/2"	1/4-5/8"	PH2-250-210	\$60.00
300 CXA	1-3/16"	3-1/8"	2"	3/4"	1/2"	1/2-3/4"	PH2-250-310	\$69.00
400 CA	1-7/16"	3-3/4"	2-1/2"	1"	3/4"	1/2-1"	PH2-250-410	\$78.00
500 DA	1-7/8"	4-1/2"	3-1/8"	1-1/4"	1"	1/2-1-1/4"	PH2-250-510	\$165.00

Call Us Today For All Of Your Machine Tool Needs!