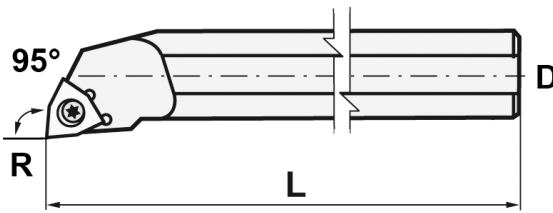


SWLOR_ BORING BARS

SWLOR_ BORING BARS

Using "WCMT" Inserts

- Uses WCMT type inserts
- Shanks have locating flats for easy set-up
- Available in steel, heavy metal or carbide shanks
- See following page for inserts
- **Made in the USA**

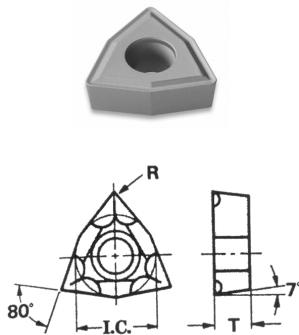


Using "WCMT" Inserts



Insert	Reference Number	Shank "D"	Steel Shank-4xD			Heavy Metal-6xD			Carbide Shank-8xD			Screw \$1.00	Torx Wrench
			Min Bore	L	Part Number	Min Bore	L	Part Number	Min Bore	L	Part Number		
WCMT -0201	_SWLOR-055	0.188	0.228	5.0	BBM-1000R \$55.00	0.228	4.0	BBM-3000R \$110.00	0.228	4.0	BBM-5000R \$129.00	SC-22	TX-206 \$6.50
	_SWLOR-065	0.250	0.312	5.0	BBM-1010R-E \$69.00	0.300	4.0	BBM-3010R \$120.00	0.300	4.0	BBM-5010R \$151.00	SC-21	
	_SWL0502RS	0.312	0.228	5.0	BBM-1020R-E \$69.00	0.362	4.0	BBM-3020R \$133.00	0.362	4.0	BBM-5020R \$162.00	SC-22	
WCMT -S032	_SWLOR-066	0.312	0.375	5.0	BBM-1030R-E \$69.00	0.362	4.0	BBM-3030R \$133.00	0.375	5.0	BBM-5030R \$162.00	SC-21	
WCMT -0402	_SWL0504R	0.312	0.406	5.0	BBM-1040R-E \$69.00	0.362	4.0	BBM-3040R \$133.00	0.406	5.0	BBM-5040R \$162.00	SC-23	TX-208 \$6.50
	_SWLOR-062	0.375	0.500	5.0	BBM-1050R-E \$69.00	0.425	4.0	BBM-3050R \$146.00	0.500	5.0	BBM-5050R \$166.00		
	_SWLOR-070	0.375	0.438	5.0	BBM-1060R-E \$69.00	0.425	4.0	-	0.438	5.0	BBM-5060R \$166.00		
	_SWLOR-082	0.500	0.625	5.0	BBM-1070R-E \$76.00	0.550	6.0	BBM-3070R \$259.00	0.625	6.0	BBM-5070R \$220.00		
WCMT -06T3	_SWLOR-103	0.625	0.750	7.0	BBM-1080R-E \$77.00	0.675	6.0	BBM-3080R \$326.00	0.750	6.0	BBM-5080R \$333.00	SC-24	TX-215 \$8.00
	_SWLOR-123	0.750	1.000	7.0	BBM-1090R-E \$81.00	0.800	8.0	BBM-3090R \$573.00	1.000	9.0	BBM-5090R \$507.00		

WCMT/WCGT INSERTS



GRADE US-735
for continuous & interrupted cutting of steels & stainless steels.

TL120 TiAlN Coated
For high temp alloys and stainless steel.

*Mitsubishi is a trademark of Mitsubishi Materials U.S.A. Corporation

Bars Using	IC	T	R	Reference Number	Grade	Part Number	Price Each	Brand
WCMT/WCGT -0201	5/32 .156	1/16	.008 (1/128)	WCMT020102	US-735	MB-501	\$9.95	Mitsubishi
				WCGT020102	TL120	US-901	\$10.00	USST
			.015 (1/64)	WCMT020104	US-735	MB-511	\$9.95	Mitsubishi
				WCGT020104	TL120	US-902	\$10.00	USST
WCMT/WCGT -S302	3/16 .187	3/32	.008 (1/128)	WCMTS30202	US-735	MB-521	\$9.95	Mitsubishi
				WCGTS30202	TL120	US-903	\$10.00	USST
			.015 (1/64)	WCMTS30204	US-735	MB-531	\$9.95	Mitsubishi
				WCGTS30204	TL120	US-904	\$10.00	USST
WCMT/WCGT -0402	1/4 .250	3/32	.008 (1/128)	WCMT040202	US-735	MB-541	\$9.95	Mitsubishi
				WCGT040202	TL120	US-905	\$10.00	USST
			.015 (1/64)	WCMT040204	US-735	MB-551	\$9.95	Mitsubishi
				WCGT040204	TL120	US-906	\$10.00	USST
WCMT/WCGT -06T3	3/8 .375	5/32	.008 (1/32)	WCGT06T302	TL120	US-909	\$15.00	USST
				WCMT06T304	US-735	MB-561	\$11.25	Mitsubishi
			.015 (1/64)	WCGT06T304	TL120	US-907	\$15.00	USST
				WCMT06T308	US-735	MB-571	\$11.25	Mitsubishi
WCGT06T308	TL120	US-908	\$13.00	USST				

VENTURE II® SAFETY GLASSES



- 9.75 base curved lens provides full side protection without distracting seams or traditional type side shields
- Nose buds secure the glass and prevent slipping while providing a pillow soft fit
- Temples adjust to four different lengths
- Lenses are coated for superior scratch resistance
- Lenses provide 99% protection against harmful UV rays
- Exceeds ANSI Z87.1-2003 standards
- CE EN166 and CAN/CSA Z94.3-07 certified



Frame Color	Lens Color	Part Number	Price Each
Black	Clear	PYR-SB1810S	\$4.39
	Gray	PYR-SB1820S	\$4.99
	Blue	PYR-SB1860S	\$4.99
	Amber	PYR-SB1830S	\$4.99

Call Us Today For All Of Your Machine Tool Needs!