

## PRO VISE STOPS

- Low profile design stays below the top surface of vise jaws for cutter clearance
- Versatile design allows the 1/4" hardened stop rod to be quickly and accurately positioned
- Stop rod stays parallel to milling machine table so workpiece will contact rod face squarely for increased accuracy
- Lever arm can be rotated out of the way for cutter clearance and accurately relocated for repeat setup
- Two sets of mounting holes for added versatility
- Mounting hardware included
- Locate long stock with the included stop rod collar
- Large 1/2"-13" bolt used to rigidly attach lever arm
- Utilizes non-marring 1/4"-20 set screws
- Body made from red anodized 6061-T6 aluminum



**EDGE TECHNOLOGY**



**Single Side**  
Part # EDGE-03000  
**\$49.99 ea**



**Double Side**  
Part # EDGE-18000  
**\$74.99 ea**

LATHE CHUCKS  
LIVE CENTERS

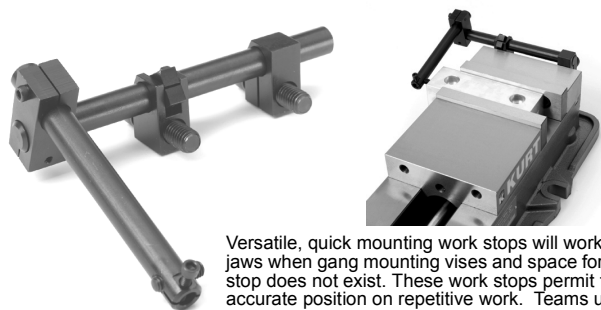
WISE JAWS  
WISE ACCESSORIES

## ANGLOCK® VISE WORK STOPS



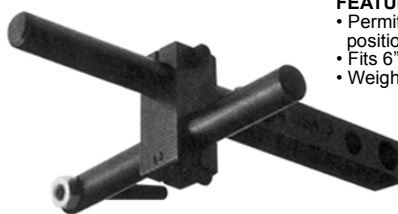
**WISE WORK STOP**  
Fits 6" Anglock type vises

**BEST VALUE**



Versatile, quick mounting work stops will work above jaws when gang mounting vises and space for a work-stop does not exist. These work stops permit fast, accurate position on repetitive work. Teams up with your precision vise for accurate parts production.

Vise Model	Part Number	Price Each
3-4" Vises	KURT-D30-45	\$110.00
5-6" Vises	KURT-360PWS	\$138.00
8" Vises	KURT-D80WS	\$143.00



For 6" Vises

- FEATURES:**
- Permits Fast, completely accurate positioning of repetitive work.
  - Fits 6" vises
  - Weight: 0.18 lbs.

Part Number	Price	Code
MVS-600	\$22.95	F

STRAIGHT SHANK  
COLLET HOLDERS

TAP HOLDERS  
DRILL CHUCKS

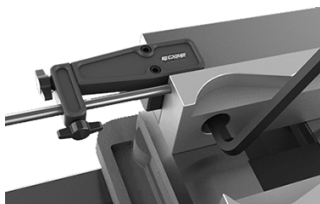
## WISE JAW LOCATOR

- Two powerful magnets hold the unit in place
- Adjustable 1/4" stop rod allows compatibility with different width soft jaws
- Fits all milling machine vise widths
- Rotate stop rod holder arm for use with double side vises
- High strength aluminum body
- Durable red anodized finish

**EDGE TECHNOLOGY**



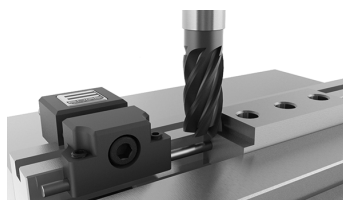
**Vise Jaw Locator**  
Part # EDGE-47000  
**\$24.99 ea**



## WISE JAW STOP

**EDGE TECHNOLOGY**

- Stop pin is positioned completely below the top surface of vise jaw to allow for cutter clearance
- 1/8" x 2" hardened stop pin, adjustable
- Fits all milling machine vises with 1/2" to 7/8" thick jaws and 1/8" minimum protrusion
- 1-1/8" wide body with 2 hardened steel guide pins
- Body made from red anodized aluminum



**Vise Jaw Stop**  
Part # EDGE-14000  
**\$19.99 ea**

CARBIDE INSERTS  
THREADING/GROOVING

CUTTING TOOLS  
MACHINERY

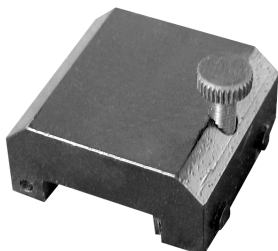
## WISE WORK STOP

Fits Anglock type vises

**BEST VALUE**

- Single thumb screw tightens clamp to vise jaw.
- Two ground pins on both sides of clamp.
- Easily mounts to the top of most vise jaws.
- 1 piece clamping screws.

F

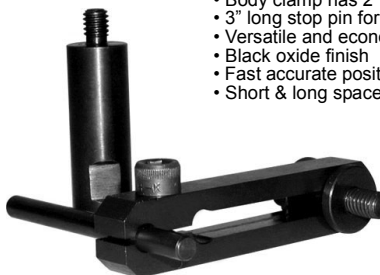


Capacity	Part Number	Price
3/4"	VWS-750	\$4.95
7/8"	VWS-875	\$7.95

## ADJUSTABLE WORKSTOP

**KURT**

- Body clamp has 2" adjustment
- 3" long stop pin for fast set-ups
- Versatile and economical!
- Black oxide finish
- Fast accurate positioning of parts
- Short & long spacers available



Description	Part Number	Price Each
Workstop	KURT-6AWS	\$66.00

PRECISION TOOLS  
DEBURRING

COOLANT/FLUIDS  
TOOL STORAGE

Call Us Or Visit Our Website For Our Complete Selection!

# WISE STOPS & ACCESSORIES

## PRO MILL STOPS

The Pro Mill Stop can be mounted on any available T-slot anywhere along the milling machine table allowing it to accurately locate a workpiece for any type of setup. It is designed to keep the stop rod square to the work piece throughout the entire range of motion. This configuration provides a more consistent locating surface for increase part accuracy. The base of the unit is also keyed to the T-slot of table for increased consistency. After locating the workpiece the arm of the Pro Mill Stop can be rotated out of the way for total cutter clearance. The arm can then be accurately repositioned for repeat setup.



- 1/4" hardened stop rod
- 5/8" T-slot
- Stop rod stays parallel to milling machine for increased accuracy
- Lever arm can be rotated out of the way for cutter clearance
- Base of unit is keyed to T-slot in table
- 1/2"-13 bolt attached lever arm to base
- T-nut included

**Mill Stop-5/8" Slot**  
Part # EDGE-16000  
**\$49.99 ea**



## ULTIMATE 5-AXIS WORK STOP TOOL

Single mount, swivel-action work stop tool for CNC machine centers, milling machines and drill presses.

- Saves time and increases efficiency.
- Fast set-up time.
- Quick and accurate repetitive positioning.
- Locks in rigid.
- Quick/universal machine installation.
- Versatile job applications.



Pivoting/Positioning

Size	Color	Part Number	Price
6"	Purple	A-1-P6-5A	\$92.00
8"	Red	A-1-R8-5A	\$169.00
10"	Yellow	A-1-Y10-5A	\$199.00

Rigid Locking System

## ADJUSTABLE UNIVERSAL WORKSTOP

**BEST VALUE**



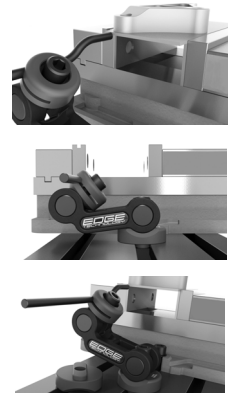
- Serves as a rigid stop for milling setups
- For use with vises, angle plates and jigs
- Usable as a versatile holder, as well as a workstop

**Specifications:**  
Column: 3/4" x 6-1/4"  
Base: 3/4" x 2" x 4-1/2"  
Rod: 3/8" x 10"  
Weight: 3.4 lbs

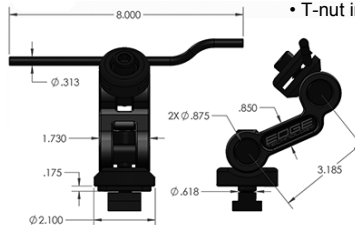


Description	Part Number	Price
Universal Workstop	AUS-600	\$14.95

## MULTI-AXIS WORKSTOP



- Unique design stays completely below the top surface of vise jaws for cutter clearance
- Stop rod stays parallel to the milling machine table for increased accuracy
- Versatile design allows 5/16" hardened stop rod to be quickly and accurately positioned
- Large 1/2"-13" socket head cap screws rigidly clamp the unit in position after adjustments are made
- Base of unit is keyed to T-slot in table
- T-nut included

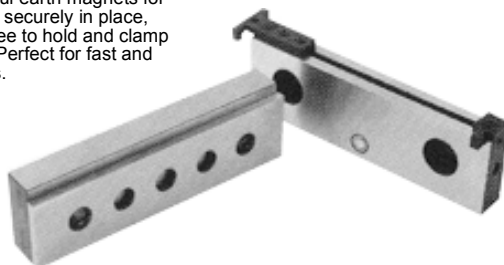


**MULTI-AXIS STOP**  
Part # EDGE-48000  
**\$59.99 ea**

## MAGNETIC JAW PLATES

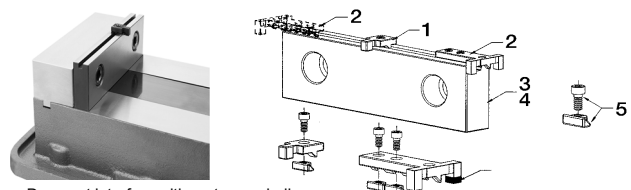


Features powerful earth magnets for holding parallels securely in place, leaving hands free to hold and clamp the workpiece. Perfect for fast and accurate set ups.



Description	Length	Width	Height	Part Number	Price
6" Magnetic Jaw Plate	5.969	.725	1.735	KURT-D60-7-MAG	\$46.00
6" for Groove Lock Workstops	5.969	.725	1.735	KURT-D60-315-MA	\$49.00

## GROOVE LOCK WORKSTOP



- Does not interfere with parts or spindle
- Single bolt design used for tightening workstop

See Fig.	Description	Part Number	Price Each
1	Workstop assembly suitable for 2-6" jaw plates	KURT-WSRL46	\$16.00
2	Extended length workstop assembly suitable to use with 4-6" jaw on outside.	KURT-WSRLE46	\$24.00
3	6" GrooveLock Jawplate (not reversible)	KURT-D60-315	\$38.00
4	4" GrooveLock Jawplate (not reversible)	KURT-D40-315	\$39.00
5	Replacement Clamp Assembly	KURT-WSRL4686SA	\$10.00

Call Us Today For All Of Your Machine Tool Needs!

# WISE ACCESSORIES

B

## PARALLEL KEEPER



### PARALLEL KEEPER

Part # SL-EZKEEP

**\$24.95 ea**

- Reduce set-up time
- Keeps parallels in place
- Magnetic base- tool can be stored on side of vise!
- Compact, narrow & low profile
- Automatically self-adjusts

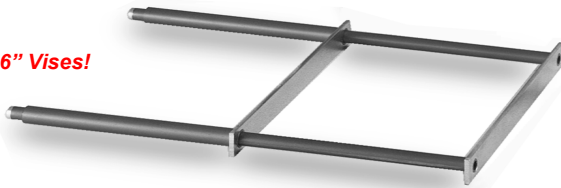
**D**

## PARALLEL KEEPER



Place your parallels in the vise against the jaws. Take the Parallel Keeper, squeeze it together and place it inside the parallels. Release the Parallel Keeper, it will push against the parallels, holding them against the jaws of the vise! Opens to 6 inches and saves part change time!

*Fits 6" Vises!*



Description	Part Number	Price
Parallel Keeper	KURT-KPS-6000	<b>\$62.00</b>

## PARALLEL SETS

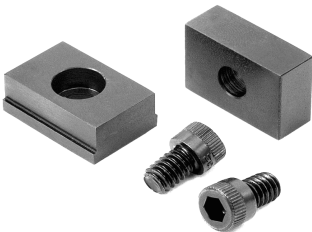


- Made from high quality tool steel
- Stress relieved against distortion
- Precision ground and hardened
- 6" Length
- **1/8" Heights:** 1/2", 5/8", 3/4", 7/8", 1", 1-1/8", 1-1/4", 1-3/8", 1-1/2" and 1-5/8"
- **1/4" Heights:** 3/4", 7/8", 1", 1-1/8", 1-1/4", 1-3/8", 1-1/2", 1-5/8" and 1-3/4"
- Complete with durable fitted plastic case



Description	Length	Part Number	Price
10 Pair Set	1/8" W X 6" L	A-3900-3010	<b>\$54.00</b>
9 Pair Set	1/4" W X 6" L	A-3900-3009	<b>\$90.00</b>

## HARDENED VISE KEYS



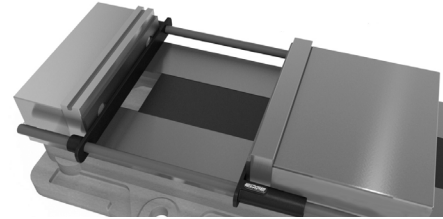
Vise Size	Key Size	Part Number
5-6"	11/16x5/8"	KURT-D50-33A
	11/16x13/16"	KURT-D50-33B
	11/16x3/4"	KURT-D50-33C
	11/16x9/16"	KURT-D50-33D
	11/16x1/2"	KURT-D50-33E
<b>Square Keys (set of 2)</b>		
5-6"	11/16x11/16	KURT-D50-50

**\$28.50 per pair**

## PARALLEL SEPARATOR



- Strong compression springs are used to expand the unit
- Sized to fit a 6" vise
- Durable metal construction
- Can be disassembled for cleaning



The Parallel Separator is designed to firmly hold the parallel bars against the vise jaws during machining operations. This prevents chips from being lodged between the parallels and the bed of the vise and eliminates the need to clean the bars every time the workpiece is removed from the vise.

### PARALLEL SEPARATOR

Part # EDGE-49000

**\$49.99 ea**

## MAGNETIC JAW PLATE AND PARALLEL SET



*Fits all Kurt 6 inch vises!*

### 11 Piece Set Includes:

- 2 ea.- 3/16" x 1" x 6" ground steel parallels.
- 2 ea.- 3/16" x 1 1/4" x 6" ground steel parallels.
- 2 ea.- 3/16" x 1 3/4" x 6" ground steel parallels.
- 1 ea.- D60-7-MAG hardened jaw plate with earth magnet.
- 1 ea.- D60-315-MAG hardened Groove Lock jaw plate with earth magnet.
- 1 ea.- WSR46 Kurt Groove Lock Workstop.
- 1 ea.- WSR46 Kurt Groove Lock extended workstop.
- 1 ea.- Wooden storage box.



Description	Part Number	Price
Magnetic Jaw Plate/Parallel Set	KURT-6PJS	<b>\$131.00</b>

## HEX EXTENSIONS



Hex Extensions are useful when the vises are mounted on large machines where extending the hex will allow better access. Hex extensions will also allow a 6" handle to be used on a 4" or 8" vise.

Vise Size	Part Number	Price Each
4" to 6"	KURT-HEX4A6	<b>\$129.00</b>
4" to 4"	KURT-HEX4	<b>\$20.00</b>
6" to 6"	KURT-HEX6	<b>\$48.00</b>
8" to 6"	KURT-HEX8A6	<b>\$88.00</b>

Call Us Or Visit Our Website For Our Complete Selection!

**2019-20 MASTER CATALOG**

**135**

LATHE CHUCKS  
LIVE CENTERS

WISE JAWS  
WISE ACCESSORIES

STRAIGHT SHANK  
COLLET HOLDERS

TAP HOLDERS  
DRILL CHUCKS

CARBIDE INSERTS  
THREADING/GROOVING

CUTTING TOOLS  
MACHINERY

PRECISION TOOLS  
DEBURRING

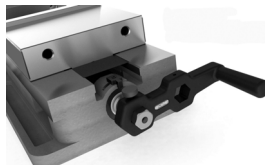
COOLANT/FLUIDS  
TOOL STORAGE

# WISE HANDLES & ACCESSORIES

## 2 POSITION VISE HANDLE



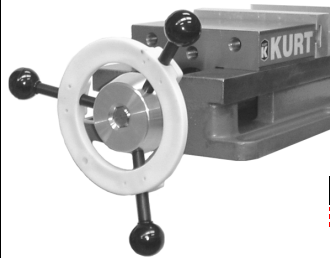
The 2 Position Vise Handle is a great alternative to the standard handle that comes with most vises. It is smaller, faster and much more ergonomic. Provides the correct amount of leverage for clamping most work pieces. It also has a thumb knob allowing the handle to stay locked to the vise during machining.



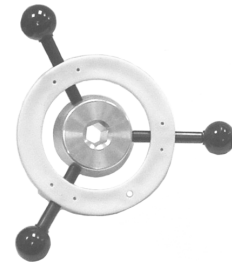
- Allows vise to be opened and closed rapidly
- The outer position provides correct amount of leverage for clamping most work pieces
- Durable aluminum construction
- Thumb knob allows the unit to stay locked to the vise during machining operations.
- Strong Neodymium magnet on backside of body allows unit to hang from any metal surface

**2 POSITION VISE HANDLE**  
Part # EDGE-50000  
**\$19.99 ea**

## SPEED GUARD HANDLE PROTECTOR



Prolong the life of your speed handle! The Speed Guard evenly distributes torque among the three arms of your handle, reinforcing your handle for added strength and support.



### No More Broken Handles!

- Prolongs handle life-evenly distributes torque
- For machine vise and drill press handles or any 3 prong handle that needs support!
- Quick and easy to install
- High visibility safety yellow
- Includes all hardware

Description	Part Number	Price
Speed Guard	PMC-GUARD	\$5.99
Speed Guard w/ Handle	PMC-SPEED-KIT	\$36.56

D

## KURT SPEED HANDLE



Spend less time clamping and get a handle on your next job. The Kurt Speed Handles fit the 4" and 6" AngLock vises and opens completely in seconds. It doesn't interfere with the milling machine, giving you rapid part loading and unloading.



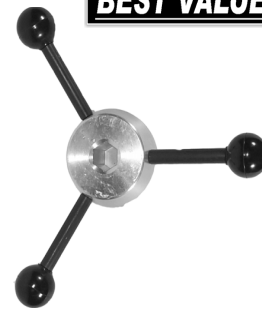
Vise Size	Part Number	Price Each
4"	KURT-D40SH	\$95.00
6"	KURT-D60SH	\$132.00

## SPEED HANDLE



- Fits 6" Kurt Anglock Vises
- Vises can be completely opened in a few seconds
- Save time & increase production
- 3/4" Hex Hole

**BEST VALUE**



Hex Size	Part Number	Price Each
3/4"	US-SPEED-6	\$31.05

## TORQUE HANDLE



The torque handle has all the benefits of the Speed Handle, yet provides calibration guides for your torquing requirements. Used on 6" vises like the Speed Handle, it doesn't interfere with your milling machines and is made of durable steel, not aluminum, so your hex nut won't strip.



Description	Part Number	Price Each
Torque Handle	KURT-TH-6	\$239.00

## ARMLOCK® HANDLE



*Fits 6" Vises!*

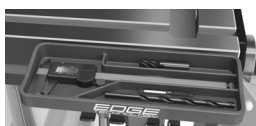
This adjustable lever length handle is designed to allow spinning of the vise screw with the lever in the central position for fast jaw movement and light work clamping. Comfortable, higher torque clamping is possible when lever is in #2 position. By adding an adapter the handle can be used on 4" or 8" vises.

Description	Part Number	Price Each
6" Armlock Handle	KURT-AL6	\$79.00

## MILL ORGANIZER TRAY



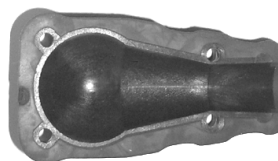
- Designed to fit standard 6" calipers
- Multiple compartments segregate endmills and prevent tool damage
- Mounts w/ T-slot on table front (included)
- Compatible with Bridgeport brand power feed connecting rod
- Mill Caddy can be mounted below to improve organization even further
- Made from durable fiberglass reinforced composite



**Mill Organizer Tray**  
Part # EDGE-29000  
**\$19.99 ea**

## CARPAL CUSHION™

Machine Vise Handle Grip



- Quickly mounts on machine vise handle-tapered and ball end
- Cushions impact between hand and handle, reducing the risk of hand injury
- Includes mounting hardware

Description	Part Number	Price Each
Machine Vise Handle Grip	GM-CC-2000	\$19.95

C

Call Us Today For All Of Your Machine Tool Needs!