

SPINDLE ADAPTER SELECTION GUIDE

DETERMINING SPINDLE TYPE & SIZE

Spindle Type A1 and A2

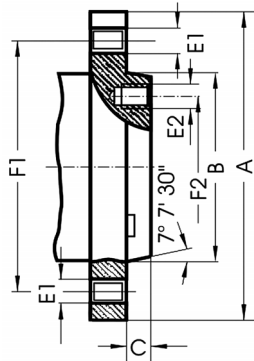
Chucks with A2 mounts can be installed on either A1 or A2 spindle nose.



Type A1 has tapped holes on both inner and outer bolt circles

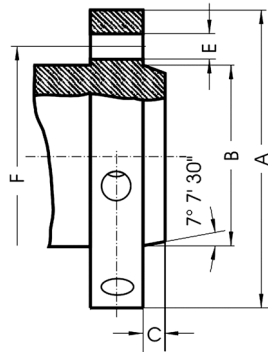


Type A2 **DOES NOT** have tapped holes on inner circle



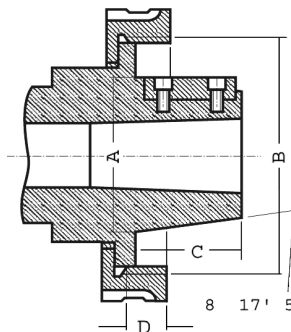
Spindle Nose	F1	F2	B	Cmax	ThreadE1=E2UNC-3B
A-4	3.2500	-	2.5005+.0005	.4375	7/16-14
A-5	4.1250	2.4374	3.2505+.0005	.5625	7/16-14
A-6	5.2500	3.2500	4.1880+.0005	.6250	1/2-13
A-8	6.7500	4.37500	5.50075+.0005	.6875	5/8-11
A-11	9.2500	6.5000	7.75075+.0005	.7500	3/4-10
A-15	13.0000	9.7500	11.251+.001	.8125	7/8-9
A-20	18.2500	14.5000	16.251+.001	.8750	1-8
A-28	25.5000	20.8750	23.001+.001	1.000	1 1/4-7

Camlock Spindle Type D1



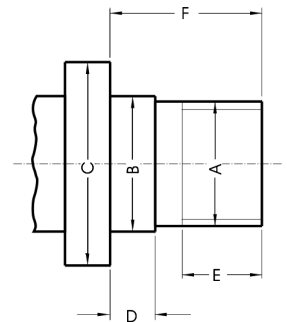
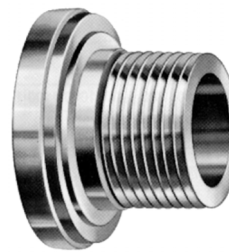
Spindle Nose	A	F	B	Cmax	E	Number of Holes	Camlock Stud Dia
D1-3	3.622	2.7820	2.1250+.00025	.4375	.5937	3	9/16
D1-4	4.606	3.2500	2.5005+.0005	.4375	.6562		5/8
D1-5	5.748	4.1250	3.2505+.0005	.5000	.8750	6	3/4
D1-6	7.126	5.2500	4.1880+.0005	.5625	1.000		7/8
D1-8	8.858	6.7500	5.50075+.0005	.6250	1.125		1
D1-11	11.732	9.2520	7.75075+.0005	.6875	1.250		13/16
D1-15	15.866	13.000	11.251+.001	.7500	1.375	13/8	

Spindle Type L Long Taper Key Drive



Spindle Nose	ThreadB	C	Key	A
L00	33/4"-6"	2	3/8x3/8x11/2	2.75
L0	4 1/2"-6"	23/8	3/8x3/8x13/4	3.250
L1	6"-6"	27/8	5/8x5/8x23/8	4.125
L2	7 3/4"-5"	33/8	3/4x3/4x27/8	5.250
L3	10 3/8"-4"	37/8	1x1x31/4	6.500

Threaded Spindle



Spindle Nose A	B	F	D	E
1"-10" UNS-2B	1.015	1.500	.4375	1.000
1-1/2"-8" UN-2B	1.515	1.500	.4375	1.000
2-3/16"-10" UN-2B	2.2025	1.750	.5625	1.125
2-1/4"-8" UN-2B	2.260	1.750	.5625	1.125
2-3/16"-6" UN-2B	2.2025	1.750	.5625	1.125
2-3/4"-8" UN-2B	2.760	2.0625	.6875	1.3125



Images and diagrams provided by Toolmex Corporation. Toolmex, Bison, Bison-bial and TMX are all registered trademarks of Toolmex Corporation.



Call Us Today For All Of Your Machine Tool Needs!

3, 4 & 6 JAW SET-TRU SCROLL CHUCKS

With Fine Adjustment, 0.0004" T.I.R.
Forged Steel Body, Two-Piece Top Reversible Jaws



SET-TRU Scroll Chucks can be used for all machining operations where universal chucks are used, along with applications where universal scroll chucks require tighter tolerances. Outstanding accuracy, versatility and long life makes Bison SET-TRU chucks invaluable in the workshop and indispensable in the toolroom.

SET-TRU Chuck Features and Benefits:

- Fine adjustment, 3 pinion design
- Forged steel body
- 4 micro adjustment screws provide .0004" T.I.R. repeatability
- Two piece top and master jaws are American Standard tongue and groove
- Scrolls are forged and fully hardened, thread flanks ground on both sides, then precisely balanced for longer life and higher accuracy
- Each scroll is precisely balanced
- Jaw teeth and guides on both sides are fully hardened and ground.
- Each chuck is balanced within fine limits



3 Jaw Set-Tru Chucks					4 Jaw Set-Tru Chucks			6 Jaw Set-Tru Chucks		
Chuck Size	Thru Hole	Max RPM	Part Number	Price	Max RPM	Part Number	Price	Max RPM	Part Number	Price
5"	1.378"	3800	BI-7866-0500	\$840.60	-	-	-	3000	BI-7868-0500	\$1,133.10
6"	1.654"	3500	BI-7866-0600	\$881.10	2500	BI-7847-0600	\$1,551.60	2500	BI-7868-0600	\$1,313.10
8"	2.165"	3100	BI-7866-0800	\$1,094.40	2200	BI-7847-0800	\$1,778.40	2200	BI-7868-0800	\$1,677.60
10"	2.992"	2700	BI-7866-1000	\$1,419.30	1900	BI-7847-1000	\$2,357.10	1900	BI-7868-1000	\$2,027.70
12"	4.055"	2200	BI-7866-1200	\$2,053.80	1500	BI-7847-1200	\$2,927.70	1500	BI-7868-1200	\$2,940.30
15"	5.354"	1800	BI-7866-1600	\$3,564.00	-	-	-	1300	BI-7868-1600	\$5,274.00

BACKPLATES FOR SET-TRU® CHUCKS

- Fully machined steel backplates for Set-Tru® Chucks
- Threaded backplates also available



Fully Machined Type A

Chuck Size	Spindle	Part Number	Price
5"	A4	BI-7874-054	\$217.80
	A5	BI-7874-055	\$217.80
	A6	BI-7874-056	\$217.80
6"	A5	BI-7874-065	\$237.60
	A6	BI-7874-066	\$243.90
8"	A5	BI-7874-085	\$256.50
	A6	BI-7874-086	\$266.40
10"	A5	BI-7874-105	\$316.80
	A6	BI-7874-106	\$316.80
	A8	BI-7874-108	\$325.80
12"	A6	BI-7874-126	\$490.50
	A8	BI-7874-128	\$501.30
	A11	BI-7874-129	\$514.80
15"	A6	BI-7874-166	\$760.50
	A8	BI-7874-168	\$760.50
	A11	BI-7874-169	\$760.50

Fully Machined Type D

Chuck Size	Spindle	Part Number	Price
5"	D1-3	BI-7875-053	\$305.10
	D1-4	BI-7875-054	\$327.60
	D1-5	BI-7875-055	\$352.80
6"	D1-6	BI-7875-056	\$359.10
	D1-4	BI-7875-064	\$393.30
	D1-5	BI-7875-065	\$393.30
8"	D1-6	BI-7875-066	\$394.20
	D1-4	BI-7875-084	\$412.20
	D1-5	BI-7875-085	\$423.90
10"	D1-6	BI-7875-086	\$415.80
	D1-8	BI-7875-088	\$499.50
	D1-5	BI-7875-105	\$580.50
12"	D1-6	BI-7875-106	\$604.80
	D1-8	BI-7875-108	\$622.80
	D1-6	BI-7875-126	\$824.40
15"	D1-8	BI-7875-128	\$831.60
	D1-11	BI-7875-129	\$831.60
	D1-8	BI-7875-168	\$1,106.10
D1-11	BI-7875-169	\$1,106.10	

Fully Machined Type L

Chuck Size	Taper	Part Number	Price
5"	L00	BI-7879-9051	\$227.70
	L0	BI-7879-9062	\$246.60
6"	L00	BI-7879-9081	\$255.60
	L1	BI-7879-9082	\$256.50
8"	L0	BI-7879-9083	\$257.40
	L1	BI-7879-9101	\$324.90
10"	L0	BI-7879-9102	\$324.90
	L1	BI-7879-9103	\$324.90
12"	L0	BI-7879-9122	\$534.60
	L1	BI-7879-9123	\$534.60
15"	L1	BI-7879-9163	\$977.40
	L2	BI-7879-9164	\$1,033.20
L3	BI-7879-9165	\$1,056.60	

Type A



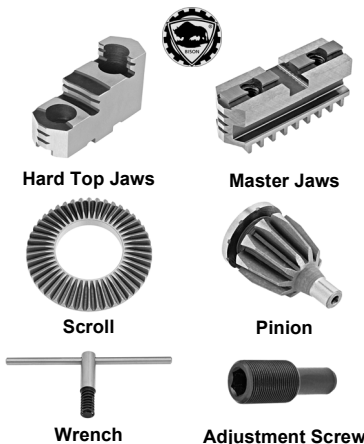
Type D



Type L



REPLACEMENT PARTS FOR SET-TRU® CHUCKS



Chuck Size	Hard Top Jaw Set		Master Jaw Set	
	Part Number	Price	Part Number	Price
3 Jaw Chucks				
5"	TG-50HJ2-BI	\$188.10	BI-7885-305	\$152.10
6"	TG-60HJ2-BI	\$230.40	BI-7885-306	\$157.50
8"	TG-80HJ2-BI	\$232.20	BI-7885-308	\$172.80
10"	TG-100HJ2-BI	\$271.80	BI-7885-310	\$221.40
12"	TG-120HJ2-BI	\$334.80	BI-7885-312	\$306.90
15"	TG-150HJ2-BI	\$456.30	BI-7885-316	\$405.00

Chuck Size	Scroll		Pinion	
	Part Number	Price	Part Number	Price
5"	BI-7887-505	\$194.40	BI-7886-505	\$42.30
6"	BI-7887-506	\$233.10	BI-7886-506	\$45.00
8"	BI-7887-508	\$284.40	BI-7886-508	\$54.00
10"	BI-7887-510	\$387.00	BI-7886-510	\$64.80
12"	BI-7887-512	\$510.30	BI-7886-512	\$81.00
15"	BI-7887-516	\$1,254.60	BI-7886-516	\$109.80

Chuck Size	Wrench		Fine Adjustment Screw	
	Part Number	Price	Part Number	Price
5"	BI-7889-005	\$42.30	BI-7897-6051	\$13.50
6"	BI-7889-008	\$45.00	BI-7897-6061	\$17.10
8"	BI-7889-008	\$45.00	BI-7897-6081	\$17.10
10"	BI-7889-012	\$55.80	BI-7897-6101	\$17.10
12"	BI-7889-012	\$55.80	BI-7897-6121	\$17.10
15"	BI-7889-016	\$81.00	BI-7897-6161	\$17.10

Call Us Or Visit Our Website For Our Complete Selection!

LATHE CHUCKS
LIVE CENTERS

WISE JAWS
WISE ACCESSORIES

STRAIGHT SHANK
COLLET HOLDERS

TAP HOLDERS
DRILL CHUCKS

CARBIDE INSERTS
THREADING/GROOVING

CUTTING TOOLS
MACHINERY

PRECISION TOOLS
DEBRUING

COOLANT/FLUIDS
TOOL STORAGE

MANUAL CHUCKS

FORGED STEEL BODY SCROLL CHUCKS

Model ATSC- Hardened Reversible Top Jaws



BUCK CHUCK is continuously striving to make its products better so that your production can be more efficient! Buck has engineered and built some of the finest chucks in the world for over 75 years. Replacement parts and accessories also available.

Full Line Available!
Please call for more information.



FEATURES:

- *Ajust-Tru*- the original, renowned adjustment mechanism
- Forged Steel Body
- Hardened and ground scroll and jaws
- 3 Jaw Model Recommended for general O.D. or I.D. workholding. These chucks remain accurate throughout the life of the chuck using the *Ajust-Tru* feature.
- 6 Jaw Model is ideal for thin wall and second operation machining. Eliminates the need for collets as a 6" chuck can handle the work of more than 100 separate collets.
- Chucks supplied with jaws, wrench and mounting screws

Chuck Size	Thru Hole	3 Jaw Chucks			4 Jaw Chucks			6 Jaw Chucks		
		Max RPM	Part Number	Price Each	Max RPM	Part Number	Price Each	Max RPM	Part Number	Price Each
6"	1.780"	4,600	BK-B8063	\$960.00	4,600	BK-B8064	\$1,305.00	3,450	BK-B8066	\$1,401.00
8"	2.370"	4,000	BK-B8083	\$1,257.00	4,000	BK-B8084	\$1,409.00	3,000	BK-B8086	\$1,700.00
10"	3.230"	3,000	BK-B8103	\$1,573.00	3,000	BK-B8104	\$2,023.00	2,250	BK-B8106	\$2,151.00
12"	4.140"	2,300	BK-B8123	\$2,264.00	2,300	BK-B8124	\$2,902.00	1,725	BK-B8126	\$2,911.00
15"	5.510"	1,800	BK-B8153	\$4,200.00	-	-	-	1,350	BK-B8156	\$5,388.00



D1 CAMLOCK MOUNTING PLATES

Chuck Size	Spindle	Part Number	Price
6"	D-4	BK-A5-D4	\$400.00
6"	D-5	BK-A6-D5	\$500.00
8"	D-5	BK-A8-D5	\$525.00
8"	D-6	BK-A8-D6	\$469.00
10"	D-6	BK-A10-D6	\$625.00
10"	D-8	BK-A10-D8	\$685.00
12"	D-6	BK-A12-D6	\$650.00
12"	D-8	BK-A12-D8	\$685.00



A STYLE MOUNTING PLATES

Chuck Size	Spindle	Part Number	Price
6"	A-4	BK-A6-A4	\$450.00
6"	A-5	BK-A6-A5	\$425.00
8"	A-5	BK-A8-A5	\$475.00
8"	A-6	BK-A8-A6	\$500.00
10"	A-6	BK-A10-A6	\$600.00
10"	A-8	BK-A10-A8	\$650.00
12"	A-8	BK-A12-A8	\$700.00
12"	A-11	BK-A12-A11	\$1,100.00

SEMI-STEEL BODY SCROLL CHUCKS

Model AT- Hardened Reversible Top Jaws



FEATURES:

- .001" TIR repeatability
- Cast iron body allows for more affordable, yet high quality chuck
- Hardened and ground scroll is balanced
- Ships complete with master and hardened top reversible jaws, spring loaded T-wrench and mounting bolts



Chuck Size	Thru Hole	3 Jaw Chucks			6 Jaw Chucks		
		Max. RPM	Part Number	Price Each	Max. RPM	Part Number	Price Each
6"	1.540"	3,000	BK-AT063RC	\$695.00	2,500	BK-AT066RC	\$1,110.00
8"	2.346"	2,500	BK-AT083RC	\$829.00	2,000	BK-AT086RC	\$1,324.00
10"	2.860"	2,000	BK-AT103RC	\$1,321.00	1,600	BK-AT106RC	\$1,882.00
12"	3.285"	1,500	BK-AT123RC	\$1,981.00	1,100	BK-AT126RC	\$2,746.00

D1 CAMLOCK MOUNTING PLATES

Chuck Size	Spindle	Part Number	Price
6"	D-4	BK-B6-D4	\$194.00
6"	D-5	BK-B6-D5	\$193.00
8"	D-5	BK-B8-D5	\$224.00
8"	D-6	BK-B8-D6	\$224.00
10"	D-6	BK-B10-D6	\$263.00
10"	D-8	BK-B10-D8	\$263.00
12"	D-6	BK-B12-D6	\$338.00
12"	D-8	BK-B12-D8	\$338.00



A STYLE MOUNTING PLATES

Chuck Size	Spindle	Part Number	Price
6"	A-4	BK-B6-A4	\$290.00
6"	A-5	BK-B6-A5	\$171.00
8"	A-5	BK-B8-A5	\$229.00
8"	A-6	BK-B8-A6	\$224.00
10"	A-6	BK-B10-A6	\$271.00
10"	A-8	BK-B10-A8	\$271.00
12"	A-6	BK-B12-A6	\$338.00
12"	A-8	BK-B12-A8	\$338.00

Call Us Today For All Of Your Machine Tool Needs!

SET-TRU SCROLL CHUCKS

With Fine Adjustment, 0.0006" T.I.R.
Forged Steel Body, Two-Piece Top Reversible Jaws



TMX SET-TRU Scroll Chucks can be used for all machining operations where universal chucks are used, along with applications where universal scroll chucks require tighter tolerances.

SET-TRU Chuck Features and Benefits:

- Fine adjustment, 0.0006" TIR
- Forged steel body
- 3 pinion design
- 4 micro adjustment screws provide .0004" T.I.R. repeatability
- Two piece top and master jaws are American Standard tongue and groove
- Scrolls are forged and fully hardened with thread flanks ground on both sides, then precisely balanced for longer life and higher accuracy
- Jaw teeth and guides on both sides are fully hardened and ground.
- Plain back chuck- mounting plates required.



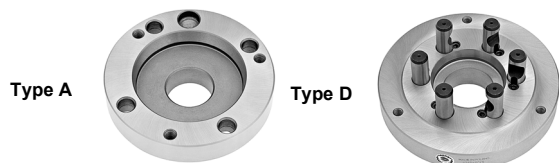
Each chuck is provided with:

- 1 Set of hard master jaws
- 1 Set of hard top reversible jaws
- 1 Chuck wrench
- 1 Set of mounting bolts
- 1 Set of fine adjustment screws
- Eye bolts (16" only)

Chuck Size	Thru Hole	3 Jaw Set-Tru Chucks			4 Jaw Set-Tru Chucks			6 Jaw Set-Tru Chucks		
		Max RPM	Part Number	Price	Max RPM	Part Number	Price	Max RPM	Part Number	Price
5"	1.378"	3800	BI-3866-0500P	\$588.12	-	-	-	5500	BI-3868-0500P	\$821.74
6"	1.654"	4600	BI-3866-0600P	\$677.21	4600	BI-3847-0600P	\$1,008.08	4600	BI-3868-0600P	\$987.17
8"	2.165"	4000	BI-3866-0800P	\$809.92	4000	BI-3847-0800P	\$1,155.34	4000	BI-3868-0800P	\$1,211.70
10"	2.992"	3500	BI-3866-1000P	\$1,119.89	3500	BI-3847-1000P	\$1,531.67	2400	BI-3868-1000P	\$1,371.68
12"	4.055"	2800	BI-3866-1200P	\$1,438.04	2800	BI-3847-1200P	\$1,903.45	1900	BI-3868-1200P	\$1,876.18
15"	5.354"	2000	BI-3866-1600P	\$2,746.09	2000	BI-3847-1600P	\$3,013.34	2000	BI-3868-1600P	\$3,624.18

BACKPLATES FOR SET-TRU® CHUCKS

- Fully machined steel backplates for precision accuracy TMX Set-Tru® Chucks



Type A

Chuck Size	Spindle	Part Number	Price
6"	A5	BI-3874-065P	\$171.55
8"	A5	BI-3874-085P	\$181.73
	A6	BI-3874-086P	\$181.73
10"	A5	BI-3874-105P	\$215.58
	A6	BI-3874-106P	\$215.58
12"	A6	BI-3874-126P	\$336.73
	A8	BI-3874-128P	\$336.73
15"	A11	BI-3874-129P	\$357.35
	A8	BI-3874-168P	\$537.04
	A11	BI-3874-169P	\$537.04

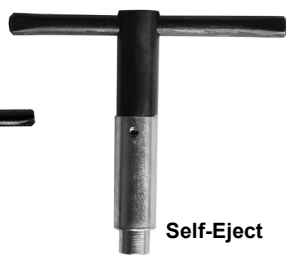
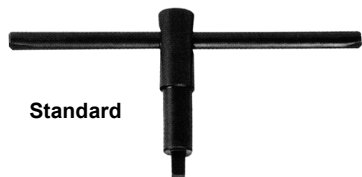
Type D

Chuck Size	Spindle	Part Number	Price
5"	D1-4	BI-3875-054P	\$223.47
6"	D1-3	BI-3875-063P	\$265.98
	D1-4	BI-3875-064P	\$265.98
8"	D1-4	BI-3875-084P	\$290.92
	D1-5	BI-3875-085P	\$290.92
10"	D1-6	BI-3875-086P	\$301.10
	D1-6	BI-3875-106P	\$420.47
12"	D1-8	BI-3875-108P	\$441.85
	D1-6	BI-3875-126P	\$561.47
16"	D1-8	BI-3875-128P	\$586.93
	D1-11	BI-3875-169P	\$712.40

CHUCK KEYS



- Crafted from high quality tool steel
- Available in standard and self-ejecting models
- Sizes available from 1/4" to 9/16" square head size



LATHE CHUCK SAFETY WRENCHES

- Spring-load sleeve ejects the wrench from the chuck after each use
- Chamfered end for easy entry
- Designed to provide proper loads for self-removal of the wrench weight
- High visibility yellow handle
- Helps prevent accidents



Square Head Size	Standard		Self-Eject	
	Part Number	Price	Part Number	Price
1/4"	A-3900-4865	\$11.00	-	-
5/16"	A-3900-4866	\$11.00	A-3900-4857	\$18.00
3/8"	A-3900-4867	\$11.00	A-3900-4853	\$20.00
7/16"	A-3900-4868	\$11.50	-	-
1/2"	A-3900-4869	\$12.50	A-3900-4855	\$21.00
9/16"	A-3900-4870	\$12.50	-	-

Nominal Size	Actual Size	Bar Dia	Overall Dia	Engagement Length	Part Number	Price
9/32" SQ	.271"	3/4"	1.050"	3/4"	FXB-15470	\$114.37
5/16" SQ	.303"	3/4"	1.050"	3/4"	FXB-15471	\$114.37
3/8" SQ	.365"	3/4"	1.050"	3/4"	FXB-15472	\$114.37
7/16" SQ	.427"	3/4"	1.050"	3/4"	FXB-15473	\$114.37
1/2" SQ	.490"	3/4"	1.050"	3/4"	FXB-15474	\$114.37
9/16" SQ	.552"	15/16"	1.315"	3/4"	FXB-15477	\$126.44
5/8" SQ	.615"	15/16"	1.315"	3/4"	FXB-15478	\$126.44
3/4" SQ	.740"	15/16"	1.315"	3/4"	FXB-15480	\$126.44

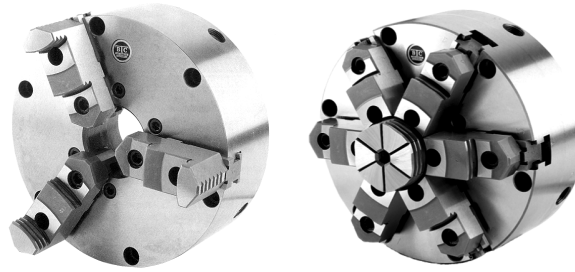
Call Us Or Visit Our Website For Our Complete Selection!

ZERO-SET MANUAL CHUCKS

3 JAW SCROLL CHUCKS-ZERO SET With Top Reversible Jaws

FEATURES:

- High precision-.0004" TIR repeatability on duplicated parts
- Forged steel body
- 2-piece reversible jaws for OD and ID work
- Scroll and jaws hardened and ground for increased life and gripping force
- Must be used with "Zero-Set" backplates from BTC



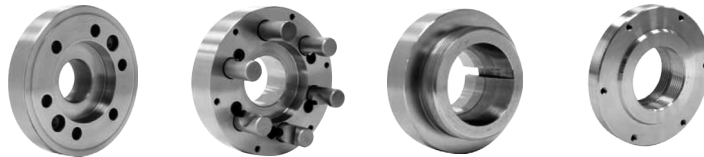
Package Includes:
Chuck, Master Jaws,
Top Jaws, T-Wrench
& Mounting Screws

Chuck Dia	Thru Hole	3-Jaw Zero Set Chucks				6-Jaw Zero Set Chucks			
		Max RPM	Weight (lbs)	Part Number	Price	Max RPM	Weight (lbs)	Part Number	Price
6"	1.535"	3,700	22	BT-S1063R	\$810.00	2,700	27	BT-S1066R	\$1,055.00
8"	2.264"	3,300	52	BT-S1083R	\$995.00	2,300	57	BT-S1086R	\$1,665.00
10"	2.835"	2,900	73	BT-S1103R	\$1,260.00	2,000	78	BT-S1106R	\$1,995.00
12"	3.268"	2,300	120	BT-S1123R	\$1,695.00	1,600	146	BT-S1126R	\$2,550.00
15"	4.252"	1,900	200	BT-S1153R	\$2,525.00	1,500	240	BT-S1156R	\$4,250.00

ZERO SET MOUNTING PLATES

FEATURES:

- Designed for easy installation
- Minimizes overhang by virtue of recessed design
- Fully finished mounting plates



A-MOUNT BACKPLATES

Chuck Size	Spindle	Part Number	Price
5"	A2-4	BT-AS-304	\$148.50
	A2-5	BT-AS-305	\$148.50
6"	A2-5	BT-AS-302	\$148.50
	A2-6	BT-AS-303	\$171.00
8"	A2-5	BT-AS-307	\$180.00
	A2-6	BT-AS-308	\$180.00
	A2-8	BT-AS-309	\$265.50
10"	A2-5	BT-AS-311	\$216.00
	A2-6	BT-AS-312	\$216.00
	A2-8	BT-AS-313	\$220.50
12"	A2-6	BT-AS-315	\$283.00
	A2-8	BT-AS-316	\$283.00
15"	A2-8	BT-AS-344	\$490.50
	A2-11	BT-AS-349	\$490.50

D-MOUNT BACKPLATES

Chuck Size	Spindle	Part Number	Price
5"	D-3	BT-CD-205	\$171.00
	D-4	BT-CD-221	\$171.00
6"	D-3	BT-CD-203	\$171.00
	D-4	BT-CD-201	\$171.00
	D-5	BT-CD-202	\$171.00
	D-6	BT-CD-206	\$220.50
8"	D-4	BT-CD-204	\$211.50
	D-5	BT-CD-208	\$211.50
	D-6	BT-CD-209	\$220.50
	D-8	BT-CD-207	\$270.00
10"	D-5	BT-CD-210	\$265.50
	D-6	BT-CD-211	\$265.50
	D-8	BT-CD-212	\$315.00
	D-8	BT-CD-214	\$310.50
12"	D-6	BT-CD-215	\$324.00
	D-8	BT-CD-215	\$324.00
15"	D-8	BT-CD-267	\$571.50
	D-11	BT-CD-266	\$675.00

L-MOUNT BACKPLATES

Chuck Size	Spindle	Part Number	Price
5"	L-00	BT-LT-103	\$180.00
	L-0	BT-LT-104	\$180.00
6"	L-00	BT-LT-100	\$180.00
	L-0	BT-LT-101	\$180.00
8"	L-00	BT-LT-108	\$202.50
	L-0	BT-LT-109	\$202.50
8"	L-1	BT-LT-110	\$211.50
	L-00	BT-LT-111	\$256.50
10"	L-0	BT-LT-112	\$256.50
	L-1	BT-LT-113	\$265.50
12"	L-0	BT-LT-115	\$337.50
	L-1	BT-LT-116	\$337.50
15"	L-0	BT-LT-175	\$405.00
	L-1	BT-LT-176	\$405.00
15"	L-2	BT-LT-177	\$454.50

THREADED MOUNT BACKPLATES

Chuck Size	Spindle	Part Number	Price
5"	1-1/2-8	BT-TH-903	\$175.50
	1-3/4-8"	BT-TH-904	\$175.50
6"	1-1/2-8	BT-TH-950	\$157.50
	1-3/4-8"	BT-TH-951	\$157.50
	2-1/4-8"	BT-TH-955	\$157.50
6"	2-3/8-6"	BT-TH-958	\$157.50
	2-1/4-8"	BT-TH-985	\$238.50
8"	2-3/8-6"	BT-TH-986	\$288.00
	1-3/4-8"	BT-TH-994	\$247.50
10"	2-1/4-8"	BT-TH-995	\$247.50
	2-3/8-6"	BT-TH-989	\$247.50
12"	2-3/8-6"	BT-TH-997	\$517.50
	2-3/4-8"	BT-TH-999	\$517.50

REPLACEMENT PARTS FOR ZERO SET CHUCKS



Hard Top Jaws



Master Jaws



Chuck Body (2 piece)



Scroll

Chuck Size	Model	Hard Top Jaw Set		Master Jaw Set		Chuck Body (2 Pc)		Chuck Scroll	
		Part Number	Set Price	Part Number	Set Price	Part Number	Price Each	Part Number	Price Each
3 Jaw Zero Set Chucks									
5"	1053R	BT-530-7	\$155.00	BT-530-6	\$165.00	BT-530-8	\$265.00	BT-530-1	\$105.00
6"	1063R	BT-630-7	\$165.00	BT-630-6	\$175.00	BT-630-8	\$315.00	BT-630-1	\$210.00
8"	1083R	BT-830-7	\$195.00	BT-830-6	\$205.00	BT-830-8	\$350.00	BT-830-1	\$250.00
10"	1103R	BT-103-7	\$265.00	BT-103-6	\$295.00	BT-103-8	\$450.00	BT-103-1	\$315.00
12"	1123R	BT-123-7	\$325.00	BT-123-6	\$335.00	BT-123-8	\$550.00	BT-123-1	\$350.00
15"	1153R	BT-153-7	\$450.00	BT-153-6	\$555.00	BT-153-8	\$850.00	BT-153-1	\$425.00
6 Jaw Zero Set Chucks									
6"	1066R	BT-660-7	\$265.00	BT-660-6	\$275.00	BT-660-8	\$415.00	BT-660-1	\$210.00
8"	1086R	BT-860-7	\$365.00	BT-860-6	\$375.00	BT-860-8	\$475.00	BT-860-1	\$250.00
10"	1106R	BT-106-7	\$485.00	BT-106-6	\$495.00	BT-106-8	\$595.00	BT-106-1	\$315.00
12"	1126R	BT-126-7	\$565.00	BT-126-6	\$575.00	BT-126-8	\$695.00	BT-126-1	\$350.00
15"	1156R	BT-156-7	\$725.00	BT-156-6	\$795.00	BT-156-8	\$1,395.00	BT-156-1	\$965.00

Additional Replacement Parts Also Available. Please Call For More Information.

Call Us Today For All Of Your Machine Tool Needs!

3 JAW SELF-CENTERING SCROLL CHUCKS

Forged Steel & Semi-Steel Body
Plain Back Chuck-Backplates Required

Extremely accurate and guaranteed to maintain exceptional accuracy for an extended period of time, these chucks have a modern and compact design. For use whenever high precision machining is needed

- Forged or semi-steel body
- All bearing surfaces are carefully hardened and precisely machined
- Scroll is made of fine quality alloy steel and carefully case hardened
- Thread flanks are ground on both sides
- Each scroll is balanced
- Teeth and guides are hardened and fully ground on both sides
- 3 pinion design
- Hardened and ground pinions



Two-Piece Jaw Style



Solid Jaw Style



LATHE CHUCKS
LIVE CENTERS

VICE JAWS
VICE ACCESSORIES

STRAIGHT SHANK
COLLET HOLDERS

TAP HOLDERS
DRILL CHUCKS

CARBIDE INSERTS
THREADING/GROOVING

CUTTING TOOLS
MACHINERY

PRECISION TOOLS
DEBURRING

COOLANT/FLUIDS
TOOL STORAGE

Forged Steel Body

With Two-Piece Reversible Jaws-Type 3505

Chuck Size	Thru Hole	Max RPM	Weight lbs	Part Number	Price
5"	1.398	4800	11	BI-7820-0500	\$700.20
6"	1.654	4500	22	BI-7820-0600	\$799.20
8"	2.165	4000	39	BI-7820-0800	\$999.00
10"	2.992	3500	55	BI-7820-1000	\$1,277.10
12"	4.055	2800	110	BI-7820-1200	\$1,825.20
15"	5.354	2000	187	BI-7820-1600	\$3,076.20
20"	7.480	1200	320	BI-7820-2000	\$8,190.00
25"	9.921	1000	551	BI-7820-2500	\$11,277.00

With Solid Hard Jaws-Type 3504

Max RPM	Weight lbs	Part Number	Price
4800	11	BI-7829-0500	\$628.20
4500	22	BI-7829-0600	\$734.40
4000	39	BI-7829-0800	\$905.40
3500	55	BI-7829-1000	\$1,162.80
2800	110	BI-7829-1200	\$1,726.20



Back View

Semi Steel Body

With Two-Piece Reversible Jaws-Type 3205

Chuck Size	Thru Hole	Max RPM	Weight	Part Number	Price
5"	1.260	3200	11	BI-7800-0500	\$484.20
6"	1.654	3000	22	BI-7800-0600	\$516.60
8"	2.166	2500	39	BI-7800-0800	\$620.10
10"	2.992	2000	55	BI-7800-1000	\$877.50
12"	4.055	1500	110	BI-7800-1200	\$1,292.40
15"	5.354	1000	187	BI-7800-1600	\$2,129.40
20"	7.480	700	320	BI-7800-2000	\$5,652.00
25"	9.921	500	551	BI-7800-2500	\$8,757.00

With Solid Hard Jaws-Type 3204

Max RPM	Weight lbs	Part Number	Price
3200	11	BI-7810-0500	\$435.60
3000	22	BI-7810-0600	\$481.50
2500	39	BI-7810-0800	\$576.00
2000	55	BI-7810-1000	\$733.50
1500	110	BI-7810-1200	\$1,098.90
1000	187	BI-7810-1600	\$1,947.60
700	320	BI-7810-2000	\$5,157.00
500	551	BI-7810-2500	\$7,965.00

Two-Piece Reversible Jaw Chucks are provided with:

- 1 set of hard master jaws
- 1 set of hard top reversible jaws
- 1 chuck wrench
- 1 set of mounting bolts
- 2 hex keys
- Eye bolts for chucks 15" & larger

Solid Jaw Style Chucks are provided with:

- 1 set of hard solid ID jaws
- 1 set of hard solid OD jaws
- 1 chuck wrench
- 1 set of mounting bolts
- 1 hex key
- Eye bolts for chucks 15" & larger

BACKPLATES FOR SELF-CENTERING SCROLL CHUCKS

- Fits 3 and 4 jaw self-centering scroll chucks
- Machined backplates for plain back chucks
- May require additional machining to fit
- Threaded backplates also available



Type A



Type D



Type L



A1/A2 Semi-Machined Backplate

Chuck Size	Spindle	Part Number	Price
5"	A6	BI-7873-056	\$150.30
	A8	BI-7873-058	\$194.40
6"	A5	BI-7873-065	\$162.90
8"	A5	BI-7873-085	\$191.70
	A6	BI-7873-086	\$191.70
10"	A6	BI-7873-106	\$250.20
	A8	BI-7873-108	\$265.50
12"	A6	BI-7873-126	\$333.90
	A8	BI-7873-128	\$362.70
15"	A8	BI-7873-168	\$561.60
	A11	BI-7873-169	\$561.60
20"	A2-11	BI-7873-209	\$864.00
25"	A2-11	BI-7873-259	\$1,430.10
	A15	BI-7873-2595	\$1,564.20
	A2-20	BI-7873-2598	\$1,589.40

Fully Machined D1 Backplates

Chuck Size	Spindle	Part Number	Price
4"	D1-4	BI-7878-044F	\$191.70
		BI-7878-053F	\$218.70
5"	D1-4	BI-7878-054F	\$218.70
		BI-7878-064F	\$259.20
6"	D1-5	BI-7878-065F	\$259.20
		BI-7878-066F	\$259.20
		BI-7878-084F	\$295.20
8"	D1-5	BI-7878-085F	\$295.20
		BI-7878-086F	\$297.90
		BI-7878-105F	\$384.30
10"	D1-6	BI-7878-106F	\$378.90
		BI-7878-108F	\$383.40
		BI-7878-126F	\$490.50
12"	D1-8	BI-7878-128F	\$548.10
		BI-7878-129F	\$528.30
		BI-7878-166F	\$702.00
15"	D1-11	BI-7878-168F	\$819.00
		BI-7878-169F	\$902.70

Fully Machined Type L Backplates

Chuck Size	Taper	Part Number	Price
5"	L00	BI-7879-051	\$176.40
		BI-7879-061	\$189.90
6"	L0	BI-7879-062	\$189.90
		BI-7879-081	\$207.00
8"	L0	BI-7879-082	\$207.00
		BI-7879-083	\$225.90
		BI-7879-101	\$262.80
10"	L0	BI-7879-102	\$262.80
		BI-7879-103	\$276.30
		BI-7879-122	\$395.10
12"	L1	BI-7879-123	\$395.10
		BI-7879-124	\$477.90
		BI-7879-163	\$607.50
15"	L2	BI-7879-164	\$634.50
		BI-7879-165	\$674.10

Call Us Or Visit Our Website For Our Complete Selection!



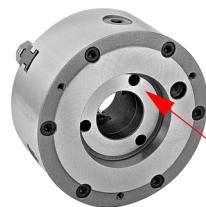
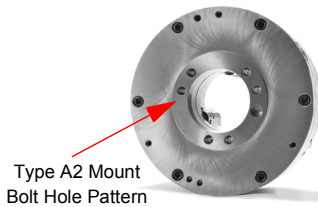
BISON™ DIRECT MOUNT CHUCKS

3 JAW SELF-CENTERING SCROLL CHUCKS

Type A1 And A2 Direct Mount

With Two-Piece Hard Reversible Jaws

- Type 3215
- Type A1 & A2 direct mount chucks
- Two piece "master jaw" style jaws
- Semi-steel body
- Type A1 spindles have a 2 bolt hole patterns, inside and outside the taper.
- Either an A1 or A2 chuck will fit
- Type A2 spindles have a 1 bolt pattern outside the taper-only an A2 chuck will fit
- Hardened and ground pinions



A1/A2 Direct Mount Chucks-Type 3215

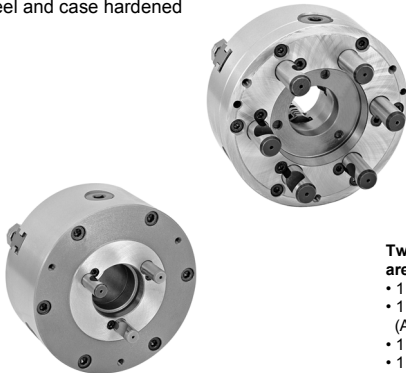
Chuck Size	Spindle	Thru Hole	Part Number	Price
6"	A1-5	1.654	BI-7801-0615	\$862.20
8"	A1-5	1.654	BI-7801-0815	\$998.10
	A1-6	2.165	BI-7801-0816	\$998.10
10"	A2-5	2.992	BI-7801-1015	\$1,267.20
	A1-6	2.164	BI-7801-1016	\$1,267.20
	A1-8	2.992	BI-7801-1018	\$1,267.20
12"	A2-6	4.055	BI-7801-1216	\$1,875.60
	A1-8	3.150	BI-7801-1218	\$1,875.60
15-3/4"	A2-6	4.055	BI-7801-1616	\$3,244.50
	A2-8	5.354	BI-7801-1618	\$3,244.50
	A1-11	5.118	BI-7801-1619	\$3,244.50
20"	A2-11	7.591	BI-7801-2029	\$7,641.00
25"	A2-11	7.480	BI-7801-2511	\$10,026.00
	A2-15	7.480	BI-7801-2515	\$10,026.00
32"	A2-20	12.598	BI-7801-3220	\$16,551.00

3 JAW SELF-CENTERING SCROLL CHUCKS

Camlock Type D1, Direct Mount

With Two-Piece Hard Reversible Jaws

- Type 3245
- Camlock type D1 direct mount chuck
- Two piece "master jaw" style jaws
- Semi-steel body
- Hardened and ground pinions
- Scroll is drop forged of alloy steel and case hardened



Two-Piece Reversible Jaw Chucks are provided with:

- 1 set of hard master jaws
- 1 set of hard top reversible jaws (American Std Tongue & Groove)
- 1 chuck wrench
- 1 set of mounting bolts
- 2 hex keys

Camlock Type D1 Direct Mount Chucks-Type 3245

Chuck Size	Spindle	Thru Hole	Part Number	Price
5"	D1-4	1.260	BI-7803-0534	\$710.10
6"	D1-3	1.654	BI-7803-0633	\$810.90
	D1-4	1.654	BI-7803-0634	\$810.90
8"	D1-4	2.028	BI-7803-0834	\$963.00
	D1-5	2.165	BI-7803-0835	\$963.00
	D1-6	2.165	BI-7803-0836	\$963.00
10"	D1-5	2.165	BI-7803-1035	\$1,318.50
	D1-6	2.992	BI-7803-1036	\$1,318.50
	D1-8	2.992	BI-7803-1038	\$1,318.50
12"	D1-6	2.992	BI-7803-1236	\$2,027.70
	D1-8	4.055	BI-7803-1238	\$2,027.70
	D1-11	4.055	BI-7803-1239	\$2,027.70
15-3/4"	D1-6	4.055	BI-7803-1636	\$3,650.40
	D1-8	5.354	BI-7803-1638	\$3,650.40
	D1-11	5.354	BI-7803-1639	\$3,650.40
20"	D1-8	5.354	BI-7803-2038	\$7,587.00
	D1-11	7.598	BI-7803-2039	\$7,587.00
25"	D1-11	7.598	BI-7803-2539	\$10,323.00

3 JAW SELF-CENTERING SCROLL CHUCKS

Type L Direct Mount, With Two-Piece Hard Reversible Jaws



Chuck Size	Spindle	Thru Hole	Part Number	Price
6"	L00	1.654	BI-7804-0641	\$774.00
	L0	1.654	BI-7804-0642	\$774.00
8"	L00	2.165	BI-7804-0841	\$911.70
	L1	2.165	BI-7804-0842	\$911.70
10"	L1	2.992	BI-7804-1042	\$1,314.90
	L2	2.992	BI-7804-1043	\$1,314.90
	L2	2.992	BI-7804-1044	\$1,314.90
12"	L0	4.055	BI-7804-1242	\$1,808.10
	L1	4.055	BI-7804-1243	\$1,808.10
	L2	4.055	BI-7804-1244	\$1,808.10
15-3/4"	L1	4.055	BI-7804-1643	\$2,980.80
	L2	4.055	BI-7804-1644	\$2,980.80

3 JAW SELF-CENTERING SCROLL CHUCKS

Threaded Direct Mount, With Two-Piece Hard Reversible Jaws



Threaded Direct Mount Chucks-Type 3285/3284

Chuck Size	Spindle	Thru Hole	Part Number	Price
4"	1-10	0.787	BI-7805-0451	\$599.40
	1-1/2-8	0.787	BI-7805-0452	\$599.40
5"	1-10	1.260	BI-7805-0551	\$693.90
	1-1/2-8	1.260	BI-7805-0552	\$693.90
6"	1-1/2-8	1.575	BI-7805-0652	\$748.80
	2-1/4-8	1.575	BI-7805-0653	\$748.80
8"	1-1/2-8	2.165	BI-7805-0852	\$879.30
	2-1/4-8	2.165	BI-7805-0853	\$879.30
	2-3/8-6	2.165	BI-7805-0854	\$879.30
10"	2-1/4-8	2.992	BI-7805-1053	\$1,183.50

Call Us Today For All Of Your Machine Tool Needs!

2019-20 MASTER CATALOG

3 JAW SCROLL CHUCKS

B

3-JAW UNIVERSAL SCROLL CHUCKS

Plain Back • Forged Steel Body • 2-Piece Reversible Jaws



- Designed to handle precision or heavy duty machining demands
- Two piece, master jaw style top jaws
- Each scroll chuck is statically balanced for longer life and higher accuracy
- All bearing surfaces carefully machined and hardened
- Chuck bodies are drop forged and hardened to 28 HRC



Package Includes:
Chuck, Master Jaws,
Top Jaws, T-Wrench
& Mounting Screws

Chuck Dia	Hole Dia	Max RPM	Wt lbs	Part Number	Price
6"	1.653	4600	22	BI-3820-0600P	\$619.47
8"	2.165	4000	39	BI-3820-0800P	\$761.67
10"	2.992	3500	64	BI-3820-1000P	\$1,114.83
12"	4.055	2800	111	BI-3820-1200P	\$1,460.34
16"	5.354	2000	189	BI-3820-1600P	\$2,555.10
20"	7.480	1300	322	BI-3820-2000P	\$6,077.07
25"	9.921	1000	556	BI-3820-2500P	\$7,920.99

3-JAW UNIVERSAL SCROLL CHUCKS

D-1 Direct Mount Type • 2-Piece Reversible Jaws



- Direct mount camlock type D1-no backplates required
- Designed to handle precision or heavy duty machining demands
- Two piece, master jaw style top jaws
- Each scroll chuck is statically balanced for longer life and higher accuracy
- All bearing surfaces carefully machined and hardened
- Chuck bodies are drop forged and hardened to 28 HRC



D1 Direct Mount

Chuck Dia	Spindle	Hole Dia	Max RPM	Wt lbs	Part Number	Price
8"	D1-6	2.165	4000	52	BI-3823-0836P	\$956.43
10"	D1-6	2.992	3500	88	BI-3823-1036P	\$1,317.15
10"	D1-8	2.992	3500	88	BI-3823-1038P	\$1,317.15
12"	D1-6	4.173	2800	150	BI-3823-1236P	\$1,692.56
12"	D1-8	4.173	2800	150	BI-3823-1238P	\$1,692.56
16"	D1-8	5.354	2000	261	BI-3823-1638P	\$3,097.26
16"	D1-11	5.354	2000	261	BI-3823-1639P	\$3,097.26
20"	D1-11	7.480	1300	424	BI-3823-2039P	\$6,571.44
25"	D1-11	7.480	1000	748	BI-3823-2539P	\$8,380.08

3 JAW SCROLL CHUCKS

D-1 Direct Mount Type • 2-Piece Reversible Jaws

FEATURES:

- 2-piece master jaw style jaws with top reversible jaws for ID and OD workholding
- Semi-steel body
- Scroll and jaws hardened and ground



Package Includes:
Chuck, Master Jaws,
Top Jaws, T-Wrench
& Mounting Screws

Size	Spindle	Thru Hole	Weight (lbs)	Part Number	Price Each
6"	D1-4	1.575"	32	BT-6063D4	\$368.00
	D1-5	1.575"	32	BT-6063D5	\$368.00
8"	D1-5	1.969"	47	BT-6083D5	\$460.00
	D1-6	1.969"	47	BT-6083D6	\$460.00
10"	D1-6	2.756"	74	BT-6103D6	\$607.75
	D1-8	3.150"	74	BT-6103D8	\$607.75
12"	D1-6	3.937"	142	BT-6123D6	\$790.50
	D1-8	3.937"	142	BT-6123D8	\$790.50
15"	D1-8	5.118"	155	BT-6153D8	\$1,275.00
	D1-11	5.315"	155	BT-6153D11	\$1,275.00
20"	D1-11	7.480"	320	BT-6203D11	\$2,885.75
	D1-15	8.268"	320	BT-6203D15	\$2,885.75

3 JAW SCROLL CHUCKS

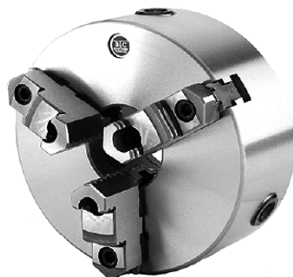
Plain Back • 2-Piece Reversible Jaws



FEATURES:

- 2-piece master jaw style jaws with top reversible jaws for ID and OD workholding
- 0.003" TIR repeatability
- Meets ASA specifications on duplicate parts for chucks through 12" diameter
- Semi-steel body
- Scroll and jaws hardened and ground

Package Includes:
Chuck, Master Jaws,
Top Jaws, T-Wrench
& Mounting Screws

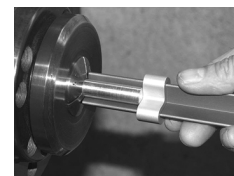
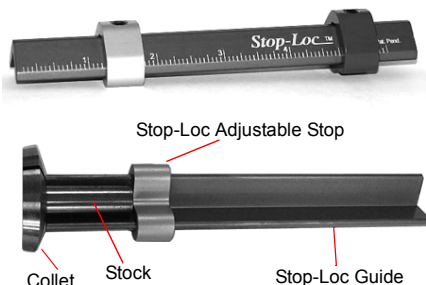


Chuck Size	Thru Hole	Weight (lbs)	Part Number	Price
6"	1.575"	21	BT-3063R	\$304.00
8"	2.559"	39	BT-3083R	\$392.00
10"	3.150"	56	BT-3103R	\$452.00
12"	3.937"	99	BT-3123R	\$580.00
15"	5.315"	122	BT-3153R	\$1,080.00
20"	8.268"	320	BT-3203R	\$2,590.00
25"	10.236"	510	BT-3253R	\$4,444.00

CHUCK/COLLET STOP

Handheld Lathe & Mill Vise Tool

- Adjustable Precision-Gage lengths up to 5-1/2" long holding +/- .005
- Save Money! No more fixed length dedicated shop-made front collet stops for each job
- Versatile-For use on CNC or manual lathes whether you are running a bar manually or using a bar puller
- Consistency-Unique design incorporates self-centering & unobstructed viewing
- Dimensions: 6" L x 3/4" H x 3/4" W
- Made in USA



Stop-Loc
Pat.Pend.



Graduations	Part Number	Price
Inch	STOPLOC	\$16.00
Inch/Metric	STOPLOC-THSMM	\$18.00
Metric	STOPLOC-MM	\$18.00

Call Us Or Visit Our Website For Our Complete Selection!

2019-20 MASTER CATALOG

81

LATHE CHUCKS
LIVE CENTERS

VICE JAWS
VICE ACCESSORIES

STRAIGHT SHANK
COLLET HOLDERS

TAP HOLDERS
DRILL CHUCKS

CARBIDE INSERTS
THREADING/GROOVING

CUTTING TOOLS
MACHINERY

PRECISION TOOLS
DEBURRING

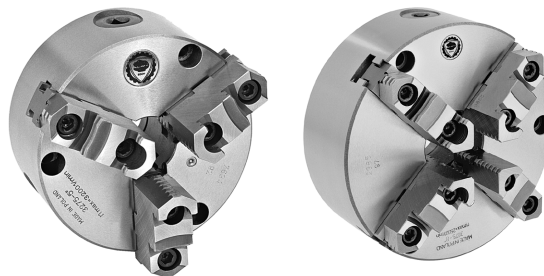
COOLANT/FLUIDS
TOOL STORAGE

FRONT MOUNTING/LOW PROFILE CHUCKS

3 & 4 JAW FRONT MOUNTING SELF-CENTERING SCROLL CHUCKS

With Top Reversible Jaws

- For use with applications where back mounting chucks cannot be used
- 2-piece master jaw style jaws with top reversible jaws for ID and OD workholding
- Semi-steel body
- Also available in forged steel body



3 Jaw Chuck

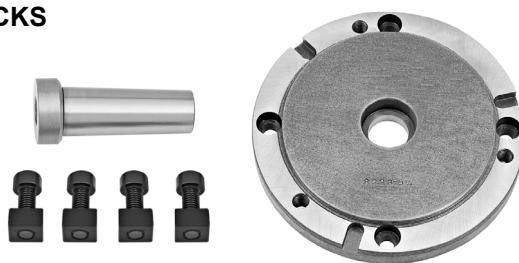
Chuck Size	Thru Hole	Weight (lbs)	Part Number	Price	Mounting Bolts	
					Thread	Number of Bolts
5"	1.260"	10	BI-7812-0500	\$542.70	5/16-18 x 2-1/4	3
6"	1.654"	17	BI-7812-0600	\$608.40	3/18-16 x 2-3/4	3
8"	2.165"	32	BI-7812-0800	\$699.30	3/18-16 x 3-1/4	6
10"	2.992"	52	BI-7812-1000	\$937.80	1/2-13 x 3-1/2	6
12"	4.055"	87	BI-7812-1200	\$1,495.80	5/8-11 x 4	6
15-3/4"	5.354"	163	BI-7812-1600	\$2,357.10	5/8-11 x 4-1/2	6

4 Jaw Chuck

Chuck Size	Thru Hole	Weight (lbs)	Part Number	Price	Mounting Bolts	
					Thread	Number of Bolts
5"	1.260"	10	BI-7814-0500	\$682.20	5/16-18 x 2-1/4	3
6"	1.654"	17	BI-7814-0600	\$735.30	3/18-16 x 2-3/4	3
8"	2.165"	32	BI-7814-0800	\$862.20	3/18-16 x 3-1/4	6
10"	2.992"	52	BI-7814-1000	\$1,115.10	1/2-13 x 3-1/2	6
12"	4.055"	87	BI-7814-1200	\$1,733.40	5/8-11 x 4	6
15-3/4"	5.354"	163	BI-7814-1600	\$2,947.50	5/8-11 x 4-1/2	6

BASE PLATES FOR FRONT MOUNTING CHUCKS

- Designed for use with BISON 3 and 4 jaw front mounting self-centering lathe chucks
- Ideal for use on milling and drilling machines as well as on rotary tables with 3/6 and 4/8 slots
- Base plates are supplied with four mounting bolts with t-nuts and one MT pin



Chuck Size	MT Pin	Part Number	Price
5"	2	BI-7872-305	\$242.10
6"	3	BI-7872-306	\$239.40
8"	3	BI-7872-308	\$306.00
10"	3	BI-7872-310	\$336.60
12-1/2"	4	BI-7872-312	\$538.20
15-3/4"	5	BI-7872-316	\$674.10



2-JAW SCROLL CHUCKS With Soft Top Reversible Jaws

- Type 3105
- Semi-steel body
- Self-centering
- Plain back chuck-backplates required
- Includes 1 set of hard master jaws, 1 set of soft top jaws, chuck wrench, 1 set of mounting bolts, 2 hex keys



Chuck Dia	Thru Hole	Max RPM	Wt. (lbs)	Part Number	Price
6"	1.654	3000	22	BI-7830-0600	\$558.00
8"	2.165	2500	39	BI-7830-0800	\$608.40
10"	2.992	2000	55	BI-7830-1000	\$710.10
12"	4.055	1500	110	BI-7830-1200	\$1,090.80
15-3/4"	5.354	1000	187	BI-7830-1600	\$2,051.10

2-JAW SCROLL CHUCKS With Soft Top Reversible Jaws



- Forged steel body
- Two jaw chuck with two-piece hard reversible jaws
- Plain back- adapter plate sold separately
- Made In Poland

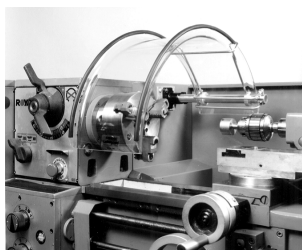
Chuck Dia	Thru Hole	Max RPM	Wt. (lbs)	Part Number	Price
6"	1.654	4600	22	BI-3831-0600P	\$558.36
8"	2.165	4000	39	BI-3831-0800P	\$617.40
10"	2.992	3500	65	BI-3831-1000P	\$742.59
12"	4.055	2800	111	BI-3831-1200P	\$1,170.18
15-3/4"	5.354	2000	189	BI-3831-1600P	\$2,186.73

LATHEGUARDS

Prevent Accidents In The Workplace!



- Clear LEXAN, Semi-Circular wrap-a-round guards
- Heavy Duty Chrome-plated extension tube and hardware
- Ready to mount; simply affix mounting bracket with two screws.
- Back of shield is reinforced with wire-form housing
- Locks in swing away or functional positions
- Accepts 3 or 4-Jaw Chucks
- Included mounting bracket



Lathe Size	Cnt Ht. (Shield Height)	For Use W/ Chucks Up To (A)	Shield Width	Shield Length	Tube Length	Part Number	Price
Small	3.9"	6" Dia	6 1/4"	7.8"	10"	FXB-12999	\$143.68
6 to 12	6"	8" Dia	6 1/4"	11.8"	10"	FXB-13060	\$159.77
12 to 16	8"	12" Dia	8"	15.8"	11 1/2"	FXB-13061	\$182.76
16 to 20	10"	16" Dia	8"	19.70"	13"	FXB-13062	\$198.85
20 to 24	13"	20" Dia	8"	23.6"	13"	FXB-13064	\$227.59

Call Us Today For All Of Your Machine Tool Needs!



4 JAW SELF-CENTERING SCROLL CHUCKS

Semi-Steel Body Plain Back Chuck-Backplates Required
Two-Piece or Solid Jaw Style

- Semi-steel body
- All bearing surfaces are carefully hardened and precisely machined
- Scroll is made of fine quality alloy steel and carefully case hardened
- Thread flanks are ground on both sides
- Teeth and guides are hardened and fully ground on both sides
- 3 pinion design
- See page 68 for backplates



Back View



Chuck Size	Thru Hole	Max RPM	Wt (lbs)	Master Jaw Style Type 3605		Solid Jaw Style Type 3604	
				Part Number	Price	Part Number	Price
5"	1.260	3200	11	BI-7840-0500	\$634.50	BI-7845-0500	\$495.00
6"	1.654	3000	22	BI-7840-0600	\$719.10	BI-7845-0600	\$549.00
8"	2.165	2500	39	BI-7840-0800	\$816.30	BI-7845-0800	\$655.20
10"	2.992	2000	55	BI-7840-1000	\$963.00	BI-7845-1000	\$845.10
12"	4.055	1500	110	BI-7840-1200	\$1,419.30	BI-7845-1200	\$1,286.10
15-3/4"	5.354	1000	187	BI-7840-1600	\$2,357.10	BI-7845-1600	\$2,277.00
20"	7.480	700	320	BI-7840-2000	\$6,228.00	-	-
25"	9.921	500	551	BI-7840-2500	\$9,180.00	-	-

Two-Piece Reversible Jaw Chucks are provided with:

- 1 set of hard master jaws
- 1 set of hard top reversible jaws
- 1 chuck wrench
- 1 set of mounting bolts
- 2 hex keys
- Eye bolts for chucks 15" & larger

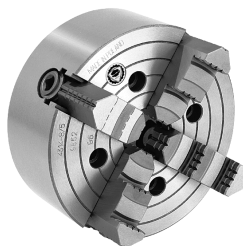
Solid Jaw Style Chucks are provided with:

- 1 set of hard solid ID jaws
- 1 set of hard solid OD jaws
- 1 chuck wrench
- 1 set of mounting bolts
- 1 hex key
- Eye bolts for chucks 15" & larger

4 JAW INDEPENDENT CHUCKS

Semi-Steel Body, Type A1/A2 Direct Mount
With Hard Solid Jaws

- Semi-steel body
- Solid jaws are made of high quality carbon steel and hardened
- Designed to grip round or odd shaped work
- Type A1 spindle has a 2 bolt hole pattern, inside and outside the taper. Either an A1 or A2 chuck will fit
- Type A2 spindles have 1 bolt pattern outside the taper-only an A2 chuck will fit



Solid Jaw Style Chucks are provided with:

- 1 set of hard solid reversible jaws
- 1 wrench
- 1 set of clamping bolts

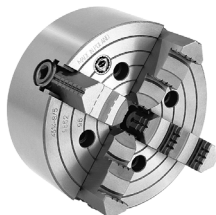
Type 4314

Chuck Size	Spindle	Thru Hole	Max RPM	Wt (lbs)	Part Number	Price
8"	A2-5	1.969	1800	38	BI-7851-0815	\$739.80
	A2-6	1.969	1800	38	BI-7851-0816	\$739.80
10"	A2-5	2.559	1500	56	BI-7851-1025	\$882.90
	A2-6	2.559	1500	56	BI-7851-1016	\$882.90
12"	A2-8	2.559	1500	56	BI-7851-1018	\$882.90
	A2-5	3.150	1200	88	BI-7851-1215	\$1,114.20
12"	A2-6	3.150	1200	88	BI-7851-1226	\$1,114.20
	A2-8	3.150	1200	88	BI-7851-1218	\$1,114.20
15-3/4"	A2-6	3.937	800	143	BI-7851-1626	\$1,645.20
	A2-8	3.937	800	143	BI-7851-1628	\$1,645.20
20"	A2-11	3.937	800	143	BI-7851-1619	\$1,645.20
	A2-11	4.921	500	251	BI-7851-2019	\$2,645.10
25"	A2-11	6.299	400	364	BI-7851-2519	\$3,435.30
32"	A2-11	6.299	300	672	BI-7851-3219	\$6,579.00

4 JAW INDEPENDENT CHUCKS

Semi-Steel Body, Type D1 Direct Mount
With Hard Solid Jaws

- Semi-steel body
- Type D1 direct mount
- Solid jaws are made of high quality carbon steel and hardened
- Designed to grip round or odd shaped work



4 JAW CHUCKS

Forged Steel Body With 2 Piece Jaws



- 2 Piece "master jaw" style jaws
- Forged steel body
- Plain back
- Designed to grip round or odd shaped work



Solid Jaw Chucks are provided with:

- 1 set of hard solid reversible jaws
- 1 self-ejecting chuck wrench
- 1 set of mounting bolts
- 1 hex key
- Eye bolts with 12" to 20" chucks

Type 4344

Chuck Size	Spindle	Thru Hole	Wt (lbs)	Part Number	Price
8"	D1-4	1.9685	37	BI-7853-0834	\$735.30
	D1-5	1.9685	37	BI-7853-0835	\$761.40
10"	D1-4	2.3622	61	BI-7853-1034	\$891.00
	D1-5	2.5591	61	BI-7853-1035	\$910.80
12"	D1-6	2.5591	61	BI-7853-1036	\$910.80
	D1-6	3.1496	87	BI-7853-1236	\$1,157.40
12"	D1-8	3.1496	87	BI-7853-1238	\$1,197.00
	D1-6	3.937	132	BI-7853-1636	\$1,564.20
15-3/4"	D1-8	3.937	132	BI-7853-1638	\$1,564.20
	D1-11	3.937	132	BI-7853-1639	\$1,564.20
20"	D1-8	4.9213	211	BI-7853-2038	\$2,393.10
	D1-11	4.9213	211	BI-7853-2039	\$2,479.50
25"	D1-11	6.2992	364	BI-7853-2539	\$3,364.20

Chuck Dia	Thru Hole	Max RPM	Wt Lbs	Part Number	Price
6"	1.653	4600	22	BI-3841-0600P	\$772.20
8"	2.165	4000	39	BI-3841-0800P	\$959.31
10"	2.992	3500	64	BI-3841-1000P	\$1,175.95
12"	4.055	2800	111	BI-3841-1200P	\$1,723.77
16"	5.354	2000	189	BI-3841-1600P	\$2,846.25
20"	7.480	1300	322	BI-3841-2000P	\$6,534.18

Call Us Or Visit Our Website For Our Complete Selection!

MANUAL CHUCKS

FOUR JAW INDEPENDENT CHUCKS SOLID JAWS OR TOP REVERSIBLE JAWS FLATBACK

These chucks have jaws that are operated individually to allow solid gripping of oddly shaped and square work pieces. Semi-steel body.



Package Includes:
Chuck, Master Jaws,
Top Jaws, T-Wrench
& Mounting Screws

FOUR JAW INDEPENDENT CHUCKS SOLID JAWS OR TOP REVERSIBLE JAWS DIRECT MOUNT TYPE D

These chucks have jaws that are operated individually to allow solid gripping of oddly shaped and square work pieces. Semi-steel body. Chucks above 16" have 1 piece solid reversible jaws.



Package Includes:
Chuck, Master Jaws,
Top Jaws, T-Wrench
& Mounting Screws

Chuck Size	Thru Hole	Weight (lbs)	Part Number	Price
6"	1.772"	22	BT-4064	\$250.75
	1.772"	22	BT-4064R	\$312.00
8"	2.205"	35	BT-4084	\$264.00
	2.205"	35	BT-4084R	\$396.00
10"	2.953"	51	BT-4104	\$352.00
	2.953"	51	BT-4104R	\$468.00
12"	3.740"	100	BT-4124	\$484.00
	3.740"	100	BT-4124R	\$596.00
14"	3.740"	110	BT-4144	\$524.00
	3.740"	110	BT-4144R	\$684.00
16"	4.921"	139	BT-4164	\$660.00
	4.921"	139	BT-4164R	\$860.00
20"	6.300"	227	BT-4204	\$992.00
25"	7.087"	350	BT-4254	\$2,155.50
32"	8.268"	570	BT-4324	\$4,950.00
40"	10.236"	930	BT-4404	\$6,475.50

D

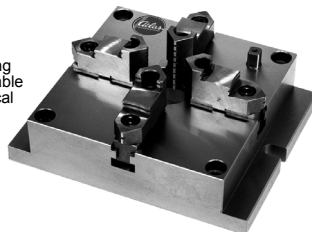
"R" Designates Top Reversible Jaws

Chuck Size	Spindle	Thru Hole	Solid Jaw Part Number	Price Each	Reversible Part Number	Price Each
6"	D1-3	1.772"	BT-4064D3	\$301.75	BT-4064D3R	\$382.50
	D1-4	2.205"	BT-4084D4	\$403.75	BT-4084D4R	\$505.75
8"	D1-6	2.205"	BT-4084D6	\$403.75	BT-4084D6R	\$505.75
	D1-5	2.953"	BT-4104D5	\$505.75	BT-4104D5R	\$663.00
10"	D1-6	2.953"	BT-4104D6	\$505.75	BT-4104D6R	\$663.00
	D1-6	3.740"	BT-4124D6	\$748.00	BT-4124D6R	\$807.50
12"	D1-8	3.740"	BT-4124D8	\$748.00	BT-4124D8R	\$807.50
	D1-6	3.740"	BT-4144D6	\$867.00	BT-4144D6R	\$1,015.75
14"	D1-8	3.740"	BT-4144D8	\$867.00	BT-4144D8R	\$1,015.75
	D1-8	4.921"	BT-4164D8	\$1,156.50	BT-4164D8R	\$1,255.50
16"	D1-11	4.921"	BT-4164D11	\$1,156.50	BT-4164D11R	\$1,255.50
	D1-8	5.354"	BT-4204D8	\$1,399.50	BT-4204D8R	\$1,552.50
20"	D1-11	6.300"	BT-4204D11	\$1,507.50	BT-4204D11R	\$1,642.50
	D1-15	6.300"	BT-4204D15	\$1,507.50	BT-4204D15R	\$1,642.50
25"	D1-11	7.087"	BT-4254D11	\$2,695.50	BT-4254D11R	\$2,857.50
	D1-15	7.087"	BT-4254D15	\$2,695.50	BT-4254D15R	\$2,857.50

4 JAW SQUARE CHUCK

Low Profile, Super Thin

- Universal scroll chuck design
- Super thin design allows greater Z-axis machining
- Designed for fast and easy positioning on worktable
- Ideal for pallet applications, standard mills, vertical machining centers, angle plates and tombstones
- Master jaw style chuck. Accepts American standard tongue and groove top jaws



3 JAW ROUND CHUCK

Low Profile, Super Thin

- Three operating pinions positioned at a 45° angle for easier operation
- Easy installation with flange type mounting
- Accuracy: .001" repeatability on duplicate parts using the nominated pinion
- Ideal for pallet applications, standard mills, vertical machining centers, angle plates and tombstones
- Master jaw style chuck. Accepts American standard tongue and groove top jaws



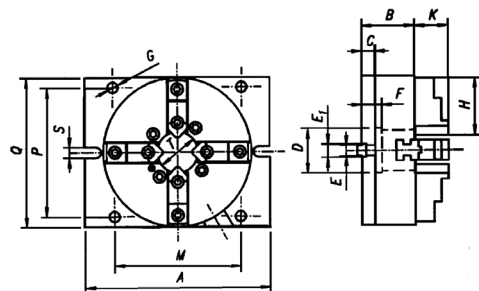
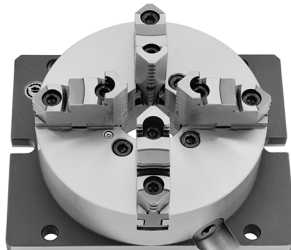
Chuck Size	Base Dimensions	Thru-hole	Weight (lbs)	Part Number	Price
6"	8.46" x 6.50"	1.57"	31	PBA-MCA6	\$1,075.00
8"	9.84" x 7.87"	2.17"	46	PBA-MCA8	\$1,375.00
10"	12.20" x 9.84"	2.76"	70	PBA-MCA10	\$1,795.00
12"	14.96" x 12.20"	3.94"	124	PBA-MCA12	\$2,350.00

Chuck Size	Base Dia.	Thru-hole	Weight (lbs)	Part Number	Price
6"	8.66"	1.77"	24	PBA-NBK6	\$1,150.00
8"	10.63"	2.36"	40	PBA-NBK8	\$1,475.00
10"	12.40"	3.15"	62	PBA-NBK10	\$1,875.00
12"	14.57"	4.13"	95	PBA-NBK12	\$1,995.00

4 JAW MACHINE FIXTURE

Low Profile, Self-Centering Forged Steel Body

- Forged steel body with rectangular base
- Ideal for all types of milling, grinding, drilling and tapping operations on vertical and horizontal CNC machines as well as conventional milling and grinding machines
- All surfaces are hardened and precision ground, square and parallel to an accuracy of 0.0008"
- Repeatability within 0.0004" TIR
- Ideal for pallet applications
- Comes with 1 set of two-piece reversible jaws (hard top and hard master jaws), 1 ratchet wrench, 1 angled wrench and 1 set of 2 mounting bolts with T-nuts and two T-slot keys



Dia	A	Q	B	K	C	D	E	E1	F	G	H	M=P	S	T	Clamping Range		Part Number	Price
															OD	ID		
6"	8.46	6.50	2.48	1.69	.709	1.772	.551	.709	.980	.433	2.64	5.669	.55	1.65	.1181-6.30	1.65-5.75	BI-7640-006	\$1,420.20
8"	9.84	7.87	2.84	1.77	.709	2.362	.551	.709	1.06	.551	3.15	6.850	.55	2.17	.1575-7.48	1.97-7.84	BI-7640-008	\$1,795.50
10"	12.2	9.84	3.27	2.05	.846	3.150	.709	.709	1.25	.630	3.74	8.583	.71	2.99	.1968-9.84	2.28-9.25	BI-7640-010	\$2,076.30

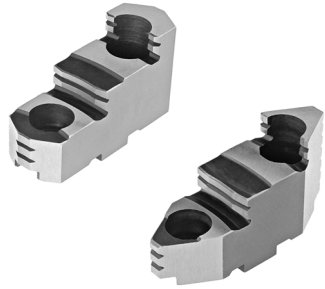
Call Us Today For All Of Your Machine Tool Needs!

REPLACEMENT PARTS FOR BISON CHUCKS



HARD TOP JAWS-OEM STYLE

American Standard Tongue & Groove Jaws

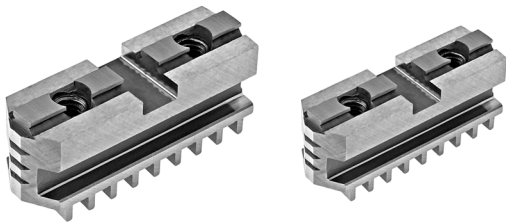


Chuck Dia	Groove Width	Tongue Width	OAL	Height	3-Jaw Chucks		4-Jaw Chucks		6-Jaw Chucks	
					Part Number	Price Per Set	Part Number	Price Per Set	Part Number	Price Per Set
5"	0.313	0.500	2.205	1.516	TG-50HJ2-BI	\$188.10	TG-50HJ2-4-BI	\$300.60	TG-50HJ2-6-BI	\$396.90
6"	0.313	0.500	2.638	1.634	TG-60HJ2-BI	\$230.40	TG-60HJ2-4-BI	\$306.90	TG-60HJ2-6-BI	\$452.70
8"	0.313	0.500	3.347	1.713	TG-80HJ2-BI	\$232.20	TG-80HJ2-4-BI	\$364.50	TG-80HJ2-6-BI	\$548.10
10"	0.500	0.750	3.740	2.023	TG-100HJ2-BI	\$271.80	TG-100HJ2-4-BI	\$380.70	TG-100HJ2-6-BI	\$644.40
12"	0.500	0.750	4.331	2.165	TG-120HJ2-BI	\$334.80	TG-120HJ2-4-BI	\$468.00	TG-120HJ2-6-BI	\$792.00
15-3/4"	0.500	0.750	5.000	2.539	TG-150HJ2-BI	\$456.30	TG-150HJ2-4-BI	\$639.00	TG-150HJ2-6-BI	\$1,141.20
20"	0.500	0.750	5.000	2.933	TG-200HJ2-BI	\$761.40	TG-200HJ2-4-BI	\$1,055.70	TG-200HJ2-6-BI	\$2,153.70
25"	0.500	0.750	5.000	3.228	TG-250HJ2-BI	\$907.20	TG-250HJ2-4-BI	\$1,269.90	TG-250HJ2-6-BI	\$2,100.60
32"	0.500	0.750	5.000	3.228	TG-250HJ2-BI	\$907.20	TG-250HJ2-4-BI	\$1,269.90	-	-

HARD MASTER JAWS

FOR 2, 3 & 4-JAW SELF-CENTERING SCROLL CHUCKS

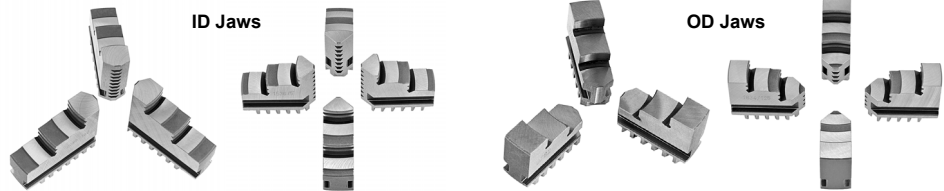
American Standard Tongue & Groove Jaws



Chuck Dia	2-Jaw Chucks		3-Jaw Chucks		4-Jaw Chucks	
	Part Number	Price	Part Number	Price	Part Number	Price
5"	-	-	BI-7885-305	\$152.10	BI-7885-405	\$216.00
6"	BI-7885-206	\$122.40	BI-7885-306	\$157.50	BI-7885-406	\$239.40
8"	BI-7885-208	\$148.50	BI-7885-308	\$172.80	BI-7885-408	\$261.90
10"	BI-7885-210	\$184.50	BI-7885-310	\$221.40	BI-7885-410	\$320.40
12"	BI-7885-212	\$239.40	BI-7885-312	\$306.90	BI-7885-412	\$477.00
15-3/4"	BI-7885-216	\$270.00	BI-7885-316	\$405.00	BI-7885-416	\$601.20
20"	-	-	BI-7885-320	\$743.40	BI-7885-420	\$1,183.50
25"	-	-	BI-7885-325	\$924.30	BI-7885-425	\$1,449.90
32"	-	-	BI-7885-332	\$1,246.50	-	-

ID & OD HARD SOLID JAWS

FOR 3 & 4-JAW SCROLL CHUCKS



Chuck Dia	Height	OAL	ID Solid Hard Jaws				OD Solid Hard Jaws			
			For 3-Jaw Chucks	Price Per Set	For 4-Jaw Chucks	Price Per Set	For 3-Jaw Chucks	Price Per Set	For 4-Jaw Chucks	Price Per Set
5"	1.575	2.0079	BI-7881-305	\$128.70	BI-7881-405	\$203.40	BI-7880-305	\$128.70	BI-7880-405	\$203.40
6"	2.087	2.7559	BI-7881-306	\$147.60	BI-7881-406	\$233.10	BI-7880-306	\$147.60	BI-7880-406	\$233.10
8"	2.126	3.3459	BI-7881-308	\$156.60	BI-7881-408	\$248.40	BI-7880-308	\$156.60	BI-7880-408	\$248.40
10"	2.480	4.1339	BI-7881-310	\$194.40	BI-7881-410	\$306.90	BI-7880-310	\$194.40	BI-7880-410	\$306.90
12"	2.953	4.9213	BI-7881-312	\$319.50	BI-7881-412	\$504.00	BI-7880-312	\$319.50	BI-7880-412	\$504.00
15-3/4"	3.622	5.7087	BI-7881-316	\$393.30	BI-7881-416	\$558.00	BI-7880-316	\$393.30	BI-7880-416	\$558.00
20"	3.937	7.0866	BI-7881-320	\$962.10	BI-7881-420	\$1,283.40	BI-7880-320	\$962.10	BI-7880-420	\$1,193.40
25"	4.331	8.8583	BI-7881-325	\$1,154.70	BI-7881-425	\$1,485.00	BI-7880-325	\$1,154.70	BI-7880-425	\$1,431.90

SPARE PARTS FOR 2, 3 & 4-JAW CHUCKS

For Bison Chucks With Semi-Steel Body Only



Chuck Dia	Scroll			Pinion			Pinion Screw		Chuck Wrenches			
	OD	Part Number	Price	OAL	Part Number	Price	Part Number	Price	Square Size	Length	Part Number	Price
5"	3.70	BI-7887-305	\$179.10	1.63	BI-7886-305	\$40.50	BI-7888-906	\$4.50	0.354	3.15	BI-7889-005	\$42.30
6"	4.88	BI-7887-306	\$212.40	1.87	BI-7886-306	\$42.30	BI-7888-906	\$4.50	0.433	3.94	BI-7889-008	\$45.00
8"	6.26	BI-7887-308	\$260.10	2.30	BI-7886-308	\$51.30	BI-7888-910	\$9.00	0.433	3.94	BI-7889-008	\$45.00
10"	7.84	BI-7887-310	\$351.00	2.72	BI-7886-310	\$63.00	BI-7888-910	\$9.00	0.551	4.72	BI-7889-012	\$55.80
12"	10.10	BI-7887-312	\$465.30	3.60	BI-7886-312	\$75.60	BI-7888-910	\$9.00	0.551	4.72	BI-7889-012	\$55.80
15-3/4"	12.90	BI-7887-316	\$1,141.20	4.41	BI-7886-316	\$107.10	BI-7888-920	\$11.70	0.669	5.51	BI-7889-016	\$81.00
20"	16.40	BI-7887-320	\$2,459.70	5.30	BI-7886-320	\$311.40	BI-7888-920	\$11.70	0.748	5.51	BI-7889-025	\$124.20

Call Us Or Visit Our Website For Our Complete Selection!

OIL COUNTRY CHUCKS

4 JAW INDEPENDENT CHUCKS

Extra Heavy Duty-Forged Steel Body
Extra Large Thru-Hole

- Forged steel body
- Two-piece "master jaw" style
- Includes mounting bolts, wrench eye bolts and 2 Allen keys



Chuck Size	Mount	Thru Hole	Max RPM	Wt (lbs)	Part Number	Price
15-3/4"	A2-8	5.30	1200	320	BI-7859-1620	\$5,661.00
	A2-11	6.50	1200	302	BI-7859-1625	\$5,661.00
	D1-8	5.30	1200	300	BI-7859-6150	\$5,796.00
	D1-11	6.50	1200	282	BI-7859-6153	\$5,805.00
20"	A2-11	6.50	1000	450	BI-7859-2033	\$6,912.00
	A2-15	8.00	1000	414	BI-7859-2043	\$6,912.00
	D1-8	5.30	1000	468	BI-7859-6200	\$7,524.00
25"	D1-11	6.50	1000	452	BI-7859-6203	\$7,128.00
	A2-15	10.50	850	684	BI-7859-2543	\$10,593.00
28"	A2-20	12.55	850	662	BI-7859-2555	\$10,593.00
	A2-15	10.50	750	915	BI-7859-2845	\$15,363.00
32"	A2-20	12.55	750	873	BI-7859-2853	\$15,363.00
	D1-11	7.50	750	993	BI-7859-6839	\$15,363.00
	A2-15	10.50	750	1290	BI-7859-3243	\$17,631.00
40"	A2-20	12.55	600	1246	BI-7859-3255	\$17,631.00
	A2-20	14.5	600	1246	BI-7859-3257	\$17,631.00
	A2-28	20.86	430	1687	BI-7859-4063	\$29,079.00

3-JAW OIL COUNTRY CHUCKS

Self-Centering, Extra Heavy Duty

- Two-piece master jaw style chuck
- Forged steel body
- Large thru-hole
- Direct and indirect mounting
- Includes two-piece reversible hard jaws, wrench, mounting bolts and eye bolt



Chuck Size	Mount	Thru Hole	Max RPM	Wt (lbs)	Part Number	Price
15-3/4"	A2-8*	5.34	1400	336	BI-7825-1608	\$8,226.00
	A2-11*	5.12	1400	336	BI-7825-1611	\$8,226.00
20"	A2-11	7.48	1000	560	BI-7825-2011	\$11,907.00
	A2-15*	8.00	1000	530	BI-7825-2025	\$12,672.00
25"	A2-15	10.75	850	615	BI-7825-2515	\$17,838.00
	A2-20*	12.55	850	555	BI-7825-2520	\$18,090.00
32"	A2-15	10.75	600	1108	BI-7825-3215	\$25,974.00
	A2-20	12.55	600	1080	BI-7825-3220	\$25,974.00

*Indirect mount. All indirect mount chucks come with fully machined backplate.

LARGE BORE OIL COUNTRY CHUCKS

25" Diameter, 3 & 4 Reversible Jaws
Extra Large Thru-hole

- Solid or semi steel body available
- Extra large thru hole
- Scroll and master jaws ground and hardened

Package Includes:
Chuck, Master Jaws,
Top Jaws, T-Wrench
& Mounting Screws



D

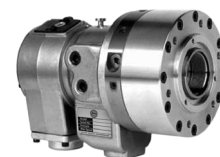


Chuck Size	Thru Hole	Spindle	Body Type	Weight (lbs)	Part Number	Price
3 JAW CHUCKS						
25"	7.500"	A2-11	Semi-Steel	530	BT-2-253A211R	\$7,375.00
25"	10.512"	A2-15	Steel	678	BT-1-253A215R	\$7,375.00
25"	12.52"	A1-20	Steel	618	BT-1-253A120R	\$7,375.00
4 JAW CHUCKS						
25"	7.500"	A2-11	Semi-Steel	385	BT-2-254A211R	\$4,165.00
25"	10.512"	A2-15	Steel	569	BT-1-254A215R	\$4,165.00
25"	12.520"	A2-20	Steel	506	BT-1-254A220R	\$4,165.00



COMPLETE WORKHOLDING SOLUTIONS!

- Manual and CNC chucks
- Collet chucks
- Replacement parts
- Swing lock chucks
- Adapter plates
- Threaded drawnuts-standard and extended length
- Hydraulic cylinders



PLEASE CALL FOR MORE INFORMATION!

Call Us Today For All Of Your Machine Tool Needs!