

TOOLING COMPONENTS/T-SLOT NUTS

MACHINISTS' CLAMP KITS STEEL STEP BLOCK & CLAMP SETS 52 Piece Clamp Kit For Bridgeport Type Mills



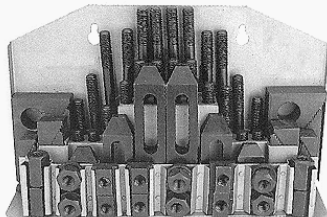
- Includes:**
- 4 Coupling Nuts
 - 6 Flange Nuts
 - 6 T-Slot Nuts
 - 1 T-Slot Cleaner
 - 24 Studs - 4 Each of:
3", 4", 5", 6", 7" and 8" long
 - 6 Step Blocks
 - 6 Serrated End Clamps
 - 1 Holder
- Bridgeport type milling machines use part number **TECO-20402**



| Table T-Slot Size | Stud Size | Weight (lbs/kit) | Part Number | Price Each |
|----------------------------------|-----------|------------------|-------------|------------|
| With 1" Thick Step Blocks | | | | |
| 7/16 | 3/8-16 | 18.5 | TECO-20412 | \$278.00 |
| 1/2 | 3/8-16 | 18.5 | TECO-20413 | \$272.00 |
| 9/16 | 3/8-16 | 18.5 | TECO-20414 | \$278.00 |
| 9/16 | 1/2-13 | 24 | TECO-20401 | \$286.00 |
| 5/8 | 1/2-13 | 24 | TECO-20402 | \$252.00 |
| 11/16 | 1/2-13 | 24 | TECO-20403 | \$275.00 |
| 5/8 | 1/2-13 | 24 | TECO-20404 | \$278.00 |
| 11/16 | 5/8-11 | 29 | TECO-20415 | \$355.00 |
| 3/4 | 5/8-11 | 29 | TECO-20416 | \$356.00 |
| 13/16 | 5/8-11 | 29 | TECO-20417 | \$371.00 |

MACHINIST CLAMP SET

BEST VALUE



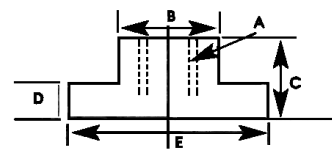
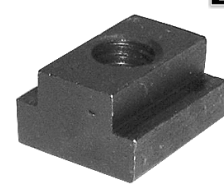
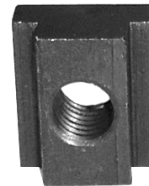
- Contents:**
- 24 Studs- 3", 4", 5", 6", 7" & 8" long
 - 4 Coupling Units
 - 6 Flange Nuts
 - 6 Forged Steel step clamps
 - 6 T-Nuts
 - 12 Steel Step Blocks
 - Also includes T-slot cleaner, wrench and wall rack
 - **TECO-20402PL** made in USA!

Fits all Bridgeport® type milling machines. This clamping set is made from powdered steel for strength and longer tool life, with all parts heat-treated.

| No. Of Pieces | Description | Part Number | Price Each |
|---------------|--------------------------|--------------|------------|
| 58 | 5/8" slot x 1/2-13 bolt | CK-58 | \$69.00 |
| | 5/8" slot x 1/2-13 bolt | TECO-20402PL | \$89.99 |
| | 1/2" slot x 3/8"-16 bolt | CK-58-3/8 | \$64.00 |
| | 3/4" slot x 5/8"-11 bolt | CK-58-5/8 | \$107.00 |

T-SLOT NUTS

BEST VALUE



- FEATURES:**
- Heat treated steel
 - Black oxide finish to ensure long life
 - Case Hardened

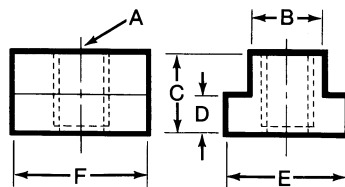
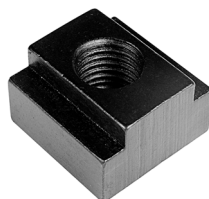
| B | A Thread | C | D | E | Length | Part Number | Price Each |
|-----|----------|-----|-------|-------|--------|---------------|------------|
| 3/8 | 5/16-18 | 1/2 | 3/16 | 5/8 | 7/8 | A-900-0002-01 | \$1.48 |
| 1/2 | 3/8-16 | 1/2 | 9/32 | 7/8 | 7/8 | A-900-0002-03 | \$1.48 |
| 5/8 | 1/2-13 | 5/8 | 11/32 | 1 | 1-1/8 | A-900-0002-05 | \$1.70 |
| 3/4 | 5/8-11 | 3/4 | 15/32 | 1-1/4 | 1-1/4 | A-900-0002-07 | \$2.01 |
| 7/8 | 3/4-10 | 1 | 9/16 | 1-1/2 | 1-1/2 | A-900-0002-09 | \$2.50 |
| 1 | 7/8-9 | 1 | 5/8 | 1-5/8 | 1-3/4 | A-900-0002-10 | \$3.00 |

T-SLOT NUTS



FEATURES:

- Black Oxide Finish
- Case Hardened- 1018 Material
- The last thread is incomplete on T-Slot Nuts to prevent the stud from turning through the bottom of the nut.
- Many sizes conform to TCMIA standards
- Special sizes quoted upon request
- Tapped through T-Slot Nuts are also available
- *T-Slot Nuts are undersized to fit machine table slot.
- ** English T-Slot Nut will fit this size metric machine T-Slot.



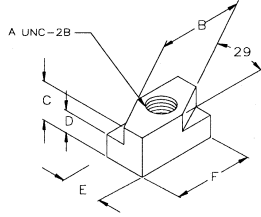
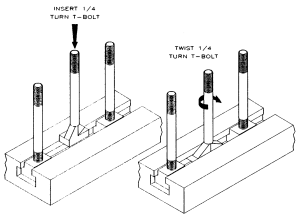
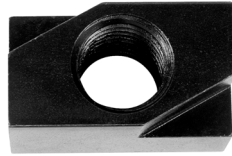
| Thread A | English* Table Slot B | Metric** Table Slot | C | D | E | F | Part Number | Price Each |
|----------|-----------------------|---------------------|-------|-------|-------|-------|-------------|------------|
| 1/4-20 | 5/16 | 8MM | 1/4 | 3/16 | 9/16 | 9/16 | TECO-41401 | \$3.40 |
| | 3/8 | 10MM | 3/8 | 15/64 | 9/16 | 9/16 | TECO-41402 | \$3.46 |
| 5/16-18 | 3/8 | 10MM | 3/8 | 1/4 | 5/8 | 7/8 | TECO-41403 | \$2.83 |
| | 7/16 | 12MM | 1/2 | 7/32 | 11/16 | 7/8 | TECO-41433 | \$2.90 |
| 3/8-16 | 1/2 | 13MM | 1/2 | 9/32 | 7/8 | 7/8 | TECO-41434 | \$2.90 |
| | 7/16 | 12MM | 1/2 | 7/32 | 11/16 | 7/8 | TECO-41404 | \$2.83 |
| 1/2-13 | 1/2 | 12MM | 1/2 | 9/32 | 7/8 | 7/8 | TECO-41405 | \$2.83 |
| | 9/16 | 15MM | 5/8 | 11/32 | 7/8 | 1-1/8 | TECO-41406 | \$3.27 |
| | 5/8 | 16MM | 3/4 | 3/8 | 1-1/8 | 1-1/8 | TECO-41409 | \$3.19 |
| 5/8-11 | 5/8 | 16MM | 3/4 | 3/8 | 1-1/8 | 1-1/8 | TECO-41410 | \$3.63 |
| | 11/16 | 18MM | 3/4 | 7/16 | 1-1/8 | 1-1/4 | TECO-41411 | \$4.80 |
| | 3/4 | 20MM | 3/4 | 15/32 | 1-1/4 | 1-1/4 | TECO-41412 | \$3.89 |
| | 13/16 | 21MM | 1 | 9/16 | 1-1/4 | 1-1/2 | TECO-41413 | \$5.31 |
| 3/4-10 | 11/16 | 18MM | 3/4 | 7/16 | 1-1/8 | 1-1/4 | TECO-41415 | \$4.11 |
| | 3/4 | 20MM | 3/4 | 15/32 | 1-1/4 | 1-1/4 | TECO-41416 | \$4.31 |
| | 13/16 | 21MM | 1 | 9/16 | 1-1/4 | 1-1/2 | TECO-41417 | \$6.22 |
| | 7/8 | 23MM | 1 | 9/16 | 1-1/2 | 1-1/2 | TECO-41418 | \$6.86 |
| | 1 | 26MM | 1 | 5/8 | 1-5/8 | 1-3/4 | TECO-41419 | \$7.44 |
| 1-1/16 | 1 | 26MM | 1-1/2 | 3/4 | 1-3/4 | 1-3/4 | TECO-41420 | \$8.44 |
| | 1 | 26MM | 1-1/2 | 3/4 | 1-3/4 | 1-3/4 | TECO-41421 | \$12.66 |
| | | | 1-1/8 | 11/16 | 1-5/8 | 2 | TECO-41422 | \$9.89 |

Call Us Today For All Of Your Machine Tool Needs!

QUARTER TURN T-SLOT NUTS

FEATURES:

- Sintered Metal
- The last thread is incomplete on T-Slot Nuts to prevent the stud from turning through the bottom of the nut.
- Special sizes quoted upon request
- *Quarter Turn T-Slot Nuts are undersized to fit machine table slot.



Full Line Available!
Please call for more information.

Prices Reduced!



| Thread A | Table Slot B | Metric* Table Slot | C | D | E | F | Part Number | Price Each |
|----------|--------------|--------------------|-----|-------|-------|------|-------------|------------|
| 3/8-16 | 7/16 | 12MM | 1/2 | 0.208 | 0.438 | 0.75 | TECO-41450 | \$3.54 |
| | 1/2 | 12MM | 1/2 | 0.271 | 0.500 | 1 | TECO-41451 | \$3.54 |
| 1/2-13 | 9/16 | 15MM | 5/8 | 0.333 | 0.563 | 0.94 | TECO-41452 | \$3.96 |
| | 5/8 | 16MM | 5/8 | 0.333 | 0.625 | 1.25 | TECO-41453 | \$4.38 |
| 5/8-11 | 11/16 | 18MM | 3/4 | 0.427 | 0.688 | 1.38 | TECO-41454 | \$4.86 |
| | 3/4 | 20MM | 3/4 | 0.458 | 0.750 | 1.50 | TECO-41455 | \$5.15 |
| 1/2-13 | 11/16 | 18MM | 3/4 | 0.427 | 0.688 | 1.3 | TECO-41456 | \$5.72 |
| 3/4-10 | 1 | 26MM | 1 | 0.615 | 1 | 1.75 | TECO-41457 | \$6.22 |

T-NUT & STUD KITS

Kit Contains:

- 4 Coupling Nuts
 - 4 Flange Nuts
 - 4 T-Slot Nuts
 - 1 T-Slot Cleaner
 - 24 Studs - 4 ea. of 3", 4", 5", 6", 7" and 8" long
- Versatility expanded when used with Step Block & Clamp Kits.

Prices Reduced!



| Table T-Slot Size | Stud Size | Wt. (lbs/kit) | Part Number | Price Each |
|-------------------|-----------|---------------|-------------|------------|
| 3/8 | 5/16-18 | 8 | TECO-20601 | \$82.90 |
| 7/16 | 3/8-16 | 8 | TECO-20602 | \$84.50 |
| 1/2 | 3/8-16 | 8 | TECO-20603 | \$87.70 |
| 9/16 | 3/8-16 | 8 | TECO-20604 | \$89.50 |
| 9/16 | 1/2-13 | 12 | TECO-20605 | \$95.75 |
| 5/8 | 1/2-13 | 12 | TECO-20606 | \$99.00 |
| 11/16 | 1/2-13 | 13 | TECO-20607 | \$100.75 |
| 11/16 | 5/8-11 | 16.3 | TECO-20608 | \$116.00 |
| 3/4 | 5/8-11 | 16.3 | TECO-20609 | \$129.25 |
| 13/16 | 5/8-11 | 16.3 | TECO-20610 | \$140.30 |
| 13/16 | 3/4-10 | 24 | TECO-20611 | \$186.50 |
| 7/8 | 3/4-10 | 24 | TECO-20612 | \$189.80 |
| 1 | 3/4-10 | 24 | TECO-20613 | \$194.50 |
| 1-1/16 | 3/4-10 | 25 | TECO-20618 | \$360.00 |



Full Line Available!
Please call for more information.

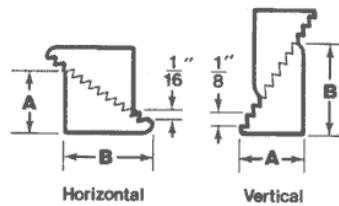
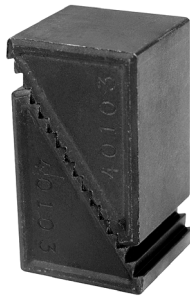
STEP BLOCK KITS

STEEL

FEATURES:

- Larger sizes have chamfered holes for ease of use.
- Blocks work in conjunction with Serrated End clamps.
- Two halves = One Block

Prices Reduced!



| Height Adj. Range | A | B | Part Number | Price Each |
|--------------------------------------|---------|---------|-------------|------------|
| With 1" Step Blocks | | | | |
| 3/4 to 1-5/8 | 1-1/16 | 11/16 | TECO-40102 | \$6.04 |
| 1-1/8 to 2-1/2 | 1-39/64 | 1-1/16 | TECO-40103 | \$8.64 |
| 2-1/2 to 6 | 3-3/4 | 2-15/32 | TECO-40104* | \$20.88 |
| With 1 1/2" Thick Step Blocks | | | | |
| 1-3/4 to 4 | 2-17/32 | 1-43/64 | TECO-40105 | \$14.95 |
| 2-1/2 to 6 | 3-3/4 | 2-15/32 | TECO-40106* | \$29.93 |
| 3-1/2 to 9 | 5-21/64 | 3-7/16 | TECO-40107* | \$53.40 |
| With 2" Thick Step Blocks | | | | |
| 1-3/4 to 4 | 2-17/32 | 1-43/64 | TECO-40108 | \$24.83 |
| 2-1/2 to 6 | 3-3/4 | 2-15/32 | TECO-40109* | \$37.72 |
| 3-1/2 to 9 | 5-21/64 | 3-7/16 | TECO-40110* | \$69.25 |
| 4-7/8 to 10-1/2 | 7-3/8 | 4-3/4 | TECO-40111 | \$179.26 |

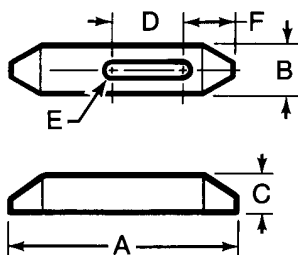
*Indicates chamfered holes



PLAIN CLAMPS

FEATURES:

- Tapered nose allows clamping in small areas.
- Case Hardened
- Black Oxide Finish
- Material: 1018 Steel



| A | B | C | D | Stud Size E | F | Part Number | Price Each |
|-------|-------|-------|---------|--------------|---------|-------------|------------|
| 2-1/2 | 1 | 1/2 | 13/16 | 5/16 and 3/8 | 27/32 | TECO-30401 | \$10.80 |
| 4 | 1 | 5/8 | 1-7/16 | 5/16 and 3/8 | 1-1/32 | TECO-30402 | \$14.50 |
| 6 | 1-1/8 | 3/4 | 2-3/16 | 5/16 and 3/8 | 1-5/32 | TECO-30403 | \$18.78 |
| 2-1/2 | 1-1/8 | 1/2 | 11/16 | 1/2 | 29/32 | TECO-30404 | \$12.59 |
| 4 | 1-1/4 | 3/4 | 1-5/16 | 1/2 | 1-5/32 | TECO-30405 | \$16.87 |
| 6 | 1-1/4 | 7/8 | 2-1/16 | 1/2 | 1-9/32 | TECO-30406 | \$20.81 |
| 2-1/2 | 1-1/4 | 5/8 | 9/16 | 5/8 | 31/32 | TECO-30407 | \$14.68 |
| 4 | 1-1/2 | 3/4 | 1-3/16 | 5/8 | 1-9/32 | TECO-30408 | \$18.44 |
| 6 | 1-1/2 | 7/8 | 1-15/16 | 5/8 | 1-13/32 | TECO-30409 | \$23.78 |
| 4 | 1-1/2 | 3/4 | 1-1/16 | 3/4 | 1-11/32 | TECO-30410 | \$19.75 |
| 6 | 1-1/2 | 1 | 1-15/16 | 3/4 | 1-15/32 | TECO-30411 | \$29.70 |
| 8 | 1-3/4 | 1-1/8 | 2-3/16 | 3/4 | 1-29/32 | TECO-30412 | \$39.90 |

Call Us Or Visit Our Website For Our Complete Selection!

LATHE CHUCKS
LIVE CENTERS

WISE JAWS
WISE ACCESSORIES

STRAIGHT SHANK
COLLET HOLDERS

TAP HOLDERS
DRILL CHUCKS

CARBIDE INSERTS
THREADING/GROOVING

CUTTING TOOLS
MACHINERY

PRECISION TOOLS
DEBURRING

COOLANT/FLUIDS
TOOL STORAGE

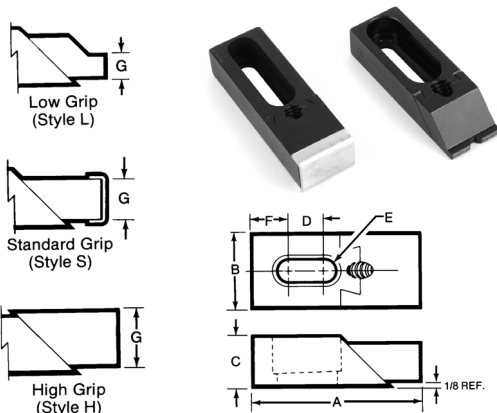
TOOLING COMPONENTS

NUZZLER® EDGE CLAMPS

FEATURES:

- Clamp Material: 1018 Steel
- Black Oxide Finish
- Edge Clamps feature a double action, adjustable nose which exerts clamping pressures both downward and inward through a 45 degree angle.
- Noses have serrations for better gripping of non-finished or semi-finished workpieces.
- Tapered slots prevent clamp from sliding off the workpiece during tightening.
- Length "A" is calculated with nose raised 1/8".
- The Low Profile Nose provides a greater machining clearance.
- Clamp Washer is included with each Edge Clamp.

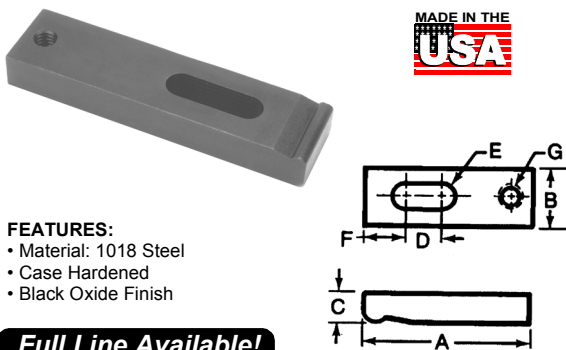
Prices Reduced!



| A | B | C | D | E | F | G | Wrench Size | Nose Style | Part Number | Price Each |
|---------|-------|-----|--------|------|-------|-----|-------------|------------|-------------|------------|
| 1-7/8 | 1 | 5/8 | 1/4 | 5/16 | 13/32 | 1/8 | 5/32 | L | TECO-33817 | \$52.14 |
| | | | | | | 5/8 | 5/32 | S | TECO-33818 | \$54.11 |
| 2-3/8 | 1 | 5/8 | 3/4 | 5/16 | 5/16 | 1/8 | 5/32 | L | TECO-33819 | \$54.11 |
| | | | | | | 5/8 | 5/32 | S | TECO-33820 | \$59.26 |
| 2-7/8 | 1 | 5/8 | 1-1/4 | 5/16 | 5/16 | 1/8 | 5/32 | L | TECO-33821 | \$57.48 |
| | | | | | | 5/8 | 5/32 | S | TECO-33822 | \$60.91 |
| 2-15/16 | 1-1/4 | 5/8 | 3/8 | 3/8 | 7/16 | 1/4 | 3/16 | L | TECO-33801 | \$53.40 |
| | | | | | | 5/8 | 3/16 | S | TECO-33802 | \$57.48 |
| 2-3/4 | 1-1/4 | 5/8 | 13/16 | 3/8 | 1/2 | 1/4 | 3/16 | L | TECO-33890 | \$57.48 |
| | | | | | | 5/8 | 3/16 | S | TECO-33891 | \$60.91 |
| 3-5/16 | 1-1/2 | 3/4 | 3/4 | 1/2 | 11/16 | 3/8 | 1/4 | L | TECO-33805 | \$60.71 |
| | | | | | | 3/4 | 1/4 | S | TECO-33806 | \$65.12 |
| | | | 5/8 | 5/8 | 11/16 | 3/8 | 1/4 | L | TECO-33710 | \$61.88 |
| | | | | | | 3/4 | 1/4 | S | TECO-33711 | \$65.12 |
| 3-7/8 | 1-1/2 | 7/8 | 1-1/4 | 1/2 | 1/2 | 1/4 | 1/4 | L | TECO-33823 | \$57.48 |
| | | | | | | 7/8 | 1/4 | S | TECO-33824 | \$62.22 |
| | | | | 5/8 | 1/2 | 1/4 | 1/4 | L | TECO-33714 | \$57.48 |
| | | | | | | 7/8 | 1/4 | S | TECO-33715 | \$62.22 |
| 4-1/8 | 1-1/4 | 5/8 | 2 | 3/8 | 11/16 | 1/4 | 3/16 | L | TECO-33803 | \$59.26 |
| | | | | | | 5/8 | 3/16 | S | TECO-33804 | \$62.80 |
| 4-11/16 | 1-1/4 | 5/8 | 2-3/16 | 3/8 | 15/16 | 1/4 | 3/16 | L | TECO-33892 | \$60.91 |
| | | | | | | 5/8 | 3/16 | S | TECO-33893 | \$64.19 |
| 5-3/16 | 1-1/2 | 3/4 | 2-1/2 | 1/2 | 5/8 | 3/8 | 1/4 | L | TECO-33807 | \$63.86 |
| | | | | 5/8 | 5/8 | 3/4 | 1/4 | S | TECO-33808 | \$67.09 |
| | | | | | | 3/4 | 1/4 | S | TECO-33713 | \$67.09 |

TAPPED END CLAMPS

Prices Reduced!

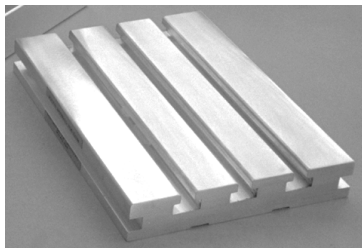


- FEATURES:**
- Material: 1018 Steel
 - Case Hardened
 - Black Oxide Finish

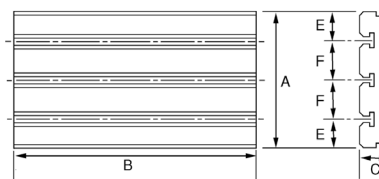
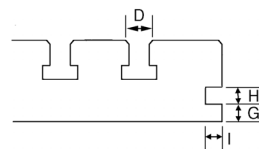
Full Line Available!
Please call for more information.

| A | B | C | D | Stud Size E | F | G | Part Number | Price Each |
|-------|-------|-----|-------|-------------|-------|---------|-------------|------------|
| 2 | 5/8 | 3/8 | 1/2 | 1/4 | 7/16 | 1/4-20 | TECO-30902 | \$10.80 |
| 2-1/2 | 5/8 | 3/8 | 1/2 | 1/4 | 9/16 | 1/4-20 | TECO-30903 | \$11.60 |
| 2-3/4 | 1 | 1/2 | 7/16 | 5/16 | 13/16 | 5/16-18 | TECO-30905 | \$13.12 |
| 3-1/4 | 1 | 1/2 | 13/16 | 5/16 | 7/8 | 5/16-18 | TECO-30906 | \$13.44 |
| 4 | 1 | 1/2 | 7/8 | 5/16 | 15/16 | 5/16-18 | TECO-30907 | \$14.24 |
| 3 | 1-1/4 | 5/8 | 3/4 | 3/8 | 9/16 | 3/8-16 | TECO-30908 | \$14.69 |
| 4 | 1-1/4 | 5/8 | 1 | 3/8 | 3/4 | 3/8-16 | TECO-30909 | \$14.83 |
| 5 | 1-1/4 | 5/8 | 1-1/2 | 3/8 | 3/4 | 3/8-16 | TECO-30910 | \$16.60 |
| 4 | 1-1/4 | 5/8 | 1 | 1/2 | 3/4 | 1/2-13 | TECO-30912 | \$16.87 |
| 4-1/2 | 1-1/4 | 5/8 | 1-1/2 | 1/2 | 13/16 | 1/2-13 | TECO-30913 | \$16.99 |
| 5 | 1-1/4 | 5/8 | 1-1/2 | 1/2 | 1-1/4 | 1/2-13 | TECO-30914 | \$17.26 |
| 6 | 1-1/4 | 5/8 | 1-1/2 | 1/2 | 2-1/4 | 1/2-13 | TECO-30916 | \$19.22 |

ALUMINUM SUB PLATES AND MOUNTING CLAMPS



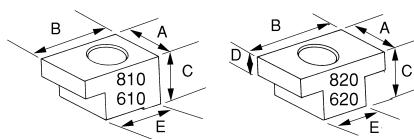
Extruded aluminum sub plates are available in standard sizes as well as special lengths. Plates up to 24" long are machined top and bottom to .005 flatness and parallelism per foot.



| A x B x C | D | Slots | E | F | G | H | I | Part Number | Price Each |
|-------------------|-----|-------|------|------|-----|-----|-----|-------------|------------|
| 9.0 x 13.0 x 1.48 | 5/8 | 3 | 2.00 | 2.50 | .50 | .50 | .50 | MITEE-22913 | \$218.03 |
| 9.0 x 18.0 x 1.48 | 5/8 | 3 | 2.00 | 2.50 | .50 | .50 | .50 | MITEE-22918 | \$303.72 |

MOUNTING CLAMPS

Clamps for mounting sub plates and many types of vises.



| Size | A | B | C | D | E | Part Number | Price Each |
|------|------|------|-----|-----|------|-------------|------------|
| 1/2 | 1.25 | 1.50 | .87 | .35 | 1.10 | MITEE-22810 | \$19.33 |

Call Us Today For All Of Your Machine Tool Needs!

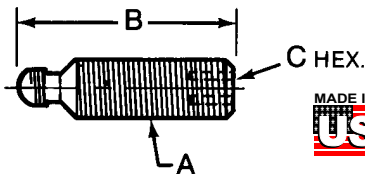
HEX SOCKET HEAD SWIVEL SCREW CLAMPS

For Use When Space Is Limited And Greater Clamping Pressures Are Needed

Full Line Available!
Please call for more information.



- FEATURES:**
- Material: 12L14 Steel on all screw parts
 - Black Oxide Finish
 - Order pads separately



Prices Reduced!

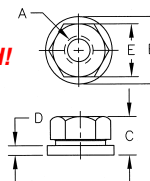
| Thread A | B | C | Part Number | Price Each | For Use W/ Small Pad | Small Pad Price | For Use W/ Large Pad | Large Pad Price |
|----------|---------|------|-------------|------------|----------------------|-----------------|----------------------|-----------------|
| 1/4-20 | 15/32 | 3/32 | TECO-31221 | \$3.15 | TECO-31501 | \$1.35 | TECO-31601 | \$1.31 |
| | 23/32 | 3/32 | TECO-31222 | \$3.15 | TECO-31501 | \$1.35 | TECO-31601 | \$1.31 |
| | 31/32 | 3/32 | TECO-31223 | \$3.15 | TECO-31501 | \$1.35 | TECO-31601 | \$1.31 |
| | 1-15/32 | 3/32 | TECO-31224 | \$3.43 | TECO-31501 | \$1.35 | TECO-31601 | \$1.31 |
| 5/16-18 | 23/32 | 5/32 | TECO-31231 | \$3.43 | TECO-31502 | \$1.48 | TECO-31602 | \$1.48 |
| | 31/32 | 5/32 | TECO-31232 | \$3.43 | TECO-31502 | \$1.48 | TECO-31602 | \$1.48 |
| | 1-15/32 | 5/32 | TECO-31233 | \$3.77 | TECO-31502 | \$1.48 | TECO-31602 | \$1.48 |
| | 1-31/32 | 5/32 | TECO-31234 | \$3.77 | TECO-31502 | \$1.48 | TECO-31602 | \$1.48 |
| 3/8-16 | 11/16 | 3/16 | TECO-31241 | \$3.93 | TECO-31503 | \$1.55 | TECO-31603 | \$1.73 |
| | 15/16 | 3/16 | TECO-31242 | \$3.93 | TECO-31503 | \$1.55 | TECO-31603 | \$1.73 |
| | 1-7/16 | 3/16 | TECO-31243 | \$4.06 | TECO-31503 | \$1.55 | TECO-31603 | \$1.73 |
| | 1-15/16 | 3/16 | TECO-31244 | \$4.33 | TECO-31503 | \$1.55 | TECO-31603 | \$1.73 |
| 1/2-13 | 15/16 | 1/4 | TECO-31252 | \$4.56 | TECO-31504 | \$1.61 | TECO-31604 | \$1.98 |
| | 1-7/16 | 1/4 | TECO-31253 | \$5.39 | TECO-31504 | \$1.61 | TECO-31604 | \$1.98 |
| | 2-15/16 | 1/4 | TECO-31255 | \$5.39 | TECO-31504 | \$1.61 | TECO-31604 | \$1.98 |

FLANGE NUTS

- FEATURES:**
- Black Oxide Finish
 - Case Hardened
 - 12L14 Material
 - Available in Coarse or Fine Threads
 - Many sizes conform to TCMAI standards
 - Special sizes quoted upon request



Prices Reduced!



UNC Flange Nuts

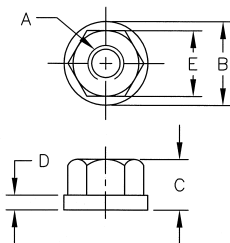
| Thread A | B | C | D | E | Part Number | Price Each |
|----------|-------|-------|------|---------|-------------|------------|
| 1/4-20 | 5/8 | 5/16 | 3/32 | 1/2 | TECO-41601 | \$2.04 |
| 5/16-18 | 3/4 | 3/8 | 1/8 | 9/16 | TECO-41602 | \$2.28 |
| 3/8-16 | 7/8 | 1/2 | 1/8 | 11/16 | TECO-41603 | \$2.42 |
| 7/16-14 | 1 | 9/16 | 5/32 | 3/4 | TECO-41604 | \$2.76 |
| 1/2-13 | 1-1/8 | 11/16 | 3/16 | 7/8 | TECO-41605 | \$2.76 |
| 5/8-11 | 1-3/8 | 13/16 | 3/16 | 1-1/16 | TECO-41606 | \$3.46 |
| 3/4-10 | 1-5/8 | 1 | 1/4 | 1-1/4 | TECO-41607 | \$5.23 |
| 7/8-9 | 1-3/4 | 1-1/8 | 1/4 | 1-7/16 | TECO-41608 | \$7.12 |
| 1-8 | 2 | 1-1/4 | 1/4 | 1-5/8 | TECO-41609 | \$8.56 |
| 1-1/4-7 | 2-1/2 | 1-1/4 | 1/4 | 1-13/16 | TECO-41611 | \$17.51 |

UNF Flange Nuts

| Thread A | B | C | D | E | Part Number | Price Each |
|----------|-------|-------|------|--------|-------------|------------|
| 1/4-28 | 5/8 | 5/16 | 3/32 | 1/2 | TECO-41701 | \$2.34 |
| 5/16-24 | 3/4 | 3/8 | 1/8 | 9/16 | TECO-41702 | \$2.42 |
| 3/8-24 | 7/8 | 1/2 | 1/8 | 11/16 | TECO-41703 | \$2.47 |
| 7/16-20 | 1 | 9/16 | 5/32 | 3/4 | TECO-41704 | \$2.83 |
| 1/2-20 | 1-1/8 | 11/16 | 3/16 | 7/8 | TECO-41705 | \$2.76 |
| 5/8-18 | 1-3/8 | 13/16 | 3/16 | 1-1/16 | TECO-41706 | \$3.68 |
| 3/4-16 | 1-5/8 | 1 | 1/4 | 1-1/4 | TECO-41707 | \$5.23 |
| 7/8-14 | 1-3/4 | 1-1/8 | 1/4 | 1-7/16 | TECO-41708 | \$7.38 |
| 1-14 | 2 | 1-1/4 | 1/4 | 1-5/8 | TECO-41709 | \$8.64 |

SWIVEL FLANGE NUTS

- FEATURES:**
- Black Oxide Finish
 - Case Hardened
 - 12L14 Material
 - Head rotates but washer remains stationary upon contact and holds rigidly without marring the workpiece.



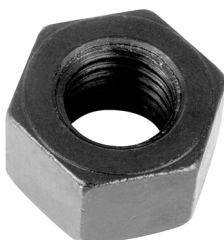
Prices Reduced!



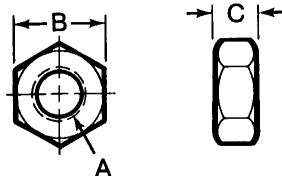
| Thread A | B | C | D | E | Part Number | Price Each |
|----------|-------|---------|-------|--------|-------------|------------|
| 1/4-20 | 5/8 | 3/8 | 1/8 | 1/2 | TECO-42001 | \$4.17 |
| 5/16-18 | 3/4 | 7/16 | 9/64 | 9/16 | TECO-42002 | \$4.38 |
| 3/8-16 | 7/8 | 17/32 | 5/32 | 11/16 | TECO-42003 | \$4.86 |
| 1/2-13 | 1-1/8 | 23/32 | 7/32 | 7/8 | TECO-42004 | \$5.59 |
| 5/8-11 | 1-3/8 | 29/32 | 1/4 | 1-1/16 | TECO-42005 | \$6.78 |
| 3/4-10 | 1-5/8 | 1-1/64 | 9/32 | 1-1/4 | TECO-42006 | \$8.41 |
| 7/8-9 | 1-3/4 | 1-1/8 | 7/16 | 1-7/16 | TECO-42007 | \$12.07 |
| 1-8 | 2 | 1-15/64 | 15/32 | 1-5/8 | TECO-42008 | \$15.16 |

HEAVY HEX NUTS

- FEATURES:**
- Black Oxide Finish
 - Case Hardened
 - High Grade Alloy Steel
 - Will outlast ordinary Hex Nuts when used in repetitive operations.



Prices Reduced!



Please See Pages 614-615 for more **TECO** Products



| Thread A | B | C | Pkg Qty | Part Number | Price Each |
|----------|--------|-------|---------|-------------|------------|
| 1/4-20 | 1/2 | 15/64 | 25 | TECO-42101 | \$0.49 |
| 5/16-18 | 9/16 | 19/64 | 25 | TECO-42102 | \$0.59 |
| 3/8-16 | 11/16 | 23/64 | 25 | TECO-42103 | \$0.61 |
| 7/16-14 | 3/4 | 27/64 | 25 | TECO-42104 | \$0.96 |
| 1/2-13 | 7/8 | 31/64 | 25 | TECO-42105 | \$0.82 |
| 5/8-11 | 1-1/16 | 39/64 | 25 | TECO-42106 | \$1.06 |
| 3/4-10 | 1-1/4 | 47/64 | 25 | TECO-42107 | \$1.63 |
| 7/8-9 | 1-7/16 | 55/64 | 25 | TECO-42108 | \$3.19 |
| 1-8 | 1-5/8 | 63/64 | 25 | TECO-42109 | \$3.32 |

Call Us Or Visit Our Website For Our Complete Selection!

LATHE CHUCKS
LIVE CENTERS
VISE ACCESSORIES
VISE JAWS
STRAIGHT SHANK COLLET HOLDERS
TAP HOLDERS
DRILL CHUCKS
CARBIDE INSERTS
THREADING/GROOVING
CUTTING TOOLS
MACHINERY
PRECISION TOOLS
DEBURRING
COOLANT/FLUIDS
TOOL STORAGE

TOOLING COMPONENTS

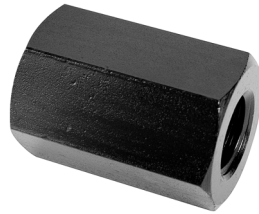
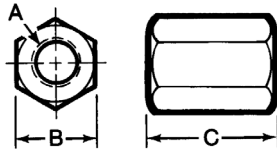
COUPLING (EXTENSION) NUTS

FEATURES:

- Black Oxide Finish
- Case Hardened
- 1117 Material
- Coupling Nuts can be used to join two or more studs for a desired length.
- Many sizes conform to TCMAI standards

Full Line Available!
Please call for more information.

Prices Reduced!



| Thread A | B | C | Pkg Qty | Part Number | Price Each |
|----------|--------|-------|---------|-------------|------------|
| 1/4-20 | 1/2 | 5/8 | 25 | TECO-41501 | \$2.54 |
| 5/16-18 | 9/16 | 7/8 | 25 | TECO-41502 | \$2.76 |
| 3/8-16 | 11/16 | 1 | 25 | TECO-41503 | \$3.04 |
| 7/16-14 | 3/4 | 1-1/4 | 25 | TECO-41504 | \$3.46 |
| 1/2-13 | 7/8 | 1-1/4 | 25 | TECO-41505 | \$3.68 |
| 5/8-11 | 1-1/16 | 1-5/8 | 25 | TECO-41506 | \$5.37 |
| 3/4-10 | 1-1/4 | 1-7/8 | 25 | TECO-41507 | \$7.44 |
| 7/8-9 | 1-7/16 | 2-1/4 | 25 | TECO-41508 | \$11.20 |
| 1-8 | 1-5/8 | 2-1/2 | 25 | TECO-41509 | \$11.60 |

HEAVY HEX JAM NUTS

FEATURES:

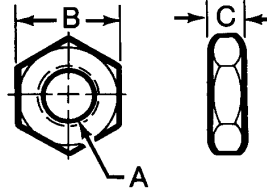
- Black Oxide Finish
- High Grade Alloy Steel
- Will outlast ordinary Hex Jam Nuts when used in repetitive operations



Prices Reduced!



Full Line Available!
Please call for more information.



| Thread A | B | C | Pkg Qty | Part Number | Price Each |
|----------|--------|-------|---------|-------------|------------|
| 1/4-20 | 1/2 | 11/64 | 25 | TECO-42201 | \$0.30 |
| 5/16-18 | 9/16 | 13/64 | 25 | TECO-42202 | \$0.33 |
| 3/8-16 | 11/16 | 15/64 | 25 | TECO-42203 | \$0.39 |
| 7/16-14 | 3/4 | 17/64 | 25 | TECO-42204 | \$0.60 |
| 1/2-13 | 7/8 | 19/64 | 25 | TECO-42205 | \$0.64 |
| 5/8-11 | 1-1/16 | 23/64 | 25 | TECO-42206 | \$0.73 |
| 3/4-10 | 1-1/4 | 27/64 | 25 | TECO-42207 | \$1.21 |
| 7/8-9 | 1-7/16 | 31/64 | 25 | TECO-42208 | \$2.43 |
| 1-8 | 1-5/8 | 35/64 | 25 | TECO-42209 | \$3.17 |

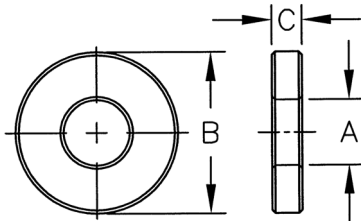
HARDENED FLAT WASHERS

FEATURES:

- Black Oxide Finish
- Case Hardened
- Material: C1010 - Steel
- Many sizes conform to TCMAI standards
- Large Quantities quoted upon request
- Stainless steel washers also available!



Prices Reduced!



| Stud Size | A | B | C | Pkg Qty | Part Number | Price Each |
|-----------|--------|-------|------|---------|-------------|------------|
| 3/16 | 13/64 | 1/2 | 3/32 | 50 | TECO-42600 | \$0.47 |
| 1/4 | 9/32 | 5/8 | 1/8 | 50 | TECO-42601 | \$0.50 |
| 5/16 | 11/32 | 3/4 | 1/8 | 50 | TECO-42602 | \$0.53 |
| 3/8 | 13/32 | 7/8 | 1/8 | 50 | TECO-42603 | \$0.55 |
| 7/16 | 15/32 | 1 | 1/8 | 50 | TECO-42604 | \$0.67 |
| 1/2 | 17/32 | 1-1/8 | 1/8 | 50 | TECO-42605 | \$0.67 |
| 5/8 | 21/32 | 1-3/8 | 1/8 | 50 | TECO-42606 | \$0.83 |
| 3/4 | 25/32 | 1-5/8 | 5/32 | 50 | TECO-42607 | \$1.18 |
| 7/8 | 29/32 | 1-3/4 | 5/32 | 50 | TECO-42608 | \$1.63 |
| 1 | 1-1/32 | 2 | 3/16 | 50 | TECO-42609 | \$2.19 |
| 1-1/8 | 1-5/32 | 2-1/4 | 7/32 | 50 | TECO-42610 | \$4.68 |
| 1-1/4 | 1-9/32 | 2-1/2 | 9/32 | 50 | TECO-42611 | \$4.68 |
| #4 | 1/8 | 5/16 | 5/64 | 50 | TECO-42612 | \$0.37 |
| #6 | 5/32 | 3/8 | 5/64 | 50 | TECO-42613 | \$0.42 |
| #8 | 3/16 | 7/16 | 5/64 | 50 | TECO-42614 | \$0.46 |

HEAVY DUTY HARDENED FLAT WASHERS

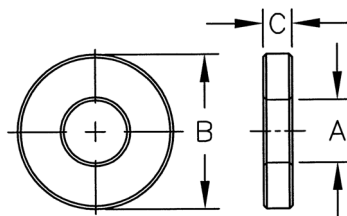
FEATURES:

- Black Oxide Finish
- Case Hardened
- C1010 Material
- Large Quantities quoted upon request



Full Line Available!
Please call for more information.

Prices Reduced!



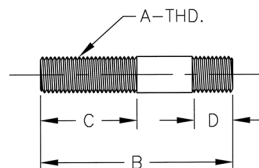
| Stud Size | A | B | C | Pkg Qty | Part Number | Price Each |
|-----------|--------|-------|------|---------|-------------|------------|
| 1/4 | 9/32 | 5/8 | 3/16 | 50 | TECO-42619 | \$1.18 |
| 5/16 | 11/32 | 3/4 | 3/16 | 50 | TECO-42620 | \$1.26 |
| 3/8 | 13/32 | 7/8 | 3/16 | 50 | TECO-42621 | \$1.33 |
| 7/16 | 15/32 | 1 | 3/16 | 50 | TECO-42622 | \$1.43 |
| 1/2 | 17/32 | 1-1/8 | 3/16 | 50 | TECO-42623 | \$1.49 |
| 5/8 | 21/32 | 1-3/8 | 3/16 | 50 | TECO-42624 | \$1.63 |
| 3/4 | 25/32 | 1-5/8 | 1/4 | 50 | TECO-42625 | \$1.97 |
| 7/8 | 29/32 | 1-3/4 | 1/4 | 50 | TECO-42626 | \$2.66 |
| 1 | 1-1/32 | 2 | 9/32 | 50 | TECO-42627 | \$3.50 |

Call Us Today For All Of Your Machine Tool Needs!

DRIVER STUDS-VARIOUS LENGTHS

Prices Reduced!

- FEATURES:**
- Black Oxide Finish
 - Medium Carbon Steel
 - Special lengths & sizes quoted upon request
 - Metric studs also available



| Thread A | B | C | D | Part Number | Price Each |
|----------|------|------|------------|-------------|------------|
| 1/4-20 | 1.50 | 0.88 | 0.38 | TECO-40350 | \$1.86 |
| | 2.00 | 1.00 | 0.38 | TECO-40351 | \$1.88 |
| | 2.50 | 1.00 | 0.38 | TECO-40352 | \$1.90 |
| | 3.00 | 1.50 | 0.38 | TECO-40353 | \$1.91 |
| | 4.00 | 1.75 | 0.38 | TECO-40354 | \$1.96 |
| | 5.00 | 1.75 | 0.38 | TECO-40355 | \$1.98 |
| | 6.00 | 2.00 | 0.38 | TECO-40356 | \$2.00 |
| | 7.00 | 2.00 | 0.38 | TECO-40357 | \$2.03 |
| 8.00 | 2.50 | 0.38 | TECO-40358 | \$2.09 | |

| Thread A | B | C | D | Part Number | Price Each |
|----------|------|------|------------|-------------|------------|
| 3/8-16 | 1.50 | 0.63 | 0.63 | TECO-40550 | \$1.85 |
| | 2.00 | 1.00 | 0.63 | TECO-40551 | \$1.85 |
| | 3.00 | 1.50 | 0.63 | TECO-40552 | \$1.88 |
| | 4.00 | 1.50 | 0.63 | TECO-40553 | \$1.88 |
| | 5.00 | 1.75 | 0.63 | TECO-40554 | \$1.93 |
| | 6.00 | 2.00 | 0.63 | TECO-40555 | \$1.98 |
| 8.00 | 2.50 | 0.63 | TECO-40556 | \$2.14 | |

| Thread A | B | C | D | Part Number | Price Each |
|----------|------|------|------|-------------|------------|
| 1/2-13 | 10.0 | 3.00 | 0.75 | TECO-40781 | \$5.72 |
| | 12.0 | 3.00 | 0.75 | TECO-40782 | \$6.99 |

| Thread A | B | C | D | Part Number | Price Each |
|----------|------|------|------------|-------------|------------|
| 5/16-18 | 1.50 | 0.75 | 0.50 | TECO-40450 | \$2.14 |
| | 2.00 | 1.00 | 0.50 | TECO-40451 | \$2.15 |
| | 2.50 | 1.00 | 0.50 | TECO-40452 | \$2.16 |
| | 3.00 | 1.50 | 0.50 | TECO-40453 | \$2.24 |
| | 4.00 | 1.50 | 0.50 | TECO-40454 | \$2.29 |
| | 5.00 | 1.75 | 0.50 | TECO-40455 | \$2.36 |
| | 6.00 | 2.00 | 0.50 | TECO-40456 | \$2.45 |
| | 7.00 | 2.00 | 0.50 | TECO-40457 | \$2.58 |
| 8.00 | 2.50 | 0.50 | TECO-40458 | \$2.65 | |

| Thread A | B | C | D | Part Number | Price Each |
|----------|------|------|------|-------------|------------|
| 1/2-13 | 1.50 | 0.63 | 0.63 | TECO-40770 | \$1.88 |
| | 2.00 | 1.00 | 0.63 | TECO-40771 | \$1.95 |
| | 3.00 | 1.50 | 0.75 | TECO-40772 | \$1.95 |
| | 4.00 | 1.50 | 0.75 | TECO-40773 | \$2.11 |
| | 5.00 | 1.75 | 0.75 | TECO-40774 | \$2.20 |
| | 5.50 | 1.75 | 0.75 | TECO-40775 | \$2.20 |
| | 6.00 | 2.00 | 0.75 | TECO-40776 | \$2.28 |
| | 6.50 | 2.00 | 0.75 | TECO-40777 | \$2.43 |
| | 7.00 | 2.00 | 0.75 | TECO-40778 | \$2.51 |
| | 8.00 | 2.50 | 0.75 | TECO-40779 | \$2.66 |
| | 9.00 | 2.50 | 0.75 | TECO-40780 | \$5.07 |

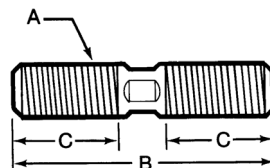
| Thread A | B | C | D | Part Number | Price Each |
|----------|------|------|------|-------------|------------|
| 5/8-11 | 2.00 | 1.00 | 0.63 | TECO-40850 | \$2.43 |
| | 2.50 | 1.00 | 0.88 | TECO-40851 | \$2.43 |
| | 3.00 | 1.50 | 0.88 | TECO-40852 | \$2.43 |
| | 4.00 | 1.75 | 0.88 | TECO-40853 | \$2.59 |
| | 5.00 | 1.75 | 0.88 | TECO-40854 | \$2.91 |
| | 5.50 | 2.00 | 0.88 | TECO-40855 | \$2.99 |
| | 6.00 | 2.00 | 0.88 | TECO-40856 | \$3.15 |
| | 6.50 | 2.00 | 0.88 | TECO-40857 | \$3.32 |
| | 7.00 | 2.00 | 0.88 | TECO-40858 | \$3.46 |
| | 8.00 | 2.50 | 0.88 | TECO-40859 | \$3.72 |
| | 9.00 | 2.50 | 0.88 | TECO-40860 | \$6.45 |
| | 10.0 | 2.50 | 0.88 | TECO-40861 | \$7.18 |
| | 12.0 | 3.00 | 0.88 | TECO-40862 | \$7.92 |
| | 14.0 | 3.00 | 0.88 | TECO-40863 | \$9.23 |

Please See Page 615 for more TE-CO Products

DRIVER STUDS

Prices Reduced!

- FEATURES:**
- Black Oxide Finish
 - Tensile Strength: 125,000 PSI min.
 - Medium Carbon Steel
 - Most studs have wrench flats



| Thread A | B | C | Flats | Part Number | Price Each |
|----------|-------|-----|-------|-------------|------------|
| 1/4-20 | 1-1/2 | 1/2 | NO | TECO-40301 | \$1.77 |
| | 2 | 3/4 | NO | TECO-40302 | \$1.79 |
| | 2-1/2 | 1 | NO | TECO-40303 | \$1.80 |
| | 3 | 1 | NO | TECO-40304 | \$1.81 |
| | 3-1/2 | 1 | NO | TECO-40305 | \$1.86 |
| | 4 | 1 | NO | TECO-40306 | \$1.90 |
| | 4-1/2 | 1 | NO | TECO-40307 | \$1.91 |
| | 5 | 1 | NO | TECO-40308 | \$1.92 |
| | 5-1/2 | 1 | NO | TECO-40309 | \$1.93 |
| | 6 | 1 | NO | TECO-40310 | \$1.95 |
| | 6-1/2 | 1 | NO | TECO-40311 | \$1.96 |
| | 7 | 1 | NO | TECO-40312 | \$1.97 |
| | 7-1/2 | 1 | NO | TECO-40313 | \$1.99 |
| | 8 | 1 | NO | TECO-40314 | \$2.00 |

| Thread A | B | C | Flats | Part Number | Price Each |
|----------|-------|-------|------------|-------------|------------|
| 3/8-16 | 1-1/2 | 1/2 | NO | TECO-40501 | \$1.77 |
| | 2 | 3/4 | NO | TECO-40502 | \$1.76 |
| | 2-1/2 | 1 | NO | TECO-40503 | \$1.76 |
| | 3 | 1 | YES | TECO-40504 | \$1.76 |
| | 3-1/2 | 1-1/4 | YES | TECO-40505 | \$1.77 |
| | 4 | 1-1/4 | YES | TECO-40506 | \$1.79 |
| | 4-1/2 | 1-1/4 | YES | TECO-40507 | \$1.80 |
| | 5 | 1-1/4 | YES | TECO-40508 | \$1.86 |
| | 5-1/2 | 1-1/4 | YES | TECO-40509 | \$1.91 |
| | 6 | 1-1/4 | YES | TECO-40510 | \$1.92 |
| | 6-1/2 | 1-1/4 | YES | TECO-40511 | \$1.96 |
| | 7 | 1-1/4 | YES | TECO-40512 | \$1.97 |
| 7-1/2 | 1-1/4 | YES | TECO-40513 | \$1.99 | |
| 8 | 1-1/4 | YES | TECO-40514 | \$2.02 | |

| Thread A | B | C | Flats | Part Number | Price Each |
|----------|----|-------|-------|-------------|------------|
| 1/2-13 | 9 | 1-1/2 | YES | TECO-40715 | \$4.89 |
| | 10 | 1-1/2 | YES | TECO-40716 | \$5.53 |
| | 12 | 1-1/2 | YES | TECO-40717 | \$6.72 |
| | 14 | 1-1/2 | YES | TECO-40718 | \$7.44 |
| | 16 | 1-1/2 | YES | TECO-40719 | \$9.49 |

| Thread A | B | C | Flats | Part Number | Price Each |
|----------|-------|-------|-------|-------------|------------|
| 5/16-18 | 1-1/2 | 1/2 | NO | TECO-40401 | \$2.03 |
| | 2 | 3/4 | NO | TECO-40402 | \$2.04 |
| | 2-1/2 | 1 | NO | TECO-40403 | \$2.06 |
| | 3 | 1-1/8 | NO | TECO-40404 | \$2.16 |
| | 3-1/2 | 1-1/8 | NO | TECO-40405 | \$2.19 |
| | 4 | 1-1/8 | NO | TECO-40406 | \$2.22 |
| | 4-1/2 | 1-1/8 | NO | TECO-40407 | \$2.24 |
| | 5 | 1-1/8 | NO | TECO-40408 | \$2.28 |
| | 5-1/2 | 1-1/8 | NO | TECO-40409 | \$2.31 |
| | 6 | 1-1/8 | NO | TECO-40410 | \$2.36 |
| | 6-1/2 | 1-1/8 | NO | TECO-40411 | \$2.44 |
| | 7 | 1-1/8 | NO | TECO-40412 | \$2.47 |
| | 7-1/2 | 1-1/8 | NO | TECO-40413 | \$2.52 |
| | 8 | 1-1/8 | NO | TECO-40414 | \$2.54 |

| Thread A | B | C | Flats | Part Number | Price Each |
|----------|-------|-------|-------|-------------|------------|
| 1/2-13 | 1-1/2 | 1/2 | NO | TECO-40701 | \$1.79 |
| | 2 | 3/4 | NO | TECO-40702 | \$1.88 |
| | 2-1/2 | 1 | NO | TECO-40703 | \$1.79 |
| | 3 | 1 | YES | TECO-40704 | \$1.88 |
| | 3-1/2 | 1-1/4 | YES | TECO-40705 | \$1.95 |
| | 4 | 1-1/2 | YES | TECO-40706 | \$2.02 |
| | 4-1/2 | 1-1/2 | YES | TECO-40707 | \$2.02 |
| | 5 | 1-1/2 | YES | TECO-40708 | \$2.09 |
| | 5-1/2 | 1-1/2 | YES | TECO-40709 | \$2.09 |
| | 6 | 1-1/2 | YES | TECO-40710 | \$2.19 |
| | 6-1/2 | 1-1/2 | YES | TECO-40711 | \$2.34 |
| | 7 | 1-1/2 | YES | TECO-40712 | \$2.42 |
| | 7-1/2 | 1-1/2 | YES | TECO-40713 | \$2.50 |
| | 8 | 1-1/2 | YES | TECO-40714 | \$2.57 |

| Thread A | B | C | Flats | Part Number | Price Each |
|----------|-------|-------|-------|-------------|------------|
| 5/8-11 | 1-1/2 | 1/2 | NO | TECO-40801 | \$2.50 |
| | 2 | 3/4 | NO | TECO-40802 | \$2.34 |
| | 2-1/2 | 1 | NO | TECO-40803 | \$2.26 |
| | 3 | 1 | YES | TECO-40804 | \$2.34 |
| | 3-1/2 | 1-1/4 | YES | TECO-40805 | \$2.50 |
| | 4 | 1-1/2 | YES | TECO-40806 | \$2.50 |
| | 4-1/2 | 1-3/4 | YES | TECO-40807 | \$2.65 |
| | 5 | 1-3/4 | YES | TECO-40808 | \$2.81 |
| | 5-1/2 | 1-3/4 | YES | TECO-40809 | \$2.87 |
| | 6 | 1-3/4 | YES | TECO-40810 | \$3.03 |
| | 6-1/2 | 1-3/4 | YES | TECO-40811 | \$3.19 |
| | 7 | 1-3/4 | YES | TECO-40812 | \$3.34 |
| | 7-1/2 | 1-3/4 | YES | TECO-40813 | \$3.60 |
| | 8 | 1-3/4 | YES | TECO-40814 | \$3.60 |
| | 9 | 1-3/4 | YES | TECO-40815 | \$6.21 |
| | 10 | 1-3/4 | YES | TECO-40816 | \$6.93 |
| | 12 | 1-3/4 | YES | TECO-40817 | \$7.64 |
| | 14 | 1-3/4 | YES | TECO-40818 | \$8.90 |
| | 16 | 1-3/4 | YES | TECO-40819 | \$10.15 |
| | 18 | 1-3/4 | YES | TECO-40820 | \$11.15 |
| | 20 | 1-3/4 | YES | TECO-40821 | \$12.53 |
| | 22 | 1-3/4 | YES | TECO-40822 | \$14.35 |
| | 24 | 1-3/4 | YES | TECO-40823 | \$15.49 |

Call Us Or Visit Our Website For Our Complete Selection!

LATHE CHUCKS
LIVE CENTERS
VISE JAWS
VISE ACCESSORIES
STRAIGHT SHANK
COLLET HOLDERS
TAP HOLDERS
DRILL CHUCKS
CARBIDE INSERTS
THREADING/GROOVING
CUTTING TOOLS
MACHINERY
PRECISION TOOLS
DEBURRING
COOLANT/FLUIDS
TOOL STORAGE