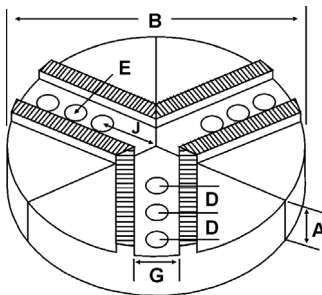
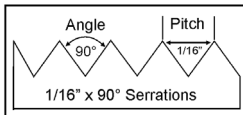
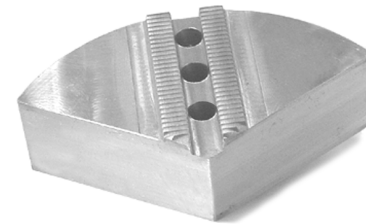


ROUND JAWS- 1/16" x 90° Serrations

FOR USE ON: **SMW Autoblok, Rohm, Pratt Burnerd & Other Chucks**



- 1/16" x 90° serrations
- Round Jaws allow for complete gripping of workpiece
- Oversized jaws available
- Ideal for thin-walled or irregular shaped workpieces.
- Can be machined to fit workpiece
- Max. length of serrations: 5.75"
- Special "J" dimensions available
- Available in Aluminum, Cast Iron & Steel
- Made in the USA



Group

I1



Critical Dimensions

Group No.	Chuck Size	Critical Dimensions			Holeto Front J	Pie Dia B	Height Inch A	No. of Holes	Industry Ref #	ALUMINUM		CAST IRON		STEEL	
		Groove Width G	Screw Size E	Hole Space D						Part Number	Price Set of 3	Part Number	Price Set of 3	Part Number	Price Set of 3
I1-43-62	5	0.433 (11mm)	5/16	0.625 (16mm)	0.875	6	2.00	3	-	6-RPH-5256A	\$72.80	-	-	6-RPH-5256S	\$192.79
I1-43-71	5-6	0.433 (11mm)	5/16	0.718 (18mm)	1.150	6	2.00	3	-	RPH-6200A	\$82.94	RPH-6200CI	\$144.31	RPH-6200S	\$202.43
						6	3.00	3	-	RPH-6300A	\$114.33	-	-	-	-
						6	4.00	3	-	RPH-6400A	\$123.59	-	-	RPH-6400S	\$312.86
I1-47-59	5-6	0.473 (12mm)	5/16	0.591 (15mm)	0.900	6	2.00	2	-	6-RPH-5200A	\$74.03	-	-	6-RPH-5200S	\$202.43
I1-55-71	5-6	0.551 (14mm)	3/8	0.710 (18mm)	1.050	6	2.00	3	-	RPH-6205A	\$82.94	RPH-6205CI	\$144.31	RPH-6205S	\$202.43
						6	4.00	3	-	RPH-6405A	\$123.59	-	-	RPH-6405S	\$312.86
						8	2.00	3	-	8-RPH-6201A	\$123.25	8-RPH-6201CI	\$185.53	8-RPH-6201S	\$280.42
I1-55-87	5-10	0.551 (14mm)	3/8	0.875 (22mm)	1.650	8	4.00	3	-	8-RPH-6401A	\$176.81	-	-	8-RPH-6401S	\$478.49
						10	2.00	3	-	RPH-10205A	\$163.91	RPH-10205CI	\$278.30	RPH-10205S	\$423.27
						10	4.00	3	-	RPH-10405A	\$243.27	RPH-10405CI	\$494.74	-	-
I1-55-98	5-6	0.551 (14mm)	3/8	0.984 (25mm)	1.420	6	2.00	2	-	RSM-6200A	\$83.92	RSM-6200CI	\$144.31	RSM-6200S	\$202.43
						6	4.00	2	-	RSM-6400A	\$131.58	-	-	RSM-6400S	\$312.86
I1-66-87	8	0.669 (17mm)	1/2	0.875 (22mm)	1.650	8	2.00	3	-	RPH-8200A	\$123.25	RPH-8200CI	\$185.53	RPH-8200S	\$294.45
						8	4.00	3	-	RPH-8400A	\$176.81	-	-	RPH-8400S	\$478.49
I1-66-100	8	0.669 (17mm)	1/2	1.000 (25.5mm)	2.250	8	2.00	2	-	RPH-8201A	\$126.29	RPH-8201CI	\$185.53	RPH-8201S	\$294.45
						8	4.00	2	-	RPH-8401A	\$176.81	-	-	RPH-8401S	\$478.49
						10	2.00	2	-	10-RPH-8201A	\$165.73	-	-	-	-
						12	2.00	2	-	12-RPH-8201A	\$293.48	-	-	-	-
I1-66-112	8	0.669 (17mm)	1/2	1.125 (28.5mm)	1.125	8	2.00	3	SMW8P	RSM-8200A	\$126.29	RSM-8200CI	\$185.53	RSM-8200S	\$294.45
						8	4.00	3	SMW8P1	RSM-8400A	\$176.81	-	-	RSM-8400S	\$478.49

Round Jaw Material: ALUMINUM-6061-T6 Bar Stock, CAST IRON-Gray, STEEL-1018. 18" & Larger- Aluminum Casting T6
For complete list of applicable chucks, see pages 542-554. * denotes non-stock item. Please allow 1 week manufacturing time.

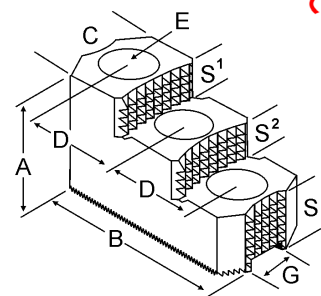
HARD JAWS-2 STEP

1/16" x 90° Serrations



FEATURES:

- Designed for first operation roughing, expect standard runout between 0.005-0.010
- Reversible-suitable for OD & ID workholding.
- **XTRA BITE** -very aggressive bite. Has conical teeth for extra gripping power and ground body to provide improved runout.



E

Critical Dimensions

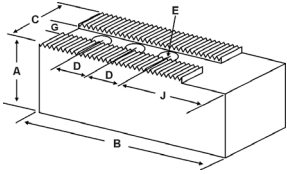
Group Number	Chuck Size	Groove Width G	Screw Size E	Hole Space D	Width Inch C	OAL Inch B	Height Inch A	No. of Holes	No. of Steps	Top Step Ht S1	Mid Step Ht S2	Bot Step Ht S3	Part Number	Price Per Set
I1-43-71	6	0.433 (11mm)	5/16	0.719 (18.5mm)	1.250	3.000	2.000	3	2	0.500	0.500	1.000	PH-60HJ2-X	\$448.87
I1-55-87	6	0.551 (14mm)	3/8	0.875 (22mm)	1.250	3.000	2.000	3	2	0.375	0.375	1.250	PH-61HJ2-X	\$448.87
I1-66-94	8	0.669 (17mm)	1/2	0.945 (24mm)	1.500	3.500	1.969	3	2	0.530	0.530	0.909	PH-80HJ2-X	\$484.79

Call Us Today For All Of Your Machine Tool Needs!

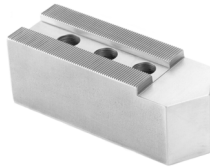
SOFT JAWS- 1/16" x 90° Serrations

C

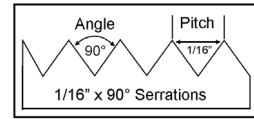
FOR USE ON: **SMW Autoblok, Rohm, Pratt Burnerd & Other Chucks**



• Max. length of serrations: 5.75"



QUANTITY DISCOUNTS!
Order **5 SETS OR MORE** of the same part number soft jaw and receive a **5% DISCOUNT!**



LATHE CHUCKS
LIVE CENTERS

VICE JAWS
VICE ACCESSORIES

STRAIGHT SHANK
COLLET HOLDERS

TAP HOLDERS
DRILL CHUCKS

CARBIDE INSERTS
THREADING/GROOVING

CUTTING TOOLS
MACHINERY

PRECISION TOOLS
DEBURRING

COOLANT/FLUIDS
TOOL STORAGE

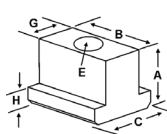
Group No.	Chuck Size	Critical Dimensions			Hght Inch A	Hole to Front J	Width Inch C	Length Inch B	No. of Holes	ALUMINUM		STEEL	
		Groove Width G	Screw Size E	Hole Space D						FLAT END Part Number	Price Set Of 3	FLAT END Part Number	Price Set Of 3
11-43-62	5	0.433 (11mm)	5/16	0.625 (16mm)	1.50	0.875	1.00	2.500	3	PH-5156AF	\$39.36	PH-5156F	\$44.04
					2.00	0.875	1.00	2.500	3	PH-5256AF	\$45.81	PH-5256F	\$51.19
11-43-71	5 - 6	0.433 (11mm)	5/16	0.718 (18mm)	1.50	1.250	1.25	3.125	3	PH-6150AF	\$42.91	PH-6150F	\$45.59
					2.00	1.250	1.25	3.125	3	PH-6200AF	\$53.24	PH-6200F	\$59.34
					2.50	1.250	1.25	3.125	3	PH-6250AF	\$55.13	PH-6250F	\$61.26
					3.00	1.250	1.25	3.125	3	PH-6300AF	\$65.69	PH-6300F	\$67.83
11-47-59	5 - 6	0.473	5/16	0.591	1.50	0.900	1.00	2.500	3	PH-5150AF	\$39.36	PH-5150F	\$44.04
11-47-63	5 - 6	0.472	8mm	0.630	1.00	0.900	1.00	2.500	3	PH-5100AF	\$39.36	PH-5100F	\$44.04
					2.00	0.900	1.25	2.500	3	PH-5200AF	\$53.24	PH-5200F	\$55.36
11-55-71	5 - 6	0.551 (14mm)	3/8	0.710 (18mm)	1.50	1.150	1.25	3.000	3	PH-6155AF	\$41.25	PH-6155F	\$46.02
					3.00	1.150	1.25	3.000	3	PH-6305AF	\$53.14	PH-6305F	\$58.91
11-55-78	5-6	0.551 (14mm)	3/8	0.787	2.00	1.625	1.25	3.000	3	HA-6200AF	\$53.23	HA-6200F	\$55.36
					3.00	1.625	1.25	3.000	3	HA-6300AF	\$60.30	HA-6300F	\$67.83
					4.00	1.625	1.25	3.000	3	HA-6400AF	\$107.34	HA-6400F	\$118.64
11-55-87	5 - 10	0.551 (14mm)	3/8	0.875 (22mm)	1.50	2.125	1.50	4.375	3	PH-6151AF	\$49.77	PH-6151F	\$55.20
					2.00	2.125	1.50	4.375	3	PH-6201AF	\$58.77	PH-6201F	\$65.08
					2.00	2.325	1.75	4.750	3	PH-10205AF	\$69.24	PH-10205F	\$75.83
					2.50	2.125	1.50	4.375	3	PH-6251AF	\$57.54	PH-6251F	\$68.09
					3.00	2.125	1.50	4.375	3	PH-6301AF	\$78.00	PH-6301F	\$86.14
					3.00	3.575	2.00	6.000	3	PH-10306AF	\$100.83	PH-10306F	\$110.43
					4.00	2.125	1.50	4.375	3	PH-6401AF	\$107.35	PH-6401F	\$118.66
					4.00	2.325	1.75	4.750	3	PH-10405AF	\$96.05	PH-10405F	\$82.39
					4.00	3.575	2.00	6.000	3	PH-10406AF	\$121.38	PH-10406F	\$132.52
					11-55-98	5 - 6	0.551 (14mm)	3/8	0.984 (25mm)	1.50	1.650	1.25	3.250
3.00	1.650	1.25	3.250	2						SM-6300AF	\$81.79	SM-6300F	\$88.91
11-59-81	6	0.590	10mm	0.810	2.00	0.750	1.00	2.000	2	PB-6200AF	\$53.19	PB-6200F	\$48.71
11-66-87	5 - 10	0.669 (17mm)	3/8	0.875 (22mm)	2.00	1.550	1.25	3.250	2	PH-6203AF	\$58.37	PH-6203F	\$65.08
					2.00	2.125	1.50	4.375	3	PH-8200AF	\$57.66	PH-8200F	\$63.81
					3.00	2.125	1.50	4.375	3	PH-8300AF	\$78.00	PH-8300F	\$86.14
11-66-100	8	0.669 (17mm)	1/2	1.000 (25.5mm)	2.00	1.725	1.50	4.375	3	PH-8201AF*	\$58.78	PH-8201F*	\$65.08
					3.00	1.725	1.50	4.375	3	PH-8301AF*	\$78.00	PH-8301F*	\$86.14
					4.00	1.725	1.50	4.375	3	PH-8401AF*	\$90.18	PH-8401F*	\$101.67
11-66-112	8	0.669 (17mm)	1/2	1.125 (28.5mm)	2.00	1.750	1.50	3.500	2	SM-8200AF*	\$56.35	SM-8200F*	\$62.57
					3.00	1.750	1.50	3.500	2	SM-8300AF*	\$83.71	SM-8300F*	\$92.97
					5.00	1.750	1.50	3.500	2	SM-8500AF*	\$178.78	SM-8500F*	\$201.57
11-71-83	8	0.710	12mm	0.830	2.00	0.840	1.75	3.000	2	PB-6201AF	\$58.12	PB-6201F	\$60.68

For "Pointed" Soft Jaws, please substitute "P" for "F" in the part number. Example: PH-5156AF will be PH-5156AP. For Pointed Jaws Add \$4.00.
Soft Jaw Material: ALUMINUM-6061-T6 Bar Stock, STEEL-1018, "B" JAWS-7075-T6 Aircraft Aluminum
For complete list of applicable chucks, see pages 542-554. * denotes non-stock item. Please allow 1 week manufacturing time.

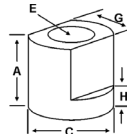
TEE NUTS & SCREWS



PH Style



SM Style



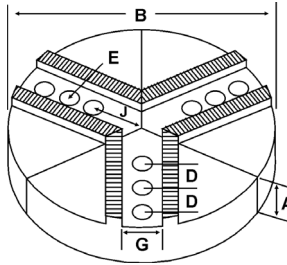
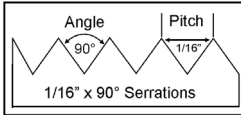
Chuck Size	SMW Autoblok	Critical Dimensions						1 Free Screw Included With Each Jaw Nut			
		Heel Height H	Groove Width G	Screw Size E	Hght Inch A	Width Inch C	Length Inch B	TeeNut Part Number	Price Each	Screw Part Number	Price Each
5	-	0.250	0.433	5/16"-18 x 1.00"	0.590	0.530	0.620	PH-56TN	\$21.23	S5/1618100	\$2.25
5 - 6	HF-KS 13032	0.235	0.433	5/16"-18 x 1.25"	0.780	0.685	0.750	PH-60TN	\$21.23	S5/1618125	\$2.25
5 - 10	-	0.250	0.550	3/8"-16 x 1.00"	0.605	0.750	0.750	PH-61TN	\$21.23	S3/816100	\$2.25
5 - 6	-	0.370	0.550	3/8"-16 x 1.50"	1.040	0.790	0.790	SM-65TN	\$22.93	S3/816150	\$2.25
8	-	0.370	0.668	1/2"-13 x 1.50"	1.080	1.080	0.910	SM-80TN	\$22.93	S1/213150	\$2.25

Call Us Or Visit Our Website For Our Complete Selection!

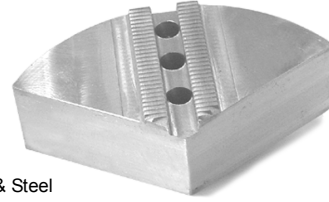
2019-20 MASTER CATALOG

ROUND JAWS- 1/16" x 90° Serrations

FOR USE ON: SMW Autoblok, Rohm, Pratt Burnerd & Other Chucks



- 1/16" x 90° serrations
- Round Jaws allow for complete gripping of workpiece
- Oversized jaws available
- Ideal for thin-walled or irregular shaped workpieces.
- Can be machined to fit workpiece
- Max. length of serrations: 5.75"
- Special "J" dimensions available
- Available in Aluminum, Cast Iron & Steel
- **Made in the USA**



Please See Page 56 For Hard Jaws

Group
I1



MACHINE VISES
VISE JAWS

RETENTION KNOBS
ER, DA, TG COLLETS

TOOLHOLDERS
TAP HOLDERS

INDEXABLE DRILLS
TURNING & BORING

ENDMILLS, DRILLS
TAPS & REAMERS

ABRASIVES
MEASURING TOOLS

MRO & SAFETY
FLAT STOCK/DRILL ROD

Group No.	Chuck Size	Critical Dimensions			Hole to Front J	Middle Hole to Front	Pie Dia B	Height Inch A	No. of Holes	Industry Ref #	ALUMINUM		CAST IRON/STEEL														
		Groove Width G	Screw Size E	Hole Space D							Part Number	Price Set of 3	Part Number	Price Set of 3													
I1-78-118	10 to 12	0.787 (20mm)	1/2	1.187 (30mm)	1.913	3.100	10	2.000	2	-	8-RPH-10200A	\$126.29	-	-													
								2.000	3	-	RPH-10200A	\$152.97	RPH-10200CI	\$278.30													
								-	-	-	-	RPH-10200S	\$423.27	-	-												
								2.500	3	-	RPH-10250A	\$212.91	-	-													
								4.000	3	-	RPH-10400A	\$235.45	RPH-10400CI	\$494.74	-	-											
								18	2.500	3	-	18-RPH-10250A	\$618.85	-	-												
					2.900	4.087	12	2.000	3	-	-	-	-	-	-	-	-	-	-								
																				12	2.500	3	-	12-RPH-10250A	\$215.37	12-RPH-10200CI	\$431.01
																				12	2.500	3	-	12-RPH-10250A	\$226.79	-	-
																				12	4.000	3	-	12-RPH-10400A	\$427.41	-	-
																				12	5.000	3	-	12-RPH-10500A	\$476.58	-	-
																				15	2.500	3	-	15-RPH-10250A	\$494.11	-	-
I1-82-112	11 to 12	0.827 (21mm)	5/8	1.125 (28.5mm)	3.630	-	12	2.000	2	-	RPH-11200A	\$215.37	RPH-11200CI	\$374.80													
I1-82-217	10 to 12	0.827 (21mm)	1/2	2.170 (55mm)	1.855	4.025	10	2.000	3	-	10-RPH-12200A	\$165.73	10-RPH-12200CI	\$412.28													
I1-82-117	10 to 12	0.827 (21mm)	1/2	1.187 (30mm)	2.875	-	12	2.500	2	-	RSM-12250A	\$267.98	-	-													
								4.000	2	-	RSM-12400A	\$427.41	-	-													
					2.900	4.087	12	2.000	3	-	-	-	-	-	-	-	-										
																		12	2.500	3	-	RPH-12200A	\$215.37	RPH-12200CI	\$431.01		
																		12	4.000	3	-	RPH-12250A	\$226.79	-	-		
I1-82-118m	10	0.827 (21mm)	16mm	1.181 (30mm)	1.819	3.000	10	2.000	3	SMW10P	RSM-10200A	\$152.97	-	-													
								4.000	3	SMW10P1	RSM-10400A	\$218.01	-	-													
								12	2.000	3	SMW12-10P	12-RSM-10200A	\$199.41	-	-												
								15	3.000	3	SMW15-10P	15-RSM-10300A	\$516.17	-	-												
								18	3.000	3	SMW18-10P	18-RSM-10300A	\$709.67	-	-												
I1-82-118	8 to 12	0.827 (21mm)	5/8	1.187 (30mm)	1.963	-	8	2.000	2	-	RPH-8205A	\$126.29	RPH-8205CI	\$185.53													
								-	-	-	-	-	RPH-8205S	\$294.45	-	-											
I1-82-156	14 to 18	0.827 (21mm)	5/8	1.562 (39.5mm)	2.875	4.437	15	2.500	3	-	RPH-15250A	\$494.11	RPH-15250CI	\$721.49													
								3.000	3	PH15P	RPH-15300A4	\$482.44	-	-													
								4.000	3	-	RPH-15400A	\$607.05	-	-													
								4.000	3	PH15P1	RPH-15400A4	\$547.13	-	-													
								2.500	3	-	18-RPH-15250A	\$618.85	-	-													
								3.000	3	PH18-15P	18-RPH-15300A4	\$730.96	-	-													
					3.438	5.000	18	4.000	3	-	-	-	-	-	-	-	-	-									
																			4.000	3	PH18-15P1	18-RPH-15400A4	\$835.46	-	-		
																			2.500	3	-	RPH-18250A	\$618.85	-	-		
																			4.000	3	-	RPH-18400A	\$835.46	-	-		
																			3.000	3	PH21-15P	21-RPH-15300A4	\$933.38	-	-		
																			2.500	3	-	24-RPH-18250A	\$1,074.06	-	-		
					3.438	5.000	24	3.000	3	-	-	-	-	-	-	-	-	-									
																			3.000	3	PH24-15P	24-RPH-15300A4	\$1,205.52	-	-		
																			4.000	3	-	24-RPH-18400A	\$1,550.55	-	-		
																			2.000	3	-	RPH-15210A	\$201.32	-	-		
																			4.000	3	-	RPH-15410A	\$288.74	-	-		
																			3.000	3	-	RPH-18300A	\$674.05	-	-		
I1-100-137	14 to 15	1.003 (25.5mm)	3/4	1.375 (35mm)	3.500	4.875	15	2.000	3	-	RPH-18400A	\$835.46	-	-													
I1-118-197	18	1.181 (30mm)	3/4	1.970 (50mm)	4.060	6.030	18	3.000	3	-	RPH-18300A	\$674.05	-	-													
								4.000	3	-	RPH-18400A	\$835.46	-	-													
								4.000	3	-	-	-	-	-													

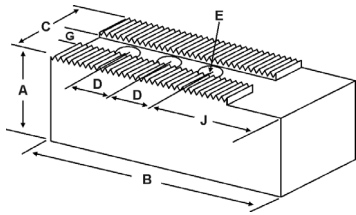
Round Jaw Material: ALUMINUM-6061-T6 Bar Stock, CAST IRON-Gray, STEEL-1018. 18" & Larger- Aluminum Casting T6
For complete list of applicable chucks, see pages 542-554. * denotes non-stock item. Please allow 1 week manufacturing time.

Call Us Today For All Of Your Machine Tool Needs!

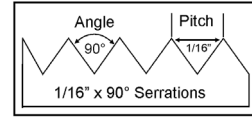
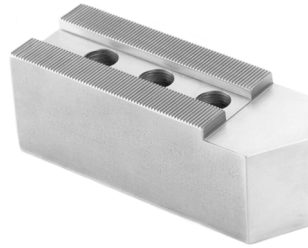
SOFT JAWS- 1/16" x 90° Serrations

C

FOR USE ON: **SMW Autoblok, Rohm, Pratt Burnerd & Other Chucks**



- 1/16" x 90° serrations
- Supplies maximum concentricity on finish turning operations
- Can be bored or turned to fit workpiece
- Steel jaws can be hardened
- Available flat ended or pointed for smaller diameter parts
- Special orders available
- Available in Aluminum & Steel
- Made in the USA



Group

11

QUANTITY DISCOUNTS!
Order **5 SETS OR MORE** of the same part number soft jaw and receive a **5% DISCOUNT!**

Group No.	Chuck Size	Critical Dimensions								ALUMINUM		STEEL	
		Groove Width G	Screw Size E	Hole Space D	Hght Inch A	Hole to Front J	Width Inch C	Length Inch B	No. of Holes	FLAT END Part Number	Price Set Of 3	FLAT END Part Number	Price Set Of 3
I1-78-118	10 - 12	0.787 (20mm)	1/2	1.187 (30mm)	2.50	2.250	1.75	5.250	3	PH-10250AF	\$77.06	PH-10250F	\$69.94
PBA 15					4.00	2.250	1.75	5.250	3	PH-10400AF	\$113.29	PH-10400F	\$96.40
					2.50	2.250	2.00	5.500	3	PH-10252AF	\$82.19	PH-10252F	\$78.89
					4.00	2.250	2.00	5.500	3	PH-10402AF	\$105.54	PH-10402F	\$98.15
I1-82-102	10-12	0.826	16mm	1.102	2.00	2.460	1.75	4.750	2	PB-12200AF	\$70.34	PB-12200F	\$65.90
I1-82-112	11 - 12	0.827 (21mm)	5/8	1.125 (28.5mm)	3.00	2.440	2.00	4.750	2	PH-11300AF*	\$87.61	PH-11300F*	\$57.61
					3.00	2.440	2.00	5.750	2	PH-11307AF*	\$95.21	PH-11307F*	\$65.84
I1-82-117	10 - 12	0.827 (21mm)	1/2	1.187 (30mm)	2.50	2.250	1.75	5.250	3	PH-12250AF	\$63.89	PH-12250F	\$69.94
4.00					2.250	1.75	5.250	3	PH-12400AF	\$89.04	PH-12400F	\$97.05	
2.50					2.875	2.00	5.250	2	SM-12250AF	\$86.98	SM-12250F	\$95.71	
4.00					2.875	2.00	5.250	2	SM-12400AF	\$109.48	SM-12400F	\$119.65	
I1-82-118	8 - 12	0.827 (21mm)	5/8	1.187 (30mm)	2.00	1.963	1.50	3.750	2	PH-8205AF	\$56.41	PH-8205F	\$62.57
					4.00	1.963	1.50	3.750	2	PH-8405AF	\$75.28	PH-8405F	\$82.83
					2.50	2.875	2.00	5.250	2	AT-12250AF	\$86.98	AT-12250F	\$95.71
					4.00	2.875	2.00	5.250	2	AT-12400AF	\$122.21	AT-12400F	\$133.99
I1-82-125	10 - 12	0.827 (21mm)	5/8	1.250 (32mm)	2.50	2.130	1.75	4.000	2	PB-10250AF*	\$57.55	PB-10250F	\$78.92
I1-82-156	14 - 18	0.827 (21mm)	5/8	1.562 (39.5mm)	2.50	2.875	2.00	6.750	3	PB-12250AF*	\$71.28	PB-12250F	\$95.71
					4.00	2.875	2.00	6.750	3	PH-15250AF	\$104.57	PH-15250F	\$114.84
					2.50	2.875	2.50	6.750	3	PH-15400AF	\$131.65	PH-15400F	\$143.56
					4.00	2.875	2.50	6.750	3	PH-16250AF	\$125.82	PH-16250F	\$110.43
I1-100-137	14 - 15	1.003 (25.5mm)	20mm	1.375 (35mm)	3.50	2.940	2.25	5.500	2	PH-15351AF*	\$103.05	PH-15351F*	\$81.28
					3.50	2.940	2.25	6.250	2	PH-153517AF*	\$117.11	PH-153517F*	\$92.88
I1-100-175	16	1.000 (25.5mm)	3/4	1.750 (44.5mm)	3.00	3.500	2.00	6.000	2	PB-16300AF*	\$109.40	PB-16300F*	\$92.41
I1-118-197	18	1.181 (30mm)	20mm	1.970 (50mm)	3.00	3.310	2.50	8.000	3	PH-18300AF*	\$169.60	PH-18300F*	\$185.47
					5.00	3.310	2.50	8.000	3	PH-18500AF*	\$296.92	PH-18500F*	\$324.72

For "Pointed" Soft Jaws, please substitute "P" for "F" in the part number. Ex.: PH-10250AF will be PH-10250AP. Pointed Jaws: Up to 10" add \$4.00, 12" & over add \$7.00.
Soft Jaw Material: ALUMINUM-6061-T6 Bar Stock, STEEL-1018, "B" JAWS-7075-T6 Aircraft Aluminum
For complete list of applicable chucks, see pages 542-554.* denotes non-stock item. Please allow 1 week manufacturing time.

TEE NUTS & SCREWS

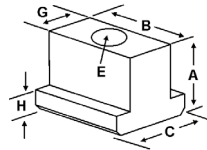
PH Style



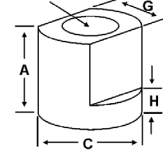
SM Style



PH Style



SM Style



Chuck Size	Heel Height H	Critical Dimensions			Width Inch C	Length Inch B	1 Free Screw Included With Each Tee Nut				
		Groove Width G	Screw Size E	Hght Inch A			Tee Nut Part Number	Price Each	Screw Part Number	Price Each	
10 - 12	0.425	0.825 (21mm)	1/2"-13 x 1.50"	1.168	-	1.100	SM-120TN	\$26.20	S1/213150	\$2.25	
11 - 18	0.325	0.785 (20mm)	1/2"-13 x 1.50"	0.850	1.000	1.000	PH-100TN	\$24.76	S1/213150	\$2.25	
11 - 18	0.430	0.827 (21mm)	5/8"-11 x 1.50"	1.000	1.000	1.115	PH-150TN	\$28.31	S5/811150	\$3.25	

Call Us Or Visit Our Website For Our Complete Selection!

2019-20 MASTER CATALOG

39

LATHE CHUCKS
LIVE CENTERS

WISE JAWS
WISE ACCESSORIES

STRAIGHT SHANK
COLLET HOLDERS

TAP HOLDERS
DRILL CHUCKS

CARBIDE INSERTS
THREADING/GROOVING

CUTTING TOOLS
MACHINERY

PRECISION TOOLS
DEBURRING

COOLANT/FLUIDS
TOOL STORAGE