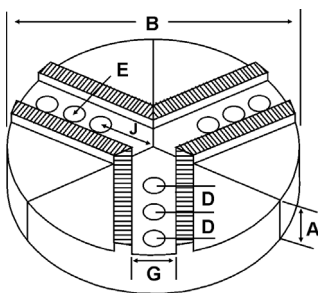
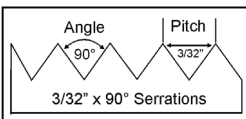
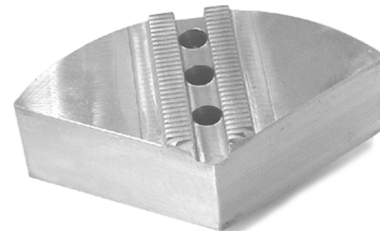


ROUND JAWS- 3/32" x 90° Serrations

FOR USE ON: **SMW Autoblok, Forkardt, Rohm, Pratt Burnerd & Other Chucks**



- 3/32" x 90° serrations
- Round Jaws allow for complete gripping of workpiece
- Oversized jaws available
- Ideal for thin-walled or irregular shaped workpieces.
- Can be machined to fit workpiece
- Max. length of serrations: 5.75"
- Special "J" dimensions available
- Available in Aluminum
- Made in the USA



Group
13



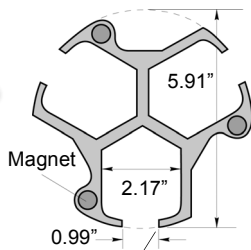
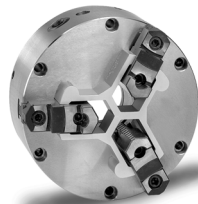
Critical Dimensions

Group No.	Chuck Size	Critical Dimensions							ALUMINUM				
		Groove Width G	Screw Size E	Hole Space D	Hole to Front J	Middle Hole to Front Jm	Pie Dia B	Height Inch A	No. of Holes	Industry Ref #	Part Number	Price Set of 3	
13-100-138	16 to 20	1.004 (25.5mm)	20mm	1.380 (35mm)	3.500	4.880	16	2.500	3	-	RFK-16250A	\$486.91	
								4.000	3	-	RFK-16400A	\$598.65	
								2.500	3	-	21-RFK-16250A	\$908.09	
13-100-156	16 to 20	1.000 (25.5mm)	3/4	1.562 (39.5mm)	3.250	4.812	16	2.500	3	-	RSM-16250A	\$486.91	
								4.000	3	-	RSM-16400A	\$598.65	
13-100-156M	16	1.004 (25.5mm)	20mm	1.562 (39.5mm)	3.313	4.875	15	3.000	3	SMW15-16P	15-RSM-16301A4	\$516.17	
								4.000	3	SMW15-16P1	15-RSM-16401A4	\$547.13	
								4.000	3	SMW18-16P1	18-RSM-16401A4	\$835.46	
								3.000	3	SMW18-20P	18-RSM-20301A	\$710.55	
								4.000	3	SMW18-20P1	18-RSM-20401A	\$835.46	
								3.000	3	SMW21-20P	21-RSM-20301A	\$933.38	
	20	1.004 (25.5mm)	20mm	1.562 (39.5mm)	4.938	6.500	18	4.000	3	SMW21-20P1	21-RSM-20401A	\$1,114.13	
								3.000	3	SMW24-25P	24-RSM-25301A	\$1,205.52	
								4.000	3	SMW24-25P1	24-RSM-25401A	\$1,521.01	
								3.000	3	SMW28-25P	28-RSM-25301A	\$1,698.08	
								4.000	3	SMW28-25P1	28-RSM-25401A	\$2,416.90	
								4.000	3	SMW28-25P1	28-RSM-25401A	\$2,416.90	
13-118-250	25 to 32	1.181 (30mm)	1.00"	2.500 (63.5mm)	4.250	-	21	4.000	2	-	RSM-21400A	\$1,114.13	
								4.000	2	-	RSM-24400A	\$1,550.55	

Round Jaw Material: ALUMINUM-6061-T6 Bar Stock, CAST IRON-Gray, STEEL-1018. 18" & Larger- Aluminum Casting T6
For complete list of applicable chucks, see pages 542-554. * denotes non-stock item. Please allow 1 week manufacturing time.

CHUCK STOPS

This product is so useful and simple, you'll wonder why you never thought of it. The Royal chuck stop is a precision machined aluminum extrusion which mounts squarely against the face of almost any 3 jaw lathe chuck, providing a fixed reference surface for workpieces to locate against.



Saw-cut or mill larger for wider chuck jaws.

FEATURES:

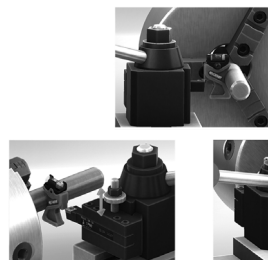
- Allows short parts to project past the chuck jaws
- Eliminates the need to bore soft jaws
- Front and rear locating surfaces are parallel within ±0.0004"
- 25mm slot width can be milled larger for chucks with wider jaws.

SPEEDY LATHE GAGE



The Speedy Lathe Gage is used to set lathe tools on the spindle axis for optimum cutting conditions. Poorly set cutting tools will leave a "NUB" at the center of the workpiece after performing a facing cut. This gage can be used to set tools on the spindle axis and eliminate this issue. It also features an adjustable level housing allowing you to correctly set tools even if your lathe is not perfectly leveled.

- Set turning and facing tools on spindle axis for optimum cutting conditions.
- Precision glass vial level with 30/2mm sensitivity.
- Adjustable level mount.
- Made from high strength aluminum.
- Durable anodized finish.



Speedy Lathe Gage
Part # EDGE-08000
\$19.99 ea

Accommodates Chuck Jaws Up To 2 1/8" Wide

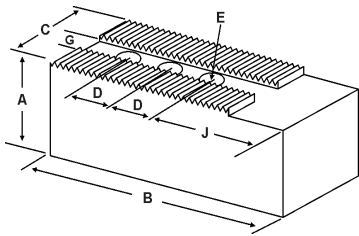
Description	Part Number	Set Price
Standard Set: 15, 20 & 25mm stops	ROY-25200	\$289.10
Deluxe Set: 15, 20, 25, 30 & 35mm stops	ROY-25210	\$502.74

Call Us Today For All Of Your Machine Tool Needs!

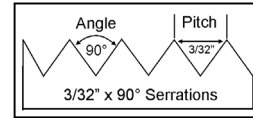
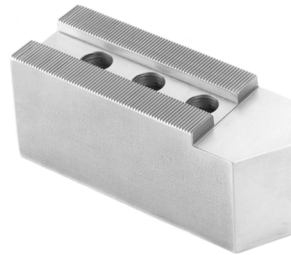
SOFT JAWS- 3/32" x 90° Serrations

C

FOR USE ON: **SMW Autoblok, Forkardt, Rohm, Pratt Burnerd & Other Chucks**



- 3/32" x 90° serrations
- Supplies maximum concentricity on finish turning operations
- Can be bored or turned to fit workpiece
- Steel jaws can be hardened
- Available flat ended or pointed for smaller diameter parts
- Special orders available
- Available in Aluminum & Steel
- **Made in the USA**



Group

13

QUANTITY DISCOUNTS!

Order **5 SETS OR MORE** of the same part number soft jaw and receive a **5% DISCOUNT!**

LATHE CHUCKS
LIVE CENTERS

VICE JAWS
VICE ACCESSORIES

STRAIGHT SHANK
COLLET HOLDERS

TAP HOLDERS
DRILL CHUCKS

CARBIDE INSERTS
THREADING/GROOVING

CUTTING TOOLS
MACHINERY

PRECISION TOOLS
DEBURRING

COOLANT/FLUIDS
TOOL STORAGE

Group No.	Critical Dimensions								ALUMINUM		STEEL	
	Groove Width G	Screw Size E	Hole Space D	Hght Inch A	Hole to Front J	Width Inch C	Length Inch B	No. of Holes	FLAT END Part Number	Price Set Of 3	FLAT END Part Number	Price Set Of 3
13-100-138 ROHM KFD 400-500-630	1.004 (25.5mm)	20mm	1.380 (35mm)	2.50	3.500	2.50	6.50	2	FK-16250AF	\$117.53	FK-16250F	\$128.81
				2.50	3.500	2.50	8.00	3	FK-16251AF	\$150.92	FK-16251F	\$165.63
				4.00	3.500	2.50	6.50	2	FK-16400AF	\$168.46	FK-16400F	\$184.04
				4.00	3.500	2.50	8.00	3	FK-16401AF	\$251.27	FK-16401F	\$276.05
13-100-156 SMW Autoblok ALD-400, BB 500-ES, BB 630-ES	1.000 (25.5mm)	3/4	1.562 (39.5mm)	3.00	3.250	2.50	6.50	2	SM-16300AF	\$134.50	SM-16300F	\$147.23
				3.00	3.750	2.50	8.00	3	SM-16301AF	\$184.38	SM-16301F	\$202.43
				4.00	3.250	2.50	6.50	2	SM-16400AF	\$147.69	SM-16400F	\$166.50
				5.00	3.250	2.50	6.50	2	SM-16500AF	\$186.08	SM-16500F	\$202.43
13-100-175	1.000 (25.5mm)	3/4	1.750 (44.5mm)	3.50	7.460	2.50	10.00	2	FK-25350AF*	\$259.81	FK-25350F*	\$284.13
				5.00	7.460	2.50	10.00	2	FK-25500AF*	\$371.16	FK-25500F*	\$405.91
13-110-162	1.102 (28mm)	3/4	1.625 (41.5mm)	3.00	3.630	3.50	6.75	2	SM-20300AF*	\$261.37	SM-20300F*	\$269.67
				3.00	5.880	3.50	9.00	2	SM-20307AF*	\$286.38	SM-20307F*	\$294.75
				5.00	3.630	3.50	6.75	2	SM-20500AF*	\$339.83	SM-20500F*	\$350.60
				5.00	5.880	3.50	9.00	2	SM-20507AF*	\$404.35	SM-20507F*	\$427.10
13-118-250	1.181 (30mm)	1.00	2.500 (63.5mm)	3.00	4.250	3.50	8.00	2	SM-24300AF	\$251.60	SM-24300F	\$276.05
				5.00	4.250	3.50	8.00	2	SM-24500AF	\$419.30	SM-24500F	\$460.08
				3.00	7.000	3.50	11.00	2	SM-24301AF	\$319.40	SM-24301F	\$349.66
				5.00	7.000	3.50	11.00	2	SM-24501AF	\$505.12	SM-24501F	\$746.67
13-118-275	1.181 (30mm)	1.00	2.750 (70mm)	3.50	4.500	3.50	10.00	2	SM-40350AF*	\$366.90	SM-40350F*	\$401.26
				5.00	4.500	3.50	10.00	2	SM-40500AF*	\$524.14	SM-40500F*	\$833.49

For "Pointed" Soft Jaws, please substitute "P" for "F" in the part number. Example: FK-16250AF will be FK-16250AP. For Pointed Jaws add \$7.00.

Soft Jaw Material: ALUMINUM-6061-T6 Bar Stock, STEEL-1018, "B" JAWS-7075-T6 Aircraft Aluminum

For complete list of applicable chucks, see pages 542-554. * denotes non-stock item. Please allow 1 week manufacturing time.

TEE NUTS & SCREWS

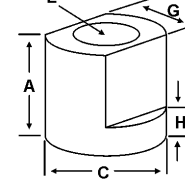
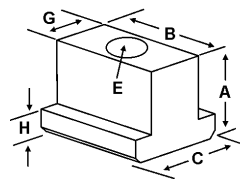


FK Style

SM Style

FK Style

SM Style



Chuck Size	Forkardt	Gamet	Pratt Burnerd PBA	Critical Dimensions				1 Free Screw Included With Each Tee Nut					
				Heel Height H	Groove Width G	Screw Size E	Hght Inch A	Width Inch C	Length Inch B	Tee Nut Part Number	Price Each	Screw Part Number	Price Each
16 - 20	-	-	-	0.575	0.999 (25.5mm)	3/4" - 10 x 1.75	1.150	1.370	1.370	SM-160TN	\$29.48	S3/410175	\$4.25
15 - 24	KP/T 400-500, KS 500	DE 400	400 HYD. FRONT END	0.433	1.003 (25.5mm)	20mm	1.141	1.417	1.082	FK-160TN	\$75.17	M2025050	\$3.25
25 - 32	-	-	-	0.728	1.180 (30mm)	1" - 8	1.752	1.772	-	SM-240TN	\$56.50	S1008	\$4.25

Call Us Or Visit Our Website For Our Complete Selection!