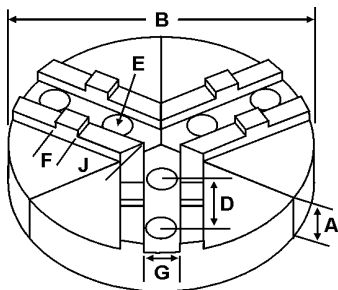
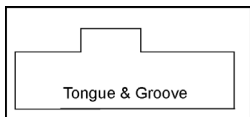
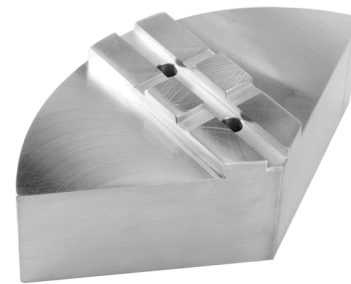


ROUND JAWS- American Standard Tongue & Groove

FOR USE ON: **Bison, Buck, BTC, Cushman, TMX, PBA, Yuasa & Rohm Chucks**



- American Standard Tongue & Groove
- Round Jaws allow for complete gripping of workpiece
- Oversized jaws available
- Ideal for thin-walled or irregular shaped workpieces.
- Can be machined to fit workpiece
- All jaws have 2 holes
- Special "J" dimensions available
- Available in Aluminum, Cast Iron & Steel
- Made in the USA



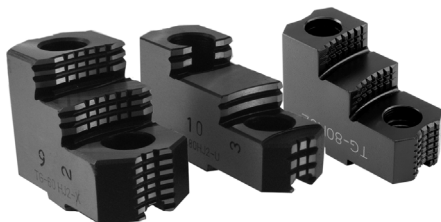
Group



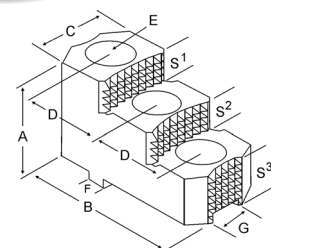
OFF-CENTER TONGUE		Critical Dimensions							ALUMINUM		CAST IRON		STEEL		
Group No.	Chuck Size	Type	Groove Width G	Tongue Width F	Screw Size E	Hole Space D	Tongue to Front J	Pie Dia B	Hght Inch A	Part Number	Price Set Of 3	Part Number	Price Set Of 3	Part Number	Price Set Of 3
TI-31-5/16-12	5	MEDIUM DUTY	0.313	0.500	5/16	1.250	1.100	6	2.00	6-RTG-5200A	\$83.92	-	-	-	-
TI-31-3/8-15	6	MEDIUM DUTY	0.313	0.500	3/8	1.500	1.360	6	2.00	RTG-6200A	\$76.66	RTG-6200CI	\$144.31	RTG-6200S*	\$202.43
3.00									RTG-6300A	\$114.33	RTG-6300CI	\$226.75	-	-	
4.00									RTG-6400A	\$118.88	-	-	-	-	
5.00									RTG-6500A*	\$194.07	-	-	-	-	
6.00									RTG-6600A	\$194.07	-	-	-	-	
TI-31-7/16-15	6	HEAVY DUTY	0.313	0.500	7/16	1.500	1.260	8	2.00	8-RTG-6200A	\$110.52	8-RTG-6200CI*	\$185.53	8-RTG-6200S*	\$294.45
									4.00	8-RTG-6400A	\$158.83	-	-	-	
									2.00	RTG-6205A	\$79.80	RTG-6205CI	\$144.31	-	-
TI-31-3/8-17	8	MEDIUM DUTY	0.313	0.500	3/8	1.750	1.200	6	2.00	6-RTG-8200A	\$83.92	-	-	-	-
									4.00	6-RTG-8400A*	\$196.16	-	-	-	-
									2.00	RTG-8200A	\$103.80	RTG-8200CI	\$185.53	RTG-8200S	\$294.45
TI-31-1/2-17	8	HEAVY DUTY	0.313	0.500	1/2	1.750	2.150	8	3.00	RTG-8300A	\$145.47	-	-	RTG-8300S*	\$508.26
									4.00	RTG-8400A	\$163.77	RTG-8400CI	\$350.44	-	-
									2.00	10-RTG-8200A	\$146.86	10-RTG-8200CI	\$278.30	10-RTG-8200S	\$423.27
									3.00	10-RTG-8300A	\$240.33	-	-	-	-
									4.00	10-RTG-8400A	\$227.62	-	-	-	-
									2.00	12-RTG-8200A	\$184.94	-	-	-	-
									2.50	12-RTG-8250A*	\$267.98	-	-	-	-
TI-31-1/2-17	8	HEAVY DUTY	0.313	0.500	1/2	1.750	2.150	10	2.00	12-RTG-8400A*	\$427.41	-	-	-	-
									4.00	12-RTG-8500A*	\$476.58	-	-	-	-
									2.00	RTG-8205A	\$120.11	RTG-8205CI	\$185.53	-	-
									4.00	RTG-8405A	\$161.96	RTG-8405CI	\$350.44	-	-
TI-31-1/2-17	8	HEAVY DUTY	0.313	0.500	1/2	1.750	2.150	10	2.00	10-RTG-8205A	\$146.86	-	-	-	-
									4.00	10-RTG-8405A	\$243.27	-	-	-	-

Round Jaw Material: ALUMINUM-6061-T6 Bar Stock, CAST IRON-Gray, STEEL-1018. 18" & Larger- Aluminum Casting T6
For complete list of applicable chucks, see pages 542-554. * denotes non-stock item. Please allow 1 week manufacturing time.

AMERICAN STANDARD TONGUE & GROOVE HARD JAWS



- Designed for first operation roughing, expect standard runout between 0.005-0.010
- Reversible-suitable for OD & ID workholding.
- **XTRA BITE (-X)** -very aggressive bite. Has conical teeth for extra gripping power and ground body to provide improved runout.
- **GRIP-RITE-OEM Style (-U)** hard jaws have ground tips and provide better runout.
- **SHARK JAWS** have conical teeth for extra gripping power and black oxide for long life. Ideal for castings and scaly material. Made in the USA.



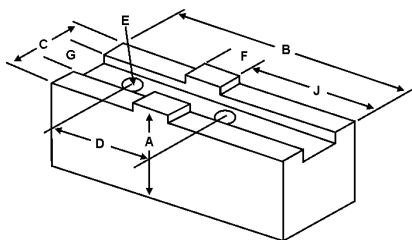
		Critical Dimensions															
Group	Chuck Size	Type	Groove Width G	Tongue Width F	Screw Size E	Hole Space D	Width Inch C	OAL Inch B	Height Inch A	No. of Holes	No. of Steps	Top Step Ht S1	Mid Step Ht S2	Bot Step Ht S3	Part Number	Price Per Set	Code
TI-31-3/8-15	6	-	0.313	0.500	3/8	1.500	1.035	2.834	1.511	2	2	0.354	0.354	0.803	TG-60HJ2-U	\$282.80	E
							1.500	2.780	1.969	2	2	0.530	0.530	0.909	TG-60HJ2-X	\$297.68	E
TI-31-3/8-17	8	-	0.313	0.500	3/8	1.750	1.250	3.550	2.000	2	2	0.600	0.360	1.040	TG-80HJ2	\$359.60	D
							1.114	3.227	1.629	2	2	0.394	0.394	0.843	TG-80HJ2-U	\$307.03	E
							1.500	3.287	1.969	2	2	0.530	0.530	0.909	TG-80HJ2-X	\$323.19	E

Call Us Today For All Of Your Machine Tool Needs!

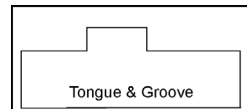
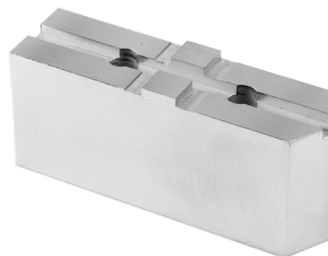
SOFT JAWS- American Standard Tongue & Groove

C

FOR USE ON: **Bison, Buck, BTC, Cushman, TMX, PBA, Yuasa & Rohm Chucks**



- American Standard Tongue & Groove
- Supplies maximum concentricity on finish turning operations
- Can be bored or turned to fit workpiece
- Steel jaws can be hardened
- Available flat ended or pointed for smaller diameter parts
- Special orders available
- Available in Aluminum, Steel
- **Made in the USA**



Group



QUANTITY DISCOUNTS!
Order **5 SETS OR MORE** of the same part number soft jaw and receive a **5% DISCOUNT!**

LATHE CHUCKS
LIVE CENTERS

WISE JAWS
WISE ACCESSORIES

STRAIGHT SHANK
COLLET HOLDERS

TAP HOLDERS
DRILL CHUCKS

CARBIDE INSERTS
THREADING/GROOVING

CUTTING TOOLS
MACHINERY

PRECISION TOOLS
DEBURRING

COOLANT/FLUIDS
TOOL STORAGE

Group No.	Chuck Size	Type	Critical Dimensions									ALUMINUM		STEEL	
			Groove Width G	Tongue Width F	Screw Size E	Hole Space D	Height Inch A	Tongue to Front J	Tongue Position	Length Inch B	Width Inch C	Flat End Part Number	Price Set of 3	Flat End Part Number	Price Set Of 3
TI-25-1/4-11	4	MED. DUTY	0.250	0.437	1/4	1.188	1.250	0.880	Offset	2.000	0.625	TG-4120AF	\$43.85	TG-4120F	\$49.30
TI-31-5/16-12	5	MEDIUM DUTY	0.313	0.500	5/16	1.250	1.500	1.100	Offset	2.375	0.750	TG-5150AF	\$37.11	TG-5150F	\$41.60
							2.000	1.100	Offset	2.375	0.750	TG-5200AF	\$44.00	TG-5200F	\$49.30
							1.500	1.350	Centered	3.200	1.000	TG-6153AF	\$43.90	TG-6153F	\$49.08
TI-31-3/8-15	6	MEDIUM DUTY	0.313	0.500	3/8	1.500	1.500	1.360	Offset	2.750	1.000	TG-6150AF	\$37.34	TG-6150F	\$30.95
							1.500	1.610	Offset	3.000	1.000	TG-6151AF	\$37.34	TG-6151F	\$36.81
							1.500	1.813	Offset	3.250	1.000	TG-6151-18AF	\$38.99	TG-6151-18F	\$37.47
							2.000	1.350	Centered	3.200	1.000	TG-6203AF	\$50.77	TG-6203F	\$55.02
							2.000	1.360	Offset	2.750	1.000	TG-6200AF	\$36.38	TG-6200F	\$41.64
							2.500	1.350	Centered	3.200	1.000	TG-6253AF	\$53.23	TG-6253F	\$55.32
							2.500	1.690	Offset	3.250	1.500	TG-6252AF	\$54.79	TG-6252F	\$60.67
							2.500	1.360	Offset	2.750	1.000	TG-6250AF	\$52.94	TG-6250F	\$55.02
							3.000	1.350	Centered	3.200	1.000	TG-6303AF	\$53.84	TG-6303F	\$55.95
							3.500	1.350	Centered	3.200	1.000	TG-6353AF	\$66.84	TG-6353F	\$72.68
							3.000	1.360	Offset	2.750	1.000	TG-6300AF	\$47.73	TG-6300F	\$50.99
							TI-31-7/16-15	6	HEAVY DUTY	0.313	0.500	7/16	1.500	4.000	1.360
1.500	1.260	Offset	2.750	1.250	TG-6155AF	\$37.40								TG-6155F	\$41.71
1.500	Center	Centered	2.813	1.500	TG-6158AF	\$72.48								TG-6158F	\$41.71
2.000	1.260	Offset	2.750	1.500	TG-6205AF	\$44.36								TG-6205F	\$49.30
2.500	1.260	Offset	2.750	1.500	TG-6255AF	\$54.87								TG-6255F	\$60.89
2.500	1.750	Offset	3.250	1.500	TG-6256AF	\$58.04								TG-6256F	\$64.34
TI-31-3/8-17	8	MEDIUM DUTY	0.313	0.500	3/8	1.750	3.000	1.260	Offset	2.750	1.500	TG-6305AF	\$55.32	TG-6305F	\$61.26
							3.500	Center	Centered	2.813	1.500	TG-6358AF	\$83.47	TG-6358F	\$71.46
							2.000	2.000	Offset	3.750	1.250	TG-8200AF	\$40.82	TG-8200F	\$32.15
							2.000	2.000	Offset	3.750	1.250	TG-8200BF	\$64.68	-	-
							2.000	2.000	Centered	4.500	1.250	TG-8203AF	\$57.77	TG-8203F	\$52.57
							2.500	2.000	Offset	3.750	1.250	TG-8250AF	\$53.07	TG-8250F	\$58.78
							2.500	2.000	Centered	4.500	1.250	TG-8253AF	\$64.71	TG-8253F	\$71.70
							3.000	2.000	Offset	3.750	1.250	TG-8300AF	\$54.91	TG-8300F	\$64.44
							3.000	2.000	Offset	3.750	1.250	TG-8300BF	\$83.50	-	-
							3.000	2.000	Centered	4.500	1.250	TG-8303AF	\$71.68	TG-8303F	\$79.28
TI-31-1/2-17	8	HEAVY DUTY	0.313	0.500	1/2	1.750	4.000	2.000	Offset	3.750	1.250	TG-8400AF	\$79.04	TG-8400F	\$83.28
							4.000	2.000	Centered	4.500	1.250	TG-8403AF	\$89.13	TG-8403F	\$87.63
							5.000	2.000	Offset	3.750	1.250	TG-8500AF	\$178.78	TG-8500F	\$201.57
							6.000	2.000	Offset	3.750	1.250	TG-8600AF	\$194.31	TG-8600F	\$219.09
							2.000	2.000	Offset	3.750	1.500	TG-8205AF	\$51.25	TG-8205F	\$50.84
							2.000	Center	Centered	3.313	1.500	TG-8208AF	\$56.39	TG-8208F	\$80.10
							3.000	2.000	Offset	3.750	1.500	TG-8305AF	\$65.13	TG-8305F	\$70.99
							3.500	Center	Centered	3.313	1.500	TG-8358AF	\$90.40	TG-8358F	\$88.45
TI-31-1/2-17	8	8" W & S	0.313	0.500	1/2	1.750	4.000	2.000	Offset	3.750	1.500	TG-8405AF	\$82.70	TG-8405F	\$91.12
							6.000	2.000	Offset	3.750	1.500	TG-8605AF	\$204.04	TG-8605F	\$230.04
							2.500	1.813	Offset	3.500	1.250	TG-8259AF	\$49.52	TG-8259F	\$54.86
							3.000	1.813	Offset	3.500	1.250	TG-8309AF	\$80.28	TG-8309F	\$89.33

For "Pointed" Soft Jaws, please substitute "P" for "F" in the part number. Example: TG-4120AF will be TG-4120AP. For Pointed Jaws add \$4.00.

Soft Jaw Material: ALUMINUM-6061-T6 Bar Stock, STEEL-1018, "B" JAWS-7075-T6 Aircraft Aluminum

For complete list of applicable chucks, see pages 542-554. * denotes non-stock item. Please allow 1 week manufacturing time.

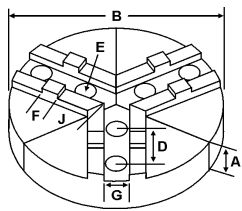
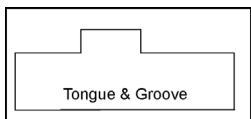
Call Us Or Visit Our Website For Our Complete Selection!

2019-20 MASTER CATALOG

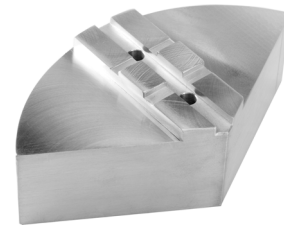
43

ROUND JAWS- American Standard Tongue & Groove

FOR USE ON: **Bison, Buck, BTC, Cushman, TMX, PBA, Yuasa & Rohm Chucks**



- American Standard Tongue & Groove
- Round Jaws allow for complete gripping of workpiece
- Oversized jaws available
- Ideal for thin-walled or irregular shaped workpieces.
- Can be machined to fit workpiece
- Special "J" dimensions available
- Available in Aluminum & Cast Iron
- **Made in the USA**



OFF-CENTER TONGUE			Critical Dimensions							ALUMINUM		CAST IRON		STEEL												
Group No.	Chuck Size	Type	Groove Width G	Tongue Width F	Screw Size E	Hole Space D	Tongue to Front J	Pie Dia B	Hght Inch A	Part Number	Price Set Of 3	Part Number	Price Set Of 3	Part Number	Price Set Of 3											
TI-50-1/2-21	10	MED. DUTY	0.500	0.750	1/2	2.125	2.200	12	5.00	12-RTG-10500A*	\$476.58	-	-	-	-											
									4.00	18-RTG-10400A*	\$851.69	-	-	-	-											
									1.900	8	4.00	8-RTG-10400A	\$176.81	-	-	-	-									
											6.00	8-RTG-10600A	\$280.91	-	-	-	-									
									2.125	2.200	10	2.00	RTG-10200A	\$136.22	RTG-10200CI	\$278.30	RTG-10200S	\$423.27								
												3.00	RTG-10300A	\$184.94	-	-	-	-								
												4.00	RTG-10400A	\$219.77	RTG-10400CI	\$494.74	RTG-10400S	\$723.69								
												5.00	RTG-10500A	\$340.12	-	-	-	-								
												6.00	-	-	-	RTG-10600S	\$1,010.88	-								
												12	2.00	12-RTG-10200A	\$184.94	-	-	-	-							
													4.00	12-RTG-10400A	\$372.23	-	-	-	-							
												15	2.50	15-RTG-10250A	\$494.11	-	-	-	-							
4.00	15-RTG-10400A	\$607.05	-	-	-	-																				
TI-50-5/8-21	10	HEAVY DUTY	0.500	0.750	5/8	2.125	2.200	10	2.00	RTG-10205A	\$160.78	RTG-10205CI	\$278.30	-	-											
									3.00	RTG-10305A*	\$240.33	-	-	-	-											
									4.00	RTG-10405A	\$243.27	RTG-10405CI	\$494.74	-	-											
									5.00	RTG-10505A*	\$340.12	-	-	-	-											
									12	2.00	12-RTG-10205A	\$184.94	-	-	-	-										
										4.00	12-RTG-10405A	\$403.54	-	-	-	-										
									15	2.50	15-RTG-10255A*	\$494.11	-	-	-	-										
										4.00	8-RTG-12400A	\$176.81	-	-	-	-										
									TI-50-1/2-25	12	MED. DUTY	0.500	0.750	1/2	2.500	1.770	8	4.00	8-RTG-12400A	\$176.81	-	-	-	-		
																		6.00	8-RTG-12600A	\$303.09	-	-	-	-		
																		2.425	10	2.00	10-RTG-12200A	\$146.86	-	-	-	-
																				4.00	10-RTG-12400A	\$255.63	-	-	-	-
3.370	12	2.00	RTG-12200A	\$184.59	RTG-12200CI	\$431.01	-	-																		
		2.50	RTG-12250A	\$197.37	-	-	-	-																		
		3.00	RTG-12300A	\$300.55	-	-	-	-																		
		4.00	RTG-12400A	\$330.34	-	-	RTG-12400S	\$964.93																		
		5.00	RTG-12500A	\$476.58	-	-	-	-																		
		15	2.50	15-RTG-12250A	\$494.11	15-RTG-12250CI	\$721.49	-										-								
			4.00	15-RTG-12400A	\$607.05	-	-	-										-								
		18	2.50	18-RTG-12250A	\$630.87	-	-	-										-								
4.00	18-RTG-12400A		\$851.69	-	-	-	-																			
21	2.50	21-RTG-12250A*	\$890.80	-	-	-	-																			
	24	2.50	24-RTG-12250A	\$1,094.92	-	-	-																			
TI-50-5/8-25	12	HEAVY DUTY	0.500	0.750	5/8	2.500	3.370	12	2.00	RTG-12205A	\$184.59	RTG-12205CI	\$431.01	-	-											
									2.50	RTG-12255A	\$234.58	-	-	-	-											
									4.00	RTG-12405A	\$403.54	-	-	-	-											
									5.00	RTG-12505A	\$476.58	-	-	-	-											
									3.350	15	2.50	15-RTG-12255A	\$494.11	15-RTG-12255CI	\$721.49	-	-									
											4.00	15-RTG-12405A	\$607.05	-	-	-	-									
									18	2.50	18-RTG-12255A	\$630.87	-	-	-	-										
										4.00	18-RTG-12405A	\$851.69	-	-	-	-										
									3.100	21	2.50	21-RTG-12405A*	\$1,135.76	-	-	-										
											4.00	21-RTG-12405A*	\$1,135.76	-	-	-	-									

Round Jaw Material: ALUMINUM-6061-T6 Bar Stock, CAST IRON-Gray, STEEL-1018, 18" & Larger- Aluminum Casting T6
For complete list of applicable chucks, see pages 542-554. * denotes non-stock item. Please allow 1 week manufacturing time.

HARD JAWS



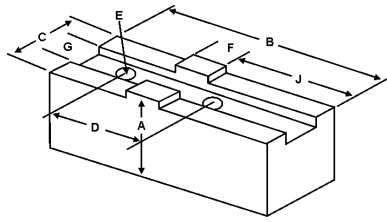
			Critical Dimensions														
Group	Chuck Size	Type	Groove Width G	Tongue Width F	Screw Size E	Hole Space D	Width Inch C	OAL Inch B	Height Inch A	No. of Holes	No. of Steps	Top Step Ht S1	Mid Step Ht S2	Bot Step Ht S3	Part Number	Price Per Set	Code
TI-50-1/2-21	10	MEDIUM DUTY	0.500	0.750	1/2	2.125	1.750	3.770	2.500	2	2	0.688	0.440	1.380	TG-100HJ2	\$378.53	D
							1.389	4.034	2.063	2	2	0.551	0.551	0.961	TG-100HJ2-U	\$323.19	E
							1.750	3.920	2.469	2	2	0.650	0.650	1.169	TG-100HJ2-X	\$340.20	E
TI-50-1/2-25	12	MEDIUM DUTY	0.500	0.750	1/2	2.500	1.750	4.500	2.500	2	2	0.680	0.440	1.380	TG-120HJ2	\$511.01	D
							1.586	4.585	2.063	2	2	0.591	0.591	0.882	TG-120HJ2-U	\$436.31	E
							1.750	4.550	2.500	2	2	0.650	0.650	1.200	TG-120HJ2-X	\$459.27	E
TI-50-5/8-25		HVY DTY	0.500	0.750	5/8	2.500	1.750	4.550	2.500	2	2	0.650	0.650	1.200	TG-125HJ2-X	\$493.29	E

Call Us Today For All Of Your Machine Tool Needs!

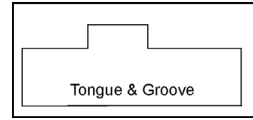
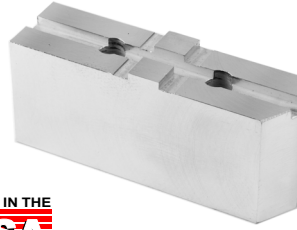
SOFT JAWS- American Standard Tongue & Groove

C

FOR USE ON: **Bison, Buck, BTC, Cushman, TMX, PBA, Yuasa & Rohm Chucks**



- American Standard Tongue & Groove
- Supplies maximum concentricity on finish turning operations
- Can be bored or turned to fit workpiece
- Steel jaws can be hardened
- Available flat ended or pointed for smaller diameter parts
- Special orders available
- Available in Aluminum & Steel
- Made in the USA



QUANTITY DISCOUNTS!
Order **5 SETS OR MORE** of the same part number soft jaw and receive a **5% DISCOUNT!**

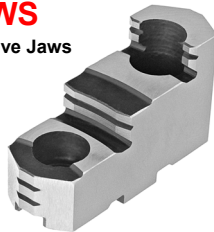


Group No.	Chuck Size	Type	Critical Dimensions				ALUMINUM					STEEL			
			Groove Width G	Tongue Width F	Screw Size E	Hole Space D	Height Inch A	Tongue to Front J	Tongue Position	Length Inch B	Width Inch C	Flat End Part Number	Price Set of 3	Flat End Part Number	Price Set of 3
TI-50-1/2-21	10	MEDIUM DUTY	0.500	0.750	1/2	2.125	2.00	2.300	Offset	4.500	1.500	TG-10200AF	\$48.95	TG-10200F	\$33.83
							2.00	2.300	Offset	4.500	1.500	TG-10200BF	\$74.04	-	-
							2.00	2.300	Offset	4.500	2.000	TG-10202AF	\$62.26	TG-10202F	\$64.69
							2.00	2.625	Centered	6.000	2.000	TG-10203AF	\$90.07	TG-10203F	\$56.95
							2.50	2.300	Offset	4.500	1.500	TG-10250AF	\$58.53	TG-10250F	\$64.44
							3.00	2.300	Offset	4.500	1.500	TG-10300AF	\$65.00	TG-10300F	\$72.05
							3.00	2.300	Offset	4.500	2.000	TG-10302AF	\$78.74	TG-10302F	\$86.36
							3.00	2.625	Centered	6.000	2.000	TG-10303AF	\$98.70	TG-10303F	\$108.06
							4.00	2.300	Offset	4.500	1.500	TG-10400AF	\$72.48	TG-10400F	\$75.33
4.00	2.625	Centered	6.000	2.000	TG-10403AF	\$133.30	TG-10403F	\$87.63							
TI-50-5/8-21	10	HEAVY DUTY	0.500	0.750	5/8	2.125	2.00	2.300	Offset	4.500	1.750	TG-10205AF	\$54.97	TG-10205F	\$60.57
							2.00	Center	Centered	3.938	1.750	TG-10208AF	\$47.76	TG-10208F	\$50.76
							2.50	2.300	Offset	4.500	1.750	TG-10255AF	\$63.45	TG-10255F	\$69.75
							3.00	2.300	Offset	4.500	1.750	TG-10305AF	\$69.04	TG-10305F	\$75.71
							4.00	2.300	Offset	4.500	1.750	TG-10405AF	\$83.13	TG-10405F	\$90.89
							4.00	Center	Centered	3.938	1.750	TG-10408AF	\$104.24	TG-10408F	\$99.52
							2.50	2.125	Offset	4.250	1.750	TG-10259AF	\$62.41	TG-10259F	\$56.63
TI-50-1/2-25	12	MEDIUM DUTY	0.500	0.750	1/2	2.500	2.00	2.900	Offset	5.250	1.750	TG-12200AF	\$62.00	TG-12200F	\$54.75
							2.00	2.900	Centered	6.550	1.750	TG-12203AF	\$88.15	TG-12203F	\$70.11
							2.50	2.900	Offset	5.250	1.750	TG-12250AF	\$69.81	TG-12250F	\$72.22
							2.50	2.900	Centered	6.550	1.750	TG-12253AF	\$103.74	TG-12253F	\$114.39
							2.50	3.670	Offset	6.000	2.000	TG-12252AF	\$89.83	TG-12252F	\$76.79
							2.50	Center	Centered	4.500	2.000	TG-12258AF	\$71.28	TG-12258F	\$82.04
							3.00	2.900	Offset	5.250	1.750	TG-12300AF	\$79.56	TG-12300F	\$87.22
							3.00	2.900	Centered	6.550	1.750	TG-12303AF	\$121.03	TG-12303F	\$133.33
							4.00	2.900	Offset	5.250	1.750	TG-12400AF	\$93.72	TG-12400F	\$102.35
							4.00	2.900	Centered	6.550	1.750	TG-12403AF	\$138.76	TG-12403F	\$145.94
							4.00	3.670	Offset	6.000	2.000	TG-12402AF	\$133.30	TG-12402F	\$145.98
							4.00	Center	Centered	4.500	2.000	TG-12408AF	\$85.44	TG-12408F	\$93.08
							6.00	2.900	Offset	5.250	1.750	TG-12600AF	\$216.83	TG-12600F	\$239.24
6.00	3.670	Offset	6.000	2.000	TG-12602AF	\$292.29	TG-12602F	\$312.86							
TI-50-5/8-25	12	12" W & S	0.500	0.750	5/8	2.500	2.50	2.500	Offset	4.875	1.750	TG-12259AF	\$69.66	TG-12259F	\$74.88
							4.00	2.500	Offset	4.875	1.750	TG-12409AF	\$107.26	TG-12409F	\$117.86
							2.00	2.900	Offset	5.250	2.000	TG-12205AF	\$65.38	TG-12205F	\$71.83
TI-50-5/8-25	12	HEAVY DUTY	0.500	0.750	5/8	2.500	2.50	2.900	Offset	5.250	2.000	TG-12255AF	\$73.03	TG-12255F	\$76.14
							2.50	3.670	Offset	6.000	2.000	TG-12256AF	\$94.95	TG-12256F	\$104.72
							3.00	2.900	Offset	5.250	2.000	TG-12305AF	\$87.61	TG-12305F	\$95.93
							4.00	2.900	Offset	5.250	2.000	TG-12405AF	\$96.05	TG-12405F	\$104.25
							4.00	3.670	Offset	6.000	2.000	TG-12406AF	\$133.30	TG-12406F	\$145.98
							4.00	3.670	Offset	6.000	2.000	TG-12407AF	\$133.30	TG-12407F	\$145.98

For "Pointed" Soft Jaws, please substitute "P" for "F" in the part number. Example: TG-10200AF will be TG-10200AP. Pointed Jaws: Up to 10" add \$4.00, 12" & over add \$7.00.
Soft Jaw Material: ALUMINUM-6061-T6 Bar Stock, STEEL-1018, "B" JAWS-7075-T6 Aircraft Aluminum
For complete list of applicable chucks, see pages 542-554. * denotes non-stock item. Please allow 1 week manufacturing time.

OEM HARD TOP JAWS

American Standard Tongue & Groove Jaws



Chuck Dia	Groove Width	Tongue Width	OAL	Height	3-Jaw Chucks		4-Jaw Chucks	
					Part Number	Price Per Set	Part Number	Price Per Set
5"	0.313	0.500	2.205	1.516	TG-50HJ2-BI	\$188.10	TG-50HJ2-4-BI	\$300.60
6"	0.313	0.500	2.638	1.634	TG-60HJ2-BI	\$230.40	TG-60HJ2-4-BI	\$306.90
8"	0.313	0.500	3.347	1.713	TG-80HJ2-BI	\$232.20	TG-80HJ2-4-BI	\$364.50
10"	0.500	0.750	3.740	2.023	TG-100HJ2-BI	\$271.80	TG-100HJ2-4-BI	\$380.70
12"	0.500	0.750	4.331	2.165	TG-120HJ2-BI	\$334.80	TG-120HJ2-4-BI	\$468.00
15-3/4"	0.500	0.750	5.000	2.539	TG-150HJ2-BI	\$456.30	TG-150HJ2-4-BI	\$639.00

Call Us Or Visit Our Website For Our Complete Selection!

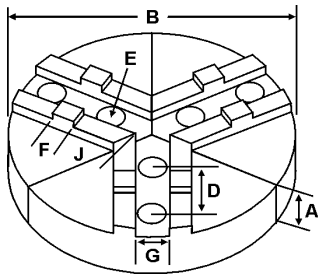
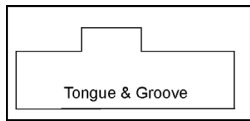
2019-20 MASTER CATALOG

45

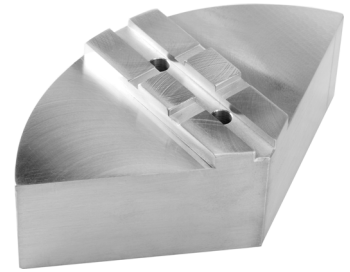
LATHE CHUCKS
LIVE CENTERS
VISE JAWS
VISE ACCESSORIES
STRAIGHT SHANK
COLLET HOLDERS
TAP HOLDERS
DRILL CHUCKS
CARBIDE INSERTS
THREADING/GROOVING
CUTTING TOOLS
MACHINERY
PRECISION TOOLS
DEBURRING
COOLANT/FLUIDS
TOOL STORAGE

ROUND JAWS- American Standard Tongue & Groove

FOR USE ON: **Bison, Buck, BTC, Cushman, TMX, PBA, Yuasa & Rohm Chucks**



- American Standard Tongue & Groove
- Round Jaws allow for complete gripping of workpiece
- Oversized jaws available
- Ideal for thin-walled or irregular shaped workpieces.
- Can be machined to fit workpiece
- All jaws have 2 holes
- Special "J" dimensions available
- Available in Aluminum & Cast Iron
- Made in the USA

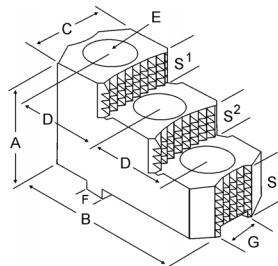
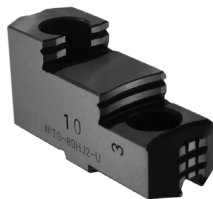


OFF-CENTER TONGUE

Group No.	Chuck Size	Type	Critical Dimensions				Tongue to Front J	Pie Dia B	Hght Inch A	ALUMINUM		CAST IRON/STEEL	
			Groove Width G	Tongue Width F	Screw Size E	Hole Space D				Part Number	Price Set Of 3	Part Number	Price Set Of 3
TI-50-5/8-30	15	MEDIUM DUTY	0.500	0.750	5/8	3.000	3.370	12	2.00	12-RTG-15200A	\$215.37	-	-
									4.00	12-RTG-15400A	\$427.41	-	-
							3.785	15	2.50	RTG-15250A	\$494.11	RTG-15250CI	\$721.49
									4.00	RTG-15400A	\$607.05	RTG-15400S	\$1,521.63
									5.00	RTG-15500A*	\$948.92	-	-
							4.100	18	2.50	18-RTG-15250A	\$618.85	-	-
									4.00	18-RTG-15400A	\$851.69	-	-
							4.550	21	2.50	21-RTG-15250A	\$908.09	-	-
									4.00	21-RTG-15400A	\$1,135.76	-	-
							3.825	24	2.50	24-RTG-15250A	\$1,074.06	-	-
4.00	24-RTG-15400A	\$1,550.55	-	-									
TI-50-3/4-30	15	HEAVY DUTY	0.500	0.750	3/4	3.000	3.785	15	2.50	RTG-15255A	\$494.11	RTG-15255CI	\$721.49
									4.00	RTG-15405A	\$607.05	-	-
									5.00	RTG-15505A*	\$948.92	-	-
							4.100	18	2.50	18-RTG-15255A	\$618.85	-	-
									4.00	18-RTG-15405A	\$851.69	-	-
							4.550	21	2.50	21-RTG-15255A	\$908.09	-	-
									4.00	21-RTG-15405A	\$1,135.76	-	-
							3.785	24	2.50	24-RTG-15255A	\$1,074.06	-	-
									4.00	24-RTG-15405A	\$1,550.55	-	-
							TI-50-7/8-30	18 & Up	HEAVY DUTY	0.500	0.750	7/8	3.000
6.00	12-RTG-18600A*	\$627.94	-	-									
5.100	18	2.50	RTG-18250A	\$618.85	-	-							
		4.00	RTG-18400A	\$851.69	-	-							
5.100	21	2.50	21-RTG-18250A	\$908.09	-	-							
		4.00	21-RTG-18400A	\$1,135.76	-	-							
5.100	24	2.50	24-RTG-18250A	\$1,074.06	-	-							
		4.00	24-RTG-18400A	\$1,550.55	-	-							
5.000	24	4.00	RTG-24400A	\$1,550.55	-	-							

Round Jaw Material: ALUMINUM-6061-T6 Bar Stock, CAST IRON-Gray, STEEL-1018, 18" & Larger- Aluminum Casting T6
For complete list of applicable chucks, see pages 542-554.* denotes non-stock item. Please allow 1 week manufacturing time.

HARD JAWS-2 STEP



FEATURES:

- Designed for first operation roughing, expect standard runout between 0.005-0.010
- Reversible-suitable for OD & ID workholding.
- GRIP-RITE-OEM style hard jaws have ground tips and provide better runout.
- XTRA BITE -very aggressive bite. Has conical teeth for extra gripping power and ground body to provide improved runout.

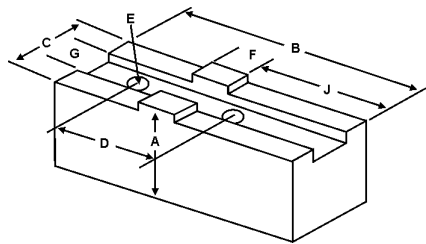
Group	Chuck Size	Type	Critical Dimensions				Width Inch C	OAL Inch B	Height Inch A	No. of Holes	No. of Steps	Top Step Ht S1	Mid Step Ht S2	Bot Step Ht S3	Part Number	Price Per Set	Code
			Groove Width G	Tongue Width F	Screw Size E	Hole Space D											
TI-50-5/8-30	15 & UP	MEDIUM DUTY	0.500	0.750	5/8	3.000	1.980	5.392	2.613	2	2	0.551	0.551	1.511	TG-150HJ2-U	\$533.26	E
							2.500	5.350	3.469	2	2	0.950	0.950	1.569	TG-150HJ2-X	\$561.33	E
TI-50-3/4-30	15 & UP	HEAVY DUTY	0.500	0.750	3/4	3.000	2.500	5.350	3.469	2	2	0.950	0.950	1.569	TG-155HJ2-X	\$623.70	E

Call Us Today For All Of Your Machine Tool Needs!

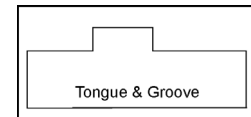
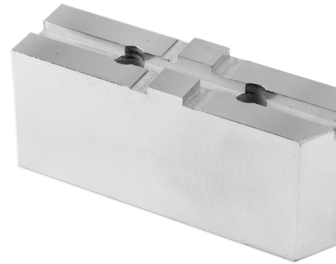
SOFT JAWS- American Standard Tongue & Groove

C

FOR USE ON: **Bison, Buck, BTC, Cushman, TMX, PBA, Yuasa & Rohm Chucks**



- American Standard Tongue & Groove
- Supplies maximum concentricity on finish turning operations
- Can be bored or turned to fit workpiece
- Steel jaws can be hardened
- Available flat ended or pointed for smaller diameter parts
- Special orders available
- Available in Aluminum & Steel
- Made in the USA



QUANTITY DISCOUNTS!
Order **5 SETS OR MORE** of the same part number soft jaw and receive a **5% DISCOUNT!**

LATHE CHUCKS
LIVE CENTERS

WISE JAWS
WISE ACCESSORIES

STRAIGHT SHANK
COLLET HOLDERS

TAP HOLDERS
DRILL CHUCKS

CARBIDE INSERTS
THREADING/GROOVING

CUTTING TOOLS
MACHINERY

PRECISION TOOLS
DEBURRING

COOLANT/FLUIDS
TOOL STORAGE

Group No.	Chuck Size	Type	Critical Dimensions				ALUMINUM					STEEL			
			Groove Width G	Tongue Width F	Screw Size E	Hole Space D	Height Inch A	Tongue to Front J	Tongue Position	Length Inch B	Width Inch C	Flat End Part Number	Price Set of 3	Flat End Part Number	Price Set of 3
TI-50-5/8-30	15	MEDIUM DUTY	0.500	0.750	5/8	3.000	1.50	2.900	Offset	5.750	1.750	TG-15150AF	\$97.24	TG-15150F	\$108.29
							2.00	2.900	Offset	5.750	1.750	TG-15200AF	\$68.87	TG-15200F	\$75.83
							2.50	2.900	Offset	5.750	1.750	TG-15250AF	\$79.35	TG-15250F	\$87.22
							2.50	2.900	Offset	6.250	2.000	TG-15252AF	\$94.99	TG-15252F	\$104.25
							2.50	Center	Centered	5.188	2.500	TG-15258AF	\$90.92	TG-15258F	\$97.51
							3.00	2.900	Offset	5.750	1.750	TG-15300AF	\$93.22	TG-15300F	\$102.35
							4.00	2.900	Offset	5.750	1.750	TG-15400AF	\$104.09	TG-15400F	\$113.74
TI-50-3/4-30	15	15" W&S	0.500	0.750	3/4	3.000	3.50	3.000	Offset	5.750	2.000	TG-15359AF	\$112.74	TG-15359F	\$123.47
							5.00	3.000	Offset	5.750	2.000	TG-15509AF	\$161.06	TG-15509F	\$176.39
							2.50	2.900	Offset	5.750	1.750	TG-15255AF	\$82.72	TG-15255F	\$90.98
							2.50	3.200	Offset	6.000	2.500	TG-15256AF	\$95.46	TG-15256F	\$104.25
							3.00	2.900	Offset	5.750	1.750	TG-15305AF	\$86.48	TG-15305F	\$97.49
TI-50-3/4-30	15	HEAVY DUTY	0.500	0.750	3/4	3.000	4.00	2.900	Offset	5.750	1.750	TG-15405AF	\$107.46	TG-15405F	\$117.53
							4.00	3.200	Offset	6.000	2.500	TG-15406AF	\$130.89	TG-15406F	\$142.17
							2.50	3.660	Offset	6.500	2.250	TG-18250AF	\$103.80	TG-18250F	\$113.74
							2.50	3.660	Offset	6.500	2.500	TG-18252AF	\$129.34	TG-18252F	\$142.17
TI-50-3/4-30	18	HEAVY DUTY	0.500	0.750	3/4	3.000	2.50	3.660	Offset	6.500	3.000	TG-18256AF	\$137.76	TG-18256F	\$151.64
							3.00	CENTER	Centered	5.188	3.000	TG-18308AF	\$200.87	TG-18308F	\$222.22
							4.00	3.660	Offset	6.500	2.250	TG-18400AF	\$139.19	TG-18400F	\$151.64
							4.00	3.660	Offset	6.500	2.500	TG-18402AF	\$139.30	TG-18402F	\$157.06
							5.00	3.660	Offset	6.500	2.250	TG-18500AF	\$126.09	TG-18500F	\$208.37
							5.00	3.660	Offset	6.500	2.500	TG-18502AF	\$251.09	TG-18502F	\$226.11
							5.00	3.660	Offset	6.500	3.000	TG-18506AF	\$191.46	TG-18506F	\$294.45
							5.00	CENTER	Centered	5.188	3.000	TG-18508AF	\$261.17	TG-18508F	\$237.83
TI-50-3/4-30	18	18" W&S	0.500	0.750	3/4	3.000	3.50	3.000	Offset	6.000	2.500	TG-18359AF	\$168.72	TG-18359F	\$185.49
							5.00	3.000	Offset	6.000	2.500	TG-18509AF	\$241.04	TG-18509F	\$265.02
TI-50-7/8-30	24	HEAVY DUTY	0.500	0.750	7/8	3.000	3.000	4.500	Offset	7.500	3.000	TG-24300AF	\$288.48	TG-24300F	\$291.15
							5.000	4.500	Offset	7.500	3.000	TG-24500AF	\$380.68	TG-24500F	\$384.07

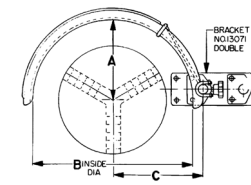
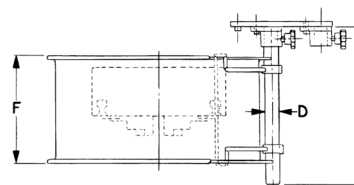
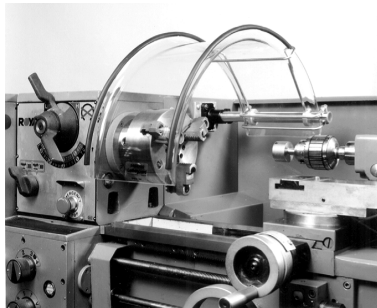
For "Pointed" Soft Jaws, please substitute "P" for "F" in the part number. Example: TG-15150AF will be TG-15150AP. For Pointed Jaws add \$7.00.

Soft Jaw Material: ALUMINUM-6061-T6 Bar Stock, STEEL-1018, "B" JAWS-7075-T6 Aircraft Aluminum

For complete list of applicable chucks, see pages 542-554. * denotes non-stock item. Please allow 1 week manufacturing time.

LATHEGUARDS

- Clear LEXAN, Semi-Circular wrap-a-round guards
- Heavy Duty Chrome-plated extension tube and hardware
- Ready to mount; all you do is affix mounting bracket with screws
- Back of shield is reinforced with plated wire-form housing
- Accepts 3 or 4-Jaw Chucks
- Included mounting bracket



Lathe Size	Cnt Ht. (Shield Height)	For Use With Chucks Up To (A)	Shield Width F	Shield Length B	Tube Length E	Part Number	Price
Small	3.9"	6" Dia	6 1/4"	7.8"	10"	FXB-12999	\$139.50
6 to 12	6"	8" Dia	6 1/4"	11.8"	10"	FXB-13060	\$156.00
12 to 16	8"	12" Dia	8"	15.8"	11 1/2"	FXB-13061	\$175.00
16 to 20	10"	16" Dia	8"	19.70"	13"	FXB-13062	\$189.00
20 to 24	13"	20" Dia	8"	23.6"	13"	FXB-13064	\$225.00

Full Line Available!
Please call for more information.

Call Us Or Visit Our Website For Our Complete Selection!

2019-20 MASTER CATALOG