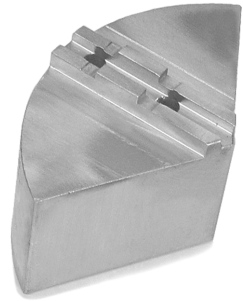
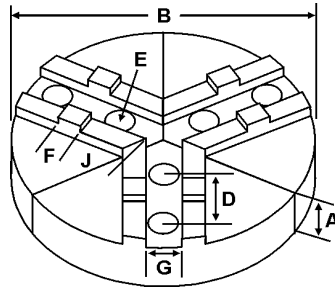
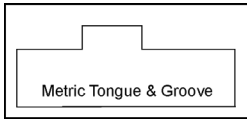


# ROUND JAWS- Metric Tongue & Groove

FOR USE ON: **SMW Autoblok KNCS, SMW Systems, Schunk, Rohm Chucks Using GBK Master Base Jaws**



Group



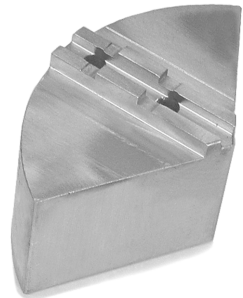
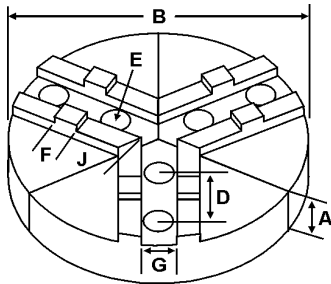
OFF CENTER TONGUE

- Metric Tongue & Groove
- Round Jaws allow for complete gripping of workpiece
- Oversized jaws available
- Ideal for thin-walled or irregular shaped workpieces.
- Can be machined to fit workpiece
- All jaws have 2 holes
- Special "J" dimensions available
- Available in Aluminum & Steel
- Made in the USA

Group No.	Chuck Size	Critical Dimensions						ALUMINUM			STEEL		
		Groove Width G	Tongue Width F	Screw Size E	Hole Space D	Tongue to Front J	Pie Dia B	Hght Inch A	Part Number	Price Set Of 3	Part Number	Price Set Of 3	
TK-08-08-32	5 1/2 to 6	0.315 (8mm)	0.709	8mm	1.260 (32mm)	1.380	6	2.00	6-RWK-5200A	\$83.92	6-RWK-5200S	\$192.79	
								3.00	6-RWK-5300A	\$114.33	6-RWK-5300S	\$245.37	
								2.00	RWK-6200A	\$83.92	RWK-6200S	\$192.79	
								3.00	RWK-6300A	\$114.33	RWK-6300S	\$213.37	
TK-10-08-40	8	0.393 (10mm)	0.787	8mm	1.575 (40mm)	1.360	8	2.00	RWK-8200A	\$126.29	RWK-8200S	\$294.45	
								3.00	RWK-8300A	\$154.01	RWK-8300S	\$404.87	
TK-12-12-40	10	0.472 (12mm)	0.787	12mm	1.575 (40mm)	2.050	10	2.00	RWK-10200A	\$165.73	RWK-10200S	\$423.27	
								10	3.00	RWK-10300A	\$194.32	RWK-10300S	\$552.10
								10	4.00	RWK-10400A*	\$227.12	-	-
								12	3.00	12-RWK-10300A	\$299.99	-	-
								12	4.00	12-RWK-10400A	\$378.93	-	-
								15	2.50	15-RWK-10250A	\$494.17	-	-
								15	4.00	15-RWK-10400A*	\$564.72	-	-
TK-12-12-54	12 to 16	0.472 (12mm)	1.023	12mm	2.126 (54mm)	2.950	12	2.00	RWK-12200A	\$215.37	-	-	
								3.00	RWK-12300A	\$299.99	-	-	
								18	2.50	18-RWK-12250A*	\$606.70	-	-
									2.50	18-RWK-12250A*	\$606.70	-	-

Round Jaw Material: ALUMINUM-6061-T6 Bar Stock, CAST IRON-Gray, STEEL-1018. 18" & Larger- Aluminum Casting T6  
For complete list of applicable chucks, see pages 542-554. \* denotes non-stock item. Please allow 1 week manufacturing time.

FOR USE ON: **Forkardt, Rohm & SMW Chucks**



- Metric Tongue & Groove
- Round Jaws allow for complete gripping of workpiece
- Oversized jaws available
- Ideal for thin-walled or irregular shaped workpieces.
- Can be machined to fit workpiece
- All jaws have 2 holes
- Special "J" dimensions available
- Available in Aluminum & Steel
- Made in the USA

Group No.	Chuck Size	Critical Dimensions						ALUMINUM			STEEL	
		Groove Width G	Tongue Width F	Screw Size E	Hole Space D	Tongue to Front J	Pie Dia B	Hght Inch A	Part Number	Price Set Of 3	Part Number	Price Set Of 3
TK-08-5/16-32	6	0.315 (8mm)	0.708	5/16	1.260 (32mm)	1.380	6	2.00	RSW-6200A	\$83.92	RSW-6200S	\$167.64
								3.00	RSW-6300A	\$114.33	RSW-6300S	\$213.37
TK-10-5/16-40	8	0.393 (10mm)	0.787	5/16	1.575 (40mm)	2.000	8	2.00	RSW-8200A	\$126.29	RSW-8200S	\$294.45
								3.00	RSW-8300A	\$154.01	RSW-8300S	\$404.87
TK-12-1/2-40	10	0.472 (12mm)	0.787	1/2	1.575 (40mm)	2.400	10	2.00	RSW-10200A	\$165.73	RSW-10200S	\$350.53
								3.00	RSW-10300A	\$204.03	RSW-10300S	\$457.22
								4.00	RSW-10400A*	\$227.12	-	-
TK-12-1/2-54	12	0.472 (12mm)	1.023	1/2	2.126 (54mm)	2.950	12	2.00	RSW-12200A	\$215.37	-	-
								3.00	RSW-12300A	\$299.99	-	-

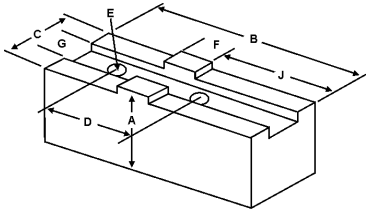
Round Jaw Material: ALUMINUM-6061-T6 Bar Stock, CAST IRON-Gray, STEEL-1018  
For complete list of applicable chucks, see pages 542-554. \* denotes non-stock item. Please allow 1 week manufacturing time.

Call Us Today For All Of Your Machine Tool Needs!

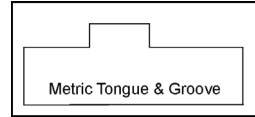
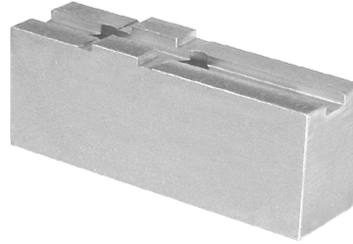
# SOFT JAWS- Metric Tongue & Groove

C

FOR USE ON: **SMW Autoblok KNCS, SMW Systems, Schunk, Rohm Chucks**  
Using GBK Master Base Jaws



- **Metric tongue & groove**
- Supplies maximum concentricity on finish turning operations
- Can be bored or turned to fit workpiece
- Steel jaws can be hardened
- Available flat ended or pointed for smaller diameter parts
- Special orders available
- Available in Aluminum & Steel
- **Made in the USA**



**QUANTITY DISCOUNTS!**  
Order **5 SETS OR MORE** of the same part number soft jaw and receive a **5% DISCOUNT!**

LATHE CHUCKS  
LIVE CENTERS

VICE JAWS  
VICE ACCESSORIES

STRAIGHT SHANK  
COLLET HOLDERS

TAP HOLDERS  
DRILL CHUCKS

CARBIDE INSERTS  
THREADING/GROOVING

CUTTING TOOLS  
MACHINERY

PRECISION TOOLS  
DEBURRING

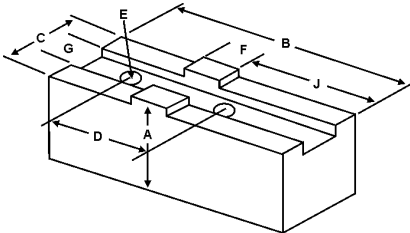
COOLANT/FLUIDS  
TOOL STORAGE

## CENTERED & OFFSET TONGUE

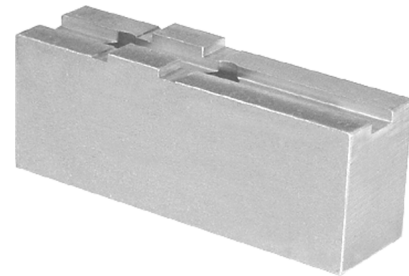
Group No.	Chuck Size	Critical Dimensions				ALUMINUM					STEEL			
		Groove Width G	Tongue Width F	Screw Size E	Hole Space D	Hght Inch A	Tongue to Front J	Tongue Position	Width Inch C	Length Inch B	FLAT END Part Number	Price Set Of 3	FLAT END Part Number	Price Set Of 3
TK-08-08-32	5-1/2	0.315 (8mm)	0.709	8mm	1.260 (32mm)	1.50	1.380	Offset	0.750	2.750	WK-5150AF	\$42.81	WK-5150F	\$48.01
						1.50	0.895	Centered	1.500	2.500	WK-5152AF	\$64.26	WK-5152F	\$72.03
						1.50	1.380	Offset	0.750	2.750	WK-6150AF	\$42.81	WK-6150F	\$48.01
	6	0.315 (8mm)	0.709	8mm	1.260 (32mm)	1.50	0.895	Centered	1.500	2.500	WK-6152AF	\$64.26	WK-6152F	\$72.03
						2.00	1.380	Offset	0.750	2.750	WK-6200AF*	\$74.34	-	-
						1.50	1.670	Offset	0.750	3.375	WK-7150AF	\$49.97	WK-7150F	\$56.02
7	0.315 (8mm)	0.709	8mm	1.260 (32mm)	1.50	1.000	Offset	1.500	2.500	WK-7152AF	\$64.26	WK-7152F	\$72.03	
					2.00	0.920	Offset	1.000	4.125	WK-8200AF	\$64.46	WK-8200F	\$72.03	
TK-10-08-40	8	0.393 (10mm)	0.787	8mm	1.575 (40mm)	2.00	0.980	Centered	1.750	2.750	WK-8202AF	\$71.65	WK-8202F	\$80.02
						2.50	1.500	Offset	2.250	3.500	WK-10252AF	\$93.64	WK-10252F	\$104.03
TK-12-12-40	10	0.472 (12mm)	0.787	12mm	1.575 (40mm)	2.00	1.990	Centered	1.250	5.000	WK-12200AF	\$71.83	WK-12200F	\$80.02
						2.25	3.230	Offset	1.500	5.750	WK-16220AF	\$97.88	WK-16220F	\$108.82
TK-12-12-54	12 - 16	0.472 (12mm)	1.023	12mm	2.126 (54mm)	2.50	1.400	Offset	3.000	3.500	WK-12252AF	\$122.48	WK-12252F	\$136.04
						3.00	1.750	Offset	3.000	4.000	WK-16302AF	\$133.09	WK-16302F	\$147.23
						3.00	3.000	Offset	1.750	7.000	WK-24300AF*	\$103.18	-	-
TK-18-16-60	18 - 24	0.708 (18mm)	1.180	16mm	2.362 (60mm)	3.00	3.000	Offset	4.000	6.000	WK-24302AF*	\$266.17	-	-
						3.00	3.000	Offset	4.000	6.000	WK-24302AF*	\$266.17	-	-

For "Pointed" Soft Jaws, please substitute "P" for "F" in the part number. Example: WK-5150AF will be WK-5150AP. Pointed Jaws: Up to 10" add \$4.00, 12" & over add \$7.00.  
Soft Jaw Material: ALUMINUM-6061-T6 Bar Stock, STEEL-1018, "B" JAWS-7075-T6 Aircraft Aluminum  
For complete list of applicable chucks, see pages 542-554. \* denotes non-stock item. Please allow 1 week manufacturing time.

## FOR USE ON: Forkardt, Rohm & SMW Chucks



**QUANTITY DISCOUNTS!**  
Order **5 SETS OR MORE** of the same part number soft jaw and receive a **5% DISCOUNT!**



## OFF-CENTERED TONGUE

Group No.	Chuck Size	Critical Dimensions				ALUMINUM					STEEL			
		Groove Width G	Tongue Width F	Screw Size E	Hole Space D	Hght Inch A	Tongue to Front J	Tongue Position	Width Inch C	Length Inch B	FLAT END Part Number	Price Set Of 3	FLAT END Part Number	Price Set Of 3
TK-08-5/16-32	6	0.315 (8mm)	0.708	5/16	1.260 (32mm)	1.50	1.660	Offset	0.750	3.375	SW-6150AF	\$37.17	SW-6150F	\$41.62
						3.00	1.660	Offset	0.750	3.375	SW-6300AF	\$51.62	SW-6300F	\$57.62
TK-10-5/16-40	8	0.393 (10mm)	0.787	5/16	1.575 (40mm)	2.00	1.970	Offset	1.250	4.125	SW-8200AF	\$51.83	SW-8200F	\$57.62
						4.00	1.970	Offset	1.250	4.125	SW-8400AF	\$69.58	SW-8400F	\$76.82
TK-12-1/2-40	10	0.472 (12mm)	0.787	1/2	1.575 (40mm)	2.00	2.750	Offset	1.500	5.000	SW-10200AF	\$64.92	SW-10200F	\$72.03
						4.00	2.750	Offset	1.500	5.000	SW-10400AF	\$81.57	SW-10400F	\$89.61
TK-12-1/2-54	12	0.472 (12mm)	1.023	1/2	2.126 (54mm)	2.00	2.937	Offset	1.750	5.750	SW-12200AF	\$69.55	SW-12200F	\$76.82
						4.00	2.937	Offset	1.750	5.750	SW-12400AF	\$87.96	SW-12400F	\$96.01
TK-18-5/8-60	16	0.708 (18mm)	1.181	5/8	2.362 (60mm)	3.00	3.937	Offset	2.000	7.250	SW-16300AF	\$109.49	SW-16300F	\$120.03
						5.00	3.937	Offset	2.000	7.250	SW-16500AF	\$132.79	SW-16500F	\$144.03

For "Pointed" Soft Jaws, please substitute "P" for "F" in the part number. Example: SW-6150AF will be SW-6150AP. Pointed Jaws: Up to 10" add \$4.00, 12" & over add \$7.00.  
Soft Jaw Material: ALUMINUM-6061-T6 Bar Stock, STEEL-1018, "B" JAWS-7075-T6 Aircraft Aluminum  
For complete list of applicable chucks, see pages 542-554. \* denotes non-stock item. Please allow 1 week manufacturing time.

Call Us Or Visit Our Website For Our Complete Selection!

2019-20 MASTER CATALOG