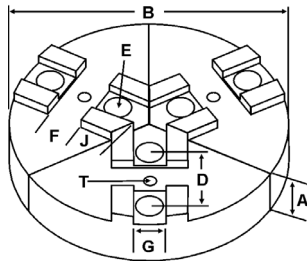
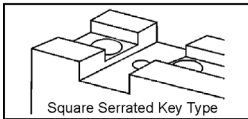
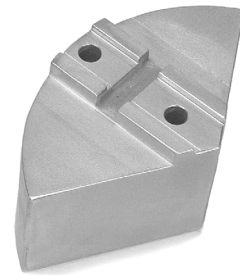


ROUND JAWS- Square Serrated Key Type

FOR USE ON: **S.P., Pratt Burnerd, Warner & Swasey & Other Chucks**



- **Square Serrated Key Type**
- Round Jaws allow for complete gripping of workpiece
- Oversized jaws available
- Ideal for thin-walled or irregular shaped workpieces.
- Can be machined to fit workpiece
- All jaws have 2 holes
- Special "J" dimensions available
- Available in Aluminum & Cast Iron
- **Made in the USA**



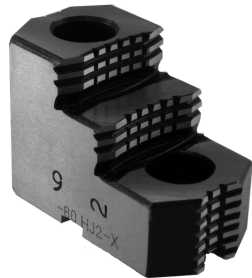
Group



Group No.	Chuck Size	Tap Hole T	Critical Dimensions				Key to Front J	Pie Dia B	Hght Inch A	ALUMINUM		CAST IRON		STEEL	
			Groove Width G	Key Width F	Screw Size E	Hole Space D				Part Number	Price Set Of 3	Part Number	Price Set Of 3	Part Number	Price Set Of 3
SI-07-5/16-16	6	NONE	0.738	0.377	5/16	1.688	1.40	6	2.00	RSP-6200A*	\$77.72	RSP-6200CI*	\$144.31	-	-
									4.00	RSP-6400A*	\$131.58	-	-	-	-
									8	8-RSP-6200A*	\$126.29	-	-	-	-
SI-05-3/8-14	8	1/4-20	0.501	0.745	3/8	1.438	2.00	8	2.00	RSP-8200A	\$126.29	RSP-8200CI	\$185.53	-	-
									4.00	RSP-8400A	\$176.81	RSP-8400CI	\$350.44	-	-
									12	12-RSP-8200A*	\$215.37	-	-	-	-
SI-06-1/2-12	8	10-32	0.670	0.601	1/2	1.250	2.00	8	2.00	-	-	RSP-8202CI	\$185.53	-	-
									4.00	RSP-8205A	\$126.29	RSP-8205CI	\$185.53	-	-
SI-07-1/2-14	8	1/4-20	0.751	0.745	1/2	1.438	2.00	8	4.00	RSP-8405A	\$176.81	RSP-8405CI	\$350.44	-	-
									2.00	-	-	-	-	-	-
SI-07-1/2-17	10 to 12	5/16-18	0.751	0.994	1/2	1.750	2.50	10	2.00	RSP-10200A	\$165.73	RSP-10200CI	\$278.30	RSP-10200S	\$423.27
									4.00	RSP-10400A	\$255.63	RSP-10400CI	\$494.74	-	-
									2.00	RSP-12200A	\$215.37	RSP-12200CI	\$431.01	-	-
									4.00	RSP-12400A	\$427.41	-	-	-	-
SI-07-5/8-17	10 to 12	5/16-18	0.751	0.994	5/8	1.750	3.75	12	2.00	RSP-12205A	\$215.37	RSP-12205CI	\$431.01	-	-
									4.00	RSP-12405A	\$427.41	-	-	-	-
									4.00	15-RSP-12405A	\$564.72	-	-	-	-
									12	12-RSP-15200A	\$215.37	-	-	-	-
SI-10-3/4-25	15 to 18	3/8-16	1.001	1.488	3/4	2.500	3.10	12	2.50	RSP-15250A	\$462.21	-	-	-	-
									4.00	RSP-15400A	\$609.00	-	-	-	-
									4.00	-	-	-	-	-	-

Round Jaw Material: ALUMINUM-6061-T6 Bar Stock, CAST IRON-Gray, STEEL-1018. 18" & Larger- Aluminum Casting T6
For complete list of applicable chucks, see pages 542-554. * denotes non-stock item. Please allow 1 week manufacturing time.

SQUARE KEY SERRATED HARD JAWS

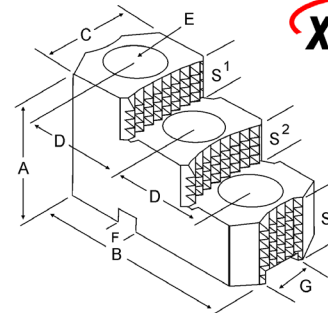


FEATURES:

- Designed for first operation roughing, expect standard runout between **0.005-0.010**
- Reversible-suitable for OD & ID workholding.
- **XTRA BITE** -very aggressive bite. Has conical teeth for extra gripping power and ground body to provide improved runout.



XTRA BITE (-X)
Very aggressive grip, ground body and sides for improved runout.



GROUP	Chuck Size	Critical Dimensions				Tap Hole	Width Inch C	OAL Inch B	Height Inch A	No. of Holes	No. of Steps	Top Step Ht S1	Mid Step Ht S2	Bot Step Ht S3	Part Number	Price Per Set
		Groove Width G	Tongue Width F	Screw Size E	Hole Space D											
SI-07-1/2-17	12	0.750	0.994	1/2	1.750	5/16-18	1.750	4.875	2.469	2	2	0.650	0.650	1.169	SP-120HJ2-X	\$665.39
SI-07-5/8-17	12	0.750	0.994	5/8	1.750	5/16-18	1.750	4.875	2.469	2	2	0.650	0.650	1.169	SP-125HJ2-X	\$665.39
SI-10-3/4-25	15 & UP	1.000	1.488	3/4	2.500	3/8-16	2.500	5.500	3.469	2	2	0.950	0.950	1.569	SP-150HJ2-X	\$950.56

THE TOOLS YOU NEED AT COMPETITIVE PRICES!



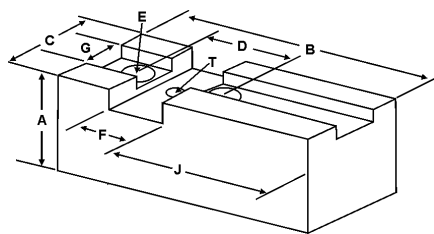
- Chuck Jaws
- Lathe & Collet Chucks
- Lathe Tooling
- Machine Vises
- Milling Toolholders
- ER, TG & DA Collets
- Carbide Inserts
- Drills, Taps & Reamers
- Threading & Grooving
- Indexable Cutting Tools
- Abrasives
- Cutting Fluids
- Measuring Tools
- MRO & Safety

Call Us Today For All Of Your Machine Tool Needs!

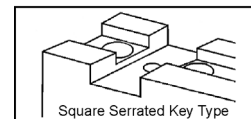
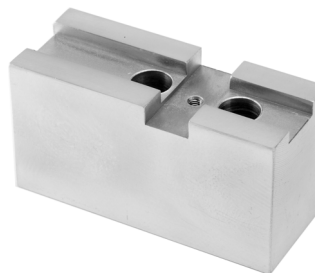
SOFT JAWS- Square Serrated Key Type

C

FOR USE ON: **Buck & Bison 6" Chucks, S.P., Pratt Burnerd & Other Chucks**



- Square Serrated Key Type
- Supplies maximum concentricity on finish turning operations
- Can be bored or turned to fit workpiece
- Steel jaws can be hardened
- Available flat ended or pointed for smaller diameter parts
- Special orders available
- Available in Aluminum & Steel
- Made in the USA



Group



QUANTITY DISCOUNTS!
Order **5 SETS OR MORE** of the same part number soft jaw and receive a **5% DISCOUNT!**

LATHE CHUCKS
LIVE CENTERS

WISE JAWS
WISE ACCESSORIES

STRAIGHT SHANK
COLLET HOLDERS

TAP HOLDERS
DRILL CHUCKS

CARBIDE INSERTS
THREADING/GROOVING

CUTTING TOOLS
MACHINERY

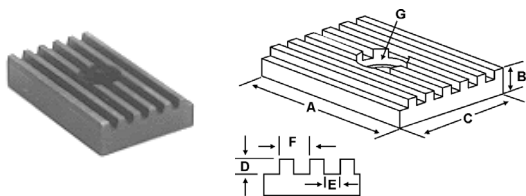
PRECISION TOOLS
DEBURRING

COOLANT/FLUIDS
TOOL STORAGE

Group No.	Chuck Size	Tap Hole T	Critical Dimensions				ALUMINUM				STEEL			
			Groove Width G	Key Width F	Screw Size E	Hole Space D	Hght Inch A	Key to Front J	Width Inch C	Length Inch B	FLAT END Part Number	Price Set Of 3	FLAT END Part Number	Price Set Of 3
SI-07-5/16-16	6	NONE	0.738	0.377	5/16	1.688	1.50	1.500	1.00	3.00	SP-6150AF	\$41.21	SP-6150F	\$42.82
							2.00	1.500	1.00	3.00	SP-6200AF	\$61.60	SP-6200F	\$68.92
							2.50	1.500	1.00	3.00	SP-6250AF	\$52.63	SP-6250F	\$54.29
							4.00	1.500	1.00	3.00	SP-6400AF	\$96.23	SP-6400F	\$108.51
SI-05-3/8-14	8	1/4-20	0.501	0.745	3/8	1.438	2.00	1.250	1.25	3.00	SP-8200AF	\$56.64	SP-8200F	\$63.16
							3.00	1.250	1.25	3.00	SP-8300AF	\$68.81	SP-8300F	\$76.57
SI-06-1/2-12	8	10-32	0.670	0.601	1/2	1.250	2.00	2.000	1.50	3.75	SP-8202AF	\$60.48	SP-8202F	\$67.19
							3.00	2.000	1.50	3.75	SP-8302AF	\$73.48	SP-8302F	\$82.83
SI-07-1/2-14	8	1/4-20	0.751	0.745	1/2	1.438	2.00	1.875	1.50	3.50	SP-8205AF	\$68.72	SP-8205F	\$76.57
							3.00	1.875	1.50	3.50	SP-8305AF	\$64.67	SP-8305F	\$72.93
							4.00	1.875	1.50	3.375	SP-8405AF*	\$101.85	SP-8405F*	\$114.84
SI-07-1/2-17	10 to 12	5/16-18	0.751	0.994	1/2	1.750	2.50	1.625	1.75	4.00	SP-10250AF	\$64.21	SP-10250F	\$70.81
							4.00	1.625	1.75	4.00	SP-10400AF	\$90.51	SP-10400F	\$99.52
							2.50	2.750	1.75	4.75	SP-12250AF	\$67.88	SP-12250F	\$74.68
SI-07-5/8-17	10 to 12	5/16-18	0.751	0.994	5/8	1.750	4.00	2.750	1.75	4.75	SP-12400AF	\$104.50	SP-12400F	\$114.84
							2.50	2.000	1.75	5.50	SP-12256AF	\$76.19	SP-12256F	\$83.76
							2.50	2.500	1.75	5.50	SP-12257AF	\$76.19	SP-12257F	\$83.76
SI-10-3/4-25	15 to 18	3/8-16	1.001	1.488	3/4	2.500	2.50	2.750	1.75	4.75	SP-12255AF	\$67.88	SP-12255F	\$74.68
							4.00	2.750	1.75	4.75	SP-12405AF	\$104.50	SP-12405F	\$114.84
							2.50	3.250	2.50	6.25	SP-15250AF	\$96.49	SP-15250F	\$105.26
							3.00	3.250	2.50	6.25	SP-15300AF	\$147.69	SP-15300F	\$166.50
SI-10-3/4-30	20-24	3/8-16	1.001	1.488	3/4	3.000	4.00	3.250	2.50	6.25	SP-15400AF	\$132.33	SP-15400F	\$173.00
							4.00	3.250	3.00	6.25	SP-15403AF*	\$179.56	SP-15403F	\$202.43
							2.50	3.250	3.00	6.25	SP-15253AF*	\$130.59	SP-15253F*	\$147.23
							2.50	3.250	2.50	6.25	SP-20250AF*	\$96.49	SP-20250F*	\$105.26
							4.50	3.250	2.50	6.25	SP-20400AF	\$132.94	SP-20400F	\$143.56

For "Pointed" Soft Jaws, please substitute "P" for "F" in the part number. Example: SP-8200AF will be SP-8200AP. Pointed Jaws: Up to 10" add \$4.00, 12" & over add \$7.00.
Soft Jaw Material: ALUMINUM-6061-T6 Bar Stock, STEEL-1018, "B" JAWS-7075-T6 Aircraft Aluminum
For complete list of applicable chucks, see pages 542-554. * denotes non-stock item. Please allow 1 week manufacturing time.

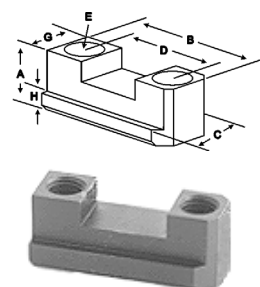
MASTER KEYS



Chuck Size	Critical Dimensions					Width Inch C	Hght Inch B	Length Inch A	Master Key Part Number	Price Each
	Screw Size G	Pitch F	Slot E	Depth D	Width Inch C					
8	1/4	0.200	0.098	0.101	0.744	0.375	1.313	SP-80SQK	\$29.48	
10 - 12	5/16	0.250	0.124	0.130	.993	0.500	1.688	SP-120SQK	\$28.48	
15 - 18	3/8	0.250	0.124	0.130	1.487	0.500	2.000	SP-150SQK	\$36.84	
15 - 18	3/8	0.250	0.124	0.130	1.487	0.500	2.250	SP-180SQK	\$32.75	
20 - 24	3/8	0.250	0.124	0.130	1.487	0.500	2.500	SP-210SQK	\$40.93	



JAW NUTS



Chuck Size	Critical Dimensions						2 Screws Included With Each Jaw Nut					
	Heel Height H	Groove Width G	Screw Size E	Hole Space D	Hght Inch A	Width Inch C	Length Inch B	Jaw Nut Part Number	Price Each	Screw Part Number	Price Each	
8	0.375	0.498	3/8-16	1.438	0.995	0.875	2.125	SP-80JN	\$58.45	S3/816100	\$2.25	
8	0.375	0.748	1/2-13	1.438	0.995	0.993	2.125	SP-85JN	\$58.45	S1/213150	\$2.25	
10 - 12	0.375	0.748	1/2-13	1.750	1.000	1.000	2.438	SP-100JN	\$55.04	S1/213150	\$2.25	
10 - 12	0.375	0.748	5/8-11	1.750	1.000	1.000	2.500	SP-125JN	\$55.04	S5/811150	\$3.25	
15 - 18	0.438	1.000	3/4-10	2.500	1.250	1.250	3.750	SP-155JN	\$60.20	S3/410175	\$4.25	
20 - 24	0.438	1.000	3/4-10	3.000	1.250	1.250	4.500	SP-215JN	\$63.62	S3/410175	\$4.25	

Call Us Or Visit Our Website For Our Complete Selection!