

HORIZONTAL / VERTICAL LOW PROFILE ROTARY TABLES

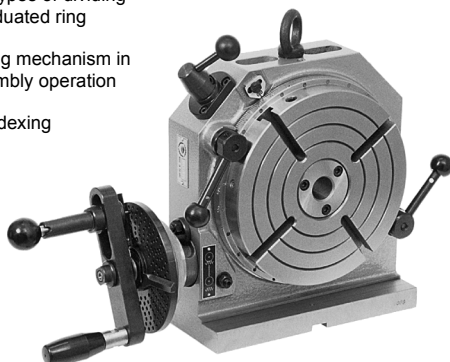
- Tables can be used horizontally and vertically
- Rigid, low profile, compact design provides for three types of dividing
 - **Angular Indexing** can be performed through the graduated ring from 0° to 360° in increments of 1°
 - **Rapid Indexing** is done by means of a special dividing mechanism in divisions 2, 3, 4, 6, 8, 12, and 24 without any disassembly operation
 - **Indexing** with the set of special dividing plates
- Disengageable worm gear permits direct and rapid indexing
- Semi-Steel table body

Accuracy:

- Squareness of clamping surface to base: .0008" max
- Parallelism of clamping surface to base: .0008" max
- Flatness of clamping surface: .0008" max
- True running of MT center hole: .0004" max
- Indexing accuracy: 1

Standard Accessories:

- 2 Mounting bolts with nuts
- Crank wheel
- 3 Dividing plates with one handle



SHIPS BY TRUCK

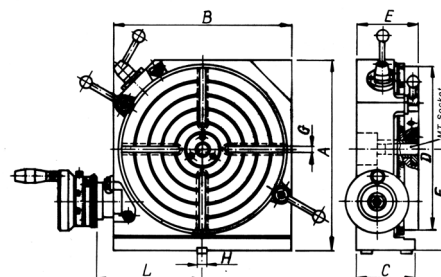


Table Size	A	B	C	D	H	F	G	E	L	Worm Ratio	Thru Holes	Center Hole	Wt lbs	With Dividing Plates	
														Part Number	Price
6-1/4"	8.9	7.9	3.54	6.3	.551	4.92	.394	3.78	5.00	1:60	.827	MT3	44	BI-7621-006	\$3,470.40
8"	10.6	9.5	3.74	7.87	.551	5.91	.394	3.86	5.79	1:60	1.378	MT3	55	BI-7621-008	\$3,771.00
10"	12.5	11.2	4.53	9.84	.709	6.89	.472	4.52	6.89	1:90	1.378	MT3	121	BI-7621-010	\$4,563.00
12"	14.7	13.7	4.53	12.6	.709	7.87	.472	4.72	8.15	1:90	1.417	MT3	176	BI-7621-012	\$5,112.00
16"	18.3	16.9	4.92	15.7	.709	9.84	5.31	5.31	9.76	1:90	1.969	MT4	269	BI-7621-016	\$7,137.00
20"	22.9	21.1	6.69	19.7	.709	12.4	6.3	6.89	12.2	0.125	2.559	MT5	573	BI-7621-020	\$10,467.00

TILTING ROTARY TABLES

Extremely accurate and solidly built for milling, boring and other machining operations. Precision 10 second vernier reading and inclinable reading in minutes provide the needed accuracy for most inspection applications. Completely sealed gears and heavy duty construction assure trouble-free usage. 90:1 gear ratio on both models.

- Table tilting range: 90°
- Extra deep coolant channel
- Dual positive actions locks
- Satin chrome dials
- Gear ratio 90:1
- Low profile
- 10 second vernier reading
- Gear drive immersed in oil
- Accuracy: 45 seconds

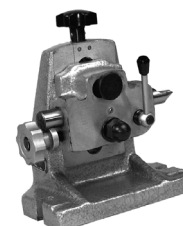
SHIPS BY TRUCK



Accuracy	
Clamping Surface Flatness (Concave)	0.0006"
Cylindrical Center Bore Concentricity	0.0008"
Taper Center Bore Concentricity	0.0008"
Surface To Base Parallelism	0.0008"
Surface To Angle Face Squareness	0.0004"
Surface To Center Slot Squareness	0.0008"



phase II



Optional Accessories

Description
Adjustable Tailstock for 10" Table PH2-240-001 \$137.00 each
Adjustable Tailstock for 12" Table PH2-240-002 \$168.00 each
Dividing Plates for 10" & 12" Tables PH2-241-101 \$100.00 each

Model	Table Dia	Height	Center Height	Base Dim.	T-slot Width	Locating Key	Center Hole	Center Hole	Weight	Part Number	Price
10"	9.81"	8.07"	5.51"	10.24 x 12.2"	0.47"	0.55"	1.20"	MT3	172 lbs	PH2-222-410	\$1,328.00
12"	12.6"	10.04"	6.89"	13.07 x 14.96"	0.55"	0.71"	1.60"	MT4	293 lbs	PH2-222-412	\$1,675.00

HORIZONTAL/VERTICAL ROTARY TABLE



- 10 second vernier reading
- Gear ratio 90:1
- One rotation of handle equals 4" on collar
- Ships via truck

ISO
INTERNATIONAL SELECT QUALITY

SHIPS BY TRUCK



Table Size	Height Horiz.	Height Vert.	Center Height	No. of T-Slots	T-Slot Size	Center Hole	Wt lbs	Part Number	Price
6"	3.1	7.8	3.9	3	.43	MT2	28	A-3900-2316	\$375.00
8"	4.1	10.4	5.3	3	.55	MT3	60	A-3900-2328	\$550.00
10"	4.5	12.8	6.5	6	.55	MT3	83	A-3900-2330	\$680.00
12"	5.3	15.3	7.7	6	.63	MT4	134	A-3900-2332	\$895.00

Call Us Or Visit Our Website For Our Complete Selection!

LATHE CHUCKS
LIVE CENTERS

WISE JAWS
WISE ACCESSORIES

STRAIGHT SHANK
COLLET HOLDERS

TAP HOLDERS
DRILL CHUCKS

CARBIDE INSERTS
THREADING/GROOVING

CUTTING TOOLS
MACHINERY

PRECISION TOOLS
DEBURRING

COOLANT/FLUIDS
TOOL STORAGE

INDEXERS/TAILSTOCKS

HORIZONTAL/VERTICAL SUPER SPACERS

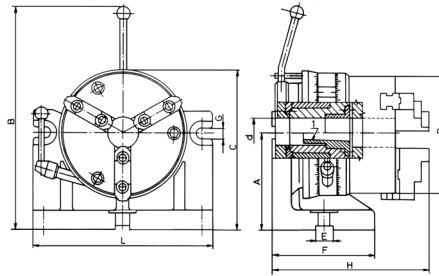
- New improved horizontal and vertical super spacers have quick and easy to change dividing plates
- Designed for milling, drilling, jig boring, and related machining operations
- Fixtures are also used to index parts being inspected
- Significantly increases productivity by reducing the time required to position the workpiece on the machine

- Standard Accessories:**
- 2 Mounting bolts with T-nuts
 - 2 Hex keys
 - 1 Chuck wrench
 - 2 Eye bolts
 - 2 Locating keys

Accuracy:

Maximum total spacing error: 2'
 Squareness of chuck to base: .0008" max
 Parallelism over face: .0008" max
 Chuck concentricity (universal): .0015" T.I.R.max
 Chuck concentricity (SET-TRU): .0015" T.I.R.max
 Center hole concentricity: .0008" T.I.R.max
 Mounting flange concentricity: .0008" T.I.R.max

SHIPS BY TRUCK

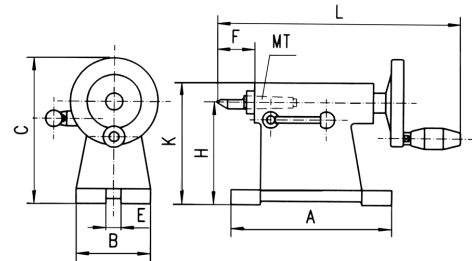


Chuck Dia	A	B	C	D	Thru Hole D	E	F	G	H	L	Wt lbs	With Chuck		Without Chuck	
												Part Number	Price	Part Number	Price
6-1/4"	4.92	11.85	8.27	6.30	1.653	.71	5.51	0.55	8.66	9.65	72	BI-7609-006	\$2,798.10	BI-7609-016	\$1,936.80
8"	6.30	15.04	10.43	7.87	2.165	.71	6.30	0.71	9.72	11.81	127	BI-7609-008	\$3,297.60	BI-7609-018	\$2,183.40
12-1/2"	9.84	21.85	16.24	12.40	4.055	0.71	7.87	0.71	12.24	15.75	317	BI-7609-012	\$7,236.00	BI-7609-022	\$5,337.00

TAILSTOCKS

For Horizontal/Vertical Super Spacers

- Rigid and precision design
- Tailstocks are provided with Precision dead center with .0002" T.I.R. 2 Locating keys
- 2 Mounting bolts with T-nuts



Size of Super Spacer	H +.002"	K	B	A	F		Key Size E	MT No.	Wt lbs	Tailstock		Dead Center	
					Min	Max				Part Number	Price	Part Number	Price
5"	3.937	5.51	3.15	7.68	1.30	2.48	0.55	2	14	BI-7610-104	\$651.60	BI-7540-002	\$18.90
6-1/4"	4.921	7.01	3.54	7.68	1.54	2.72	0.55	2	16	BI-7610-106	\$695.70	BI-7540-002	\$18.90
8"	6.299	8.39	4.53	9.84	1.89	3.35	0.71	3	28	BI-7610-108	\$818.10	BI-7540-003	\$25.20
12-1/2"	9.843	11.93	5.91	11.02	2.34	3.92	0.71	4	51	BI-7610-112	\$1,261.80	BI-7540-004	\$37.80

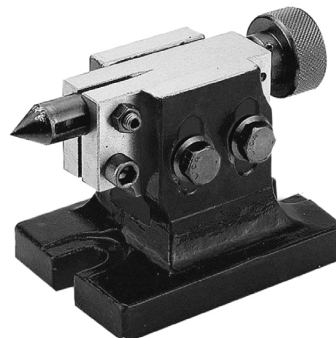
RAPID INDEXER



TAIL STOCK



- Ideal for holding round, irregular or square parts for milling and drilling operations
- 5" self-centering 3 jaw chuck
- Internal or external clamping
- Can be mounted either horizontally or vertically
- Table scale 1° for angular indexing
- Graduated 360° with 24 rapid notches at 15° each
- Locking handle



- Provides precision positioning on round workpieces
- For indexing, slotting and facing operations
- Available for 4" to 16" table sizes



Chuck Size	Table Bore	Clamping Range	Base W x L	Height-Table To Jaws	Part Number	Price Each
5"	1.181"	0.118 - 4"	6.340"	5.590"	PALM-34125	\$577.15

Fits Dia Table Size	Part Number	Price Each
4" & 6"	PALM-34214	\$220.19
8"	PALM-34216	\$281.30
10" & 12"	PALM-34218	\$286.15
16"	PALM-34220	\$311.37

Call Us Today For All Of Your Machine Tool Needs!

ROTARY INDEXING TABLES



PALMGREN
a CH Hanson brand

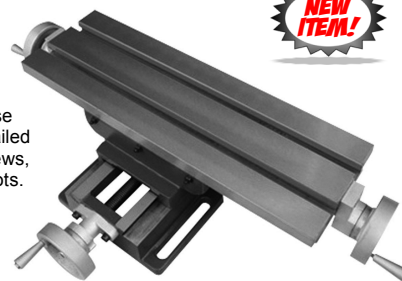
These tables can be used in either the horizontal and vertical position. The table top and the vertical and horizontal bases are ground for overall squareness. A key-way and bolt lugs are provided on both mounting surfaces. Smooth worm gear drive provides positive rotary feed. The dial collar on the index shaft of #34105 is graduated in 1 minute readings and #32806 is graduated in 3 minute increments on a vernier dial.

Table Rotates 360°

Table Dia	Height at 0°	Base	Gear Ratio	Wgt.	Part Number	Price
8"	3-7/8"	12" x 9-1/2"	40:1	44 lbs	PALM-32806	\$814.80
10"	3-7/8"	12" x 9-1/2"	40:1	52 lbs	PALM-34105	\$878.82

COMPOUND MILLING TABLE

ISO
INTERNATIONAL SELECT QUALITY



- Solid cast iron construction
- Features 12" of longitudinal travel and 7-1/2" of transverse travel, adjustable gibs, dovetailed ways, dependable Acme screws, vernier scales and 9/16" T-slots.
- Table height is 5-1/4".
- Footprint is 8 X 10-1/2".
- Mounting slots are 1/2" and 2-1/4" on center
- Weight: 62 lbs.

Table Size	Table Height	T-Slot	X-Travel	Y-Travel	Part Number	Price
18-1/2" x 6"	5-1/4"	9/16"	270mm	120mm	A-3900-2728	\$335.00

MILLING TABLE

PALMGREN
a CH Hanson brand



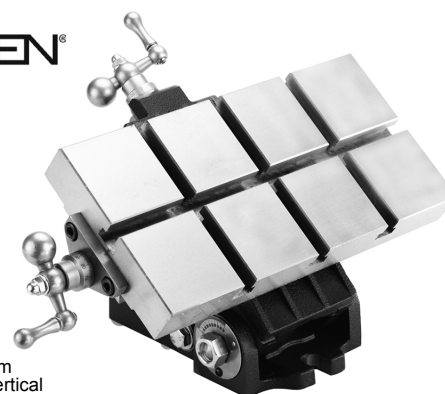
- Dovetailed slides have adjustable steel gibs to compensate for wear
- Hand wheel at each end of the table-top allows positioning from either side
- Dials are graduated in 0.001" inc.
- 2 longitudinal 14mm t-slots
- U-clamp set for clamping workpieces and vises to the table top
- Weight: 69 lbs.



Table Size	Height	Base Size	Table Travel	Part Number	Price
18-5/8" x 6"	5-3/16"	12" x 7-1/8"	12" x 8"	PALM-49181	\$377.33

CROSS SLIDE ANGLE TABLE

PALMGREN
a CH Hanson brand

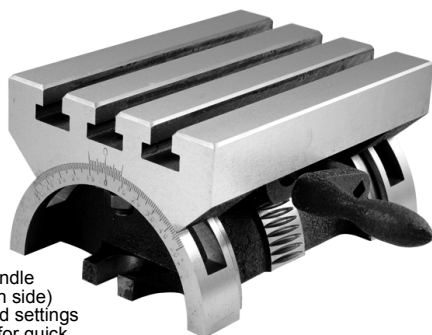


- Angular inclination from 0° horizontal to 90° vertical
- Angular position indicated in 1° inc.
- Dual axis movement in the "X" (left or right) and "Y" (front to back) direction
- Weight: 48 lbs.

Table Size	Height	Base Size	Table Travel	Part Number	Price
12" x 6"	4-5/8"	9" x 5"	8" x 4"	PALM-37124	\$935.08

HEAVY DUTY TILTING TABLES

ISO
INTERNATIONAL SELECT QUALITY

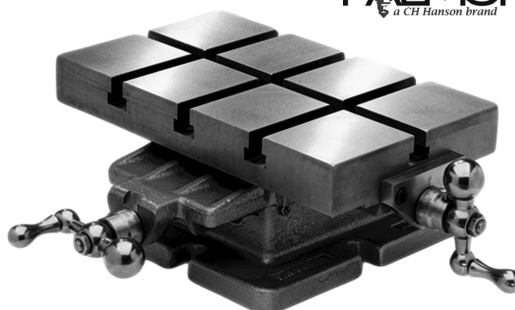


- Supplied with crank handle
- Range: 0-90° (45° each side)
- Has 2 screws for locked settings
- Graduated in degrees for quick setting purposes
- Heavy duty casting and precision ground with three T-slots
- Set at any angle with indexer

Table Size	Height	T-Slot	Weight lbs.	Part Number	Price Each
5" x 7"	3-3/4"	1/2"	21	A-3501-0001	\$160.00
7" x 10"	5"	1/2"	50	A-3501-0002	\$305.00
10" x 15"	6-1/2"	1/2"	130	A-3501-0003	\$625.00

CROSS SLIDE TABLES

PALMGREN
a CH Hanson brand



All Cross Slide Tables have precision-ground tops to 0.001" total indicator reading. Dials are graduated in 0.001" increments and have thumb-screws for easy "0" setting. Counter-balanced solid steel ball crank handles enable smooth movement. To eliminate interference with the machine table, handles do not extend below the base. These tables provide both X and Y axis movement, and have a single longitudinal T-slot with three transverse 3 / 8" T-slots.

Table Size	Height	Base Size	Table Travel	Wgt.	Part Number	Price
10" x 6"	4-3/8"	7-5/8" x 6-3/8"	6" x 4"	40 lbs	PALM-36103	\$623.71
12" x 6"	4-3/8"		8" x 4"	44 lbs	PALM-37123	\$750.78

Call Us Or Visit Our Website For Our Complete Selection!

LATHE CHUCKS
LIVE CENTERS

VICE JAWS
VICE ACCESSORIES

STRAIGHT SHANK
COLLET HOLDERS

TAP HOLDERS
DRILL CHUCKS

CARBIDE INSERTS
THREADING/GROOVING

CUTTING TOOLS
MACHINERY

PRECISION TOOLS
DEBURRING

COOLANT/FLUIDS
TOOL STORAGE