

ROUGHER/FINISHER ENDMILLS

3 FLUTE ROUGHING ENDMILLS 35° High Helix • Coarse Pitch

- 35° high helix for aluminum
- HSS Cobalt M42
- Uncoated
- Coarse pitch
- Square end with chamfer corner



Mill Dia	LOC	Shank	OAL	Part Number	Price Each
1/4	5/8	3/8	2-7/16	ME-ERP-1208	\$20.68
	1-1/8	3/8	2-15/16	ME-ERP-1208-L	\$22.42
5/16	3/4	3/8	2-1/2	ME-ERP-1210	\$21.76
3/8	1-1/2	3/8	3-1/4	ME-ERP-1212-L	\$25.81
7/16	1	3/8	2-11/16	ME-ERP-1214	\$27.44
1/2	1/2	1/2	2-9/16	ME-ERPS-1616-2	\$25.01
	1-5/8	1/2	3-5/8	ME-ERP-1616-M	\$30.03

Mill Dia	LOC	Shank	OAL	Part Number	Price Each
5/8	3/4	5/8	2-7/8	ME-ERPS-2020	\$27.84
	3/4	3/4	3	ME-ERPS-2424	\$38.27
3/4	3	3/4	5-1/4	ME-ERP-2424-L	\$52.68
	1-1/8	3/4	3-3/8	ME-ERPS-2432	\$53.29
1"	2	1	4-1/2	ME-ERP-3232	\$63.46
	3	1	5-1/2	ME-ERP-3232-M	\$66.66

MULTIPLE FLUTE ROUGHING ENDMILLS Coarse & Fine Pitch

- HSS Cobalt M42
- Uncoated
- Center cutting except where noted
- Square end with chamfer corner
- 4 flutes except 1" (5 flutes) and 1-1/4" (6 flutes)



Mill Dia	LOC	Shank	OAL	Pitch	Part Number	Price Each
1/4	5/8	3/8	2-7/16	Coarse	ME-CCRP-1208	\$21.97
	5/8	3/8	2-7/16	Fine	ME-CCFP-1208	\$21.97
	1-1/8	3/8	2-15/16	Coarse	ME-CCRP-1208-L	\$23.83
	1-1/8	3/8	2-15/16	Fine	ME-CCFP-1208-L	\$23.83
5/16	3/4	3/8	2-1/2	Coarse	ME-CCRP-1210	\$23.12
	3/4	3/8	2-1/2	Fine	ME-CCFP-1210	\$23.12
	1-3/8	3/8	3-1/8	Coarse	ME-CCRP-1210-L	\$28.53
	1-3/8	3/8	3-1/8	Fine	ME-CCFP-1210-L	\$28.53
3/8	3/8	3/8	2-1/8	Fine	ME-CCFPS-1212	\$26.18
	3/4	3/8	2-1/2	Coarse	ME-CCRP-1212	\$23.89
	3/4	3/8	2-1/2	Fine	ME-CCFP-1212	\$23.89
	1-1/2	3/8	3-1/4	Coarse	ME-CCRP-1212-L	\$27.44
7/16	1	3/8	2-11/16	Coarse	ME-CCRP-1214	\$27.44
	1	3/8	2-11/16	Fine	ME-CCFP-1214	\$27.44
1/2	1/2	1/2	2-1/2	Fine	ME-CCFPS-1616	\$26.99
	5/8	1/2	2-5/8	Coarse	ME-CCRP-1616-2	\$26.99
	5/8	1/2	2-5/8	Fine	ME-CCFP-1616-2	\$26.99
	1	1/2	3	Coarse	ME-CCRPS-1616	\$26.99

Mill Dia	LOC	Shank	OAL	Pitch	Part Number	Price Each
1/2	1-1/4	1/2	3-1/4	Fine	ME-CCFP-1616	\$28.92
	1-5/8	1/2	3-5/8	Coarse	ME-CCRP-1616-M	\$31.62
	1-5/8	1/2	3-5/8	Fine	ME-CCFP-1616-M	\$31.62
	2	1/2	4	Coarse	ME-CCRP-1616-L	\$40.29
	2	1/2	4	Fine	ME-CCFP-1616-L	\$40.29
9/16	1-3/8	1/2	3-3/8	Fine/ Non-CC	ME-CFP-1618	\$30.03
5/8	5/8	5/8	2-3/4	Fine	ME-CCFPS-2020	\$29.30
	1-5/8	5/8	3-3/4	Coarse	ME-CCRP-2020	\$35.80
	1-5/8	5/8	3-3/4	Fine	ME-CCFP-2020	\$35.80
	2-1/2	5/8	4-5/8	Coarse	ME-CCRP-2020-L	\$47.87
3/4	2-1/2	5/8	4-5/8	Fine	ME-CCFP-2020-L	\$47.87
	3/4	3/4	3	Fine	ME-CCFPS-2424	\$48.78
	1-5/8	3/4	3-7/8	Fine	ME-CCFP-2424	\$43.63
	2-1/4	3/4	4-5/8	Coarse	ME-CCRP-2424-M	\$47.22
3/4	2-1/4	3/4	4-5/8	Fine	ME-CCFP-2424-M	\$47.22
	3	3/4	5-1/4	Coarse	ME-CCRP-2424-L	\$55.45
	3	3/4	5-1/4	Fine	ME-CCFP-2424-L	\$55.45
1	2	1	4-1/2	Coarse	ME-CCRP-3232	\$62.32
1-1/4	2	1-1/4	4-1/2	Coarse	ME-CCRP-4040	\$81.47

4 FLUTE ROUGHING ENDMILLS Solid Carbide • Fine Pitch



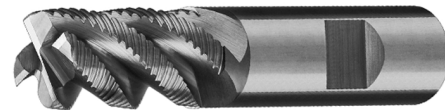
- Center cutting geometry
- For carbon, alloy and hard steel, stainless and nickel/inconel alloys
- Designed for increased chip removal rate
- Capable of slotting, profiling, and plunging operations
- Premium sub micrograin Carbide
- Form relieved
- Small corner radius for strength



Dia	Shank Dia	LOC	OAL	Uncoated		TiAlN Coated	
				Part Number	Price Each	Part Number	Price Each
1/4"	1/4"	3/4"	2-1/2"	BI-1160-40252	\$26.37	BI-1161-40252	\$31.38
5/16"	5/16"	11/32"	2-1/2"	BI-1160-40312	\$31.38	BI-1161-40312	\$37.66
3/8"	3/8"	7/8"	2-1/2"	BI-1160-40372	\$37.03	BI-1161-40382	\$43.94
7/16"	7/16"	1"	2-3/4"	BI-1160-40442	\$48.96	BI-1161-40442	\$59.01
1/2"	1/2"	1-1/4"	3"	BI-1160-40503	\$58.38	BI-1161-40503	\$66.54
9/16"	9/16"	1-1/4"	3-1/2"	BI-1160-40563	\$62.77	BI-1161-40563	\$77.83
5/8"	5/8"	1-1/4"	3-1/2"	BI-1160-40623	\$97.29	BI-1161-40623	\$109.85
3/4"	3/4"	1-1/2"	4"	BI-1160-40754	\$134.95	BI-1161-40754	\$153.78
1"	1"	1-1/2"	4"	BI-1160-41004	\$235.38	BI-1161-41004	\$257.35

4 FLUTE ROUGHING ENDMILLS Solid Carbide

- AlTiN Coated
- Ideal for alloy steels, stainless tool steels, nickel alloys and titanium
- 38° helix
- Designed to generate the maximum metal removal rates in most applications
- All tools 3/8" and over have Weldon flats



Dia.	Shank Dia.	OAL	Flute Length	Part Number	Price
1/4	1/4	2-1/2	3/4	MI-SHR2504X	\$40.55
5/16	5/16	2-1/2	13/16	MI-SHR3124X	\$46.70
3/8	3/8	2-1/2	7/8	MI-SHR3754X	\$57.30
1/2	1/2	3	1	MI-SHR5004X	\$82.45
5/8	5/8	3-1/2	1-1/4	MI-SHR6254X	\$144.10
3/4	3/4	4	1-1/4	MI-SHR7504X	\$199.65
1	1	4	1-1/4	MI-SHR0014X	\$272.10

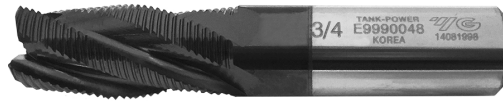
Call Us Today For All Of Your Machine Tool Needs!

ROUGHING ENDMILLS-FINE PITCH

C

MULTI FLUTE FINE PITCH ROUGHING END MILLS

Single End, Regular Length



Faster Feeds & Speeds Than HSS or Cobalt!

- Powdered HSS
- 30° helix
- For high production metal removal in a wide range of materials
- Single end, right hand cut
- Flat on shank
- Tank Power coating ideal for applications where cobalt wears rapidly, carbide chips or breaks, or when higher feed rates are desired

Dia	Shank	LOC	OAL	No. Flutes	Uncoated		Tank-Power Coated	
					Part Number	Price	Part Number	Price
1/4	3/8	5/8	2-7/16	3	YG-EME9990016	\$23.35	YG-EME9990016TF	\$28.62
1/4	3/8	1-1/8	2-15/16	3	YG-EME9990907	\$28.08	YG-EME9990907TF	\$34.38
5/16	3/8	3/4	2-1/2	3	YG-EME9990020	\$23.35	YG-EME9990020TF	\$28.62
3/8	3/8	3/4	2-1/2	4	YG-EME9990024	\$23.35	YG-EME9990024TF	\$28.62
7/16	3/8	1	2-11/16	4	YG-EME9990028	\$32.13	YG-EME9990028TF	\$41.14
1/2	1/2	1-1/4	3-1/4	4	YG-EME9990032	\$32.13	YG-EME9990032TF	\$41.14
1/2	1/2	1-5/8	3-5/8	4	YG-EME9990908	\$37.75	YG-EME9990908TF	\$45.05
9/16	1/2	1-3/8	3-3/8	4	YG-EME9990036	\$41.35	YG-EME9990036TF	\$49.35
5/8	5/8	1-5/8	3-3/4	4	YG-EME9990040	\$41.35	YG-EME9990040TF	\$49.35
3/4	3/4	1-5/8	3-7/8	4	YG-EME9990048	\$51.42	YG-EME9990048TF	\$60.28
3/4	5/8	1-5/8	3-7/8	4	YG-EME9990948	\$51.42	YG-EME9990948TF	\$60.28
3/4	3/4	2-1/2	4-3/4	4	YG-EME9990909	\$62.32	YG-EME9990909TF	\$73.07
7/8	7/8	1-7/8	4-1/8	5	YG-EME9990056	\$67.42	YG-EME9990056TF	\$76.36
7/8	3/4	1-7/8	4-1/8	5	YG-EME9990901	\$67.42	YG-EME9990901TF	\$76.36
1	1	2	4-1/2	5	YG-EME9990064	\$75.82	YG-EME9990064TF	\$91.66
1	1	3	5-1/2	5	YG-EME9990905	\$83.46	YG-EME9990905TF	\$98.23
1-1/8	1	2	4-1/2	6	YG-EME9990108	\$100.06	YG-EME9990108TF	\$117.80
1-1/4	1-1/4	2	4-1/2	6	YG-EME9990116	\$114.67	YG-EME9990116TF	\$141.46
1-1/4	1-1/4	3	5-1/2	6	YG-EME9990906	\$127.76	YG-EME9990906TF	\$157.57

LATHE CHUCKS
LIVE CENTERS

VICE JAWS
VICE ACCESSORIES

STRAIGHT SHANK
COLLET HOLDERS

TAP HOLDERS
DRILL CHUCKS

MULTI FLUTE FINE PITCH ROUGHING END MILLS

Single End, Long Length



Faster Feeds & Speeds Than HSS or Cobalt!

- Powdered HSS
- 30° helix
- For high production metal removal in a wide range of materials
- Single end, right hand cut
- Flat on shank
- Tank Power coating ideal for applications where cobalt wears rapidly, carbide chips or breaks, or when higher feed rates are desired

Dia	Shank	LOC	OAL	No. Flutes	Uncoated		Tank-Power Coated	
					Part Number	Price	Part Number	Price
5/16	3/8	1-3/8	3-3/16	3	YG-EME9A86020	\$36.76	YG-EME9A86020TF	\$44.10
3/8	3/8	1-1/2	3-1/4	4	YG-EME9A86024	\$36.76	YG-EME9A86024TF	\$44.10
3/8	3/8	1-1/2	4	4	YG-EME9A86924	\$36.76	YG-EME9A86924TF	\$44.10
1/2	1/2	2	4	4	YG-EME9A86032	\$41.73	YG-EME9A86032TF	\$50.07
5/8	5/8	2-1/2	4-5/8	4	YG-EME9A86040	\$59.67	YG-EME9A86040TF	\$71.60
3/4	5/8	3	5-1/8	4	YG-EME9A86048	\$66.71	YG-EME9A86048TF	\$76.70
3/4	3/4	3	5-1/4	4	YG-EME9990902	\$66.71	YG-EME9990902TF	\$76.70
7/8	3/4	3-1/2	5-3/4	5	YG-EME9A86056	\$82.56	YG-EME9A86056TF	\$93.13
7/8	7/8	3-1/2	5-3/4	5	YG-EME9A86956	\$82.56	YG-EME9A86956TF	\$93.13
1	1	4	6-1/2	5	YG-EME9990903	\$86.07	YG-EME9990903TF	\$97.09
1-1/4	3/4	4	6-1/4	6	YG-EME9A86116	\$148.86	YG-EME9A86116TF	\$168.61
1-1/4	1-1/4	4	6-1/2	6	YG-EME9990904	\$148.86	YG-EME9990904TF	\$168.61

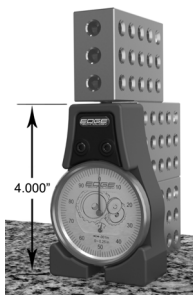
CARBIDE INSERTS
THREADING/GROOVING

CUTTING TOOLS
MACHINERY

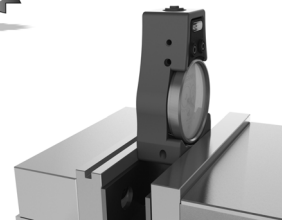
TOUCH OFF GAGE



Set tools accurately! Dramatically decrease set up time and eliminate tool path mismatch. Allows you to standardize the way tool offsets are measured in your shop, ensuring every job is setup the same way and runs without issue. Just lower the tool down onto the contact face until the indicator reads zero. At that point, you can be confident that the tool tip is exactly 4 inches from the surface the gage is sitting on.



- Accurately establishes tool length offsets for CNC milling machines
- The contact face is lightly spring loaded
- Contact face diameter is 0.250"
- Rectangular base and recessed indicator face allows fit between vise jaws on a pair of parallels
- Offset height 4.000 in (101.6mm)
- Large 2.2" easy to read indicator face
- Easy calibration check using 1-2-3 blocks
- Gage graduations 0.001"-repeatability 0.0002"
- Body and contact face are red anodized 6061-T6 aluminum
- Base: 2.4" wide x 1.3" depth x 4" height
- Padded case and manual included



TOUCH OFF GAGE
Part # EDGE-52000
\$99.99 ea

PRECISION TOOLS
DEBURRING

COOLANT/FLUIDS
TOOL STORAGE

Call Us Or Visit Our Website For Our Complete Selection!

ROUGHING ENDMILLS-COARSE PITCH

MULTI FLUTE COARSE PITCH ROUGHING END MILLS

Single End, Regular Length



- Powdered HSS
- 30° helix
- For high production metal removal in a wide range of materials
- Single end, right hand cut
- Flat on shank
- Tank Power coating ideal for applications where cobalt wears rapidly, carbide chips or breaks, or when higher feed rates are desired

**Faster Feeds & Speeds
Than HSS or Cobalt!**

Dia	Shank	LOC	OAL	No. Flutes	Uncoated		Tank-Power Coated	
					Part Number	Price	Part Number	Price
1/4	3/8	5/8	2-7/16	3	YG-EME9991016	\$19.67	YG-EME9991016TF	\$26.79
1/4	3/8	1-1/8	2-15/16	3	YG-EME9991902	\$23.59	YG-EME9991902TF	\$32.14
5/16	3/8	3/4	2-1/2	3	YG-EME9991020	\$19.67	YG-EME9991020TF	\$26.79
3/8	3/8	3/4	2-1/2	4	YG-EME9991024	\$20.05	YG-EME9991024TF	\$26.79
7/16	3/8	1	2-11/16	4	YG-EME9991028	\$27.94	YG-EME9991028TF	\$39.00
1/2	1/2	1-1/4	3-1/4	4	YG-EME9991032	\$27.94	YG-EME9991032TF	\$39.00
1/2	1/2	1-5/8	3-5/8	4	YG-EME9991903	\$32.34	YG-EME9991903TF	\$42.21
9/16	1/2	1-3/8	3-3/8	4	YG-EME9991036	\$35.46	YG-EME9991036TF	\$46.28
5/8	5/8	1-5/8	3-3/4	4	YG-EME9991040	\$35.46	YG-EME9991040TF	\$46.28
3/4	3/4	1-5/8	3-7/8	4	YG-EME9991048	\$44.10	YG-EME9991048TF	\$53.76
3/4	5/8	1-5/8	3-7/8	4	YG-EME9991948	\$44.10	YG-EME9991948TF	\$53.76
3/4	3/4	2-1/2	4-3/4	4	YG-EME9991904	\$53.38	YG-EME9991904TF	\$67.28
7/8	7/8	1-7/8	4-1/8	5	YG-EME9991056	\$56.71	YG-EME9991056TF	\$71.44
7/8	3/4	1-7/8	4-1/8	5	YG-EME9991901	\$56.71	YG-EME9991901TF	\$71.44
1	1	2	4-1/2	5	YG-EME9991064	\$63.81	YG-EME9991064TF	\$86.13
1	1	3	5-1/2	5	YG-EME9991905	\$76.93	YG-EME9991905TF	\$94.33
1-1/8	1	2	4-1/2	6	YG-EME9991108	\$82.36	YG-EME9991108TF	\$101.02
1-1/4	1-1/4	2	4-1/2	6	YG-EME9991116	\$106.51	YG-EME9991116TF	\$130.61
1-1/4	1-1/4	3	5-1/2	6	YG-EME9991906	\$118.68	YG-EME9991906TF	\$145.53

MULTI FLUTE COARSE PITCH ROUGHING END MILLS

Single End, Long Length



- Powdered HSS
- 30° helix
- For high production metal removal in a wide range of materials
- Single end, right hand cut
- Flat on shank
- Tank Power coating ideal for applications where cobalt wears rapidly, carbide chips or breaks, or when higher feed rates are desired

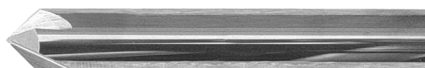
**Faster Feeds & Speeds
Than HSS or Cobalt!**

Dia	Shank	LOC	OAL	No. Flutes	Uncoated		Tank-Power Coated	
					Part Number	Price	Part Number	Price
5/16	3/8	1-3/8	3-3/16	3	YG-EME9A87020	\$30.70	YG-EME9A87020TF	\$36.84
3/8	3/8	1-1/2	3-1/4	4	YG-EME9A87024	\$31.29	YG-EME9A87024TF	\$36.84
3/8	3/8	1-1/2	4	4	YG-EME9A87924	\$30.70	YG-EME9A87924TF	\$36.84
1/2	1/2	2	4	4	YG-EME9A87032	\$34.86	YG-EME9A87032TF	\$43.59
5/8	5/8	2-1/2	4-5/8	4	YG-EME9A87040	\$49.88	YG-EME9A87040TF	\$59.86
3/4	5/8	3	5-1/8	4	YG-EME9A87048	\$55.75	YG-EME9A87048TF	\$69.66
3/4	3/4	3	5-1/4	4	YG-EME9A87948	\$55.75	YG-EME9A87948TF	\$69.66
7/8	3/4	3-1/2	5-3/4	5	YG-EME9A87056	\$69.01	YG-EME9A87056TF	\$81.22
7/8	7/8	3-1/2	5-3/4	5	YG-EME9A87956	\$69.01	YG-EME9A87956TF	\$81.22
1	1	4	6-1/2	5	YG-EME9A87064	\$81.76	YG-EME9A87064TF	\$92.25
1-1/4	3/4	4	6-1/4	6	YG-EME9A87116	\$145.18	YG-EME9A87116TF	\$163.77
1-1/4	1-1/4	4	6-1/2	6	YG-EME9A87917	\$145.18	YG-EME9A87917TF	\$163.77

CHAMFER MILLS

Carbide 4 Flute-Single End

INTERNAL TOOL



Included Angle	Shank Dia	OAL	Angle Length	Part Number	Price Each
120° 4 flute	3/16	2-1/2	0.050	IT-64-4800	\$25.16
	1/4	2-1/2	0.060	IT-64-4810	\$26.29
	5/16	2-1/2	0.090	IT-64-4820	\$30.43
	3/8	2-1/2	0.105	IT-64-4830	\$38.33
	1/2	3	0.140	IT-64-4840	\$56.30
90° 4 flute	3/16	2-1/2	0.090	IT-64-4850	\$25.16
	1/4	2-1/2	0.125	IT-64-4860	\$26.29
	5/16	2-1/2	0.156	IT-64-4870	\$30.43
	3/8	2-1/2	0.187	IT-64-4880	\$38.33
	1/2	3	0.250	IT-64-4890	\$56.30
60° 4 flute	3/16	2-1/2	0.160	IT-64-4900	\$25.16
	1/4	2-1/2	0.200	IT-64-4910	\$26.29
	5/16	2-1/2	0.270	IT-64-4920	\$30.43
	3/8	2-1/2	0.312	IT-64-4930	\$38.33
	1/2	3	0.420	IT-64-4940	\$56.30

Call Us Today For All Of Your Machine Tool Needs!

SOLID CARBIDE BURRS

With 1/4" Shanks

Standard Cut- For a general purpose cut when stock removal rates and finish requirements are average. Ideal for soft ferrous materials
Double Cut- For roughing or high stock removal. Ideal for extra tough materials needing a good finish.



Cylindrical Flat End

Tool Ref.	Dia	LOC	Standard Cut Part Number	Double Cut Part Number	Price Each
SA-11	1/8	1/2	MO-001005C	MO-002005C	\$8.33
SA-13	5/32	5/8	MO-001009	MO-002009C	\$8.33
SA-14	3/16	5/8	MO-001012C	MO-002012C	\$8.33
SA-1	1/4	5/8	MO-001017C	MO-002017C	\$7.81
SA-2	5/16	3/4	MO-001018	MO-002018	\$9.07
SA-3	3/8	3/4	MO-001019	MO-002019	\$9.10
SA-4	7/16	1	MO-001020	MO-002020	\$12.30
SA-5	1/2	1	MO-001021	MO-002021	\$13.85
SA-6	5/8	1	MO-001022	MO-002022	\$24.08
SA-16	3/4	3/4	MO-001024	MO-002024	\$35.15
SA-7	3/4	1	MO-001025	MO-002025	\$38.44
SA-9	1	1	MO-001026	MO-002026	\$54.79



Cylindrical Flat End- End Cut

Tool Ref.	Dia	LOC	Standard Cut Part Number	Double Cut Part Number	Price Each
SB-11	1/8	1/2	MO-001034C	MO-002034C	\$8.58
SB-14	3/16	5/8	MO-001041	MO-002041	\$8.58
SB-1	1/4	5/8	MO-001046C	MO-002046C	\$8.58
SB-2	5/16	3/4	MO-001047	MO-002047	\$9.59
SB-3	3/8	3/4	MO-001048	MO-002048	\$9.51
SB-4	7/16	1	MO-001049	MO-002049	\$13.46
SB-5	1/2	1	MO-001055	MO-002055	\$14.94
SB-6	5/8	1	MO-001050	MO-002050	\$26.07
SB-16	3/4	3/4	MO-001052	MO-002052	\$38.58
SB-7	3/4	1	MO-001053	MO-002053	\$40.89
SB-9	1	1	MO-001054	MO-002054	\$61.44



Cylindrical Radius End

Tool Ref.	Dia	LOC	Standard Cut Part Number	Double Cut Part Number	Price Each
SC-11	1/8	1/2	MO-001062C	MO-002062C	\$8.45
SC-13	5/32	5/8	MO-001065C	MO-002065C	\$8.45
SC-14	3/16	5/8	MO-001068C	MO-002068C	\$8.45
SC-1	1/4	5/8	MO-001071C	MO-002072C	\$6.88
SC-2	5/16	3/4	MO-001072	MO-002072	\$9.36
SC-3	3/8	3/4	MO-001073	MO-002073	\$10.12
SC-4	7/16	1	MO-001074	MO-002074	\$14.00
SC-5	1/2	1	MO-001075	MO-002075	\$15.17
SC-6	5/8	1	MO-001076	MO-002076	\$24.71
SC-7	3/4	1	MO-001077	MO-002077	\$40.62
SC-9	1	1	MO-001079	MO-002078	\$58.10



Spherical/Ball Shape

Tool Ref.	Dia	LOC	Standard Cut Part Number	Double Cut Part Number	Price Each
SD-11	1/8	3/32	MO-001083C	MO-002083C	\$8.21
SD-14	3/16	1/8	MO-001086C	MO-002086C	\$8.21
SD-1	1/4	7/32	MO-001089C	MO-002089C	\$7.81
SD-2	5/16	1/4	MO-001090	MO-002090	\$7.77
SD-3	3/8	5/16	MO-001091	MO-002091	\$8.37
SD-5	1/2	7/16	MO-001093	MO-002093	\$11.93
SD-6	5/8	9/16	MO-001094	MO-002094	\$18.27
SD-7	3/4	11/16	MO-001095	MO-002095	\$26.67
SD-9	1	15/16	MO-001096	MO-002096	\$45.79



Oval Shape

Tool Ref.	Dia	LOC	Standard Cut Part Number	Double Cut Part Number	Price Each
SE-11	3/16	5/16	MO-004127	MO-004128	\$9.33
SE-1	1/4	3/8	MO-001105C	MO-002105C	\$8.12
SE-3	3/8	5/8	MO-001106	MO-002106	\$9.76
SE-5	1/2	7/8	MO-001107	MO-002107	\$14.22
SE-6	5/8	1	MO-001108	MO-002108	\$24.79
SE-7	3/4	1	MO-001109	MO-002109	\$36.37



Tree Shape-Radius End

Tool Ref.	Dia	LOC	Standard Cut Part Number	Double Cut Part Number	Price Each
SF-11	1/8	1/2	MO-001112C	MO-002112C	\$8.58
SF-1	1/4	3/4	MO-001117C	MO-002117C	\$8.02
SF-3	3/8	3/4	MO-001118	MO-002118	\$10.11
SF-4	7/16	1	MO-001119	MO-002119	\$12.84
SF-5	1/2	1	MO-001121	MO-002121	\$13.36
SF-6	5/8	1	MO-001122	MO-002122	\$24.38
SF-7	3/4	1	MO-001123	MO-002123	\$35.66
SF-15	3/4	1-1/2	MO-001125	MO-002125	\$47.89



Tree Shape-Pointed End

Tool Ref.	Dia	LOC	Standard Cut Part Number	Double Cut Part Number	Price Each
SG-1	1/4	5/8	MO-001137C	MO-002137C	\$8.02
SG-2	5/16	3/4	MO-001138	MO-002138	\$8.74
SG-3	3/8	3/4	MO-001139	MO-002139	\$9.77
SG-5	1/2	1	MO-001141	MO-002141	\$13.38
SG-6	5/8	1	MO-001142	MO-002142	\$24.19
SG-7	3/4	1	MO-001143	MO-002143	\$34.39
SG-15	3/4	1-1/2	MO-001144	MO-002144	\$44.17



Flame

Tool Ref.	Dia	LOC	Standard Cut Part Number	Double Cut Part Number	Price Each
SH-1	1/4	5/8	MO-001157C	MO-002157C	\$8.62
SH-2	5/16	3/4	MO-001153	MO-002153	\$9.79
SH-5	1/2	1-1/4	MO-001154	MO-002154	\$17.51
SH-6	5/8	1-7/16	MO-001155	MO-002155	\$34.75
SH-7	3/4	1-5/8	MO-001156	MO-002156	\$45.10



60° Cone Shape

Tool Ref.	Dia	LOC	Standard Cut Part Number	Double Cut Part Number	Price Each
SJ-1	1/4	3/16	MO-001162	MO-002162	\$8.02
SJ-5	1/2	7/16	MO-001164	MO-002164	\$11.47
SJ-6	5/8	9/16	MO-001165	MO-002165	\$21.16
SJ-7	3/4	11/16	MO-001166	MO-002166	\$26.09
SJ-9	1	15/16	MO-001167	MO-002167	\$43.82



90° Cone Shape

Tool Ref.	Dia	LOC	Standard Cut Part Number	Double Cut Part Number	Price Each
SK-1	1/4	1/8	MO-001172	MO-002172C	\$8.02
SK-5	1/2	1/4	MO-001174	MO-002174	\$11.83
SK-6	5/8	5/16	MO-002175	MO-002175	\$20.39
SK-7	3/4	3/8	MO-002176	MO-002176	\$26.43
SK-9	1	1/2	MO-001177C	MO-002177	\$46.64



Conical Radius End

Tool Ref.	Dia	LOC	Standard Cut Part Number	Double Cut Part Number	Price Each
SL-1	1/4	5/8	MO-001184	MO-002184	\$8.29
SL-3	3/8	1-1/16	MO-001186	MO-002186	\$12.46
SL-4	1/2	1-1/8	MO-001187	MO-002187	\$15.13
SL-6	5/8	1-5/16	MO-001179	MO-002179	\$38.83
SL-7	3/4	1-1/2	MO-001189	MO-002189	\$50.66



Conical

Tool Ref.	Dia	LOC	Standard Cut Part Number	Price Each
SM-3	1/4	1	MO-002200	\$8.69
SM-4	3/8	1/2	MO-002201	\$11.75
SM-5	1/2	7/8	MO-002202	\$15.82
SM-6	5/8	1	MO-002203	\$23.10



Inverted Cone

Tool Ref.	Dia	LOC	Standard Cut Part Number	Price Each
SN-1	1/4	5/16	MO-002227	\$8.34
SN-2	3/8	3/8	MO-002231	\$10.38
SN-4	1/2	1/2	MO-002228	\$14.67
SN-6	5/8	3/4	MO-002229	\$23.79
SN-7	3/4	5/8	MO-002230	\$35.68



LATHE CHUCKS
 LIVE CENTERS
 VISE ACCESSORIES
 VISE JAWS
 STRAIGHT SHANK
 COLLET HOLDERS
 TAP HOLDERS
 DRILL CHUCKS
 CARBIDE INSERTS
 THREADING/GROOVING
 CUTTING TOOLS
 MACHINERY
 PRECISION TOOLS
 DEBURRING
 COOLANT/FLUIDS
 TOOL STORAGE

Call Us Or Visit Our Website For Our Complete Selection!