

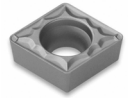
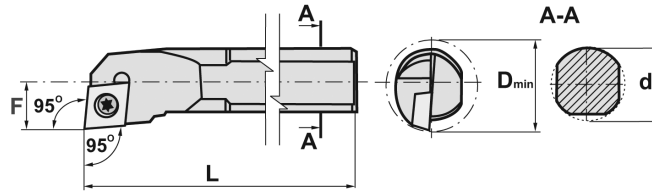
SCLCR BORING BARS USING CCMT/CCGT INSERTS

SCLCR/L BORING BARS

Steel



- Industry standard SCLCR type
- Uses CCMT or CCGT type inserts
- Available in solid steel or coolant thru
- Shanks have locating flats for easy set up
- Please see following page for inserts



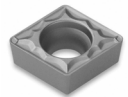
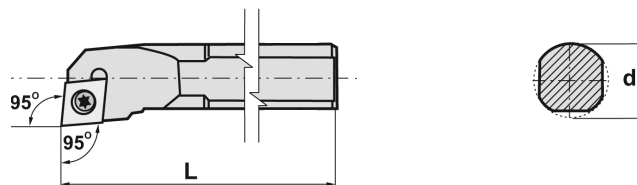
Using CCMT/CCGT Inserts

Insert Series	Industry Reference	Shank Dia d	Min Bore D	F Dim	OAL L	Right Hand Part Number	Left Hand Part Number	Price Each
SOLID								
CC_T - 21.5_	05-SCLCR/L-2	0.313	0.354	0.177	4.00	B-SCLCR2-S05H-S	B-SCLCL2-S05H-S	\$41.80
	06-SCLCR/L-2	0.375	0.406	0.203	5.00	B-SCLCR2-S06K-S	B-SCLCL2-S06K-S	\$46.55
	08-SCLCR/L-2	0.500	0.562	0.281	6.00	B-SCLCR2-S08M-S	B-SCLCL2-S08M-S	\$51.73
	10-SCLCR/L-2	0.625	0.812	0.406	7.00	B-SCLCR2-S10Q-S	B-SCLCL2-S10Q-S	\$63.95
CC_T - 32.5_	08-SCLCR/L-3	0.500	0.688	0.344	6.00	B-SCLCR3-S08M-S	B-SCLCL3-S08M-S	\$51.73
	10-SCLCR/L-3	0.625	0.812	0.406	7.00	B-SCLCR3-S10Q-S	B-SCLCL3-S10Q-S	\$63.95
	12-SCLCR/L-3	0.750	1.000	0.500	7.00	B-SCLCR3-S12Q-S	B-SCLCL3-S12Q-S	\$73.36
	16-SCLCR/L-3	1.000	1.250	0.625	8.00	B-SCLCR3-S16R-S	B-SCLCL3-S16R-S	\$101.57
COOLANT-THRU								
CC_T - 21.5_	A04-SCLCR/L-2	0.250	0.330	0.177	4.00	B-SCLCR2-A04H-S	B-SCLCL2-A04H-S	\$57.00
	A05-SCLCR/L-2	0.313	0.354	0.177	4.00	B-SCLCR2-A05K-S	B-SCLCL2-A05K-S	\$57.00
	A06-SCLCR/L-2	0.375	0.406	0.203	5.00	B-SCLCR2-A06K-S	B-SCLCL2-A06K-S	\$61.75
	A08-SCLCR/L-2	0.500	0.562	0.281	6.00	B-SCLCR2-A08M-S	B-SCLCL2-A08M-S	\$67.45
	A08-SCLCR/L-2	0.625	0.812	0.406	7.00	B-SCLCR2-A10Q-S	B-SCLCL2-A10Q-S	\$74.55
CC_T - 32.5_	A08-SCLCR/L-3	0.500	0.688	0.344	6.00	B-SCLCR3-A08M-S	B-SCLCL3-A08M-S	\$67.45
	A10-SCLCR/L-3	0.625	0.812	0.406	7.00	B-SCLCR3-A10Q-S	B-SCLCL3-A10Q-S	\$77.28
	A12-SCLCR/L-3	0.750	1.000	0.500	7.00	B-SCLCR3-A12Q-S	B-SCLCL3-A12Q-S	\$84.21
	A16-SCLCR/L-3	1.000	1.250	0.625	8.00	B-SCLCR3-A16R-S	B-SCLCL3-A16R-S	\$128.25

SCLCR BORING BARS

Heavy Metal & Carbide

- Industry standard SCLCR type
- Uses CCMT or CCGT type inserts
- Shanks have locating flats
- Made in the USA



Using CCMT/CCGT Inserts

Insert	Industry Reference	Shank	Heavy Metal-6xD				Carbide Shank-8xD				Screw \$1.00	Wrench
			Min Bore	L	Part Number	Price	Min Bore	L	Part Number	Price		
CC_21.5_	_05-SCLCR-2	0.312	0.362	4.0	BBS-3000R	\$133.00	0.438	6.0	BBS-5000R	\$162.00	SC-76	TX-207 \$6.50
	_06-SCLCR-2	0.375	0.425	4.0	BBS-3010R	\$146.00	0.500	6.0	BBS-5010R	\$166.00		
	_08-SCLCR-2	0.500	0.550	6.0	BBS-3020R	\$259.00	0.630	8.0	BBS-5020R	\$220.00		
	_10-SCLCR-2	0.625	0.675	6.0	BBS-3040R	\$326.00	0.810	8.0	BBS-5040R	\$333.00		
CC_32.5_	_08-SCLCR-3	0.500	-	-	-	-	0.630	8.0	BBS-5030R	\$220.00	SC-77	TX-215 \$8.00
	_10-SCLCR-3	0.625	0.675	6.0	BBS-3050R	\$326.00	0.810	8.0	BBS-5050R	\$333.00		
	_12-SCLCR-3	0.750	0.800	8.0	BBS-3060R	\$573.00	1.000	10.0	BBS-5060R	\$507.00		
	_16-SCLCR-3	1.000	1.050	8.0	BBS-3070R	\$777.00	1.280	12.0	BBS-5070R	\$730.00		

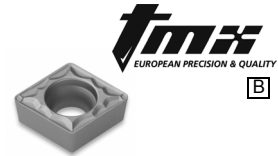
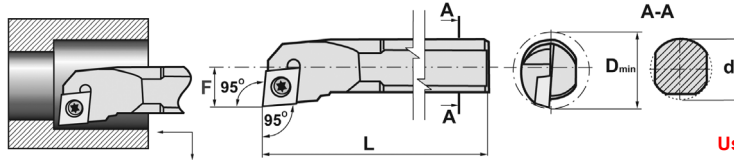
Call Us Today For All Of Your Machine Tool Needs!

SCLCR/L BORING BARS & CCMT/CCGT INSERTS

SCLCR/L BORING BARS

Steel

- Industry standard SCLCR/L type
- Steel shank
- Uses CCMT or CCGT inserts
- Shanks have locating flats
- 3° side & end cutting edge angle



Using CCMT/CCGT Inserts

Uses Insert	Style	Shank Size d	Min Bore D	OAL L	F	Right Hand Part Number	Left Hand Part Number	Price Each	SPARE PARTS	
									Screw Part Number	Hex/Torx Key Part Number
CC_T-21.5_	SI-SCLCR/L4-2	.312	.354	4	.1875	BI-6870-042R	BI-6870-042L	\$48.64	BI-6998-2506 \$0.72	BI-6998-007 \$4.99
	SI-SCLCR/L6-2	.375	.468	6	.250	BI-6870-062R	BI-6870-062L	\$48.64		
	SI-SCLCR/L8-2	.500	.560	7	.290	BI-6870-082R	BI-6870-082L	\$48.64		
	SI-SCLCR/L10-2	.625	.810	8	.405	BI-6870-085R	BI-6870-085L	\$64.95		
CC_T-32.5_	SI-SCLCR/L8-3	.500	.625	7	.312	BI-6870-093R	BI-6870-093L	\$48.96	BI-6998-4008T \$0.72	BI-6998-015 \$4.99
	SI-SCLCR/L10-3	.625	.812	8	.406	BI-6870-103R	BI-6870-103L	\$57.08		
	SI-SCLCR/L12-3	.750	1	10	.500	BI-6870-123R	BI-6870-123L	\$61.37		
	SI-SCLCR/L16-3	1	1.120	12	.6094	BI-6870-163R	BI-6870-163L	\$78.02		

CCMT INSERTS

80° Diamond, 7° Relief Angle



Buy In Box Quantities & Save!



ANSI	ISO	IC (Inch)	T (Inch)	R (Inch)	Cutting Conditions	Operation/ Application	Chip Breaker	Grade	Part Number	Price 1-9 Pcs	Box Price
For STEELS											
CCMT21.50	CCMT060202	1/4	3/32	0.004 1/256	Cont	Finish To Medium Boring	PS	GT9530	TO-6998297	\$7.74	\$5.68
					Cont & Int Turning	Finish To Medium Boring	PS	T9125	TO-6864994	\$9.09	\$6.67
CCMT21.51	CCMT060204	1/4	3/32	0.016 1/64	Cont	Finish To Medium Boring	PS	NS9530	TO-6997711	\$7.20	\$5.28
					Cont	Finish To Medium Boring	PS	GT9530	TO-6998298	\$7.74	\$5.68
					Cont & Int Turning	Finish To Medium Boring	PS	T9125	TO-6865010	\$9.09	\$6.67
CCMT21.52	CCMT060208	1/4	3/32	0.031 1/32	Cont	Finish To Medium Boring	PS	NS9530	TO-6998433	\$7.20	\$5.28
					Cont & Int Turning	Finish To Medium Boring	PS	T9125	TO-6864937	\$9.09	\$6.67
CCMT32.50	CCMT09T302	3/8	5/32	0.004 1/256	Cont	Finish To Medium Boring	PS	GT9530	TO-6998300	\$9.63	\$7.06
					Cont & Int Turning	Finish To Medium Boring	PS	T9125	TO-6865282	\$10.89	\$7.99
CCMT32.51	CCMT09T304	3/8	5/32	0.016 1/64	Cont	Finish To Medium Boring	PS	NS9530	TO-6997713	\$8.28	\$6.07
					Cont & Int Turning	Finish To Medium Boring	PS	T9125	TO-6865204	\$10.89	\$7.99
CCMT32.52	CCMT09T308	3/8	5/32	0.031 1/32	Cont	Finish To Medium Boring	PS	GT9530	TO-6998302	\$9.63	\$7.06
					Cont & Int Turning	Finish To Medium Boring	PS	T9125	TO-6865415	\$10.89	\$7.99

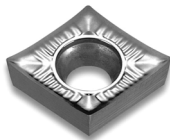
For STAINLESS STEEL

CCMT21.50.5	CCMT060202	1/4	3/32	0.004	Cont	Finish To Medium	PS	GT9530	TO-6998297	\$7.74	\$5.68
CCMT21.51	CCMT060204	1/4	3/32	0.0156 1/64	Cont	Finish To Medium	PS	NS9530	TO-6997711	\$7.20	\$5.28
					Cont - Gen. Purp.	Finish	PF	T6120	TO-6712226	\$8.73	\$6.40
					Cont - Gen. Purp.	Medium To Rough	PM	T6120	TO-6994859	\$9.09	\$6.67
CCMT21.52	CCMT060208	1/4	3/32	0.0312 1/32	Cont	Finish To Medium	PS	GT9530	TO-6998299	\$7.74	\$5.68
					Cont - Gen. Purp.	Medium To Rough	PM	T6120	TO-6994860	\$9.09	\$6.67
					Rough & Hvy Boring	Medium To Rough	PM	T6130	TO-6994900	\$9.09	\$6.67
CCMT32.50.5	CCMT09T302	3/8	5/32	0.004 1/256	Cont	Finish To Medium	PS	GT9530	TO-6998300	\$9.63	\$7.06
					Rough & Hvy Boring	Finish To Medium	PS	T6130	TO-6994700	\$10.89	\$7.99
CCMT32.51	CCMT09T304	3/8	5/32	0.0156 1/64	Cont	Finish To Medium	PS	NS9530	TO-6997713	\$8.28	\$6.07
					Cont - Gen. Purp.	Finish	PF	T6120	TO-6712228	\$10.89	\$7.99
					Rough & Hvy Boring	Medium To Rough	PM	T6130	TO-6994901	\$10.89	\$7.99
CCMT32.52	CCMT09T308	3/8	5/32	0.0312 1/32	Cont	Finish To Medium	PS	GT9530	TO-6998302	\$9.63	\$7.06
					Cont - Gen. Purp.	Medium To Rough	PM	T6120	TO-6994862	\$10.89	\$7.99
					Rough & Hvy Boring	Medium To Rough	PM	T6130	TO-6994901	\$10.89	\$7.99

CCGT INSERTS

For Machining Aluminum

- Grade H01-Uncoated grade for aluminum
- Sharp positive HA chipbreaker is ideal for aluminum
- For continuous non ferrous turning



IC	Thickness	Radius	Grade	Description	Part Number	Price Each
1/4	3/32	0.008 1/64	H01	CCGT 21.50.5 AK H01	KOY-1024	\$7.87
			H01	CCGT 21.51 AK H01	KOY-1026	\$7.87
3/8	5/32	0.008 1/64	H01	CCGT 32.50.5 AK H01	KOY-1028	\$9.22
			H01	CCGT 32.51 AK H01	KOY-1030	\$9.22
			H01	CCGT 32.52 AK H01	KOY-1032	\$9.22
1/2	3/16	1/64 1/32	H01	CCGT 431 AK H01	KOY-1034	\$10.68
			H01	CCGT 432 AK H01	KOY-1036	\$10.68



Call Us Or Visit Our Website For Our Complete Selection!

2019-20 MASTER CATALOG

261

LATHE CHUCKS
LIVE CENTERS

WISE ACCESSORIES
WISE JAWS

STRAIGHT SHANK
COLLET HOLDERS

TAP HOLDERS
DRILL CHUCKS

CARBIDE INSERTS
THREADING/GROOVING

CUTTING TOOLS
MACHINERY

PRECISION TOOLS
DEBURRING

COOLANT/FLUIDS
TOOL STORAGE