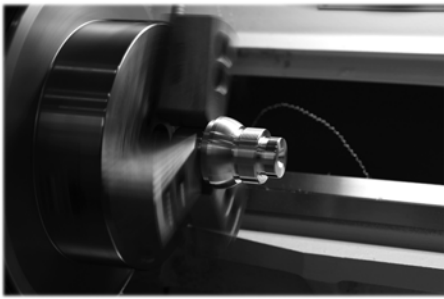


LATHE WORKHOLDING



IN THIS SECTION:

- CNC Lathe Chucks.....66-72
- Hydraulic Cylinders.....73
- Manual/Scroll Chucks.....74-86
- Collet Chucks.....87-92
- Live & Dead Centers.....93-101
- Bar Pullers.....102-105
- 3J/16C/5C Collets.....106-109
- ID Workholding.....110-113
- Lathe Bushings.....114-118

N-200A SERIES CHUCKS-3 JAW 1.5mm x 60° Serrations Power Chucks With Adaptor Plate



- **STRONG® N-200 Series Chucks Are Interchangeable with Kitagawa® B-200 Series Chucks**
- Over 30 years of innovative manufacturing experience
- ISO 9002 and MCS certification
- Rigid inspection process to ensure finished product quality
- 2, 3 & 4 jaw and Extra Large Bore chucks
- OEM on Victor, Okuma, & Leadwell and many other turning centers
- Higher gripping force and larger bore compared to standard chucks
- **STRONG®** Hydraulic cylinders, master jaws, chip covers, wedge plungers, threaded drawnuts, chuck wrenches and adapter plates are available and interchange with Kitagawa® B-200 Series chucks

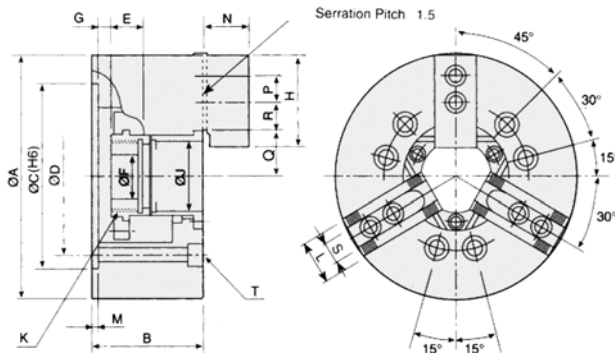
FEATURES:

- Approx. 20% higher speed, higher gripping force and larger bore compared with usual chucks
- Model N-200A chucks are assembled with adapter for ASA B5.9 type A spindles
- Model N-200A chucks are manufactured from high grade alloy steel
- All sliding surfaces are hardened and ground for accuracy and repeatability
- Chucks include all mounting hardware
- Additional charge for threaded drawnut

Strong N Series Chucks Are Interchangeable With Kitagawa® B200 Series Chucks!

Chucks Includes:
1.5mm x 60° Master Jaws
Blank Drawnut • Soft Top Jaws
T-Nuts • Mounting Bolts • Wrench

Chuck Size	Chuck Model	Chuck Dia.	Thru-hole Dia.	Mount	Part Number	Price Each	Chuck Cross Reference
5"	N205	5.315"	1.299"	Flatback	K-205-N-B	\$1,592.00	B-205, HS-05
				A2-4	K-205A04-N-B	\$1,752.00	
				A2-5	K-205A05-N-B	\$1,752.00	
6"	N206	6.654"	1.772"	Flatback	K-206-N-B	\$1,592.00	B206, ATL6, HS-06
				A2-4	K-206A04-N-B	\$1,781.00	
				A2-5	K-206A05-N-B	\$1,781.00	
8"	N208	8.268"	2.047"	Flatback	K-208-N-B	\$1,905.00	B208, ATL8, HS-08
				A2-5	K-208A05-N-B	\$2,040.00	
				A2-6	K-208A06-N-B	\$2,040.00	
10"	N210	10.000"	2.953"	Flatback	K-210-N-B	\$2,387.00	B210, ATL10, HS-10
				A2-6	K-210A06-N-B	\$2,678.00	
				A2-8	K-210A08-N-B	\$2,678.00	
12"	N212	11.969"	3.585"	A2-6	K-212A06-N-B	\$3,600.00	B212, ATL12, HS-12
				A2-8	K-212A08-N-B	\$3,600.00	
15"	N215	15.000"	4.626"	A2-8	K-215A08-N-B	\$4,839.00	B15
				A2-11	K-215A11-N-B	\$4,839.00	
18"	N218	17.717"	4.626"	A2-8	K-218A08-N-B	\$7,012.00	B18
				A2-11	K-218A11-N-B	\$7,012.00	



Full Line Available!
Please call for more information.

Specifications	N205	N206	N208	N210	N212	N215	N218
Through-Hole (mm)	Ø33	Ø45	Ø52	Ø75	Ø91	Ø117.5	Ø117.5
Plunger Stroke (mm)	10	12	16	19	23	23	23
Jaw Stroke (mm)	5.4	5.5	7.4	8.8	10.6	10.6	10.6
Max. Draw Bar Pull Force (kgf)	1700	2200	3400	4300	5500	7240	7240
Max. Gripping Force (kgf)	3600	5700	8800	11000	14300	18355	18355
kgf/cm2	29.6	28.5	26.5	27.5	27.5	23.5	23.5
Max. Speed (r.p.m.)	7000	6000	4900	4200	3300	2500	2000

*Kitagawa is a registered trademark of Kitagawa NorthTech

Call Us Today For All Of Your Machine Tool Needs!



NB-200 SERIES 3 JAW EXTRA LARGE BORE CHUCKS

1.5mm x 60° Serrations Power Chucks

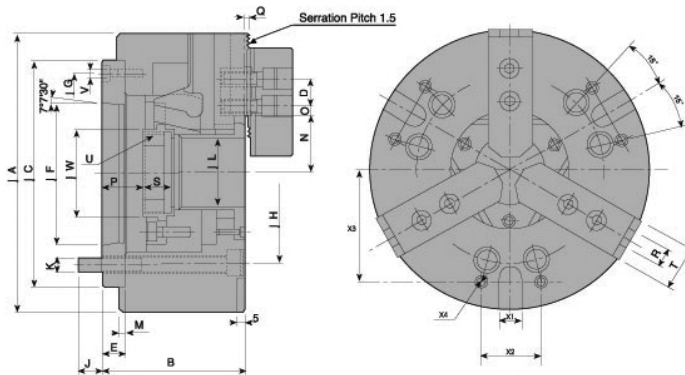


Chucks Includes:
1.5mm x 60° Master Jaws
Blank Drawnut • Soft Top Jaws
T-Nuts • Mounting Bolts • Wrench

Chuck Size	Chuck Model	Chuck Dia.	Thru-hole Dia.	Mount	Part Number	Price Each	Chuck Cross Reference
6"	NB-206	6.654"	2.047"	A2-5	K-206A05-NB-B	\$2,060.00	BB206, MH-206
8"	NB-208	8.268"	2.598"	A2-6	K-208A06-NB-B	\$2,542.00	BB208, MH-208
10"	NB-210	10.000"	3.070"	A2-8	K-210A08-NB-B	\$2,918.00	BB210, MH-210
12"	NB-212	11.969"	4.803"	A2-8	K-212A08-NB-B	\$4,220.00	BB212, MH-212

FEATURES:

- Extra large bore
- Higher speed, gripping force and larger bore compared to other chucks
- Includes adapter plate
- Manufactured from high grade alloy steel
- All sliding surfaces are hardened and ground for accuracy and repeatability
- Chucks include all mounting hardware
- Additional charge for threaded drawnut



Model	Thru-hole (mm)	Plunger Stroke (mm)	Jaw Stroke (mm)	Max. Draw Bar Pull (kgf)	Max Gripping Force (kgf)	Max. Operating Pressure (kgf/cm ²)	Max Speed (RPM)	Matching Cylinder	A	B	C	D	E	J	L	M
NB-206A05	52	12	5.4	2200	5700	18.4	6000	M1552	170	97	140	20	22	16	52	5
NB-208A06	66	16	7.4	3500	8973	20.5	4600	M1868	210	103	170	25	17	19.5	66	5
NB-210A08	78	19	8.8	4300	11000	27.5	4200	M1878	254	113	220	30	18	24	78	5
NB-212A11	122	23	10.6	5800	15000	20.5	3200	M2511	315	134	300	30	22	28	122	5

VA-200 SERIES 3 JAW CLOSED CENTER CHUCKS

1.5mm x 60° Serrations Power Chucks



Full Line Available!
Please call for more information.

Chuck Size	Chuck Model	Chuck Dia.	Mount	Part Number	Price Each	Chuck Cross Reference
6"	V206	6.654"	Flatback	K-206-V-B	\$1,128.60	N06, HC-06
			A2-4	K-206A05-V-B	\$1,326.60	
			A2-5	K-206A06-V-B	\$1,326.60	
8"	V208	8.268"	Flatback	K-208-V-B	\$1,480.05	N08, HC-08
			A2-5	K-208A05-V-B	\$1,727.55	
			A2-6	K-208A06-V-B	\$1,727.55	
10"	V210	10.000"	Flatback	K-210A-V-B	\$1,866.15	N10, HC-10
			A2-6	K-210A06-V-B	\$2,217.60	
			A2-8	K-210A08-V-B	\$2,217.60	
12"	V212	11.969"	A2-6	K-212A06-V-B	\$3,088.80	HC-12
			A2-8	K-212A08-V-B	\$3,088.80	
15"	V215	15.000"	A2-8	K-215A08-V-B	\$6,534.00	
			A2-11	K-215A11-V-B	\$5,671.00	

Model	Jaw Stroke (mm)	Plunger Stroke (mm)	Max. Pull Force (kgf)	Max. Gripping Force (kgf)	Max. Oper. Pressure (kgf/cm ²)	Max. Speed	Weight (kg)	Moment of Inertia (kg?m ²)	Matching Cylinder	Gripping O.D. Range (mm)
V-206	9.2	20	1835	5353	26.5	5200	12	0.045	MS105C	Ø18-Ø165
V-208	9.7	21	2549	7648	25.5	4500	23	0.137	MS125C	Ø26-Ø210
V-210	8.8	25	2957	11013	28.6	4000	34.5	0.3	MS125C	Ø26-Ø254
V-212	10.5	30	4181	15907	27.5	3300	59.5	0.725	MS150C	Ø26-Ø304
V-215	16	35	8362	25391	32.6	3000	101	1.8	MS200C	Ø68-Ø381
V-218	16	35	8362	25391	32.6	2700	116	2.9	MS200C	Ø130-Ø450
V-221	16	35	8362	27838	32.6	1940	181	6.2	MS200C	Ø65-Ø530
V-224	16	35	8362	27838	32.6	1760	216	7	MS200C	Ø152-Ø610
V-232	18.6	35	8362	27838	32.6	600	365	27.3	MS200C	Ø100-Ø810

Call Us Or Visit Our Website For Our Complete Selection!

POWER CHUCKS

NT-200 SERIES CHUCKS-2 JAW 1.5mm x 60° Serrations Power Chucks



Chuck Size	Chuck Model	Chuck Dia.	Thru-hole Dia.	Mount	Part Number	Price Each
5"	NT205	5.315"	1.299"	A2-4	K-T205A04-NT-B	\$2,024.00
				A2-5	K-T205A05-NT-B	
6"	NT206	6.654"	1.772"	A2-4	K-T206A04-NT-B	\$2,060.00
				A2-5	K-T206A05-NT-B	
8"	NT208	8.268"	2.047"	A2-5	K-T208A05-NT-B	\$2,478.00
				A2-6	K-T208A06-NT-B	
10"	NT210	10.000"	2.953"	A2-6	K-T210A06-NT-B	\$3,042.00
				A2-8	K-T210A08-NT-B	
12"	NT212	11.969"	3.585"	A2-6	K-T212A06-NT-B	\$3,774.00
				A2-8	K-T212A08-NT-B	

Full Line Available!
Please call for more information.

Chucks Includes:
1.5mm x 60° Master Jaws
Blank Drawnut • Soft Top Jaws
T-Nuts • Mounting Bolts • Wrench

Model	Thru-hole (mm)	Plunger Stroke (mm)	Jaw Stroke (mm)	Max. Draw Bar Pull (kgf)	Max Gripping Force (kgf)	Max. Operating Pressure (kgf/cm)	Max Speed (RPM)	Matching Cylinder
NT-205	33	10	5.4	1189	2447	19.5	7000	M1036
NT-206	45	12	5.5	1495	3875	18.9	6000	M1246
NT-208	52	16	7.4	2366	5975	18.4	5000	M1552
NT-210	75	19	8.8	2927	7546	18.4	4200	M1875
NT-212	91	23	10.6	3875	9789	18.4	3300	M2091

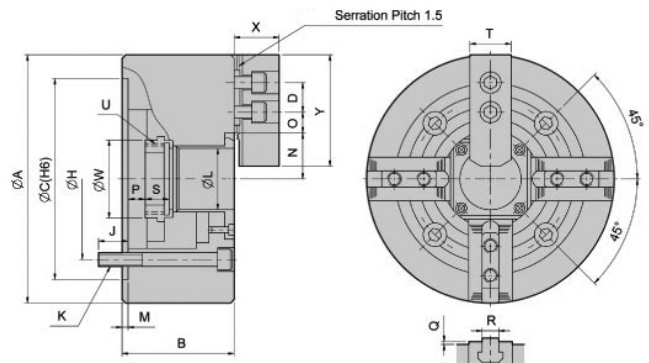
NIT-200 SERIES CHUCKS-4 JAW 1.5mm x 60° Serrations Power Chucks



Chuck Size	Chuck Model	Chuck Dia.	Thru-hole Dia.	Mount	Part Number	Price Each
6"	NIT206	6.653"	1.772"	A2-5	K-F206A5-NIT-B	\$2,397.00
				A2-6	K-F208A06-NIT-B	
8"	NIT208	8.268"	2.047"	A2-5	K-F208A05-NIT-B	\$3,187.00
				A2-6	K-F208A06-NIT-B	
10"	NIT210	10.000"	2.953"	A2-6	K-F210A06-NIT-B	\$3,624.00
				A2-8	K-F210A08-NIT-B	
12"	NIT212	11.969"	3.585"	A2-6	K-F212A06-NIT-B	\$4,426.00
				A2-8	K-F212A08-NIT-B	

Chucks Includes:
1.5mm x 60° Master Jaws
Blank Drawnut • Soft Top Jaws
T-Nuts • Mounting Bolts • Wrench

Full Line Available!
Please call for more information.



Model	Thru-hole (mm)	Plunger Stroke (mm)	Jaw Stroke (mm)	Max. Draw Bar Pull (kgf)	Max Gripping Force (kgf)	Max. Operating Pressure (kgf/cm)	Max Speed (RPM)	Matching Cylinder
NIT-206	45	12	5.5	2243	5812	28.5	4500	M1246
NIT-208	52	16	7.4	3558	9075	26.5	3600	M1552
NIT-210	75	19	8.8	4385	11319	27.5	3200	M1875
NIT-212	91	23	10.6	5812	14990	27.5	2700	M2091

Model	A	B	C (H6)	D	H	J	K	L	M	N max.	O max.	O min.	P max.	P min.	Q	R	S	T	U max.	W	X	Y
NIT-206	169	81	140	20	104.78	16	4-M10x80	45	5	32	22.75	9.25	11	-1	2	12	19	31	M55X2	60	37	73
NIT-208	210	91	170	25	133.35	20	4-M12x90	52	5	38.7	29.75	14.75	14.5	-1	2	14	20.5	35	M60X2	66	38	95
NIT-210	254	100	220	30	171.45	22	4-M16x100	75	6	51	33.75	14.25	8.5	-10.5	2	16	25	40	M85X2	94	43	110
NIT-212	304	110	220	30	171.45	23	4-M16x110	91	6	61.3	45.75	15.75	8	-15	2	21	28	50	M100X2	108	51	130
NIT-215	381	133	300	43	235	35	4-M20x135	117.5	6	82	45.25	16.75	7	-16	5	22	43	62	M130X2	139	66	165

Call Us Today For All Of Your Machine Tool Needs!