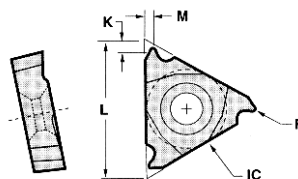


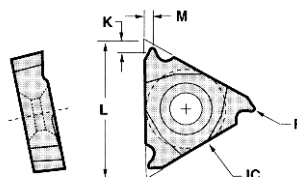
## T SERIES LAYDOWN - EXTERNAL THREADING INSERTS



**Full Line Available!**  
Please call for more information.

TPI If Threading	IC Both Threading & Grooving	L Both Threading & Grooving	IF THREADING			For Use With Holder	Left or Right	Grade AT22 Part Number	Price Each	Grade GP22 Part Number	Price Each	Grade GP50 Part Number	Price Each
			M	K	R								
16-48	3/8	0.65	0.031	0.024	0.003	16ER	RIGHT	T-16ERA60A2	\$13.65	T-16ERA60G22	\$13.65	T-16ERA60G50	\$13.65
						16EL	LEFT	T-16ELA60A2	\$13.65	-	-	-	
8-48	3/8	0.65	0.059	0.043	0.003	16ER	RIGHT	T-16ERAG60A2	\$13.65	T-16ERAG60G22	\$13.65	T-16ERAG60G50	\$13.65
						16EL	LEFT	T-16ELAG60A2	\$13.65	-	-	-	
8-14	3/8	0.65	0.059	0.043	0.007	16EL	LEFT	T-16ELG60A2	\$13.65	-	-	-	-
5-7	1/2	0.87	0.098	0.067	0.016	22ER	RIGHT	-	-	-	-	-	-

## T SERIES LAYDOWN - INTERNAL THREADING INSERTS



**Full Line Available!**  
Please call for more information.

TPI If Threading	IC Both Threading & Grooving	L Both Threading & Grooving	IF THREADING			For Use With Holder	Left or Right	Grade AT22 Part Number	Price Each	Grade GP22 Part Number	Price Each	Grade GP50 Part Number	Price Each
			M	K	R								
16-48	3/8	0.65	0.031	0.024	0.003	16NR	RIGHT	-	-	-	-	T-16NRA60G50	\$13.65
						16NL	LEFT	-	-	-	-	T-16NLA60G50	\$11.57
8-48	3/8	0.65	0.059	0.043	0.003	16NR	RIGHT	T-16NRAG60A2	\$13.65	T-16NRAG60G22	\$13.65	T-16NRAG60G50	\$13.65
						16NL	LEFT	-	-	-	-	T-16NLAG60G50	\$13.65
8-14	3/8	0.65	0.059	0.043	0.007	16NR	RIGHT	-	-	T-16NRG60G22	\$13.65	T-16NRG60G50	\$13.65
						16NL	LEFT	-	-	-	-	T-16NLG60G50	\$13.65
5-7	1/2	0.87	0.098	0.067	0.01	16NR	RIGHT	-	-	T-22NRN60G22	\$19.05	T-22NRN60G50	\$19.05
						16NL	LEFT	-	-	-	-	T-22NLN60G50	\$19.05

## GRADE INFORMATION



**Full Line Available!**  
Please call for more information.

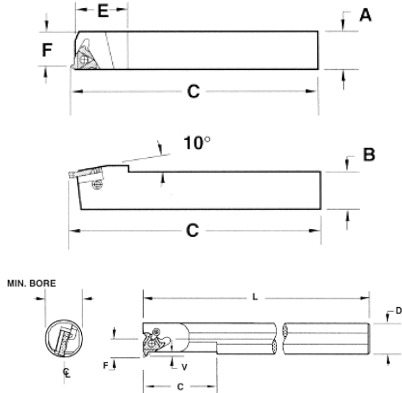
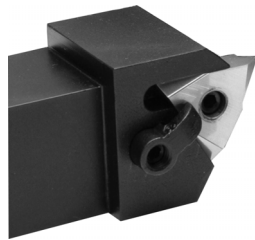
Grade	Class	Description	Material	Application
GP4	C1/C5A K30/P30	Coated - Sub-Micron	Aluminum, Cast Iron, 300/400 Stainless Steel, Non-Metals, Carbon/Alloy Steel, Ductile Iron, Chrome	Extremely tough grades that perform well at very slow SFPM with minimal breakage or chipping.
GP22	C1 K30	Coated - Sub-Micron	Aluminum, Cast Iron, 300 Stainless Steel, High Temp Alloys, Non-Metals, Chrome	Extremely tough grades that perform well at very slow SFPM with minimal breakage or chipping.
GP3	C3	Coated - Sub-Micron	High Temp Alloys, 300 Stainless Steel	Versatile grades that combine high hardness with toughness
AC3	K15-K25 M05-M20	Coated - Sub-Micron	TiAlN Coated For High Temp Alloys & 300 Series Stainless Steel	-
GP50	C5	Coated	Carbon/Alloy Steel, 400 Stainless Steel, Ductile Iron	General purpose grades, coated grades can normally be ran at higher SFPM
AC50	P20-P35 M15-M30	Coated	TiAlN Coated For 400 Series Stainless Steel & Ductile Cast Iron	-
C3	C2-C3	Coated	Non Ferrous Metals, Plastics	-

Call Us Or Visit Our Website For Our Complete Selection!

LATHE CHUCKS  
LIVE CENTERS  
VISE JAWS  
VISE ACCESSORIES  
STRAIGHT SHANK  
COLLET HOLDERS  
TAP HOLDERS  
DRILL CHUCKS  
CARBIDE INSERTS  
THREADING/GROOVING  
CUTTING TOOLS  
MACHINERY  
PRECISION TOOLS  
DEBURRING  
COOLANT/FLUIDS  
TOOL STORAGE

# T-SERIES LAYDOWN THREADING HOLDERS

## INTERNAL & EXTERNAL THREADING HOLDERS



### T SERIES LAYDOWN EXTERNAL THREADING HOLDERS

For Use With Holder	Left or Right	A	B	C	E	F	Part Number	Price Each
16ER	RIGHT	0.75	0.75	5	1.20	0.75	T-AL075-3R	\$92.19
	RIGHT	1.00	1.00	6	1.20	1.00	T-AL100-3R	\$93.63
22ER	RIGHT	1.00	1.00	6	1.42	1.00	T-AL100-4R	\$93.63
22EL	LEFT	1.00	1.00	6	1.42	1.00	T-AL100-4L	\$93.63
27ER	RIGHT	1.25	1.25	7	1.57	1.25	T-AL125-5R	\$105.06

### T SERIES LAYDOWN INTERNAL THREADING HOLDERS

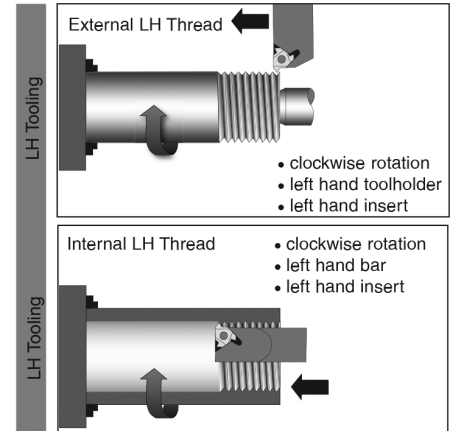
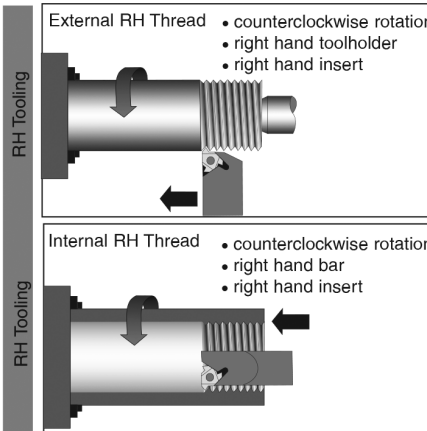
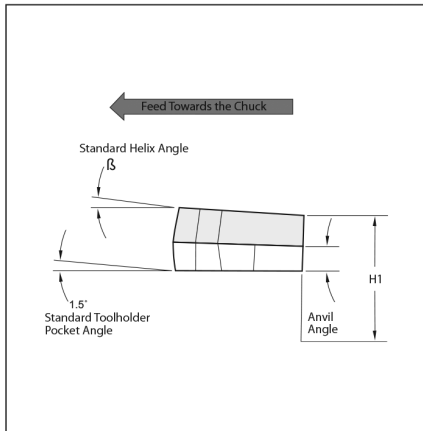
For Use With Holder	Left or Right	Min Bore For Boring Bars	C	D	F	L	Part Number	Price Each
16NR	RIGHT	0.625	2.50	0.63	0.312	7	T-NVR625-3R	\$107.83
	RIGHT	0.95	2.75	0.75	0.51	7	T-AVR750-3R	\$125.09
	RIGHT	1.15	3.00	1.00	0.64	10	T-AVR100-3R	\$158.00
	RIGHT	1.40	3.00	1.25	0.77	10	T-AVR125-3R	\$165.15
	RIGHT	1.70	3.00	1.50	0.90	12	T-AVR150-3R	\$223.81
22NR	RIGHT	1.10	2.75	0.75	0.61	7	T-NVR750-4R	\$107.83
	RIGHT	1.20	3.00	1.00	0.71	10	T-AVR100-4R	\$158.00

## LAYDOWN TECHNICAL INFORMATION

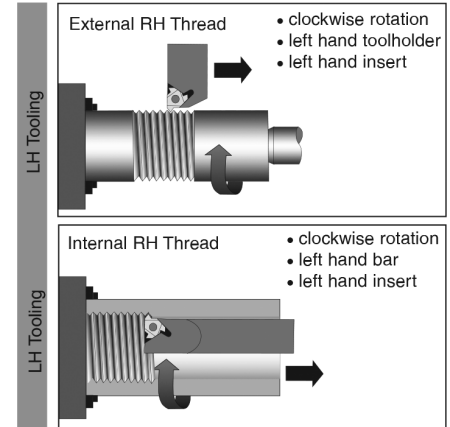
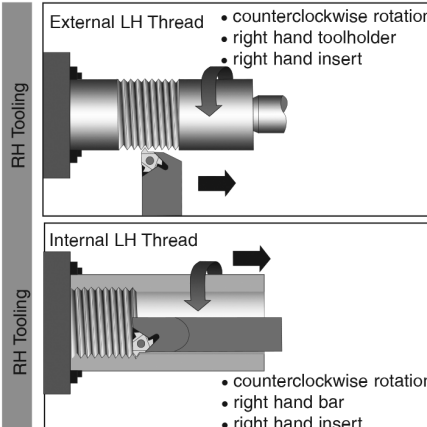
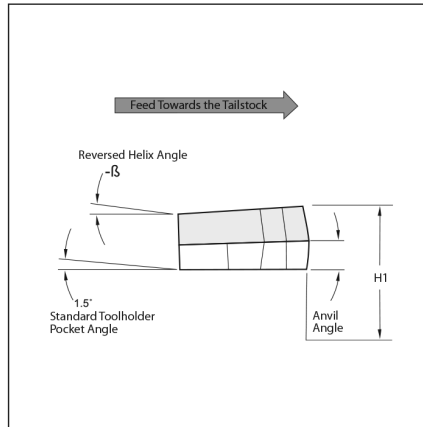
**Full Line Available!**  
Please call for more information



### Feed direction towards the chuck



### Feed direction towards the tailstock



Call Us Today For All Of Your Machine Tool Needs!