

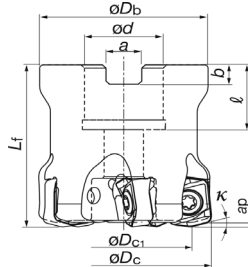
TUNGALOY® MILLING CUTTERS & INSERTS

DOFEED

SUPER HIGH FEED MILLING CUTTERS



- For face milling, slotting pocketing & general shoulder milling
- Cutters feature air hole
- Highly rigid cutter body
- Ideal for general shoulder milling at high feed
- High performance levels with a diverse range of applications
- Thicker insert for rigidity
- Low cutting forces
- Excellent surface finish



TXN03R SERIES SHELL MILL STYLE

No of Flutes	øDc	øDc1	øDb	ød	?	Lf	b	a	K°	Part Number	Price Each	Using Insert Series
COARSE PITCH												
5	1.5	1.25	1.461	0.500	0.750	1.574	0.197	0.315	17°	TO-6743508	\$441.90	LNMU03--
5	2.0	1.718	1.693	0.750	0.750	1.969	0.197	0.315	17°	TO-6715174	\$533.60	LNMU03--
CLOSE PITCH												
6	1.5	1.25	1.461	0.500	0.750	1.969	0.197	0.315	17°	TO-6736729	\$490.40	LNMU03--
8	2.0	1.718	1.693	0.750	0.750	1.969	0.197	0.315	17°	TO-6988406	\$647.30	LNMU03--
10	2.0	1.718	1.693	0.750	0.750	1.969	0.197	0.315	17°	TO-6683960	\$977.25	LNMU03--

TXN06R SERIES SHELL MILL STYLE

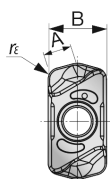
No of Flutes	øDc	øDc1	øDb	ød	?	Lf	b	a	K°	Part Number	Price Each	Insert
COARSE PITCH												
4	2.0	1.513	1.85	0.750	0.750	1.969	0.197	0.315	15°	TO-6993972	\$480.90	LNMU06--
4	2.5	2.012	2.323	0.750	0.750	1.969	0.197	0.315	15°	TO-6705804	\$524.70	LNMU06--
5	3.0	2.512	2.835	1.00	1.024	2.48	0.236	0.374	15°	TO-6993973	\$605.20	LNMU06--
6	4.0	3.512	3.819	1.50	1.457	2.48	0.394	0.626	15°	TO-6710722	\$715.80	LNMU06--
8	5.0	4.512	3.819	1.50	1.457	2.48	0.394	0.626	15°	TO-6710723	\$960.10	LNMU06--
10	6.0	5.512	4.331	2.00	1.496	2.48	0.433	0.748	15°	TO-6710724	\$1,233.60	LNMU06--
CLOSE PITCH												
5	2.0	1.513	1.85	0.750	0.750	1.969	0.197	0.315	15°	TO-6879571	\$533.00	LNMU06--
6	2.5	2.012	2.323	0.750	0.750	1.969	0.197	0.315	15°	TO-6995674	\$635.00	LNMU06--
7	3.0	2.512	2.835	1.00	1.024	2.50	0.236	0.374	15°	TO-6879572	\$732.30	LNMU06--
10	4.0	3.512	3.819	1.50	1.457	2.48	0.394	0.626	15°	TO-6710726	\$951.20	LNMU06--
12	5.0	4.512	3.819	1.50	1.457	2.48	0.394	0.626	15°	TO-6710727	\$1,118.80	LNMU06--
14	6.0	5.512	4.331	2.00	1.496	2.48	0.433	0.748	15°	TO-6710728	\$1,485.70	LNMU06--

LNMU MILLING INSERTS

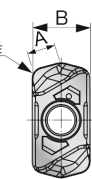


LNMU03 Type Inserts

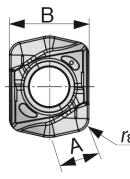
LNMU06 Type Inserts



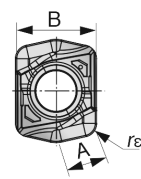
MJ (for general purpose)



ML (for low cutting force)



MJ (for general purpose)



ML (for low cutting force)

Description	A	B	T	re	Grade AH725	Grade AH130	Grade AH120	Grade AH3035	Price Each
LNMU0303ZER-MJ	0.456	0.236	0.169	0.047	TO-6864162	TO-6864164	-	TO-6707135	\$16.90
LNMU0303ZER-ML	0.456	0.236	0.169	0.047	TO-6864165	TO-6864163	-	TO-6707136	\$16.90
LNMU06X5ZER-MJ	0.591	0.472	0.276	0.079	TO-6869924	TO-6869923	TO-6881593	TO-6995912	\$20.40
LNMU06X5ZER-ML	0.591	0.472	0.276	0.079	TO-6885143	TO-6885144	TO-6881594	TO-6995913	\$20.40

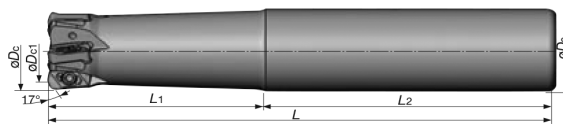
Call Us Today For All Of Your Machine Tool Needs!

SUPER HIGH FEED MILLING CUTTERS

DOFEED

SUPER HIGH FEED MILLING CUTTERS

- For face milling, slotting pocketing & general shoulder milling
- Cutters feature air hole
- Highly rigid cutter body
- Ideal for general shoulder milling at high feed
- High performance levels with a diverse range of applications
- Thicker insert for rigidity
- Low cutting forces
- Excellent surface finish



Cutter Description	No of Flutes	øDc	øDs	øDc1	L	L1	L2	Part Number	Price Each	Uses Insert Series	Clamping screw	Wrench
Coarse Pitch												
EXN03R062U0062-02	2	0.625	0.625	0.374	4.00	1.25	2.75	TO-6865490	\$185.50	LNMU 03	CSPB-2.5	IP-8D
EXN03R068U0062-02	2	0.688	0.625	0.433	4.00	1.25	2.75	TO-6865371	\$185.50		CSPB-2.5	IP-8D
EXN03R075U0075-02	2	0.750	0.750	0.496	5.00	2.00	3.00	TO-6715182	\$222.80		CSPB-2.5	IP-8D
EXN03R087U0075-02	2	0.875	0.750	0.634	5.00	2.00	3.00	TO-6715183	\$222.80		CSPB-2.5	IP-8D
EXN03R100U0100-04	4	1.000	1.000	0.756	5.50	2.50	3.00	TO-6715184	\$339.60		CSPB-2.5	IP-8D
EXN03R112U0100-04	4	1.125	1.000	0.882	5.50	2.50	3.00	TO-6715185	\$339.60		CSPB-2.5	IP-8D
EXN03R125U0125-05	5	1.250	1.250	1.010	6.00	3.00	3.00	TO-6715186	\$383.60		CSPB-2.5	IP-8D

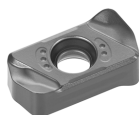
Close Pitch												
EXN03R075U0075-03	3	0.750	0.750	0.496	5.00	2.00	3.00	TO-6864898	\$247.50	LNMU 03	CSPB-2.5	IP-8D
EXN03R087U0075-03	3	0.875	0.750	0.634	5.00	2.00	3.00	TO-6864956	\$247.50		CSPB-2.5	IP-8D
EXN03R100U0100-05	5	1.000	1.000	0.756	5.50	2.50	3.00	TO-6864930	\$377.00		CSPB-2.5	IP-8D
EXN03R112U0100-05	5	1.125	1.000	0.882	5.50	2.50	3.00	TO-6865373	\$377.00		CSPB-2.5	IP-8D
EXN03R125U0125-06	6	1.250	1.250	1.010	6.00	3.00	3.00	TO-6864901	\$399.60		CSPB-2.5	IP-8D

Long												
EXN03R062U0062-02L	2	0.625	0.625	0.374	6.00	2.00	4.00	TO-6864929	\$231.10	LNMU 03	CSPB-2.5	IP-8D
EXN03R068U0062-02L	2	0.688	0.625	0.433	6.00	1.00	5.00	TO-6865372	\$231.10		CSPB-2.5	IP-8D
EXN03R075U0075-03L	3	0.750	0.750	0.496	6.50	3.50	3.00	TO-6864899	\$308.20		CSPB-2.5	IP-8D
EXN03R087U0075-03L	3	0.875	0.750	0.634	6.50	1.25	5.25	TO-6864957	\$308.20		CSPB-2.5	IP-8D
EXN03R100U0100-04L	4	1.000	1.000	0.756	7.00	4.00	3.00	TO-6864873	\$393.50		CSPB-2.5	IP-8D
EXN03R112U0100-04L	4	1.125	1.000	0.882	7.00	1.50	5.50	TO-6864874	\$399.40		CSPB-2.5	IP-8D
EXN03R125U0125-05L	5	1.250	1.250	1.010	8.00	5.00	3.00	TO-6864900	\$421.80		CSPB-2.5	IP-8D

Cutter Description	No of Flutes	øDc	øDs	øDc1	L	L1	L2	Part Number	Price Each	Uses Insert Series	Clamping screw	Wrench
Coarse Pitch												
EXN06R125U0125W02	2	1.250	1.250	0.766	5.00	3.00	2.00	TO-6879573	\$319.60	LNMU 06	CSPB-5	IP-20D
EXN06R150U0125W03	3	1.500	1.250	1.014	6.00	3.50	2.50	TO-6879576	\$383.40		CSPB-5	IP-20D

Long Type												
EXN06R125U0125-02L	2	1.250	1.250	0.766	8.00	5.00	3.00	TO-6879574	\$351.50	LNMU 06	CSPB-5	IP-20D
EXN06R150U0125-03L	3	1.500	1.250	1.014	10.00	2.00	8.00	TO-6879577	\$421.70		CSPB-5	IP-20D

LNMU MILLING INSERTS



Description	A	B	T	re	Grade AH725	Grade AH130	Grade AH120	Grade AH3035	Price Each
LNMU0303ZER-MJ	0.456	0.236	0.169	0.047	TO-6864162	TO-6864164	-	TO-6707135	\$16.90
LNMU0303ZER-ML	0.456	0.236	0.169	0.047	TO-6864165	TO-6864163	-	TO-6707136	\$16.90
LNMU06X5ZER-MJ	0.591	0.472	0.276	0.079	TO-6869924	TO-6869923	TO-6881593	TO-6995912	\$20.40
LNMU06X5ZER-ML	0.591	0.472	0.276	0.079	TO-6885143	TO-6885144	TO-6881594	TO-6995913	\$20.40

Grade	Material	Description
AH725	P,K,S,H	Well Balanced Wear and Chipping Resistance, Suitable for steels and cast Irons
AH130	M P	Excellent Balance between Hardness and toughness, suitable for stainless steels
AH3035	P	High Surface resistance, Suitable for Heavy Interrupted Cutting
AH120	P,K,S	Tough Substrate with high reliability, Outstanding wear resistance, Ideal for cast Iron milling

Call Us Or Visit Our Website For Our Complete Selection!

2019-20 MASTER CATALOG

303

LATHE CHUCKS
LIVE CENTERS

WISE JAWS
WISE ACCESSORIES

STRAIGHT SHANK
COLLET HOLDERS

TAP HOLDERS
DRILL CHUCKS

CARBIDE INSERTS
THREADING/GROOVING

CUTTING TOOLS
MACHINERY

PRECISION TOOLS
DEBURRING

COOLANT/FLUIDS
TOOL STORAGE