

TOOL BITS/CUT-OFF BLADES

B

SQUARE TOOL BITS High Speed Steel or Cobalt

BEST VALUE



- Applications:**
- **HSS** is ideal for mild steel, alloys and tool steels-makes a superior finishing tool
 - **COBALT** performs well where high heat is present-used for heavy cuts in hard materials

REGULAR LENGTH

Square Size	OAL	HSS		M42 8% Cobalt	
		Part Number	Price Each	Part Number	Price Each
1/8	2-1/2"	A-2000-0001	\$1.15	A-2000-0041	\$2.97
3/16	2-1/2"	A-2000-0002	\$1.15	A-2000-0042	\$2.97
1/4	2-1/2"	A-2000-0003	\$1.68	A-2000-0043	\$3.14
5/16	2-1/2"	A-2000-0004	\$2.17	A-2000-0044	\$4.40
3/8	3"	A-2000-0005	\$3.66	A-2000-0045	\$7.66
7/16	3-1/2"	A-2000-0006	\$5.21	A-2000-0046	\$9.90
1/2	4"	A-2000-0007	\$7.10	A-2000-0047	\$14.85
5/8	4-1/2"	A-2000-0008	\$11.98	A-2000-0048	\$24.22
3/4	5"	A-2000-0009	\$19.50	A-2000-0049	\$37.13
1"	7"	A-2000-0011	\$42.24	A-2000-0051	\$90.28

EXTRA LONG LENGTH

Square Size	OAL	HSS		M35 5% COBALT	
		Part Number	Price Each	Part Number	Price Each
1/4	4"	A-2000-0071	\$1.90	A-2000-0020	\$3.50
1/4	6"	A-2000-0072	\$3.40	A-2000-0021	\$6.20
1/4	8"	A-2000-0073	\$4.50	A-2000-0022	\$8.68
5/16	6"	A-2000-0075	\$4.49	A-2000-0025	\$7.59
3/8	4"	A-2000-0077	\$4.65	A-2000-0027	\$7.92
3/8	6"	A-2000-0078	\$6.47	A-2000-0028	\$8.97
3/8	8"	A-2000-0079	\$8.80	A-2000-0029	\$15.31
1/2	6"	A-2000-0083	\$10.30	A-2000-0060	\$20.43

ROUND TOOL BITS High Speed Steel

BEST VALUE



Size	Part Number	Price Each
1/8 x 2-3/4"	A-2000-0331	\$1.19
3/16 x 3-1/2"	A-2000-0353	\$1.39
1/4 x 4"	A-2000-0377	\$1.99
3/8 x 5"	A-2000-0385	\$3.30
1/2 x 6"	A-2000-0389	\$9.99

RECTANGULAR TOOL BITS High Speed Steel

BEST VALUE



- Applications:**
- **HSS** is ideal for mild steel, alloys and tool steels-makes a superior finishing tool

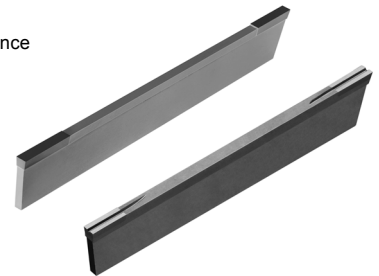
Size H x W	OAL	Part Number	Price Each
1/4 x 3/8	3"	A-2000-0203	\$2.63
1/4 x 1/2	4"	A-2000-0220	\$4.19
1/4 x 3/4	5"	A-2000-0235	\$8.37
3/8 x 3/4	5"	A-2000-0248	\$10.26
3/8 x 1-1/4	6"	A-2000-0252	\$20.90
1/2 x 3/4	5"	A-2000-0257	\$12.06
1/2 x 1-1/2	7"	A-2000-0261	\$41.00
5/8 x 1-1/2	7"	A-2000-0270	\$42.50
3/4 x 1-1/2	7"	A-2000-0276	\$45.09

CUT-OFF BLADES

MICRO 100

Carbide Tipped

- Double ended for double performance
- Hardened and precision ground steel blades
- Tips are hollow ground all over for longer tool life
- "T" styled over entire blade length to fit all "T" type holders
- Also available with V-groove



B

Width	Height	OAL	Standard		With V-Groove	
			Part Number	Price Each	Part Number	Price Each
1/16"	1/2"	4-1/2"	MI-T100	\$47.90	MI-T100V	\$53.92
5/64"			MI-T101	\$47.90	MI-T101V	\$53.92
3/32"			MI-T102	\$46.10	MI-T102V	\$52.70
1/8"			MI-T103	\$46.10	MI-T103V	\$52.70
3/32"	11/16"	5"	MI-T104	\$51.45	MI-T104V	\$57.06
1/8"			MI-T105			
5/32"			MI-T106			
3/16"			MI-T107			
1/8"	3/4"	5"	MI-T108	\$55.65	MI-T108V	\$59.22
5/32"			MI-T109			
3/16"			MI-T110			
1/8"	7/8"	6"	MI-T111	\$55.65	MI-T111V	\$61.28
5/32"			MI-T112			
3/16"			MI-T113			

FLYCUTTER HEADS

- Vibra-core design with 1/2 tool bit capacity
- Uses larger 1/2 and 3/8 tool bits for larger cuts
- Larger 1/4- 20 set screws
- Heat treated and balanced
- Sizes available: 1-1/2", 2" and 2-1/2" diameter



MADE IN THE
USA

SIERRA AMERICAN
MULTI-SYSTEMS

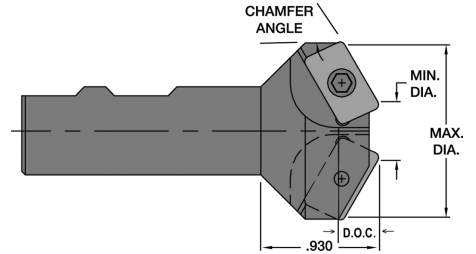
Size	Part Number	Price
1-1/2"	SIE-FC-1.5	\$36.58
2"	SIE-FC-2.0	\$41.20
2-1/2"	SIE-FC-2.5	\$44.46
Set	SIE-FC-3S	\$114.39

Call Us Today For All Of Your Machine Tool Needs!

MILLING CUTTERS/CHAMFER MILLS

INDEXABLE CHAMFER MILLS

- Can be used for countersinking, ID chamfering and facing, as well as exterior chamfering
- Features Weldon shank
- Metric sizes also available
- 16mm parallelogram insert provides for extra length of cut
- All holders use same insert (Insert sold separately)



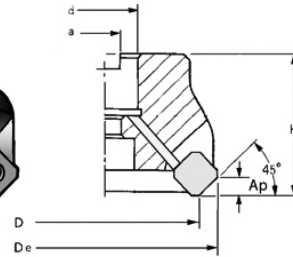
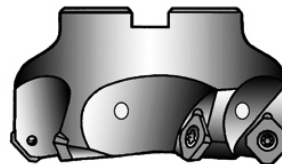
Min Dia	Max. Dia.	Weldon Shank	Chamfer Angle	Included Angle	No. of Flutes	Depth of Cut	Chamfer Mill Part Number	Price Each	Insert For Steels/Stainless	Screw	Torx Wrench
0.750	1.303	3/4	30°	60°	2	0.479	CHM-750-30-ET	\$97.29	APKT1604PDTR-YG \$10.70 EACH	19043 \$2.50 ea	19555 \$4.25 ea
0.688	1.414	3/4	41°	82°	2	0.418	CHM-688-41-ET	\$97.29			
0.688	1.471	3/4	45°	90°	2	0.391	CHM-688-45-ET	\$97.29			
0.500	1.458	3/4	60°	120°	2	0.277	CHM-500-60-ET	\$97.29			
1.000	1.553	1	30°	60°	3	0.479	CHM1000-30-ET	\$106.61			
0.938	1.664	1	41°	82°	3	0.418	CHM-938-41-ET	\$106.61			
0.938	1.721	1	45°	90°	3	0.391	CHM-938-45-ET	\$106.61			
0.750	1.708	1	60°	120°	3	0.277	CHM-750-60-ET	\$106.61			
1.250	1.803	1-1/4	30°	60°	3	0.479	CHM-1250-30-ET	\$130.41			
1.188	1.914	1-1/4	41°	82°	3	0.418	CHM-1188-41-ET	\$130.41			
1.188	1.971	1-1/4	45°	90°	3	0.391	CHM-1188-45-ET	\$130.41			
1.000	1.958	1-1/4	60°	120°	3	0.277	CHM-1000-60-ET	\$130.41			
1.500	2.053	1-1/2	30°	60°	3	0.479	CHM-1500-30-ET	\$167.67			
1.438	2.164	1-1/2	41°	82°	3	0.418	CHM-1438-41-ET	\$167.67			
1.428	2.221	1-1/2	45°	90°	3	0.391	CHM-1438-45-ET	\$167.67			
1.250	2.208	1-1/2	60°	120°	3	0.277	CHM-1250-60-ET	\$167.67			

45° LEAD HIGH POSITIVE SHELL MILLS

For Use With SDKT1204 Series Inserts



CALL FOR OUR HOT MILLING SPECIALS!



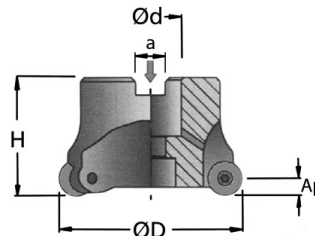
Dia D	Arbor Hole d	Key Width a	Flute Length H	No. of Flutes	AP	Part Number	Price Each	Insert Screw	Torx Wrench [C]
2.00	0.750	0.3125	1.75	4	0.236	M-SSD12F-2075-4	\$195.00	M-SC-AP16 \$2.50	TX-208 \$6.50
2.00	0.750	0.3125	1.75	5	0.236	M-SSD12F-2075-5	\$195.00		
3.00	1.000	0.3750	2	5	0.236	M-SSD12F-3010-5	\$310.00		
4.00	1.250	0.5000	2	6	0.236	M-SSD12F-4012-6	\$419.00		
5.00	1.500	0.6250	2	7	0.236	M-SSD12F-5015-7	\$542.00		

BUTTON INSERT SHELL MILLS

For Use With RDMT1204 Series Inserts



CALL FOR OUR HOT MILLING SPECIALS!



Dia D	Arbor Hole d	Key Width a	Flute Length H	No. of Flutes	AP	Part Number	Price Each	Insert Screw	Torx Wrench [C]
2.00	0.750	0.3125	1.75	4	0.236	M-SRD12-2075-4	\$174.00	M-SC-AP16 \$2.50	TX-208 \$6.50
3.00	1.000	0.375	2	6	0.236	M-SRD12-3010-6	\$310.00		
4.00	1.250	0.5	2	7	0.236	M-SRD12-4012-7	\$419.00		

Call Us Today For All Of Your Machine Tool Needs!