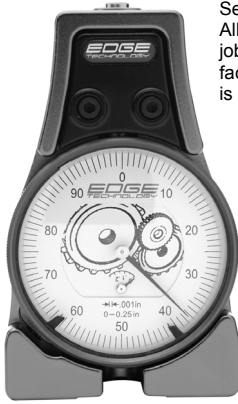
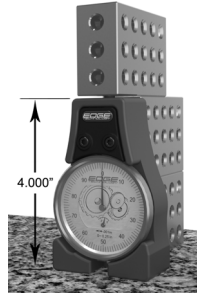


TOOL SETTERS

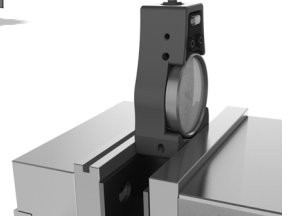
TOUCH OFF GAGE



Set tools accurately! Dramatically decrease set up time and eliminate tool path mismatch. Allows you to standardize the way tool offsets are measured in your shop, ensuring every job is setup the same way and runs without issue. Just lower the tool down onto the contact face until the indicator reads zero. At that point, you can be confident that the tool tip is exactly 4 inches from the surface the gage is sitting on.



- Accurately establishes tool length offsets for CNC milling machines
- The contact face is lightly spring loaded
- Contact face diameter is 0.250"
- Rectangular base and recessed indicator face allows fit between vise jaws on a pair of parallels
- Offset height 4.000 in (101.6mm)
- Large 2.2" easy to read indicator face
- Easy calibration check using 1-2-3 blocks
- Gage graduations 0.001"-repeatability 0.0002"
- Body and contact face are red anodized 6061-T6 aluminum
- Base: 2.4" wide x 1.3" depth x 4" height
- Padded case and manual included



TOUCH OFF GAGE
Part # EDGE-52000
\$99.99 ea

Z-AXIS TOOL SETTER



- Positioning accuracy and repeatability: 0.0004"
- Set "0" point with built-in dial indicator
- Height: 2" or 4" (with magnetic base)
- Dimensions: 1.45" x 1.45" x 2" height

Z-AXIS SETTER
2" Height
Part # A-4401-0050
\$95.00
With Magnetic Base
4" Height
Part # A-4401-0051
\$150.00

Z-AXIS TOOL SETTER



- Positioning accuracy and repeatability: 0.0002"
- Easy to set "0" point with built-in dial indicator
- Includes magnetic base
- Dimensions: 2" x 2" x 4" height

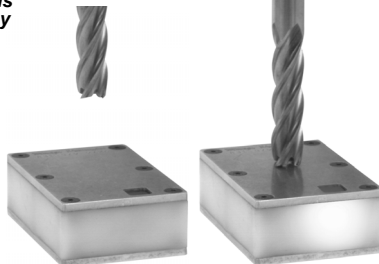
PRO Z-AXIS SETTER
4" Height
Part # A-4401-0062
\$230.00

MIRAGE TOOL SET

The Fowler/Mirage Tool Set Is An Easy And Affordable Way To Set Z Depths Quickly And Accurately!



- Can be operated directly off table or from machine vise
- Aluminum contact face eliminates carbide chipping on cutting tools
- Repeatability: .0002"
- Block dimensions: 1" x 2" x 3"
- Batteries included



Slowly lower cutting tool toward Tool Set ...Indicator will light up upon contact!

Part Number	Price
FOW-54-575-750	\$99.00

Z-AXIS TOOL SETTER Ultra Precision



- Low spring force to avoid breaking of small size endmills and drills
- Accuracy: .0004"
- 2" height
- Built in dial indicator
- Range: 0 - 0.1"

Z-AXIS SETTER
2" Height
Part # A-4401-0054
\$250.00

PRECISION CENTERING INDICATOR

- Quick, accurate, easy centering in boring and milling set-up on horizontal or vertical machines
- Operates at an angle from horizontal to vertical machines and from internal to external diameter without any change by simply changing the feeler
- Face of the indicator remains stationary at any desired position while the machine spindle rotates, leaving the operator with hands free to accurately position the table

- Includes:**
- Restraining rod
 - Center point feeler
 - 2, 4 & 6" straight feeler
 - 2, 4 & 6" curved feeler



Specifications	
Body Length	5-1/2"
Shank	3/8" dia x 7/8" long
Feeler Ball	1/8" dia
Measuring Range	250 axis offset
Capacity	Internal: 5/32-4-1/4" dia External 0-4-1/4" dia
Speed	Up to 800 RPM
Locating Accuracy	.0002" of true center

Centering Indicator
Part # A-4400-0020
\$125.00

Call Us Today For All Of Your Machine Tool Needs!