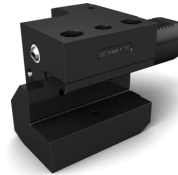


What is VDI?

The main principle behind the **VDI System** is a quick-change, cam-operated clamping system for each toolholder within the tool disc. Tool changes can therefore be performed within seconds, rather than within minutes as with the traditional block system. The toolholders can also be preset away from the lathe on a presetter. This quick-change design principle has been employed in Western Europe for many years, but is relatively new to North America. We offer the full range of VDI quick-change precision toolholders for CNC lathes. We offer the largest selection from several suppliers with extensive stock at competitive prices. Shanks from 20 to 80mm are offered. All VDI holders are manufactured to the strictest tolerances and conform to **DIN 69880 and VDI3425**.

Other Features Include:

- Heat-treated steel with approx. 700N/mm² tensile strength
- Hardened and ground cylindrical shaft
- Ground tool seat faces and shoulder black oxidized to retard oxidation
- Internal coolant supplies with adjustable ball-type nozzles square tools can be preset with spring loaded plates

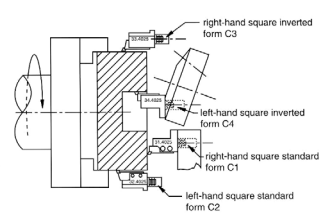
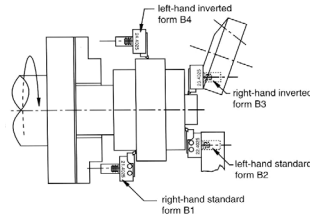
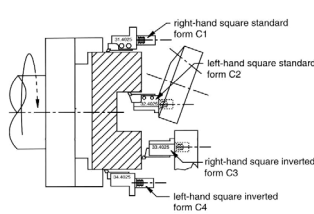
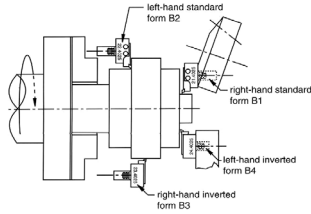


left-hand (clockwise) spindle rotation

left-hand (clockwise) spindle rotation

right-hand (counterclockwise) spindle rotation

right-hand (counterclockwise) spindle rotation

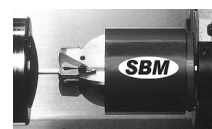


VDI SHANK BAR PULLERS

Coolant or Air Actuated

An Inexpensive And Simple Way To Automate Your CNC Lathe- Eliminate Manual Loading And Unloading Of Each And Every Part!

- No Down Time**-machine continues to run, freeing operator to work other jobs.
- Self Adjusting & Self Releasing**-After initial setting, no adjustment required for different sizes, and needs only 1/4" of bar length to pull bar!
- 4 Fingers**-Holds round and square parts. Can also hold hex and flat parts with just 2 fingers.
- Pull Threaded or Delicate Material**-Simply use the optional soft steel, aluminum, brass or delrin fingers.
- Bar Can Be Pulled and Positioned Multiple Times** for machining various sections of the part before cutoff.
- Great for Sub-Spindle Lathes**-use as a "pick and place" device for finished parts.
- Quick Installation**- comes complete with fingers and bar support collar...be "up and running" within 1 hour!



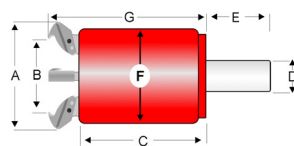
E

Description	Part Number	Price
VDI 30	BU-GA1000VDI-30	\$599.00
VDI 40	BU-GA1000VDI-40	\$599.00

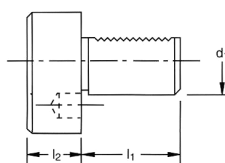
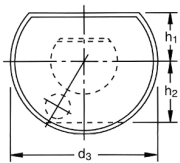
SBM Bar Pullers are shipped complete with 1 set of hard steel fingers and 1 bar support collar.

Clearance Dimensions

Size	A	B	C	D	E	F
Large Puller	3 5/8"	2 1/2"	2 7/8"	Shank	1 3/4"	2 3/4"
	4"	3 1/8"	2 7/8"	Shank	1 3/4"	2 3/4"

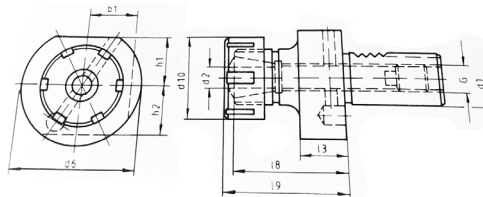


STEEL PLUG FORM Z2



Part Number	Price Each	d1	d2	h1	h2	L1	L2
V-Z23068SG	\$48.57	30	68	28	30	55	16
V-Z23068PG	\$48.57	30	68	28	30	55	16
V-Z24083SG	\$52.14	40	83	32.5	-	63	20
V-Z24083PG	\$52.14	40	83	32.5	-	63	20
V-Z25098SG	\$56.43	50	98	35	-	78	20
V-Z25098PG	\$56.43	50	98	35	-	78	20

COLLET CHUCKS- ER SERIES FORM E3



Part Number	Price Each	Collet Series	d1	d2 in	d2 mm	d6	d10	b1	L3	L8	L9	h1	h2	G
V-E33025-ER25G	\$303.45	ER25	30	1/32-5/8	1-16	68.0	42	30	22	63.0	75.0	28.0	30.0	5/8-18
V-E33032-ER32G	\$303.45	ER32	30	1/6-3/4	2-20	68.0	50	30	22	63.0	75.0	28.0	30.0	5/8-18
V-E33040-ER40G	\$303.45	ER40	30	3/32-1-1/32	3-25	68.0	63	30	22	61.0	75.0	28.0	30.0	5/8-18
V-E34025-ER25G	\$311.95	ER25	40	1/32-5/8	1-16	83.0	42	-	22	63.0	75.0	32.5	-	5/8-18
V-E34032-ER32G	\$311.95	ER32	40	1/16-3/4	2-20	83.0	50	-	22	63.0	75.0	32.5	-	5/8-18
V-E34040-ER40G	\$311.95	ER40	40	3/32-1-1/32	3-25	83.0	63	-	22	61.0	75.0	32.5	-	5/8-18

Call Us Or Visit Our Website For Our Complete Selection!

LATHE CHUCKS
LIVE CENTERS

VDI ACCESSORIES
VDI JAWS

STRAIGHT SHANK
COLLET HOLDERS

TAP HOLDERS
DRILL CHUCKS

CARBIDE INSERTS
THREADING/GROOVING

CUTTING TOOLS
MACHINERY

PRECISION TOOLS
DEBURRING

COOLANT/FLUIDS
TOOL STORAGE

VDI TOOLING

RADIAL OVERHEAD TURNING TOOLHOLDERS

SHORT STANDARD- FORMS B1 & B2

EVERMORE

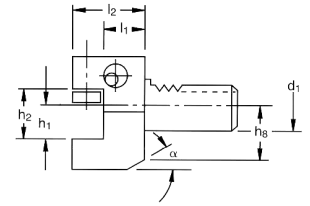
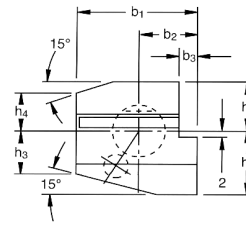


B

Form B1 (Right Hand)



Form B2 (Left Hand)



RIGHT HAND (FORM B1)	LEFT HAND (FORM B2)	Manufacturer	Type	Price Each	d1	b1	b2	b3	h1 in	h1 mm	h2	h3	h4	h5	h6	h8	L1	L2	∞
V-B13020-0750RV	V-B23020-0750LV	EVERMORE	Inch	\$131.57	30	70	35.0	10.0	3/4	-	29	26.0	22.0	28.0	38.0	30.0	22	40	25
V-B13020-20MRG	V-B23020-20MRG	USA	Metric	\$164.05	30	70	35.0	10.0	-	20	29	26.0	22.0	28.0	38.0	30.0	22	40	25
V-B13025-1000RG	V-B23025-1000RG	USA	Inch	\$147.05	30	70	35.0	10.0	1	-	34	28.0	26.0	32.0	48.0	43.0	22	47	25
V-B13025-25MRG	V-B23025-25MRG	USA	Metric	\$147.05	30	70	35.0	10.0	-	25	34	28.0	26.0	32.0	48.0	43.0	22	47	25
V-B14025-1000RV	V-B24025-1000LV	EVERMORE	Inch	\$149.50	40	85	42.5	12.5	1	-	34	35.0	30.0	32.5	48.0	42.0	22	47	30
V-B14025-25MRG	V-B24025-25MRG	USA	Metric	\$167.45	40	85	42.5	12.5	-	25	34	35.0	30.0	32.5	48.0	42.0	22	47	30
V-B15025-1000RG	V-B25025-1000RG	USA	Inch	\$211.65	50	100	50.0	16.0	1	-	34	42.0	35.0	35.0	60.0	-	30	55	-

RADIAL OVERHEAD TURNING TOOLHOLDERS

SHORT INVERTED- FORMS B3 & B4

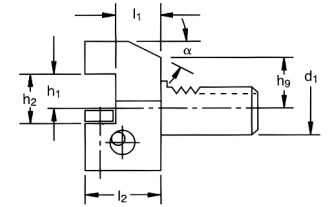
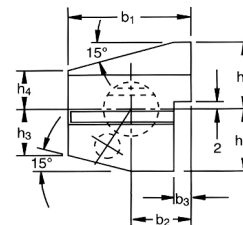
EVERMORE



Form B3 (Right Hand)



Form B4 (Left Hand)



RIGHT HAND FORM B3	LEFT HAND FORM B4	Manufacturer	Type	Price Each	d1	b1	b2	b3	h1 in	h1 mm	h2	h3	h4	h6	h7	h8	L1	L2	∞
V-B33020-0750RV	V-B43020-0750LV	EVERMORE	Inch	\$131.57	30	70	35.0	10.0	3/4	-	29	26.0	22.0	38.0	35.0	28.0	22	40	25
V-B33020-20MRG	V-B43020-20MRG	USA	Metric	\$183.60	30	70	35.0	10.0	-	20	29	26.0	22.0	38.0	35.0	28.0	22	40	25
V-B33025-1000RV	V-B43025-1000LV	EVERMORE	Inch	\$197.36	30	70	35.0	10.0	1	-	34	26.0	28.0	48.0	31.0	38.0	22	47	25
V-B33025-25MRG	V-B43025-25MRG	USA	Metric	\$175.10	30	70	35.0	10.0	-	25	34	26.0	28.0	48.0	31.0	38.0	22	47	25
V-B34025-1000RV	V-B44025-1000LV	EVERMORE	Inch	\$149.50	40	85	42.5	12.5	1	-	34	35.0	30.0	48.0	42.5	32.5	22	47	30
V-B34025-25MRG	V-B44025-25MRG	USA	Metric	\$201.45	40	85	42.5	12.5	-	25	34	35.0	30.0	48.0	42.5	32.5	22	47	30

RADIAL OVERHEAD TURNING TOOLHOLDERS

LONG- FORMS B5 & B6

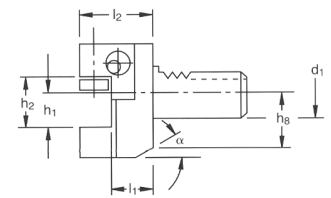
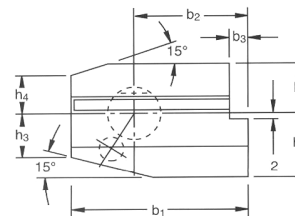
EVERMORE



Form B5 (Right Hand)



Form B6 (Left Hand)



RIGHT HAND FORM B5	LEFT HAND FORM B6	Manufacturer	Type	Price Each	d1	b1	b2	b3	h1 in	h1 mm	h2	h3	h4	h5	h6	h8	L1	L2	∞
V-B53020-0750RV	V-B63020-0750LV	EVERMORE	Inch	\$131.57	30	100	65.0	10.0	3/4	-	29	26.0	22.0	28.0	38.0	30.0	22	40	25
V-B53020-20MRG	V-B63020-20MRG	USA	Metric	\$247.35	30	100	65.0	10.0	-	20	29	26.0	22.0	28.0	38.0	30.0	22	40	25
V-B53025-1000RG	V-B63025-1000RG	USA	Inch	\$238.00	30	100	65.0	10.0	1	-	35	33.0	22.0	28.0	45.0	40.0	22	47	25
V-B53025-25MRG	V-B63025-25MRG	USA	Metric	\$238.00	30	100	65.0	10.0	-	25	35	33.0	22.0	28.0	45.0	40.0	22	47	25
V-B54025-1000RV	V-B64025-1000LV	EVERMORE	Inch	\$239.21	40	118	75.5	12.5	1	-	34	35.0	30.0	32.5	48.0	42.0	22	47	30
V-B54025-25MRG	V-B64025-25MRG	USA	Metric	\$257.55	40	118	75.5	12.5	-	25	34	35.0	30.0	32.5	48.0	42.0	22	47	30

Many More Sizes & Styles Available! Please Call For More Information!

Call Us Today For All Of Your Machine Tool Needs!

RADIAL OVERHEAD TURNING TOOLHOLDERS

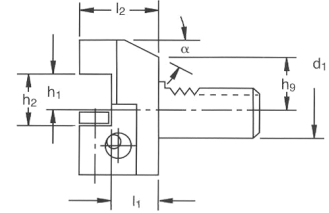
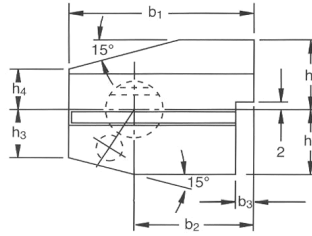
LONG INVERTED- FORMS B7 & B8

EVERMORE



Form B7 (Right Hand)

Form B8 (Left Hand)



RIGHT HAND FORM B7	LEFT HAND FORM B8	Manufacturer	Type	Price Each	d1	b1	b2	b3	h1 in	h1 mm	h2	h3	h4	h6	h7	h9	L1	L2	a
V-B73020-0750RV	V-B83020-0750LV	EVERMORE	Inch	\$209.31	30	100	65.0	10.0	3/4	-	29.0	26.0	22.0	38.0	35.0	28.0	22	40	25
V-B73020-20MRG	V-B83020-20MRG	USA	Metric	\$249.90	30	100	65.0	10.0	-	20	29.0	26.0	22.0	38.0	35.0	28.0	22	40	25
V-B73025-1000RG	V-B83025-1000RG	USA	Inch	\$243.10	30	100	65.0	10.0	1	-	34.0	26.0	28.0	44.0	35.0	40.0	22	47	25
V-B73025-25MRG	V-B83025-25MRG	USA	Metric	\$243.10	30	100	65.0	10.0	-	25	34.0	26.0	28.0	44.0	35.0	40.0	22	47	25
V-B74025-1000RV	V-B84025-1000LV	EVERMORE	Inch	\$239.21	40	118	75.5	12.5	1	-	34.0	35.0	30.0	48.0	42.5	32.5	30	44	30
V-B74025-25MRG	V-B84025-25MRG	USA	Metric	\$266.90	40	118	75.5	12.5	-	25	34.0	35.0	30.0	48.0	42.5	32.5	30	44	30

SQUARE FACING/TURNING AXIAL TOOLHOLDERS

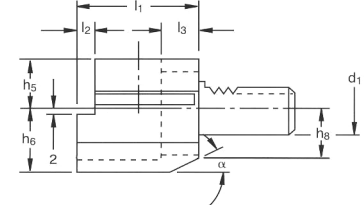
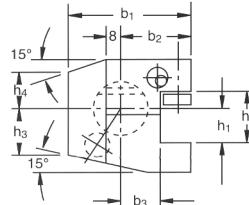
INVERTED- FORMS C1 & C2

EVERMORE



Form C1 (Right Hand)

Form C2 (Left Hand)



RIGHT HAND FORM C1	LEFT HAND FORM C2	Manufacturer	Type	Price Each	d1	b1	b2	b3	h1 in	h1 mm	h2	h3	h4	h5	h6	h8	L1	L2	L3	a
V-C13020-0750RV	V-C23020-0750LV	EVERMORE	Inch	\$167.45	30	70	35.0	17.0	3/4	-	29	26.0	22.0	28.0	38.0	30.0	70	10	30	25
V-C13020-20MRG	V-C23020-20MRG	USA	Metric	\$207.40	30	70	35.0	17.0	-	20	29	26.0	22.0	28.0	38.0	30.0	70	10	30	25
V-C13025-1000RG	-	USA	Inch	\$207.40	30	77	42.0	17.0	1	-	34	32.0	22.0	25.0	48.0	40.0	70	10	30	25
V-C13025-25MRG	-	USA	Metric	\$207.40	30	77	42.0	17.0	-	25	34	32.0	22.0	25.0	48.0	40.0	70	10	30	25
V-C14025-1000RV	V-C24025-1000LV	EVERMORE	Inch	\$197.36	40	85	42.5	20.5	1	-	34	35.0	30.0	32.5	48.0	42.0	85	12.5	30	30
V-C14025-25MRG	V-C24025-25MRG	USA	Metric	\$232.90	40	85	42.5	20.5	-	25	34	35.0	30.0	32.5	48.0	42.0	85	12.5	30	30

SQUARE FACING/TURNING AXIAL TOOLHOLDERS

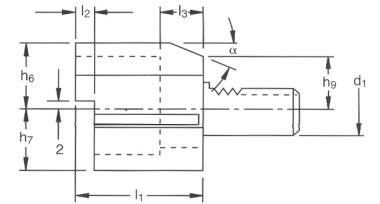
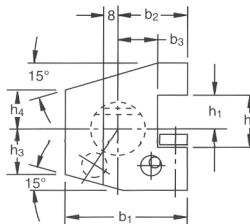
INVERTED- FORMS C3 & C4

EVERMORE



Form C3 (Right Hand)

Form C4 (Left Hand)



RIGHT HAND FORM C3	LEFT HAND FORM C4	Manufacturer	Type	Price Each	d1	b1	b2	b3	h1 in	h1 mm	h2	h3	h4	h6	h7	h9	L1	L2	L3	a
V-C33020-0750RV	V-C43020-0750LV	EVERMORE	Inch	\$167.45	30	70	35.0	17.0	3/4	-	29	26.0	22.0	38.0	35.0	28.0	70	10	30	25
V-C33020-20MRG	V-C43020-20MRG	USA	Metric	\$218.45	30	70	35.0	17.0	-	20	29	26.0	22.0	38.0	35.0	28.0	70	10	30	25
V-C34025-1000RV	V-C44025-1000LV	EVERMORE	Inch	\$197.36	40	85	42.5	20.5	1	-	34	35.0	30.0	48.0	42.5	42.0	85	12.5	30	30
V-C34025-25MRG	V-C44025-25MRG	USA	Metric	\$244.80	40	85	42.5	20.5	-	25	34	35.0	30.0	48.0	42.5	42.0	85	12.5	30	30

Call Us Or Visit Our Website For Our Complete Selection!

LATHE CHUCKS
LIVE CENTERS

WISE JAWS
WISE ACCESSORIES

STRAIGHT SHANK
COLLET HOLDERS

TAP HOLDERS
DRILL CHUCKS

CARBIDE INSERTS
THREADING/GROOVING

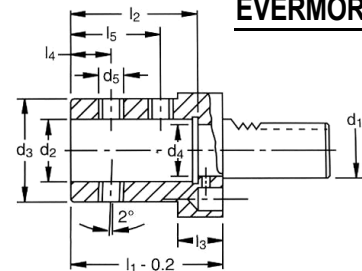
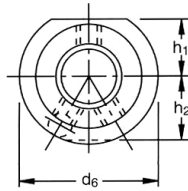
CUTTING TOOLS
MACHINERY

PRECISION TOOLS
DEBURRING

COOLANT/FLUIDS
TOOL STORAGE

VDI TOOLING

BORING BAR INTERNAL COOLANT FORM E1

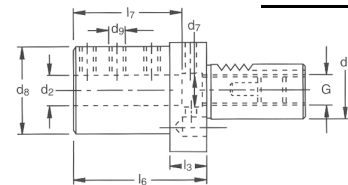
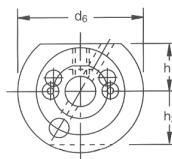


EVERMORE



Form E1 Part Number	Manufacturer	Type	Price Each	D1	D2 in.	D2 mm	D3	D4	D5	D6	H1	H2	L1	L2	L3	L4	L5
V-E13008-031G	USA	Inch	\$147.05	30	5/16	-	46.0	6	1/4-20	68	28.0	30.0	67.0	54.0	22.0	15	34
V-E13012-050G	USA	Inch	\$147.05	30	1/2	-	46.0	10	1/4-20	68	28.0	30.0	67.0	54.0	22.0	15	34
V-E13012-12MG	USA	Metric	\$147.05	30	-	12.0	46.0	10	1/4-20	68	28.0	30.0	67.0	54.0	22.0	15	34
V-E13016-062G	USA	Inch	\$147.05	30	5/8	-	46.0	12	3/8-16	68	28.0	30.0	67.0	54.0	22.0	15	35
V-E13016-16MG	USA	Metric	\$147.05	30	-	16.0	46.0	12	3/8-16	68	28.0	30.0	67.0	54.0	22.0	15	35
V-E13020-075RV	EVERMORE	Inch	\$107.65	30	3/4	-	50.0	12	3/8-16	68	28.0	30.0	67.0	54.0	22.0	15	35
V-E13020-20MG	USA	Metric	\$147.05	30	-	20.0	50.0	12	3/8-16	68	28.0	30.0	67.0	54.0	22.0	15	35
V-E13025-100RV	EVERMORE	Inch	\$107.65	30	1	-	55.0	17	3/8-16	68	28.0	30.0	71.0	59.0	22.0	17	40
V-E13025-25MG	USA	Metric	\$147.05	30	-	25.0	55.0	17	3/8-16	68	28.0	30.0	71.0	59.0	22.0	17	40
V-E13032-125RV	EVERMORE	Inch	\$107.65	30	1-1/4	-	62.0	24	3/8-16	68	28.0	30.0	75.0	63.0	22.0	20	44
V-E13032-32MG	USA	Metric	\$162.35	30	-	32.0	62.0	24	3/8-16	68	28.0	30.0	75.0	63.0	22.0	20	44
V-E13040-150G	USA	Inch	\$162.35	30	1-1/2	-	66.0	32	5/8-11	68	28.0	30.0	90.0	73.0	22.0	22	50
V-E13040-40MG	USA	Metric	\$162.35	30	-	40.0	66.0	32	5/8-11	68	28.0	30.0	90.0	73.0	22.0	22	50
V-E14016-062RV	EVERMORE	Inch	\$137.55	40	5/8	-	54.0	12	3/8-16	83	32.5	-	67.0	54.0	22.0	15	35
V-E14016-16MG	USA	Metric	\$186.15	40	-	16.0	54.0	12	3/8-16	83	32.5	-	67.0	54.0	22.0	15	35
V-E14020-075RV	EVERMORE	Inch	\$137.55	40	3/4	-	54.0	12	3/8-16	83	32.5	-	67.0	54.0	22.0	15	35
V-E14020-20MG	USA	Metric	\$186.15	40	-	20.0	54.0	12	3/8-16	83	32.5	-	67.0	54.0	22.0	15	35
V-E14025-100RV	EVERMORE	Inch	\$137.55	40	1	-	63.0	17	3/8-16	83	32.5	-	75.0	59.0	22.0	17	40
V-E14025-25MG	USA	Metric	\$186.15	40	-	25.0	63.0	17	3/8-16	83	32.5	-	75.0	59.0	22.0	17	40
V-E14032-125RV	EVERMORE	Inch	\$137.55	40	1-1/4	-	69.0	24	3/8-16	83	32.5	-	75.0	63.0	22.0	20	44
V-E14032-32MG	USA	Metric	\$194.65	40	-	32.0	69.0	24	3/8-16	83	32.5	-	75.0	63.0	22.0	20	44
V-E14040-150G	USA	Inch	\$194.65	40	1-1/2	-	76.0	32	5/8-11	83	32.5	-	90.0	73.0	22.0	22	54
V-E14040-40MG	USA	Metric	\$194.65	40	-	40.0	76.0	32	5/8-11	83	32.5	-	90.0	73.0	22.0	22	54
V-E14045-175G	USA	Inch	\$194.65	40	1-3/4	-	83.0	40	5/8-11	83	32.0	-	100.0	83.0	-	24	60
V-E14050-200G	USA	Inch	\$194.65	40	2	-	81.0	32	5/8-11	83	32.5	-	100.0	83.0	22.0	24	60
V-E15020-075G	USA	Inch	\$266.90	50	3/4	-	57.0	12	3/8-16	98	35.0	-	67.0	54.0	30.0	15	35
V-E15040-150G	USA	Inch	\$266.90	50	1-1/2	-	76.0	32	5/8-11	98	35.0	-	100.0	73.0	30.0	22	54

BORING BAR DUAL EXTERNAL COOLANT FORM E2-INCH



EVERMORE



Form E2 Part Number	Manufacturer	Price Each	D1	D2 in.	D6	D7	D8	D9	H1	H2	L3	L6	L7	G
V-E23006-025G	USA	\$155.55	30	1/4	68.0	14	55	10-32	28.0	30.0	22.0	60.0	51.0	5/8-18
V-E23008-031G	USA	\$155.55	30	5/16	68.0	16-1/2	55	1/4-20	28.0	30.0	22.0	60.0	51.0	5/8-11
V-E23010-037G	USA	\$155.55	30	3/8	68.0	16-1/2	55	1/4-20	28.0	30.0	22.0	60.0	51.0	5/8-11
V-E23012-050G	USA	\$155.55	30	1/2	68.0	16-1/2	55	1/4-20	28.0	30.0	22.0	60.0	51.0	5/8-11
V-E23016-062RV	EVERMORE	\$107.65	30	5/8	68.0	16-1/2	55	1/4-20	28.0	30.0	22.0	60.0	51.0	5/8-11
V-E23020-075RV	EVERMORE	\$107.65	30	3/4	68.0	16-1/2	55	1/4-20	28.0	30.0	22.0	60.0	51.0	5/8-11
V-E23025-100RV	EVERMORE	\$107.65	30	1	68.0	16-1/2	55	1/4-20	28.0	30.0	22.0	60.0	51.0	5/8-11
V-E23032-125RV	EVERMORE	\$107.65	30	1-1/4	68.0	16-1/2	68	3/8-16	28.0	30.0	22.0	75.0	61.0	5/8-11
V-E23040-150G	USA	\$194.65	30	1-1/2	83.0	41	74	1/2-13	32.0	30.0	22.0	90.0	74.0	5/8-18
V-E24008-031G	USA	\$194.65	40	5/16	83.0	20-1/2	55	1/4-20	32.5	-	22.0	75.0	61.0	5/8-11
V-E24010-037G	USA	\$194.65	40	3/8	83.0	20-1/2	55	1/4-20	32.5	-	22.0	75.0	61.0	5/8-11
V-E24012-050G	USA	\$194.65	40	1/2	83.0	20-1/2	55	3/8-16	32.5	-	22.0	75.0	61.0	5/8-11
V-E24016-062G	USA	\$194.65	40	5/8	83.0	20-1/2	55	3/8-16	32.5	-	22.0	75.0	61.0	5/8-11
V-E24020-075G	USA	\$194.65	40	3/4	83.0	20-1/2	55	3/8-16	32.5	-	22.0	75.0	61.0	5/8-11
V-E24025-100G	USA	\$194.65	40	1	83.0	20-1/2	55	1/2-13	32.5	-	22.0	75.0	61.0	5/8-11
V-E24032-125G	USA	\$203.15	40	1-1/4	83.0	20-1/2	83	1/2-13	32.5	-	22.0	75.0	61.0	5/8-11

Call Us Today For All Of Your Machine Tool Needs!