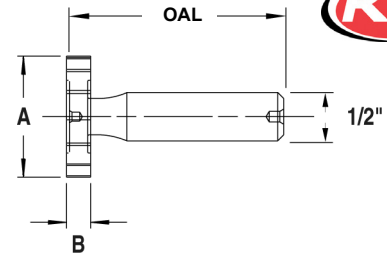


KEYSEAT CUTTERS

WOODRUFF KEYSEAT CUTTERS

Shank Type- HSS & M35 Cobalt

KEO woodruff keyseat cutters are extremely versatile profile milling cutters. Although originally designed to mill standard woodruff keyseat, they satisfy a variety of applications from milling slots to milling threads. Available in straight and stagger tooth models.



1/2" Straight Shank

Amer. Std. #	Head Dia.	Face Width	OAL	HSS				COBALT				Number of Teeth	
				Straight Tooth Part Number	Price Each	Stagger Tooth Part Number	Price Each	Straight Tooth Part Number	Price Each	Stagger Tooth Part Number	Price Each	Straight	Stagger
202	1/4	1/16	2-1/16	KEO-62010	\$26.30	KEO-62015	\$34.32	KEO-93932	\$31.95	KEO-93933	\$39.72	8	6
2021/2	5/16	1/16	2-1/16	KEO-62020	\$26.30	KEO-62025	\$34.32	KEO-93938	\$31.95	KEO-93939	\$39.72	8	6
3021/2	5/16	3/32	2-3/32	KEO-63020	\$26.30	KEO-63025	\$34.32	KEO-93944	\$31.95	KEO-93945	\$39.72	8	6
203	3/8	1/16	2-1/16	KEO-62030	\$26.30	KEO-62035	\$34.32	KEO-93950	\$31.95	KEO-93951	\$39.72	8	6
303	3/8	3/32	2-3/32	KEO-63030	\$26.30	KEO-63035	\$34.32	KEO-93956	\$31.95	KEO-93957	\$39.72	8	6
403	3/8	1/8	2-1/8	KEO-64030	\$26.30	KEO-64035	\$34.32	KEO-93962	\$31.95	KEO-93963	\$39.72	8	6
204	1/2	1/16	2-1/16	KEO-62040	\$26.30	KEO-62045	\$34.32	KEO-93968	\$31.95	KEO-93969	\$39.72	10	8
304	1/2	3/32	2-3/32	KEO-63040	\$26.30	KEO-63045	\$34.32	KEO-93974	\$31.95	KEO-93975	\$39.72	10	8
404	1/2	1/8	2-1/8	KEO-64040	\$26.30	KEO-64045	\$34.32	KEO-93986	\$31.95	KEO-93987	\$40.01	10	8
305	5/8	3/32	2-3/32	KEO-63050	\$26.56	KEO-63055	\$34.56	KEO-93980	\$32.28	KEO-93981	\$40.01	10	8
405	5/8	1/8	2-1/8	KEO-64050	\$26.56	KEO-64055	\$34.56	KEO-93992	\$32.28	KEO-93993	\$40.01	10	8
505	5/8	5/32	2-5/32	KEO-65050	\$26.56	KEO-65055	\$34.56	KEO-94004	\$32.28	KEO-94005	\$40.01	10	8
605	5/8	3/16	2-3/16	KEO-66050	\$26.56	KEO-66055	\$34.56	KEO-94010	\$32.28	KEO-94011	\$40.01	10	8
406	3/4	1/8	2-1/8	KEO-64060	\$27.83	KEO-64065	\$35.67	KEO-93998	\$33.82	KEO-93999	\$41.37	10	8
506	3/4	5/32	2-5/32	KEO-65060	\$27.83	KEO-65065	\$35.67	KEO-94016	\$33.82	KEO-94017	\$41.37	10	8
606	3/4	3/16	2-3/16	KEO-66060	\$27.83	KEO-66065	\$35.67	KEO-94034	\$33.82	KEO-94035	\$41.37	10	8
806	3/4	1/4	2-1/4	KEO-68060	\$27.83	KEO-68065	\$35.67	KEO-94022	\$33.82	KEO-94023	\$41.37	10	8
507	7/8	5/32	2-5/32	KEO-65070	\$30.36	KEO-65075	\$39.05	KEO-94028	\$36.90	KEO-94029	\$45.28	12	10
607	7/8	3/16	2-3/16	KEO-66070	\$30.36	KEO-66075	\$39.05	KEO-94040	\$36.90	KEO-94041	\$45.28	12	10
707	7/8	7/32	2-7/32	KEO-67070	\$30.91	KEO-67075	\$39.05	KEO-94046	\$37.59	KEO-94047	\$45.41	12	10
807	7/8	1/4	2-1/4	KEO-68070	\$30.91	KEO-68075	\$39.05	KEO-94076	\$37.59	KEO-94077	\$41.49	12	10
608	1	3/16	2-3/16	KEO-66080	\$33.24	KEO-66085	\$43.67	KEO-94052	\$40.40	KEO-94053	\$50.48	12	10
708	1	7/32	2-7/32	KEO-67080	\$33.54	KEO-67085	\$43.97	KEO-94058	\$40.78	KEO-94059	\$50.85	12	10
808	1	1/4	2-1/4	KEO-68080	\$33.54	KEO-68085	\$43.97	KEO-94082	\$40.78	KEO-94083	\$50.85	12	10
1008	1	5/16	2-5/16	KEO-60080	\$34.47	KEO-60085	\$44.60	KEO-94130	\$41.89	KEO-94131	\$51.68	12	10
1208	1	3/8	2-3/8	KEO-62080	\$34.47	KEO-62085	\$44.60	KEO-94064	\$41.89	KEO-94065	\$51.68	12	10
609	1-1/8	3/16	2-3/16	KEO-66090	\$37.36	KEO-66095	\$50.59	KEO-94070	\$45.41	KEO-94071	\$58.24	12	10
709	1-1/8	7/32	2-7/32	KEO-67090	\$37.36	KEO-67095	\$50.59	KEO-94088	\$45.41	KEO-94089	\$58.24	12	10
809	1-1/8	1/4	2-1/4	KEO-68090	\$38.07	KEO-68095	\$50.59	KEO-94094	\$46.27	KEO-94095	\$58.40	12	10
1009	1-1/8	5/16	2-5/16	KEO-60090	\$39.93	KEO-60095	\$51.49	KEO-94136	\$48.53	KEO-94137	\$59.69	12	10
610	1-1/4	3/16	2-3/16	KEO-66100	\$41.70	KEO-66105	\$52.60	KEO-94100	\$50.68	KEO-94101	\$61.19	14	12
710	1-1/4	7/32	2-7/32	KEO-67100	\$41.70	KEO-67105	\$52.60	KEO-94106	\$50.68	KEO-94107	\$61.19	14	12
810	1-1/4	1/4	2-1/4	KEO-68100	\$43.08	KEO-68105	\$55.55	KEO-94112	\$52.36	KEO-94113	\$64.40	14	12
1010	1-1/4	5/16	2-5/16	KEO-60010	\$44.81	KEO-60015	\$56.94	KEO-94142	\$54.47	KEO-94143	\$66.13	14	12
1210	1-1/4	3/8	2-3/8	KEO-62100	\$44.81	KEO-62105	\$56.94	KEO-94160	\$54.47	KEO-94161	\$66.13	14	12
811	1-3/8	1/4	2-1/4	KEO-68110	\$48.29	KEO-68115	\$61.86	KEO-94118	\$58.70	KEO-94119	\$71.79	14	12
1011	1-3/8	5/16	2-5/16	KEO-60110	\$48.29	KEO-60115	\$61.86	KEO-94148	\$58.70	KEO-94149	\$71.79	14	12
1211	1-3/8	3/8	2-3/8	KEO-62110	\$49.16	KEO-62115	\$62.70	KEO-94166	\$59.74	KEO-94167	\$72.80	14	12
812	1-1/2	1/4	2-1/4	KEO-68120	\$49.98	KEO-68125	\$66.14	KEO-94124	\$60.76	KEO-94125	\$76.41	16	14
1012	1-1/2	5/16	2-5/16	KEO-60120	\$51.73	KEO-60125	\$66.14	KEO-94154	\$62.88	KEO-94155	\$76.77	16	14
1212	1-1/2	3/8	2-3/8	KEO-62120	\$53.45	KEO-62125	\$69.67	KEO-94172	\$64.96	KEO-94173	\$80.64	16	14

WOODRUFF KEYSEAT CUTTER SETS

Shank Type- HSS & M35 Cobalt



Teeth Type	# of Pieces	Includes	Part Number	Price
Straight	10	43,204,404,305,505,406,	KEO-60100	\$308.96
Staggered	10	606,806,608,808	KEO-60105	\$397.05
Straight	41	1 Each of All American	KEO-60000	\$1,517.85
Staggered	41	Std Sizes	KEO-60005	\$1,950.36

Call Us Today For All Of Your Machine Tool Needs!

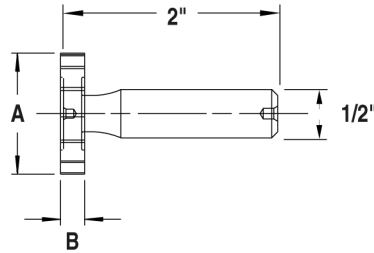
KEYSEAT CUTTERS-HSS, COBALT & CARBIDE

B

WOODRUFF NARROW WIDTH KEYSEAT CUTTERS

Shank Type- HSS & M35 Cobalt

- Fractional widths
- 1/2" diameter straight shank
- 2" overall length
- Right hand cut
- Made in the USA



LATHE CHUCKS
LIVE CENTERS

VICE JAWS
VICE ACCESSORIES

STRAIGHT SHANK
COLLET HOLDERS

TAP HOLDERS
DRILL CHUCKS

CARBIDE INSERTS
THREADING/GROOVING

CUTTING TOOLS
MACHINERY

PRECISION TOOLS
DEBURRING

COOLANT/FLUIDS
TOOL STORAGE

Dia. A	Head Wid. B	Part Number	Price Each
1/4	1/64	KEO-68981	\$69.33
1/4	0.020	KEO-68978	\$49.87
1/4	1/32	KEO-68982	\$36.79
1/4	3/64	KEO-68983	\$49.87
5/16	1/64	KEO-68984	\$69.80
5/16	0.020	KEO-68979	\$50.33
5/16	1/32	KEO-68985	\$37.06
5/16	3/64	KEO-68986	\$50.33
3/8	1/64	KEO-68987	\$68.64
3/8	0.020	KEO-68980	\$49.82
3/8	1/32	KEO-68988	\$36.47
3/8	3/64	KEO-68989	\$49.82
1/2	1/64	KEO-68990	\$69.78
1/2	0.020	KEO-68991	\$62.87
1/2	1/32	KEO-69000	\$33.75
1/2	3/64	KEO-69001	\$62.87
5/8	0.020	KEO-69009	\$63.47
5/8	1/32	KEO-69010	\$34.07
5/8	3/64	KEO-69011	\$63.47
5/8	1/16	KEO-69020	\$34.07
5/8	5/64	KEO-69021	\$63.47
3/4	1/32	KEO-69030	\$35.71

Dia. A	Head Wid. B	Part Number	Price Each
3/4	3/64	KEO-69031	\$67.23
3/4	1/16	KEO-69040	\$35.71
3/4	5/64	KEO-69041	\$67.23
3/4	3/32	KEO-69050	\$35.71
3/4	7/64	KEO-69051	\$67.23
7/8	1/32	KEO-69060	\$39.40
7/8	3/64	KEO-69061	\$75.12
7/8	1/16	KEO-69070	\$39.40
7/8	5/64	KEO-69071	\$75.12
7/8	3/32	KEO-69080	\$39.40
7/8	7/64	KEO-69081	\$75.12
7/8	1/8	KEO-69090	\$39.40
7/8	9/64	KEO-69091	\$75.12
1	1/32	KEO-69098	\$83.46
1	3/64	KEO-69099	\$83.06
1	1/16	KEO-69100	\$43.07
1	5/64	KEO-69101	\$83.06
1	3/32	KEO-69110	\$43.07
1	7/64	KEO-69111	\$83.06
1	1/8	KEO-69120	\$43.07
1	9/64	KEO-69121	\$83.06
1	5/32	KEO-69130	\$43.07

Dia. A	Head Wid. B	Part Number	Price Each
1	11/64	KEO-69131	\$83.06
1-1/8	3/64	KEO-69139	\$90.34
1-1/8	1/16	KEO-69140	\$51.25
1-1/8	5/64	KEO-69141	\$90.34
1-1/8	3/32	KEO-69150	\$51.25
1-1/8	7/64	KEO-69151	\$90.34
1-1/8	1/8	KEO-69160	\$51.25
1-1/8	9/64	KEO-69161	\$90.34
1-1/8	5/32	KEO-69170	\$51.25
1-1/8	11/64	KEO-69171	\$90.34
1-1/4	3/64	KEO-69179	\$97.14
1-1/4	1/16	KEO-69180	\$57.52
1-1/4	5/64	KEO-69181	\$97.14
1-1/4	3/32	KEO-69190	\$57.52
1-1/4	7/64	KEO-69191	\$97.14
1-1/4	1/8	KEO-69200	\$57.52
1-1/4	9/64	KEO-69201	\$97.14
1-1/4	5/32	KEO-69210	\$57.52
1-1/4	11/64	KEO-69211	\$97.14
1-3/8	3/64	KEO-69219	\$106.65
1-3/8	1/16	KEO-69220	\$62.88
1-3/8	5/64	KEO-69221	\$106.65

Dia. A	Head Wid. B	Part Number	Price Each
1-3/8	3/32	KEO-69230	\$62.88
1-3/8	7/64	KEO-69231	\$106.65
1-3/8	1/8	KEO-69240	\$62.88
1-3/8	9/64	KEO-69241	\$106.65
1-3/8	5/32	KEO-69250	\$62.88
1-3/8	11/64	KEO-69251	\$106.65
1-3/8	3/16	KEO-69260	\$62.88
1-3/8	13/64	KEO-69261	\$106.65
1-3/8	7/32	KEO-69270	\$62.88
1-1/2	3/64	KEO-69279	\$113.33
1-1/2	1/16	KEO-69280	\$69.18
1-1/2	5/64	KEO-69281	\$113.33
1-1/2	3/32	KEO-69290	\$69.18
1-1/2	7/64	KEO-69291	\$113.33
1-1/2	1/8	KEO-69300	\$69.18
1-1/2	9/64	KEO-69301	\$113.33
1-1/2	5/32	KEO-69310	\$65.88
1-1/2	11/64	KEO-69311	\$107.91
1-1/2	3/16	KEO-69320	\$65.88
1-1/2	13/64	KEO-69321	\$107.91
1-1/2	7/32	KEO-69330	\$65.88
1-1/2	15/64	KEO-69331	\$107.91

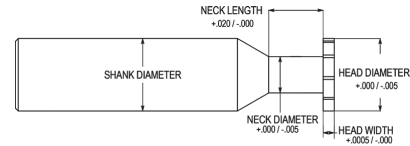
SOLID CARBIDE KEY CUTTERS

Solid Micrograin Carbide

- Solid micrograin carbide
- For small mills or live tooling
- Additional diameters and widths available-please call for more information



INTERNAL TOOL



Dia	Width	Neck Length	Neck Dia	Flutes	Shank Dia	OAL	Part Number	Price Each
0.125	0.031	0.125	0.060	6	0.125	2.00	IT-76-0910	\$33.13
0.125	0.047	0.125	0.060	6	0.125	2.00	IT-76-0920	\$33.13
0.125	0.063	0.125	0.060	6	0.125	2.00	IT-76-0926	\$33.13
0.125	0.078	0.125	0.060	6	0.125	2.00	IT-76-0928	\$33.13
0.125	0.094	0.125	0.060	6	0.125	2.00	IT-76-0930	\$33.13
0.156	0.031	0.187	0.078	6	0.187	2.50	IT-76-0955	\$33.38
0.156	0.047	0.187	0.078	6	0.187	2.50	IT-76-0960	\$33.38
0.156	0.063	0.187	0.078	6	0.187	2.50	IT-76-0962	\$33.38
0.156	0.078	0.187	0.078	6	0.187	2.50	IT-76-0963	\$33.38
0.156	0.094	0.187	0.078	6	0.187	2.50	IT-76-0964	\$33.38
0.187	0.031	0.187	0.094	6	0.187	2.50	IT-76-1055	\$33.47
0.187	0.047	0.187	0.094	6	0.187	2.50	IT-76-1060	\$33.47
0.187	0.050	0.187	0.094	6	0.187	2.50	IT-76-1062	\$33.47
0.187	0.063	0.187	0.094	6	0.187	2.50	IT-76-1065	\$33.47
0.187	0.078	0.187	0.094	6	0.187	2.50	IT-76-1067	\$33.47
0.187	0.079	0.187	0.094	6	0.187	2.50	IT-76-1068	\$33.47
0.187	0.093	0.187	0.094	6	0.187	2.50	IT-76-1069	\$33.47
0.187	0.125	0.187	0.094	6	0.187	2.50	IT-76-1075	\$33.47
0.250	0.031	0.250	0.125	6	0.250	2.50	IT-76-1135	\$36.84
0.250	0.039	0.250	0.125	6	0.250	2.50	IT-76-1147	\$36.84
0.250	0.047	0.250	0.125	6	0.250	2.50	IT-76-1151	\$36.84
0.250	0.063	0.250	0.125	6	0.250	2.50	IT-76-1155	\$36.84
0.250	0.078	0.250	0.125	6	0.250	2.50	IT-76-1157	\$36.84
0.250	0.094	0.250	0.125	6	0.250	2.50	IT-76-1159	\$36.84

Dia	Width	Neck Length	Neck Dia	Flutes	Shank Dia	OAL	Part Number	Price Each
0.312	0.031	0.312	0.150	8	0.312	2.50	IT-76-1170	\$48.00
0.312	0.047	0.312	0.150	8	0.312	2.50	IT-76-1175	\$48.00
0.312	0.063	0.312	0.150	8	0.312	2.50	IT-76-1180	\$48.00
0.312	0.094	0.312	0.150	8	0.312	2.50	IT-76-1185	\$48.00
0.312	0.125	0.312	0.150	8	0.312	2.50	IT-76-1190	\$48.00
0.312	0.156	0.312	0.150	8	0.312	2.50	IT-76-1195	\$48.00
0.375	0.031	0.375	0.200	8	0.375	2.50	IT-76-1200	\$55.66
0.375	0.047	0.375	0.200	8	0.375	2.50	IT-76-1205	\$55.66
0.375	0.063	0.375	0.200	8	0.375	2.50	IT-76-1210	\$55.66
0.375	0.078	0.375	0.200	8	0.375	2.50	IT-76-1212	\$55.66
0.375	0.094	0.375	0.200	8	0.375	2.50	IT-76-1215	\$55.66
0.375	0.125	0.375	0.200	8	0.375	2.50	IT-76-1220	\$55.66
0.375	0.156	0.375	0.200	8	0.375	2.50	IT-76-1225	\$55.66
0.375	0.188	0.375	0.200	8	0.375	2.50	IT-76-1230	\$55.66
0.500	0.031	0.375	0.250	10	0.500	3.00	IT-76-1235	\$57.02
0.500	0.063	0.375	0.250	10	0.500	3.00	IT-76-1245	\$57.02
0.500	0.094	0.375	0.250	10	0.500	3.00	IT-76-1250	\$57.02
0.500	0.125	0.375	0.250	10	0.500	3.00	IT-76-1255	\$57.02
0.500	0.156	0.375	0.250	10	0.500	3.00	IT-76-1260	\$57.02
0.500	0.188	0.375	0.250	10	0.500	3.00	IT-76-1265	\$57.02
0.500	0.234	0.375	0.250	10	0.500	3.00	IT-76-1268	\$57.02
0.500	0.236	0.375	0.250	10	0.500	3.00	IT-76-1269	\$57.02
0.500	0.250	0.375	0.250	10	0.500	3.00	IT-76-1270	\$57.02
0.625	0.125	0.500	0.300	10	0.625	3.50	IT-76-1300	\$117.23

Call Us Or Visit Our Website For Our Complete Selection!

2019-20 MASTER CATALOG

367