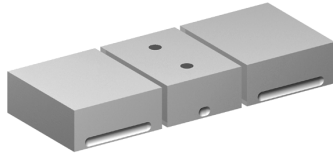


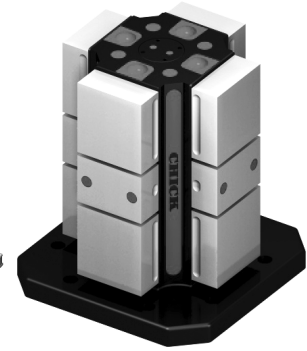
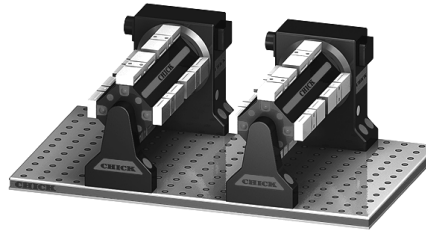
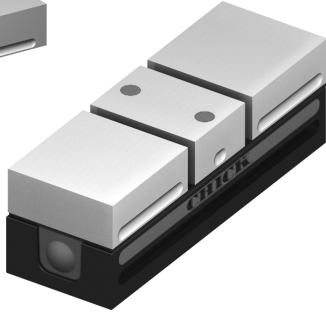
CHICK WORKHOLDING SYSTEMS
Efficiency Through Workholding Innovation

- Replacement Jaws, Faceplates & Accessories
- Qwik-Lok Dual Station
- One-Lok™ Vises
- Indexer Subsystems
- Workholding Packages

AUTHORIZED DISTRIBUTOR
California, Arizona & Nevada
Call Us For All Of Your
CHICK Workholding Needs!



Please Call For More Information!



LATHE CHUCKS
LIVE CENTERS

VISE JAWS
VISE ACCESSORIES

STRAIGHT SHANK
COLLET HOLDERS

TAP HOLDERS
DRILL CHUCKS

CARBIDE INSERTS
THREADING/GROOVING

CUTTING TOOLS
MACHINERY

PRECISION TOOLS
DEBURRING

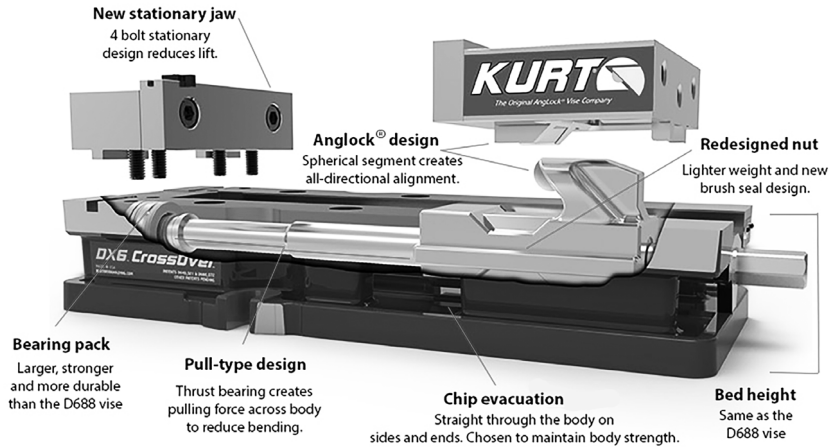
COOLANT/FLUIDS
TOOL STORAGE



DX6™ CROSSOVER™ 6" VISE



- 6" vise, full 9" opening
- AngLock® design- spherical segment creates all-directional alignment and reduces jaw lift
- Narrower body style allows for more vises on the machine
- Recessed pocket for easier lifting
- Thru-body chip evacuation
- Pull-type design reduces stress on vise body
- Same bed height as D688
- 4 bolt stationary design fastens from the top
- Bearing pack is larger, stronger and more durable than bearing in D688



THE NEW INDUSTRY STANDARD!
FULL 9" OPENING!

DX6 Vise
6" Jaw Width
Part # KURT-DX6
\$569.00

PinLock MOUNTING SYSTEMS

PLEASE CALL FOR MORE INFORMATION!

FEATURES:

- Extraction assist for side load conditions
- Pins provide stronger holding forces
- Compatible with existing systems
- Material: Shank/Bushing, high strength alloy steel
- Finish: Black Oxide
- Heat Treat: Shanks, RC 46-50
- Bushings, RC 46-50
- Liners, RC 46-50
- Operating Temperature Range: -49° to 400°F



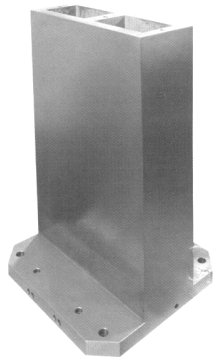
Designed To Reduce Time Spent Accurately Positioning And Clamping Fixture Plates And Sub Plates!
Interchangeable With Competitive Ball Locking Systems!



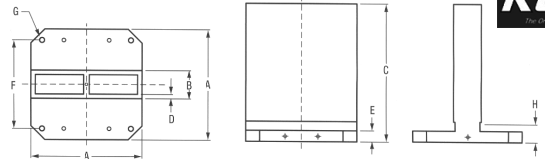
Call Us Or Visit Our Website For Our Complete Selection!

TOMBSTONES/WORKHOLDING SYSTEMS

TOMBSTONES-CAST IRON



The KURT 2 face ToolBox is ideal for mounting vises. Sub-plates (also available) may be bolted and dowelled on either side for quick, easy set-up. All vises or collet chucks may be mounted directly on ToolBox faces. Made of Class-35 cast iron.

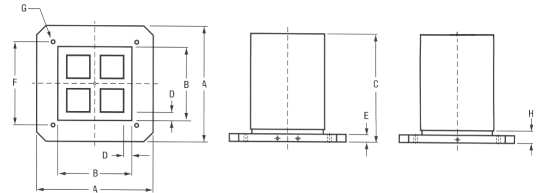


2 Face ToolBox™

A	B	C	D	E	F	G	H	Wght lbs	Part Number	Price
400mm X 400mm	6	26	1.50	1.50	320mm	5/8" or M16	2.25	516	KURT-TB2C40616	\$2,571.00
500mm X 500mm	8	34	1.50	1.75	400mm	5/8" or M16	2.50	908	KURT-TB2C50820	\$3,038.00



The KURT 4 face ToolBox is ideal for mounting vises of any size. Made of Class-35 cast iron.



4 Face ToolBox™

A	B	C	D	E	F	G	H	Wght lbs	Part Number	Price
400mm X 400mm	6	26	1.50	1.50	320mm	5/8" or M16	2.25	282	KURT-TB4C40606	\$1,945.00
400mm X 400mm	8	26	1.50	1.50	320mm	5/8" or M16	2.25	359	KURT-TB4C40808	\$1,876.00
400mm X 400mm	10	26	1.50	1.50	320mm	5/8" or M16	2.25	436	KURT-TB4C41010	\$2,335.00
500mm X 500mm	8	34	1.50	1.75	400mm	5/8" or M16	2.50	522	KURT-TB4C50808	\$2,714.00
500mm X 500mm	10	34	1.50	1.75	400mm	5/8" or M16	2.50	626	KURT-TB4C51010	\$2,850.00
500mm X 500mm	12	34	1.50	1.75	400mm	5/8" or M16	2.50	734	KURT-TB4C51212	\$3,275.00
500mm X 500mm	14	34	1.50	1.75	400mm	5/8" or M16	2.50	970	KURT-TB4C51414	\$3,697.00

SUB-PLATES ALSO AVAILABLE! PLEASE CALL FOR MORE INFORMATION!

RELOCK® DOUBLE STATION VISE

- Body manufactured from 80,000 PSI ductile cast iron
- Ways are flame hardened to 40 R/C maximum
- Includes handle and tool kit (pry wrench and hex wrenches)
- Package includes Double Station Vise and a 3-piece Machinable Soft Jaw Set

Machinable Replacement Jaws Also Available!



Full Line Available!
Please call for more information.



Vise Size	Vise With Soft Jaws			Vise With Hard Jaws		
	Package Contents	Part Number	Pkg Price	Package Contents	Part Number	Pkg Price
4"	1-RWS4002 1-SSJ4000	TECO-RWS4002SJ	\$1,250.00	1-RWS4002 1-SCJ4000 1-SHJ4035	TECO-RWS4002HJ	\$1,498.00
6"	1-RWS6002 1-SSJ6000	TECO-RWS6002SJ	\$1,598.00	1-RWS6002 1-SCJ6000 1-SHJ6035	TECO-RWS6002HJ	\$1,904.00
8"	1-RWS8002 1-SSJ8000	TECO-RWS8002SJ	\$4,253.00	1-RWS8002 1-SCJ8000 1-SHJ8035	TECO-RWS8002HJ	\$4,931.00

RELOCK® EIGHT STATION VISE

FEATURES:

- Body manufactured from 80,000 PSI ductile cast iron.
- Ways are flame hardened to 40 R/C maximum.
- Baseplates are designed to adapt to many machine table sizes.
- Vise columns can be located on a pallet using edge locating with shims or spacers (not included).
- Includes handle and tool kit (pry wrench & hex wrenches)
- **Soft Jaw Package** includes Eight-Station Vise and 4 - 3 piece Machinable Soft Jaw Sets.
- **Hard Jaw Package** includes Eight-Station Vise, 8 Carrier Jaws and 4 - 3 piece Standard Hard Jaw Sets.



Additional Configurations Available! Please Call For More Information!

Full Line Available!
Please call for more information.

Vise Size	Vise With Soft Jaws		Vise With Hard Jaws	
	Part Number	Pkg Price	Part Number	Pkg Price
4"	TECO-RWS4008SJ	\$5,439.00	TECO-RWS4008HJ	\$6,427.00
6"	TECO-RWS6008SJ	\$7,455.00	TECO-RWS6008HJ	\$8,681.00
8"	TECO-RWS8008SJ	\$18,469.00	TECO-RWS8008HJ	\$21,598.00

Call Us Today For All Of Your Machine Tool Needs!