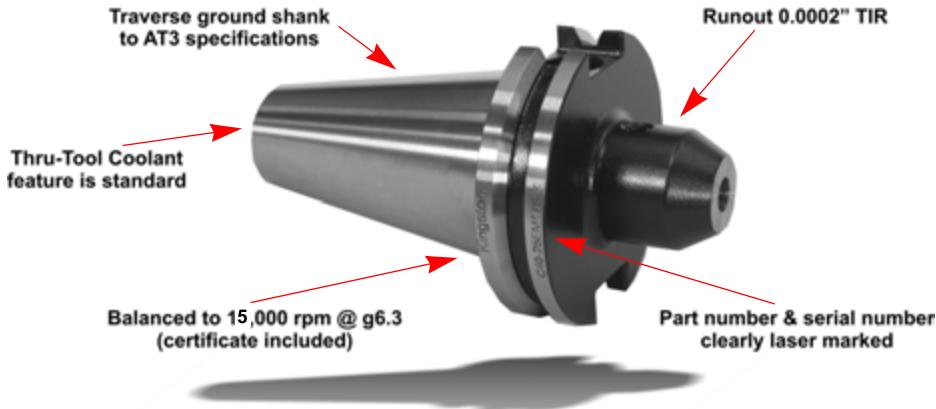


BALANCED TOOLHOLDERS



- **KINGSTON: BALANCED to 15,000 RPM @ g6.3**
- **SPIN TRU: BALANCED to 20,000 RPM @ g2.5**
- Manufactured to ISO9002 quality control standards
- Certification included with each holder
- Crafted from SAE 8620 alloy steel
- AT3 Class Accuracy
- Balanced holders result in less vibration, chatter and extended tool life.
- **100% Satisfaction Guaranteed!**



Why Buy A Balanced Toolholder?

Toolholders make the all-important connection between the cutting tool and the spindle. With the hard-earned money you invest in cutting tools, it only makes sense to do everything possible to increase tool life. One of the best, and easiest, ways to do this is to use balanced toolholders.

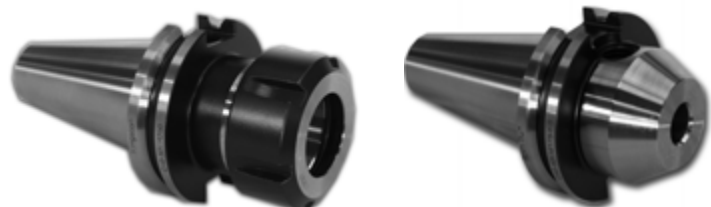
Toolholders can greatly influence the difference in tool life.

The use of a balanced toolholder can result in increased accuracy and repeatability due to less vibration and chatter. They can help to improve spindle bearing life and improve surface finish. They can save you time by allowing for faster speed and feed rates. All of these benefits mean that you save time and money.

Why Are They Balanced To g2.5 or g6.3?

Quite simply, this means that the tool holder balance is consistent with the spindle as recommended by International Standards Organization (ISO) standards. Balancing to the spindle is the best of class balanced tool holder. Both Kingston (balanced to 15,000 RPM) and Spin Tru (balanced to 20,000 RPM) Toolholders are International Quality AT3 Class balanced V-flange toolholders manufactured to the highest degree of technical excellence.

- Endmill Holders
- ER, TG & DA Collet Chucks
- Jacobs/Morse Taper Holders
- CAT & BT Tapers



LATHЕ CHUCKS
LIVE CENTERS

VISE JAWS
VISE ACCESSORIES

STRAIGHT SHANK
COLLET HOLDERS

TAP HOLDERS
DRILL CHUCKS

CARBIDE INSERTS
THREADING/GROOVING

CUTTING TOOLS
MACHINERY

PRECISION TOOLS
DEBURRING

COOLANT/FLUIDS
TOOL STORAGE